
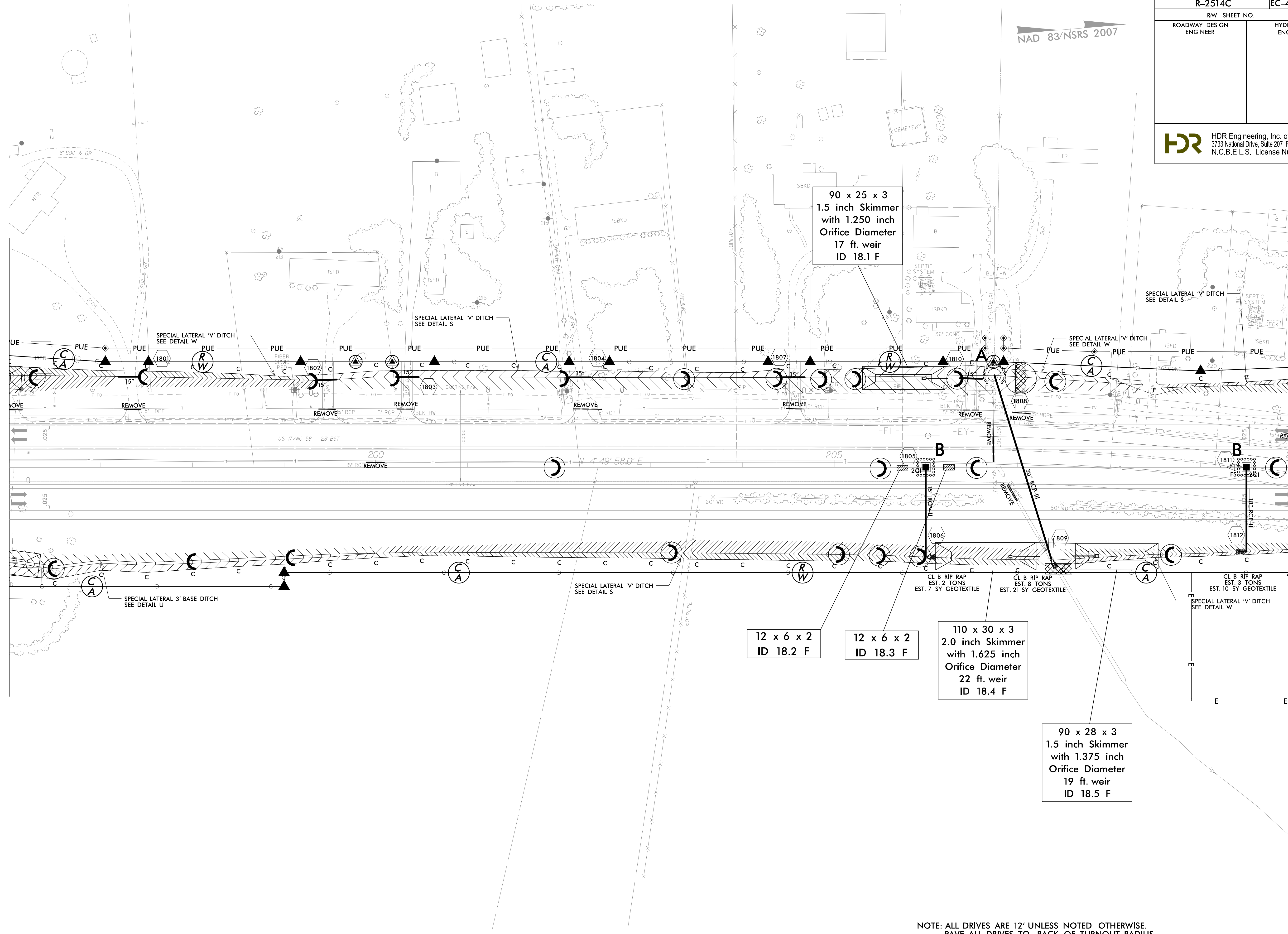


PROJECT REFERENCE NO.	SHEET NO.
R-2514C	EC-43/CONST.18
RW SHEET NO.	
ROADWAY DESIGN ENGINEER	HYDRAULICS ENGINEER
 HDR Engineering, Inc. of the Carolinas 3733 National Drive, Suite 207 Raleigh, N.C. 27612 N.C.B.E.L.S. License Number: F-0116	

NAD 83/NSRS 2007

MATCHLINE -L- STA. 196 + 00.00 SEE SHEET 17

MATCHLINE -L- STA. 210 + 00.00 SEE SHEET 19



90 x 25 x 3
1.5 inch Skimmer
with 1.250 inch
Orifice Diameter
17 ft. weir
ID 18.1 F

12 x 6 x 2
ID 18.2 F

12 x 6 x 2
ID 18.3 F

110 x 30 x 3
2.0 inch Skimmer
with 1.625 inch
Orifice Diameter
22 ft. weir
ID 18.4 F

90 x 28 x 3
1.5 inch Skimmer
with 1.375 inch
Orifice Diameter
19 ft. weir
ID 18.5 F

REVISIONS
R/W REVISION 7-28-14 (DMG) - ADDED A SECOND CLAIM OF PUE ON PARCEL 122Z (GEORGE W. GRIGGS, ET AL).

2/2/2015
10:24:07 AM
4C_Hyd_EC_FINAL_PSH.dgn

NOTE: ALL DRIVES ARE 12' UNLESS NOTED OTHERWISE.
PAVE ALL DRIVES TO BACK OF TURNOUT RADIUS.
SEE SHEET 2-D FOR DRIVEWAY PROFILE DETAILS.

SEE SHEET 36 FOR -L- PROFILE