


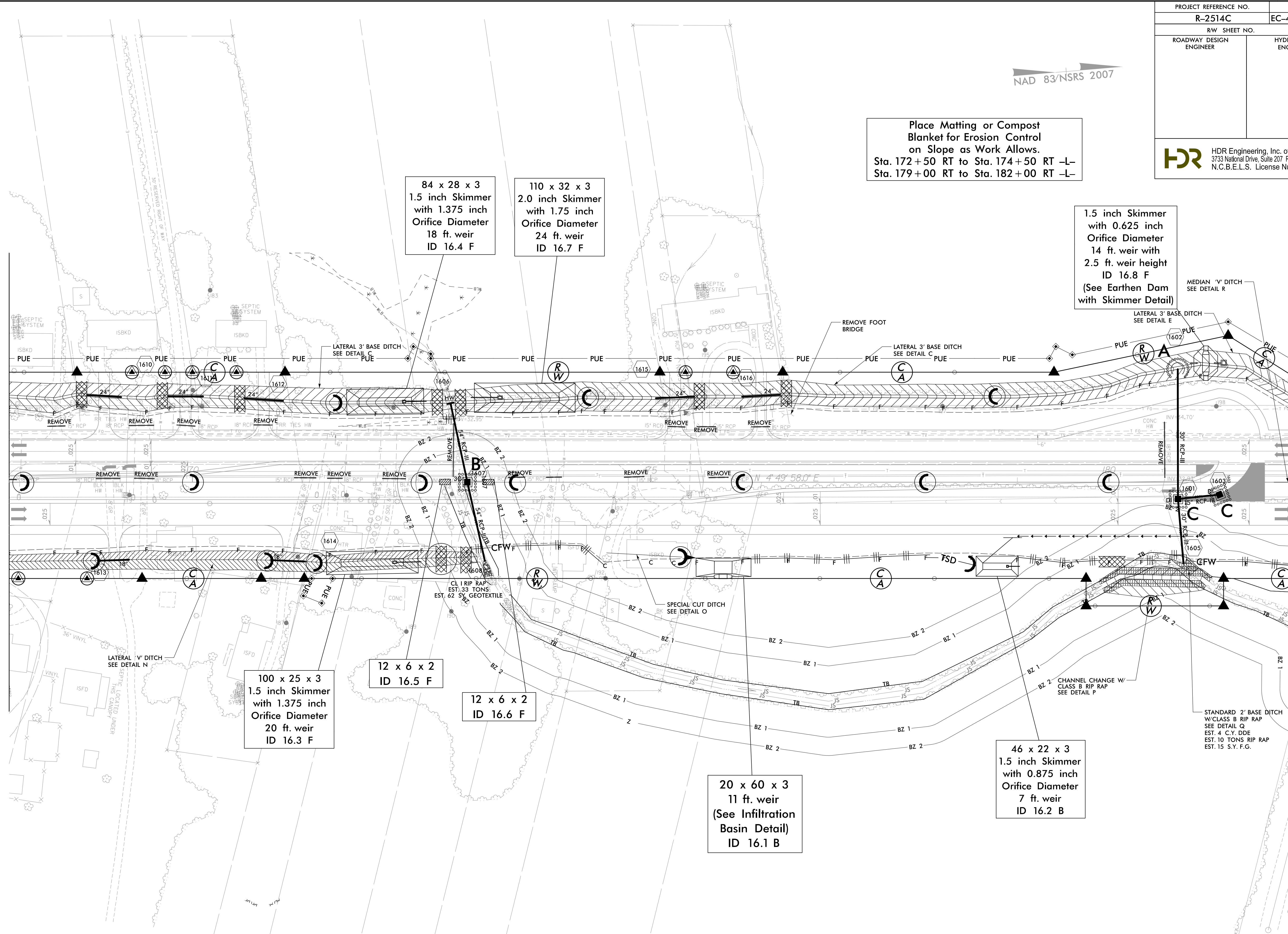
PROJECT REFERENCE NO.	SHEET NO.
R-2514C	EC-4/CONST.16
RW SHEET NO.	
ROADWAY DESIGN ENGINEER	HYDRAULICS ENGINEER
 HDR Engineering, Inc. of the Carolinas 3733 National Drive, Suite 207 Raleigh, N.C. 27612 N.C.B.E.L.S. License Number: F-0116	

NAD 83/NSRS 2007

Place Matting or Compost Blanket for Erosion Control on Slope as Work Allows.
 Sta. 172+50 RT to Sta. 174+50 RT -L-
 Sta. 179+00 RT to Sta. 182+00 RT -L-

MATCHLINE -L- STA. 168 + 00.00 SEE SHEET 15

MATCHLINE -L- STA. 182 + 00.00 SEE SHEET 17



REVISIONS
 R/W REVISION 7-28-14 (DMG) - ADDED A SECOND CLAIM OF PUE ON PARCEL 98Z (JAMES HENRY BRYANT).

2/2/2015
 10:24:43 AM
 10:24:43 AM
 4C_Hyd_EC_FINAL_PSH.dgn

NOTE: ALL DRIVES ARE 12' UNLESS NOTED OTHERWISE.
 PAVE ALL DRIVES TO BACK OF TURNOUT RADIUS.
 SEE SHEET 2-D FOR DRIVEWAY PROFILE DETAILS.

SEE SHEET 35 FOR -L- PROFILE