


PROJECT REFERENCE NO.	SHEET NO.
R-2514C	EC-40/CONST.15
RW SHEET NO.	
ROADWAY DESIGN ENGINEER	HYDRAULICS ENGINEER
 HDR Engineering, Inc. of the Carolinas 3733 National Drive, Suite 207 Raleigh, N.C. 27612 N.C.B.E.L.S. License Number: F-0116	

NAD 83/NSRS 2007

MATCHLINE -L- STA. 154 + 00.00 SEE SHEET 14

MATCHLINE -L- STA. 168 + 00.00 SEE SHEET 16

Place Matting or Compost Blanket for Erosion Control on Slope as Work Allows.
Sta. 159 + 00 RT to Sta. 164 + 50 RT -L-

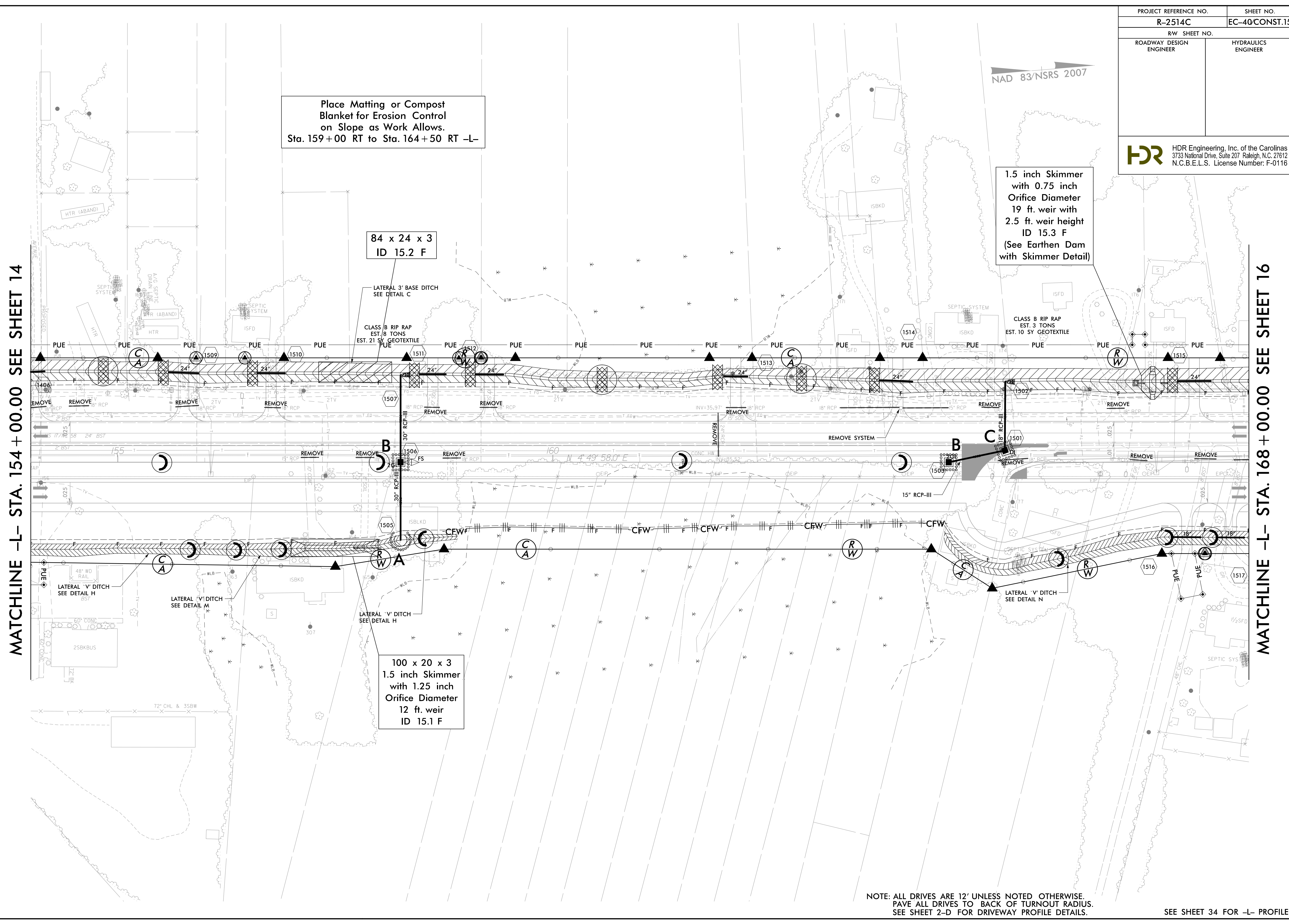
1.5 inch Skimmer with 0.75 inch Orifice Diameter
19 ft. weir with 2.5 ft. weir height
ID 15.3 F
(See Earthen Dam with Skimmer Detail)

84 x 24 x 3
ID 15.2 F

100 x 20 x 3
1.5 inch Skimmer with 1.25 inch Orifice Diameter
12 ft. weir
ID 15.1 F

REVISIONS
 R/W REVISION 6-25-14 (DMG) - REVISED THE PUE ON PARCEL 86 (VAN S. SMITH). ADDED PUE ON PARCEL 58 (BLUE ROCK STRUCTURES, INC.) AND PARCEL 88 (LOUISE MURRELL FOYE, ET AL C/O ROBERT HORRY). ADDED A NEW CLAIM OF PUE ON PARCEL 90A (LEVY MOORE, ET UX).
 8/17/99

2/2/2015
 10:24:13 AM
 R-2514C-Hyd-EC-FINAL_PSH.dgn



NOTE: ALL DRIVES ARE 12' UNLESS NOTED OTHERWISE.
PAVE ALL DRIVES TO BACK OF TURNOUT RADIUS.
SEE SHEET 2-D FOR DRIVEWAY PROFILE DETAILS.

SEE SHEET 34 FOR -L- PROFILE