


PROJECT REFERENCE NO.		SHEET NO.	
R-2514C		EC-32/CONST.7	
RW SHEET NO.			
ROADWAY DESIGN ENGINEER		HYDRAULICS ENGINEER	
 HDR Engineering, Inc. of the Carolinas 3733 National Drive, Suite 207 Raleigh, N.C. 27612 N.C.B.E.L.S. License Number: F-0116			

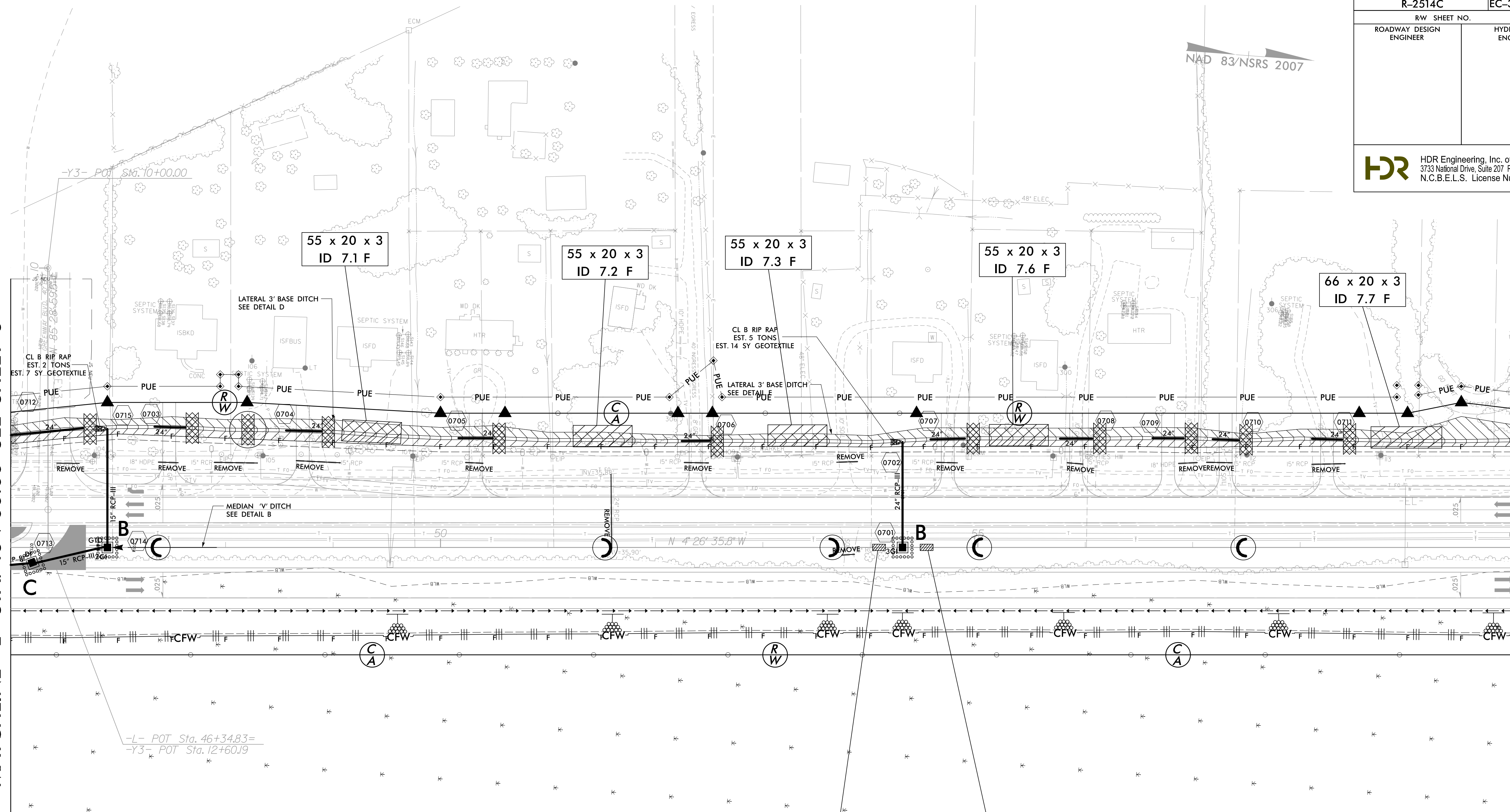
NAD 83/NSRS 2007

REVISIONS
 R/W REVISION 7-28-14 (DWG) - REVISED THE PROPERTY OWNER NAME OF PARCEL 21(DORIS L HILL) TO PARCEL 21A (BRADLEY HILL). ADDED A SECOND CLAIM OF PUE ON PARCEL 21A (BRADLEY HILL), PARCEL 21Z (DORIS L. HILL), AND PARCEL 2BZ (RAYMOND C. BARKS, JR., ET UX).
 R/W REVISION 9-25-14 (DWG) - REVISED THE PUE ON PARCEL 21(DORIS L. HILL). ELIMINATED THE SECOND CLAIMS (21Z AND 21AZ) FROM PARCEL 21(DORIS L. HILL) AND PARCEL 21A (BRADLEY HILL).

8/17/99

MATCHLINE -L- STA. 46 + 00.00 SEE SHEET 6

MATCHLINE -L- STA. 60 + 00.00 SEE SHEET 8



Place Matting or Compost Blanket for Erosion Control on Slope as Work Allows. Sta. 46+00 RT to Sta. 60+00 RT -L-

12 x 6 x 2 ID 7.4 F

12 x 6 x 2 ID 7.5 F

NOTE: ALL DRIVES ARE 12' UNLESS NOTED OTHERWISE. PAVE ALL DRIVES TO BACK OF TURNOUT RADIUS. SEE SHEET 2-D FOR DRIVEWAY PROFILE DETAILS. SEE SHEET 30 FOR -L- PROFILE

2/2/2015 10:24:08 AM
 I:\2014\4C_Hyd_EC_FINAL_PSH.dgn