


PROJECT REFERENCE NO.	SHEET NO.
R-2514C	EC-30/CONST.5
RW SHEET NO.	
ROADWAY DESIGN ENGINEER	HYDRAULICS ENGINEER
 HDR Engineering, Inc. of the Carolinas 3733 National Drive, Suite 207 Raleigh, N.C. 27612 N.C.B.E.L.S. License Number: F-0116	

NAD 83/NSRS 2007

MATCHLINE -L- STA. 19 + 00.00 SEE SHEET 4

MATCHLINE -L- STA. 32 + 00.00 SEE SHEET 6

Place Matting or Compost Blanket for Erosion Control on Slope as Work Allows.
 Sta. 19+00 LT to Sta. 22+00 LT -L-
 Sta. 24+00 LT to Sta. 25+00 LT -L-
 Sta. 21+00 RT to Sta. 32+00 RT -L-

1.5 inch Skimmer with 0.875 inch Orifice Diameter
 20 ft. weir with 2.5 ft. weir height
 ID 5.1 F
 (See Earthen Dam with Skimmer Detail)

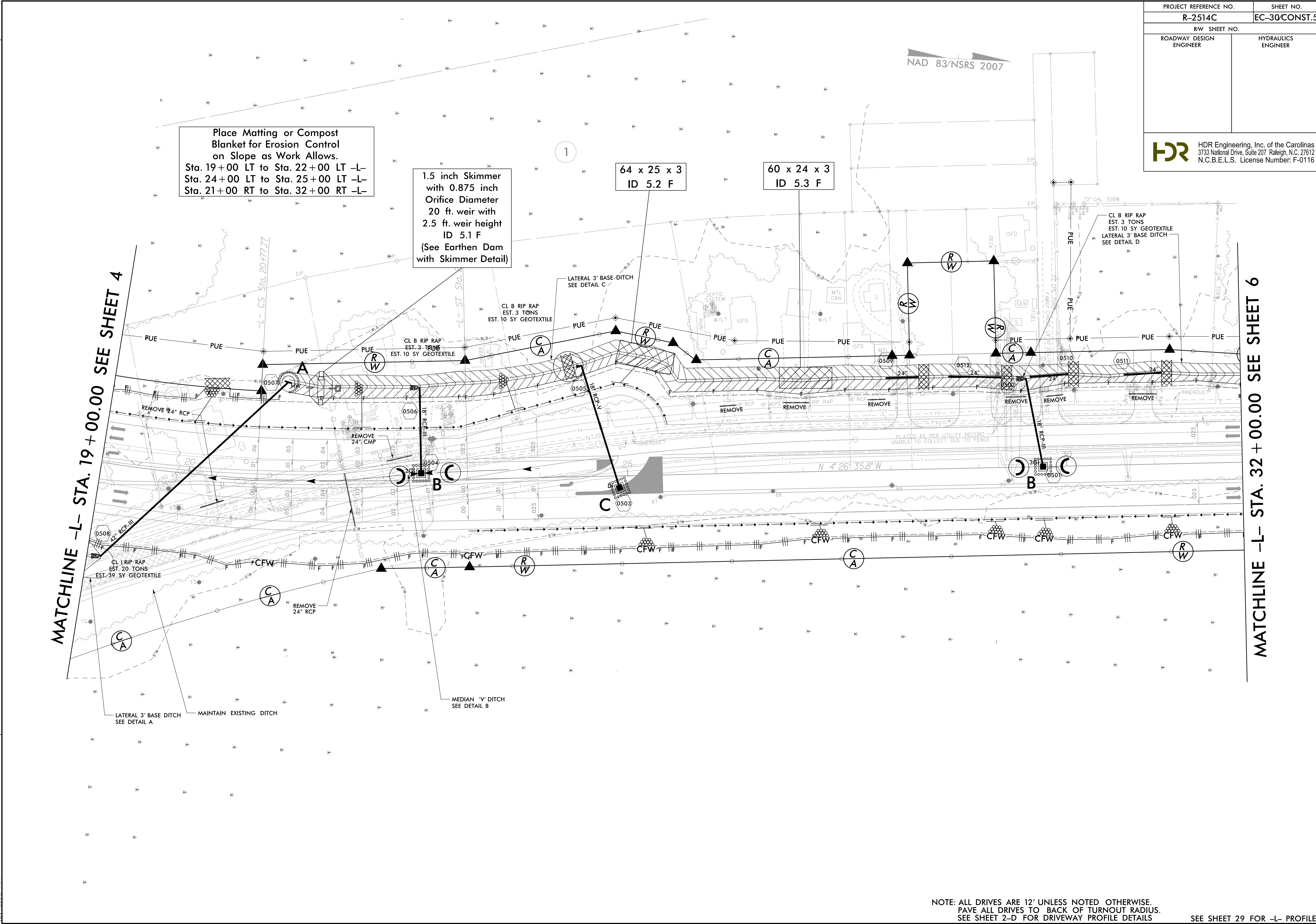
64 x 25 x 3
 ID 5.2 F

60 x 24 x 3
 ID 5.3 F

8/17/99

REVISIONS
 R/W REVISION 7-28-14 (DWG) - ADDED A SECOND CLAIM OF PUE ON PARCEL 14Z (ALPHONSO HILL).

2/2/2015
 10:46:55 AM
 I:\2514C_Hyd_EC_FINAL_PSH.dgn



NOTE: ALL DRIVES ARE 12' UNLESS NOTED OTHERWISE.
 PAVE ALL DRIVES TO BACK OF TURNOUT RADIUS.
 SEE SHEET 2-D FOR DRIVEWAY PROFILE DETAILS

SEE SHEET 29 FOR -L- PROFILE