

|                         |                     |
|-------------------------|---------------------|
| PROJECT REFERENCE NO.   | SHEET NO.           |
| R-2514C                 | EC-28B/CONST.26B    |
| RW SHEET NO.            |                     |
| ROADWAY DESIGN ENGINEER | HYDRAULICS ENGINEER |

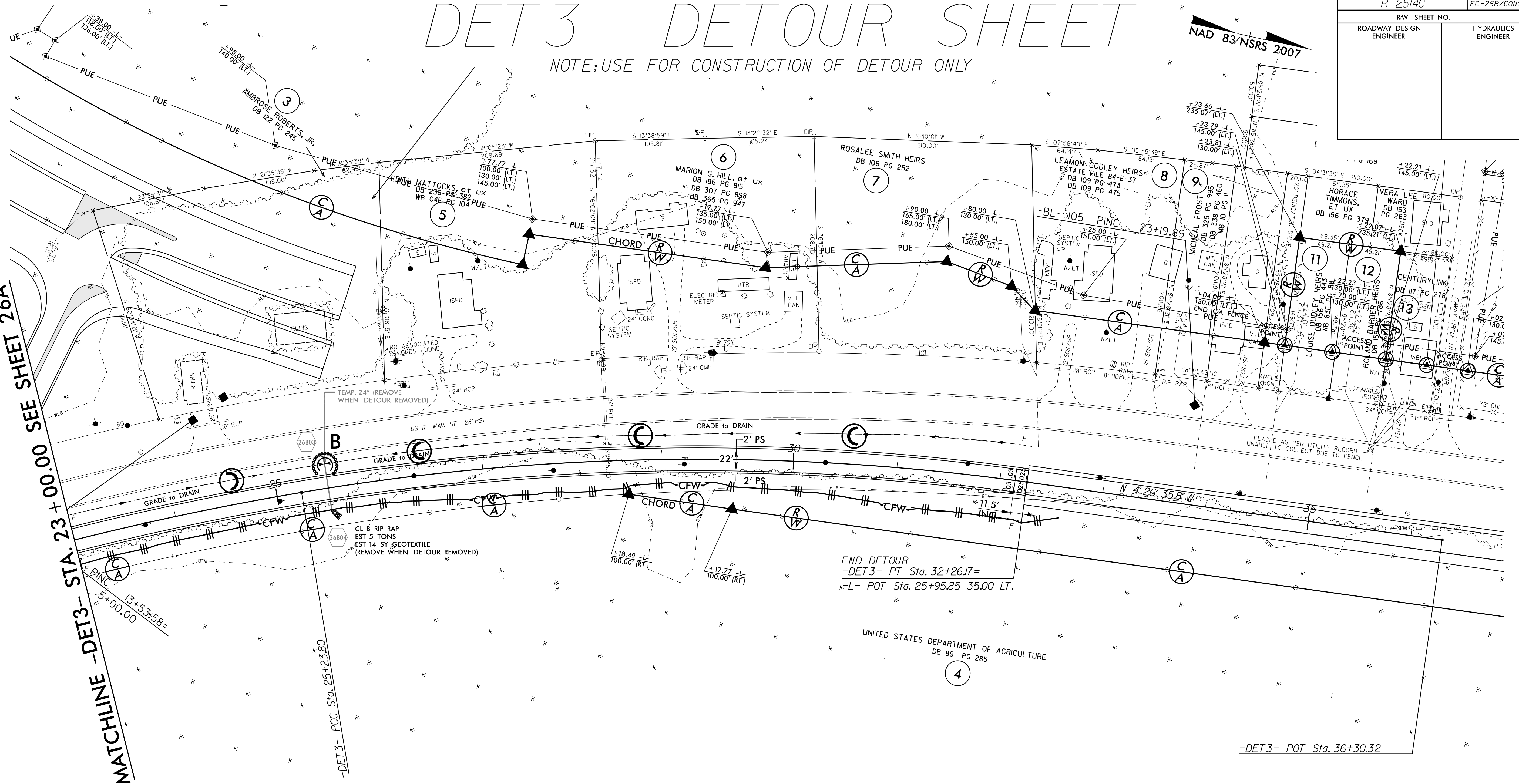
# -DET3- DETOUR SHEET

NOTE: USE FOR CONSTRUCTION OF DETOUR ONLY

NAD 83/NSRS 2007

8/17/99  
I:\0-FEB-2015\1518\0-Design\2514C\Final Plan\Design\Added detour after turn in 2-9-2015\R2514C-EC.psh.26B.dgn  
C:\Users\jgier\Documents\2514C\2514C.dwg  
A:\PENNY\2514C

MATCHLINE -DET3- STA. 23+00.00 SEE SHEET 26A



END DETOUR  
-DET3- PT Sta. 32+26.17=  
L- POT Sta. 25+95.85 35.00 LT.

UNITED STATES DEPARTMENT OF AGRICULTURE  
DB 89 PG 285

| -DET3-                            |                                    |
|-----------------------------------|------------------------------------|
| PI Sta 23+24.44                   | PI Sta 28+77.74                    |
| $\Delta = 8^{\circ}06'00.8" (RT)$ | $\Delta = 17^{\circ}29'49.2" (RT)$ |
| $D = 2^{\circ}01'41.4"$           | $D = 2^{\circ}29'28.0"$            |
| $L = 399.39'$                     | $L = 702.37'$                      |
| $T = 200.03'$                     | $T = 353.94'$                      |
| $R = 2,825.00'$                   | $R = 2,300.00'$                    |
| $DS = 45 \text{ mph}$             | $DS = 45 \text{ mph}$              |
| $e = .03$                         | $e = .03$                          |
| $RO = 69'$                        | $RO = 69'$                         |

-DET3- POT Sta. 36+30.32

SEE SHEET 44 FOR -DET3- PROFILE