


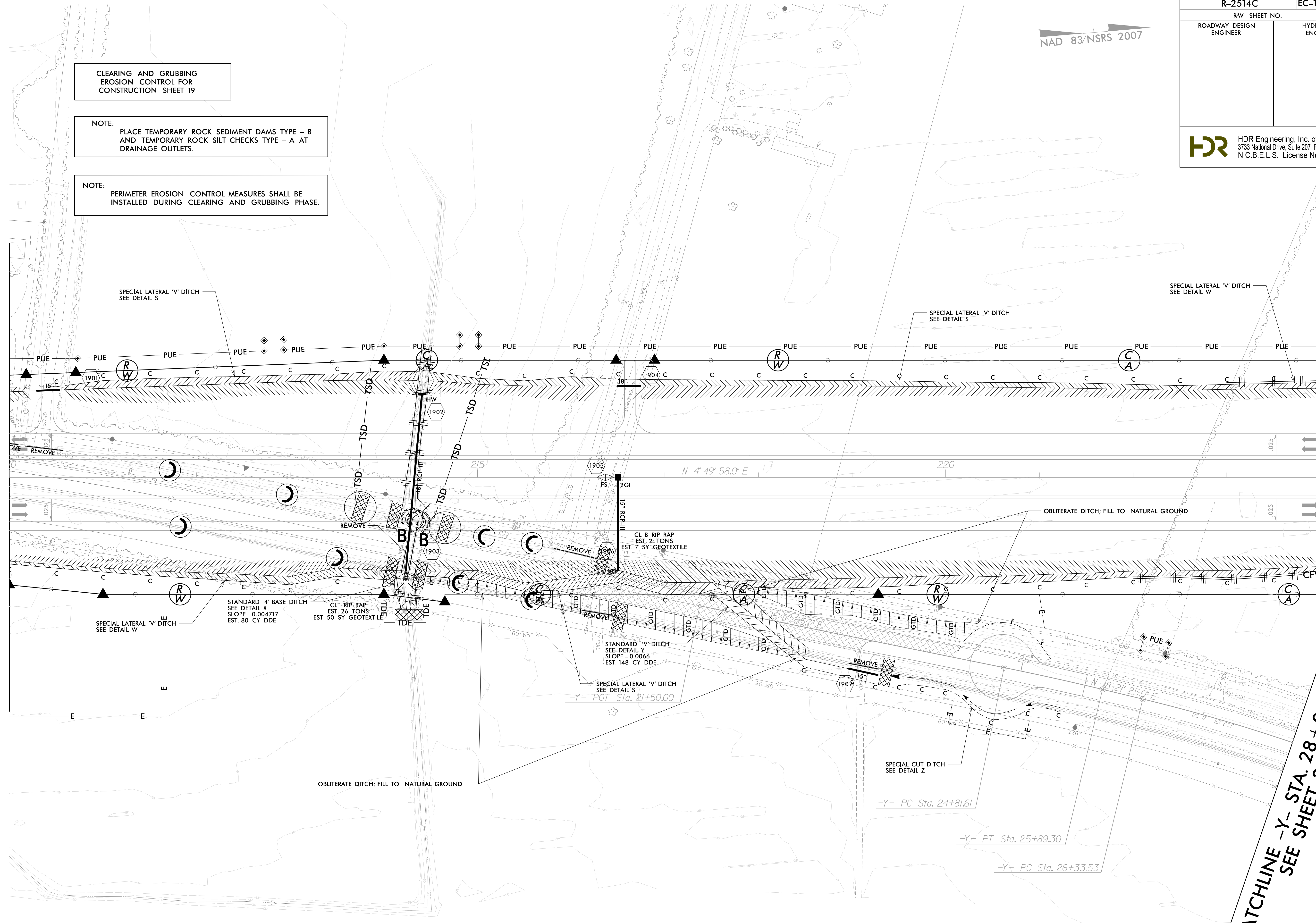
PROJECT REFERENCE NO.	SHEET NO.
R-2514C	EC-19/CONST.19
R/W SHEET NO.	
ROADWAY DESIGN ENGINEER	HYDRAULICS ENGINEER
 HDR Engineering, Inc. of the Carolinas 3733 National Drive, Suite 207 Raleigh, N.C. 27612 N.C.B.E.L.S. License Number: F-0116	

NAD 83/NSRS 2007

MATCHLINE -L- STA. 210 + 00.00 SEE SHEET 18

MATCHLINE -L- STA. 224 + 00.00 SEE SHEET 20

MATCHLINE -Y- STA. 28 + 00.00 SEE SHEET 20



CLEARING AND GRUBBING  
EROSION CONTROL FOR  
CONSTRUCTION SHEET 19

NOTE:  
PLACE TEMPORARY ROCK SEDIMENT DAMS TYPE - B  
AND TEMPORARY ROCK SILT CHECKS TYPE - A AT  
DRAINAGE OUTLETS.

NOTE:  
PERIMETER EROSION CONTROL MEASURES SHALL BE  
INSTALLED DURING CLEARING AND GRUBBING PHASE.

REVISIONS  
 R/W REVISION 6-25-14 (DWG) - REVISED THE PUE ON PARCEL 125 (MELVIN L. AYCOCK, JR., ET. UX), PARCEL 126 (MEYER/HAUSER), AND PARCEL 129 (DELGEN L. MITCHELL, ET. UX)  
 AT -L- STA. 224+84.00 LT. ADDED ADDITIONAL PUE ON PARCEL 129 (DELGEN L. MITCHELL, ET. UX) AT -Y- STA. 26+33.00 LT. AND -L- STA. 225+21.00 RT.

2/2/2015  
 10:44:02 AM  
 4C\_Hyd\_EC.CG\_PSH.dgn

NOTE: ALL DRIVES ARE 12' UNLESS NOTED OTHERWISE.  
PAVE ALL DRIVES TO BACK OF TURNOUT RADIUS.  
SEE SHEET 2-D FOR DRIVEWAY PROFILE DETAILS.

SEE SHEET 36 FOR -L- PROFILE  
SEE SHEET 42 FOR -Y- PROFILE