


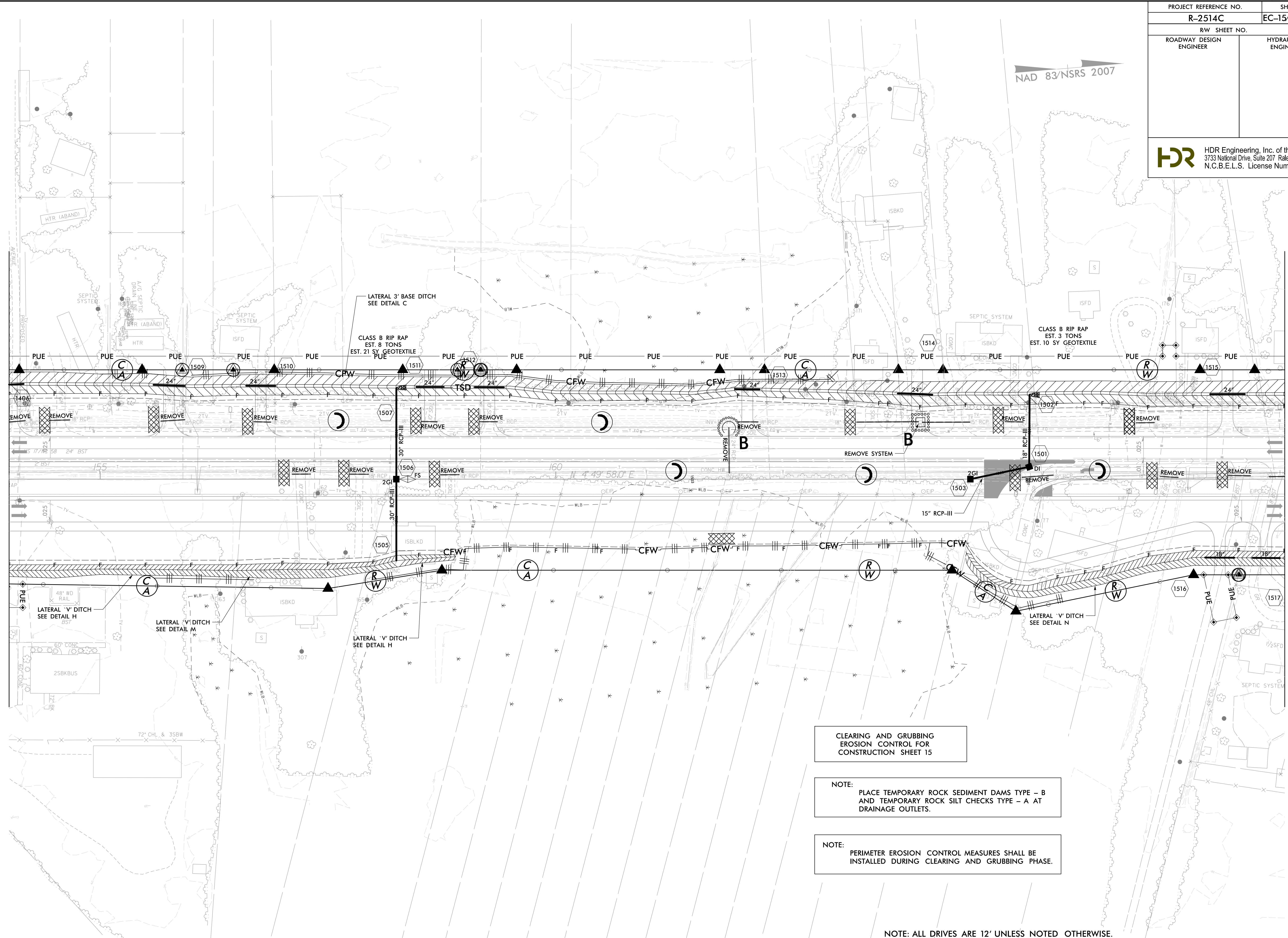
PROJECT REFERENCE NO.	SHEET NO.
R-2514C	EC-15CONSTR.15
RW SHEET NO.	
ROADWAY DESIGN ENGINEER	HYDRAULICS ENGINEER
 HDR Engineering, Inc. of the Carolinas 3733 National Drive, Suite 207 Raleigh, N.C. 27612 N.C.B.E.L.S. License Number: F-0116	

NAD 83/NSRS 2007

REVISIONS
 R/W REVISION 6-25-14 (DMG) - REVISED THE PUE ON PARCEL 86 (VAN S. SMITH). ADDED PUE ON PARCEL 58 (BLUE ROCK STRUCTURES, INC.) AND PARCEL 88 (LOUISE MURRELL FOYE, ET AL C/O ROBERT HORRY). ADDED A NEW CLAIM OF PUE ON PARCEL 90A (LEVY MOORE, ET UX).

2/2/2015
 10:43:34 AM
 10:43:34 AM
 2514C_Hyd_EC_CG_PSH.dgn

MATCHLINE -L- STA. 154 + 00.00 SEE SHEET 14



MATCHLINE -L- STA. 168 + 00.00 SEE SHEET 16

CLEARING AND GRUBBING
 EROSION CONTROL FOR
 CONSTRUCTION SHEET 15

NOTE:
 PLACE TEMPORARY ROCK SEDIMENT DAMS TYPE - B
 AND TEMPORARY ROCK SILT CHECKS TYPE - A AT
 DRAINAGE OUTLETS.

NOTE:
 PERIMETER EROSION CONTROL MEASURES SHALL BE
 INSTALLED DURING CLEARING AND GRUBBING PHASE.

NOTE: ALL DRIVES ARE 12' UNLESS NOTED OTHERWISE.
 PAVE ALL DRIVES TO BACK OF TURNOUT RADIUS.
 SEE SHEET 2-D FOR DRIVEWAY PROFILE DETAILS.

SEE SHEET 34 FOR -L- PROFILE