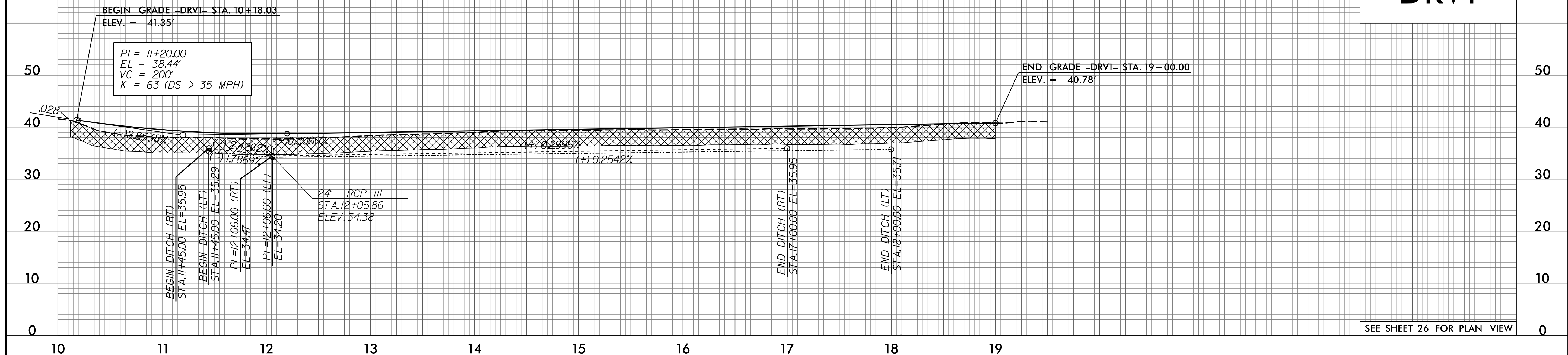


5/28/99

| PIPE HYDRAULIC DATA | | |
|-------------------------|--------|-----|
| Str. 2603 Sta. 12+05.86 | | |
| DRAINAGE AREA | = 13J | AC |
| DESIGN FREQUENCY | = 50 | YRS |
| DESIGN DISCHARGE | = 18.3 | CFS |
| DESIGN HW ELEVATION | = 37 | FT |
| 100 YEAR DISCHARGE | = 20.5 | CFS |
| 100 YEAR HW ELEVATION | = 37.2 | FT |
| OVERTOPPING FREQUENCY | = 500+ | YRS |
| OVERTOPPING DISCHARGE | = 25.9 | CFS |
| OVERTOPPING ELEVATION | = 38.3 | FT |

| | |
|--|---|
| PROJECT REFERENCE NO. R-2514C | SHEET NO. 43 |
| ROADWAY DESIGN ENGINEER DANIEL W. GARDNER, JR. SEAL 033871 3/27/2015 | HYDRAULICS ENGINEER BROOK E. ANDERSON SEAL 032581 3/27/2015 |

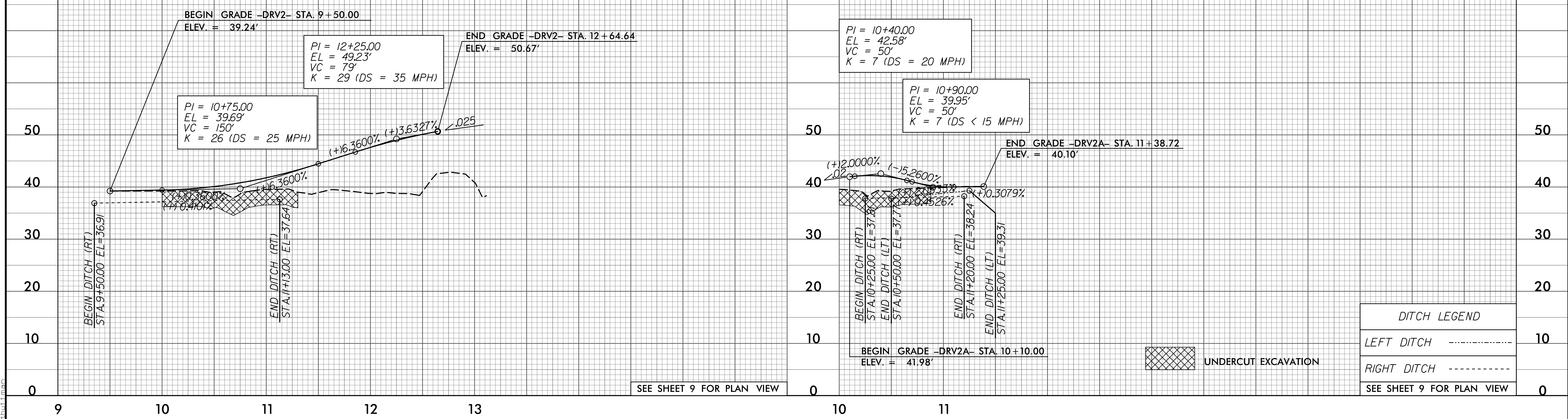
-DRV1-



SEE SHEET 26 FOR PLAN VIEW

-DRV2-

-DRV2A-



SEE SHEET 9 FOR PLAN VIEW

| DITCH LEGEND | |
|---------------------------|-------|
| LEFT DITCH | ----- |
| RIGHT DITCH | ----- |
| SEE SHEET 9 FOR PLAN VIEW | |

UNDERCUT EXCAVATION

F:\18\2015\01\Cadd\2514C\Roadway\Proj\R2514C_Rdy.plt.dgn