

5/28/99

**PIPE HYDRAULIC DATA**  
Str. 2803 Sta. 12+60

DRAINAGE AREA	= 27.6	AC
DESIGN FREQUENCY	= 50	YRS
DESIGN DISCHARGE	= 31	CFS
DESIGN HW ELEVATION	= 37.3	FT
100 YEAR DISCHARGE	= 35	CFS
100 YEAR HW ELEVATION	= 37.7	FT
OVERTOPPING FREQUENCY	= 100	YRS
OVERTOPPING DISCHARGE	= 35	CFS
OVERTOPPING ELEVATION	= 37.7	FT

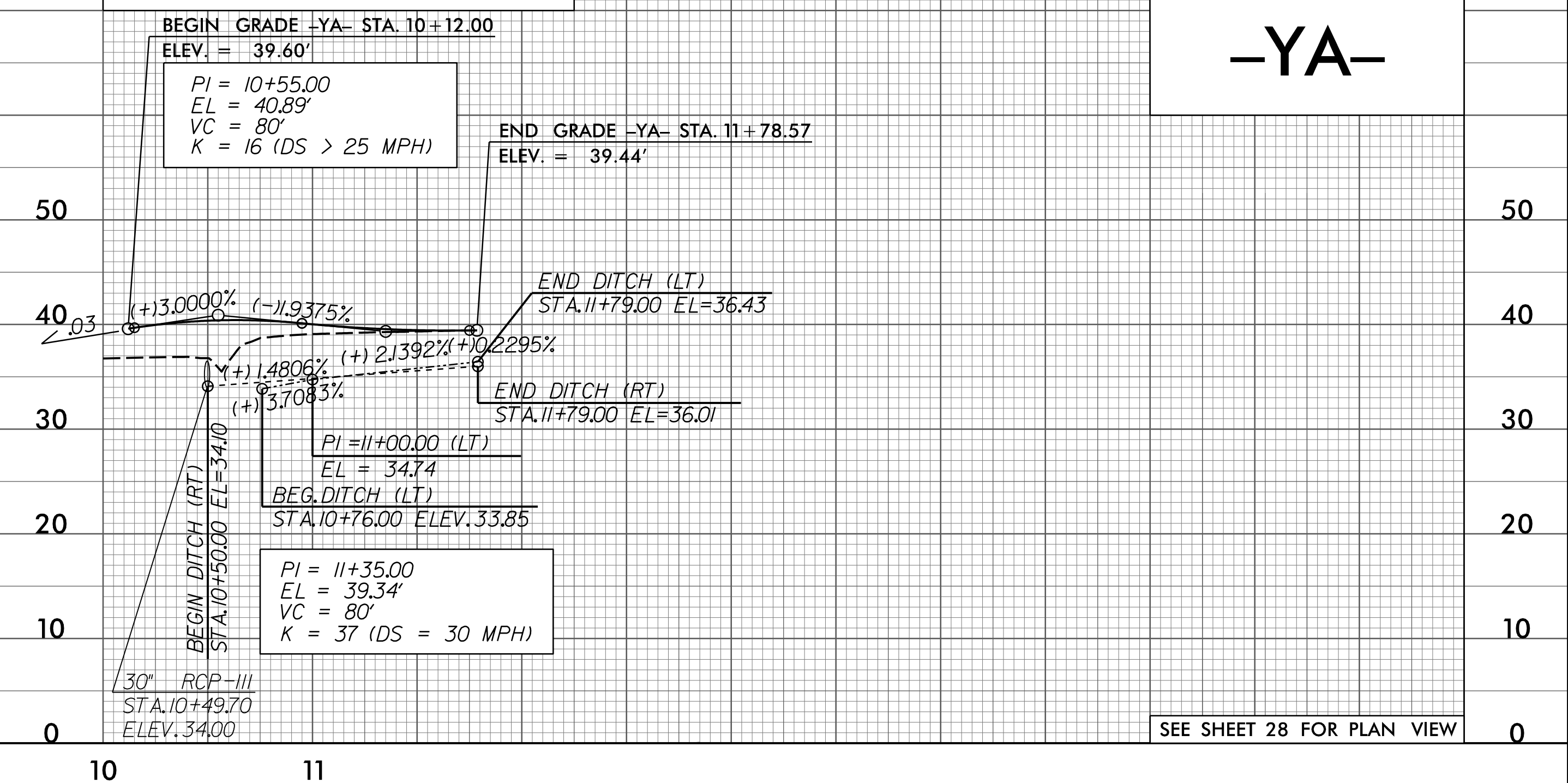
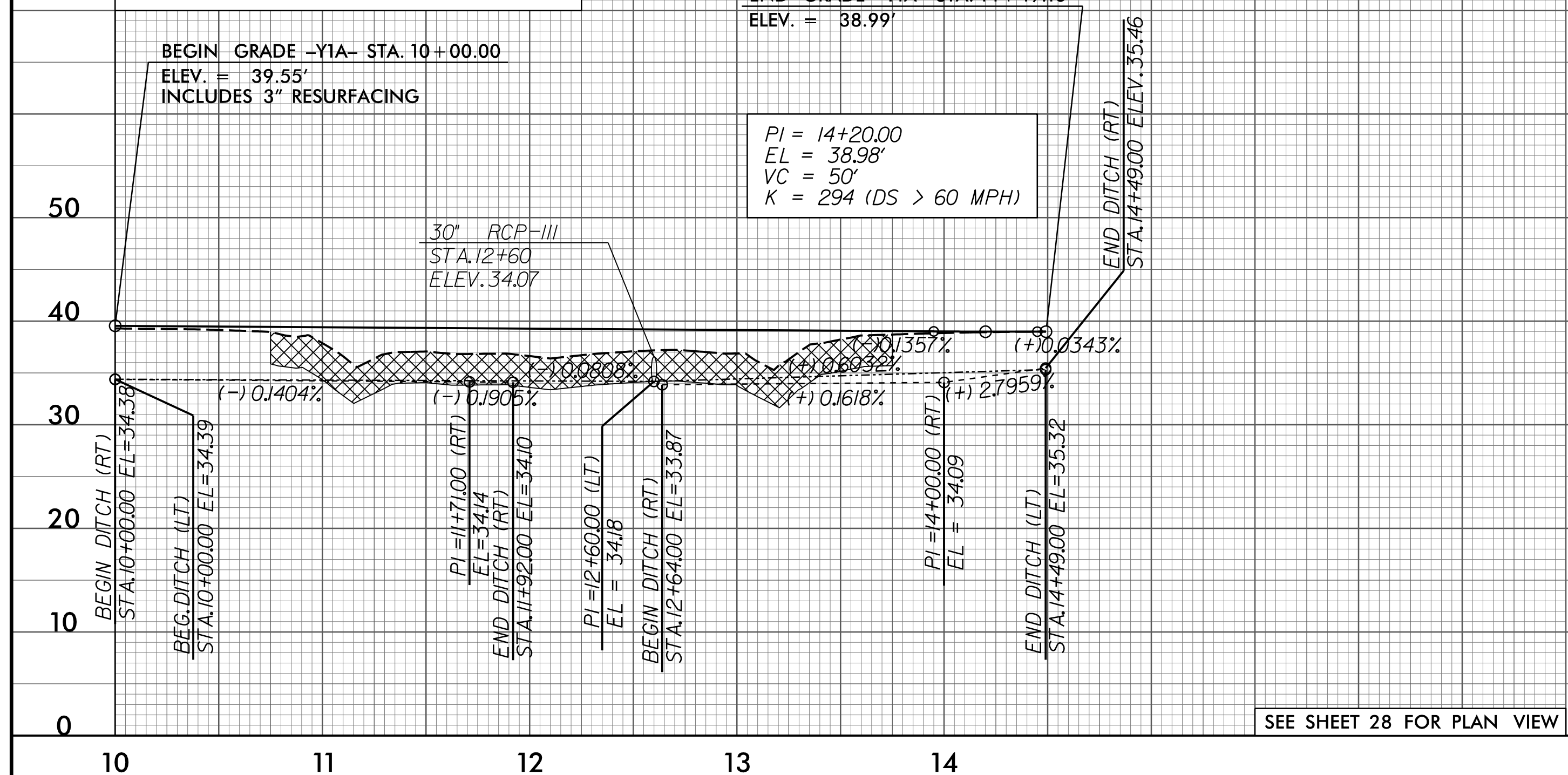
**-Y1A-**

**PIPE HYDRAULIC DATA**  
Str. 2801 Sta. 10+49.70

DRAINAGE AREA	= 20.4	AC
DESIGN FREQUENCY	= 50	YRS
DESIGN DISCHARGE	= 28	CFS
DESIGN HW ELEVATION	= 37	FT
100 YEAR DISCHARGE	= 31	CFS
100 YEAR HW ELEVATION	= 37.3	FT
OVERTOPPING FREQUENCY	= 500+	YRS
OVERTOPPING DISCHARGE	= 37	CFS
OVERTOPPING ELEVATION	= 38.9	FT

PROJECT REFERENCE NO. R-2514C	SHEET NO. 41
ROADWAY DESIGN ENGINEER DANIEL W. GARDNER, JR. SEAL 033871 3/27/2005	HYDRAULICS ENGINEER BROOK E. ANDERSON SEAL 032581 3/27/2005

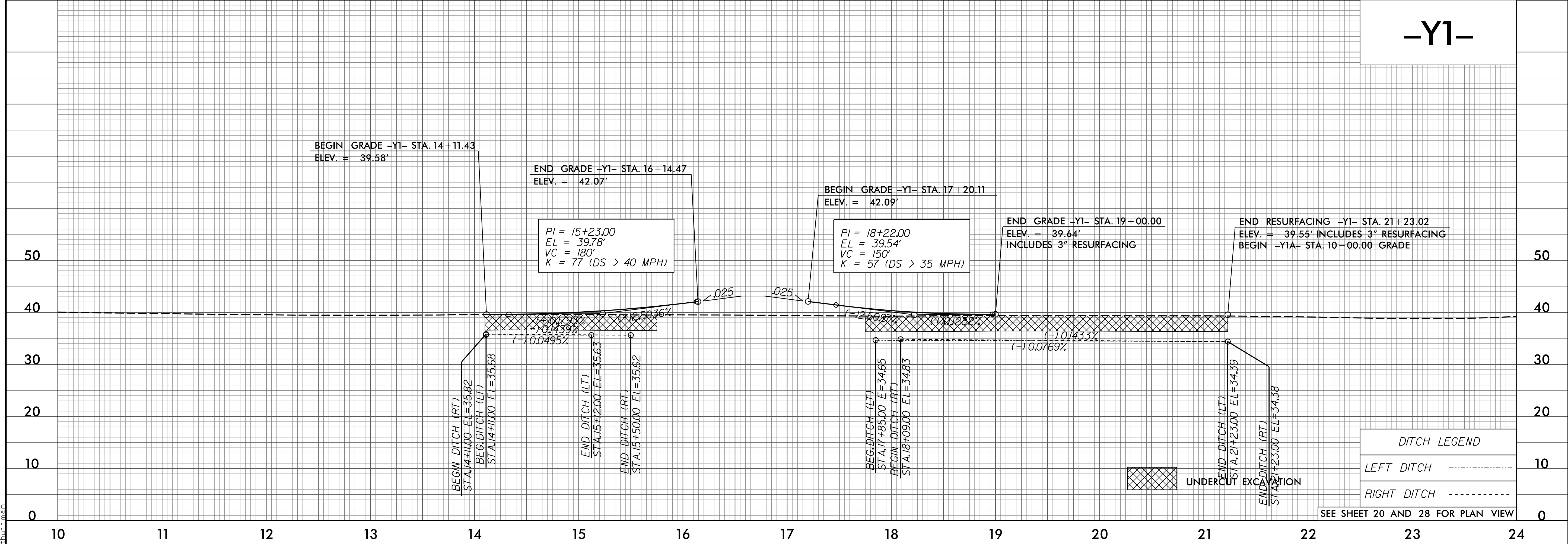
**-YA-**



SEE SHEET 28 FOR PLAN VIEW

SEE SHEET 28 FOR PLAN VIEW

**-Y1-**



**DITCH LEGEND**

LEFT DITCH	-----	10
RIGHT DITCH	-----	10

SEE SHEET 20 AND 28 FOR PLAN VIEW

P:\826205\01\Cadd\2514C\Roadway\Proj\R2514C\_Rdy.plt.dgn