

5/28/99

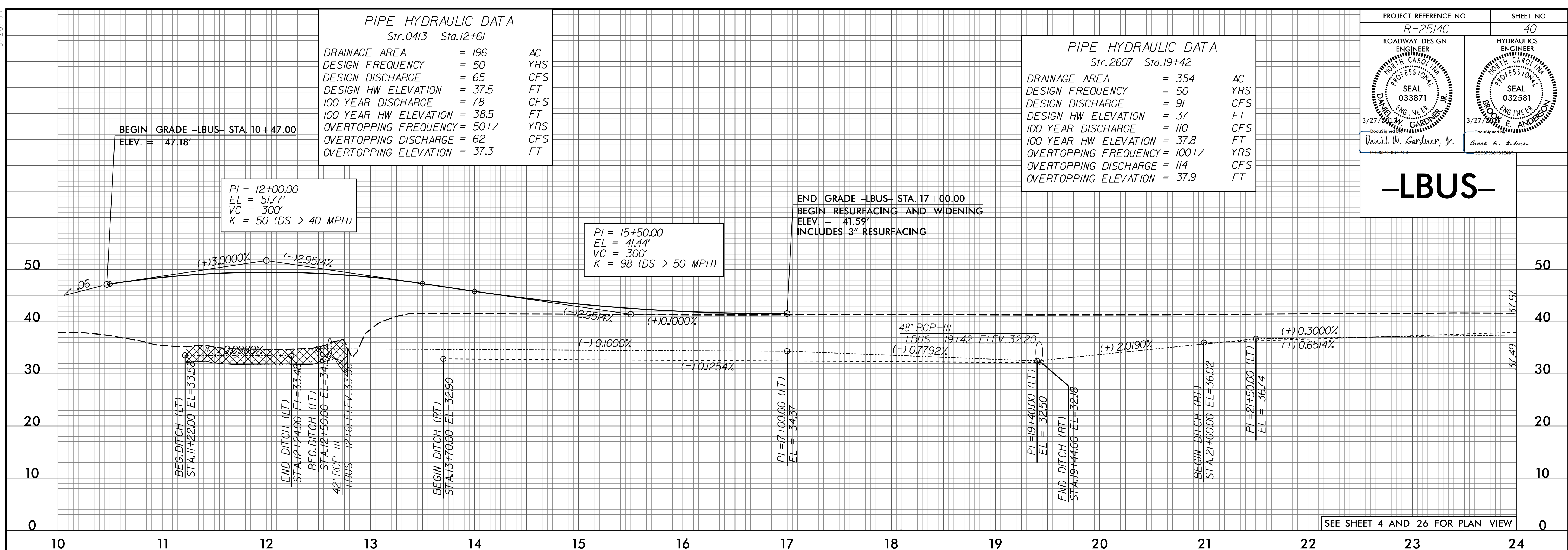
**PIPE HYDRAULIC DATA**  
Str.0413 Sta.12+61

DRAINAGE AREA	= 196	AC
DESIGN FREQUENCY	= 50	YRS
DESIGN DISCHARGE	= 65	CFS
DESIGN HW ELEVATION	= 37.5	FT
100 YEAR DISCHARGE	= 78	CFS
100 YEAR HW ELEVATION	= 38.5	FT
OVERTOPPING FREQUENCY	= 50+/-	YRS
OVERTOPPING DISCHARGE	= 62	CFS
OVERTOPPING ELEVATION	= 37.3	FT

**PIPE HYDRAULIC DATA**  
Str.2607 Sta.19+42

DRAINAGE AREA	= 354	AC
DESIGN FREQUENCY	= 50	YRS
DESIGN DISCHARGE	= 91	CFS
DESIGN HW ELEVATION	= 37	FT
100 YEAR DISCHARGE	= 110	CFS
100 YEAR HW ELEVATION	= 37.8	FT
OVERTOPPING FREQUENCY	= 100+/-	YRS
OVERTOPPING DISCHARGE	= 114	CFS
OVERTOPPING ELEVATION	= 37.9	FT

PROJECT REFERENCE NO.	R-2514C	SHEET NO.	40
ROADWAY DESIGN ENGINEER	DANIEL W. GARDNER, JR.	HYDRAULICS ENGINEER	BOB E. ANDERSON
SEAL	033871	SEAL	032581
DATE	3/27/99	DATE	3/27/99



SEE SHEET 4 AND 26 FOR PLAN VIEW

**-LBUS-**



**DITCH LEGEND**

LEFT DITCH	-----	10
RIGHT DITCH	-----	10

SEE SHEET 27 FOR PLAN VIEW

F:\86205\01\Cadd\2514C\Roadway\Proj\2514C\_Rdy.plt.dgn