

5/28/99

PIPE HYDRAULIC DATA
Str.2306 Sta.277+39.30

DRAINAGE AREA	= 3.2	AC
DESIGN FREQUENCY	= 50	YRS
DESIGN DISCHARGE	= 21.4	CFS
DESIGN HW ELEVATION	= 28.8	FT
100 YEAR DISCHARGE	= 24	CFS
100 YEAR HW ELEVATION	= 28.9	FT
OVERTOPPING FREQUENCY	= <10	YRS
OVERTOPPING DISCHARGE	= 4J	CFS
OVERTOPPING ELEVATION	= 28.2	FT

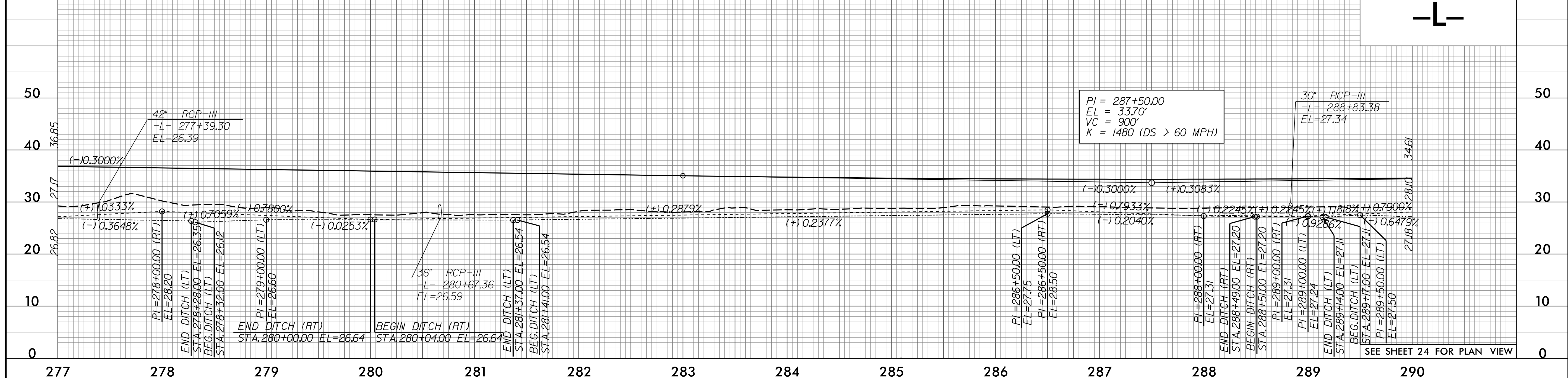
PIPE HYDRAULIC DATA
Str.2402 Sta.280+67.36

DRAINAGE AREA	= 13.9	AC
DESIGN FREQUENCY	= 50	YRS
DESIGN DISCHARGE	= 13.4	CFS
DESIGN HW ELEVATION	= 28.8	FT
100 YEAR DISCHARGE	= 16	CFS
100 YEAR HW ELEVATION	= 28.9	FT
OVERTOPPING FREQUENCY	= <10	YRS
OVERTOPPING DISCHARGE	= <1	CFS
OVERTOPPING ELEVATION	= 28.2	FT

PIPE HYDRAULIC DATA
Str.2408 Sta.288+83.38

DRAINAGE AREA	= 2.4	AC
DESIGN FREQUENCY	= 50	YRS
DESIGN DISCHARGE	= 4.7	CFS
DESIGN HW ELEVATION	= 28.8	FT
100 YEAR DISCHARGE	= 6.6	CFS
100 YEAR HW ELEVATION	= 28.9	FT
OVERTOPPING FREQUENCY	= <10	YRS
OVERTOPPING DISCHARGE	= <1	CFS
OVERTOPPING ELEVATION	= 28.1	FT

PROJECT REFERENCE NO.	R-2514C	SHEET NO.	39
ROADWAY DESIGN ENGINEER	DANIEL W. GARDNER, JR.	HYDRAULICS ENGINEER	BRUCE E. ANDERSON
SEAL	033871	SEAL	032581
DATE	3/27/99	DATE	3/27/99

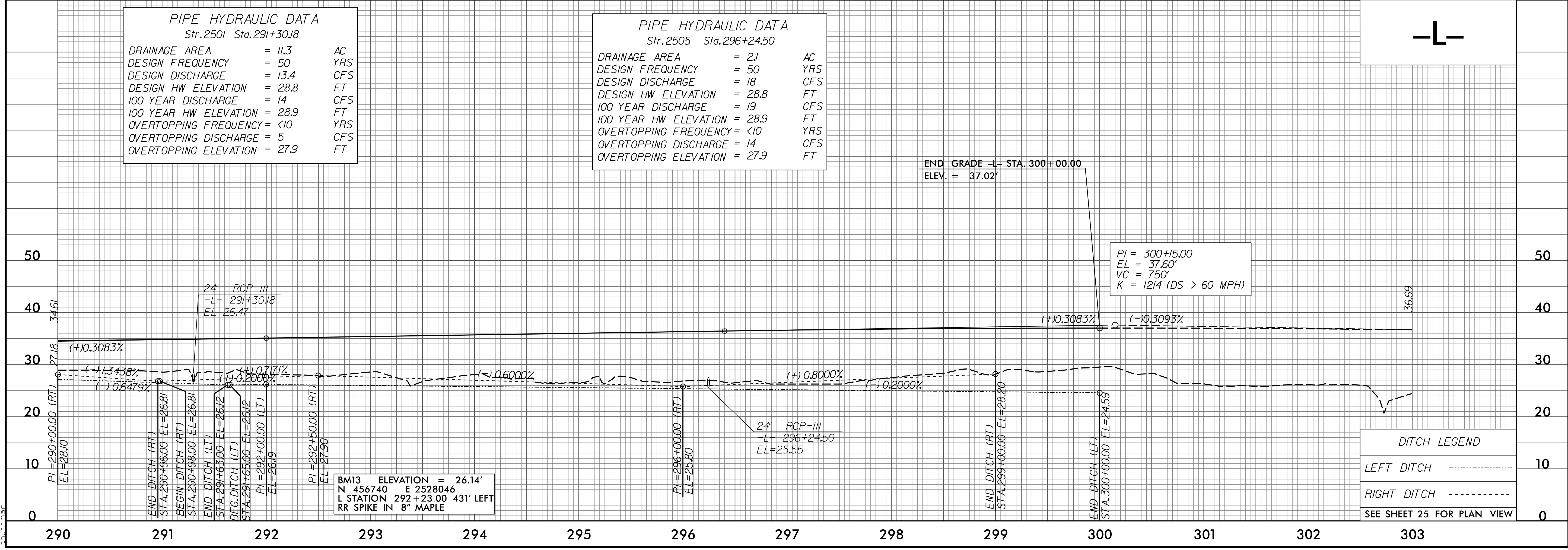


PIPE HYDRAULIC DATA
Str.2501 Sta.291+30J8

DRAINAGE AREA	= 11.3	AC
DESIGN FREQUENCY	= 50	YRS
DESIGN DISCHARGE	= 13.4	CFS
DESIGN HW ELEVATION	= 28.8	FT
100 YEAR DISCHARGE	= 14	CFS
100 YEAR HW ELEVATION	= 28.9	FT
OVERTOPPING FREQUENCY	= <10	YRS
OVERTOPPING DISCHARGE	= 5	CFS
OVERTOPPING ELEVATION	= 27.9	FT

PIPE HYDRAULIC DATA
Str.2505 Sta.296+24.50

DRAINAGE AREA	= 2J	AC
DESIGN FREQUENCY	= 50	YRS
DESIGN DISCHARGE	= 18	CFS
DESIGN HW ELEVATION	= 28.8	FT
100 YEAR DISCHARGE	= 19	CFS
100 YEAR HW ELEVATION	= 28.9	FT
OVERTOPPING FREQUENCY	= <10	YRS
OVERTOPPING DISCHARGE	= 14	CFS
OVERTOPPING ELEVATION	= 27.9	FT



DITCH LEGEND

LEFT DITCH	-----	10
RIGHT DITCH	-----	10

SEE SHEET 25 FOR PLAN VIEW

F:\86205\01\Cadd\2514C\Roadway\Proj\2514C_Rdy.plt.dgn