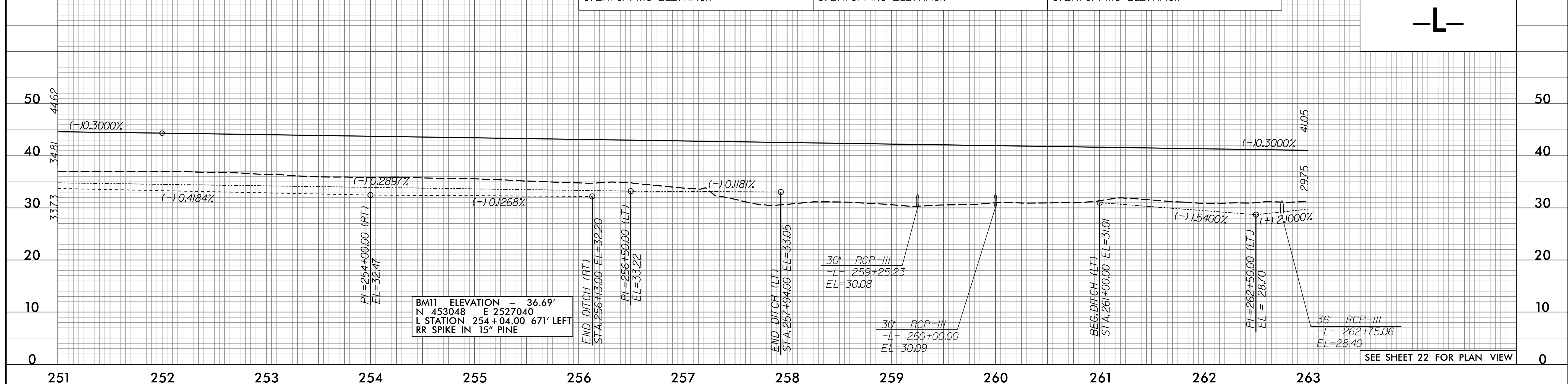


5/28/99

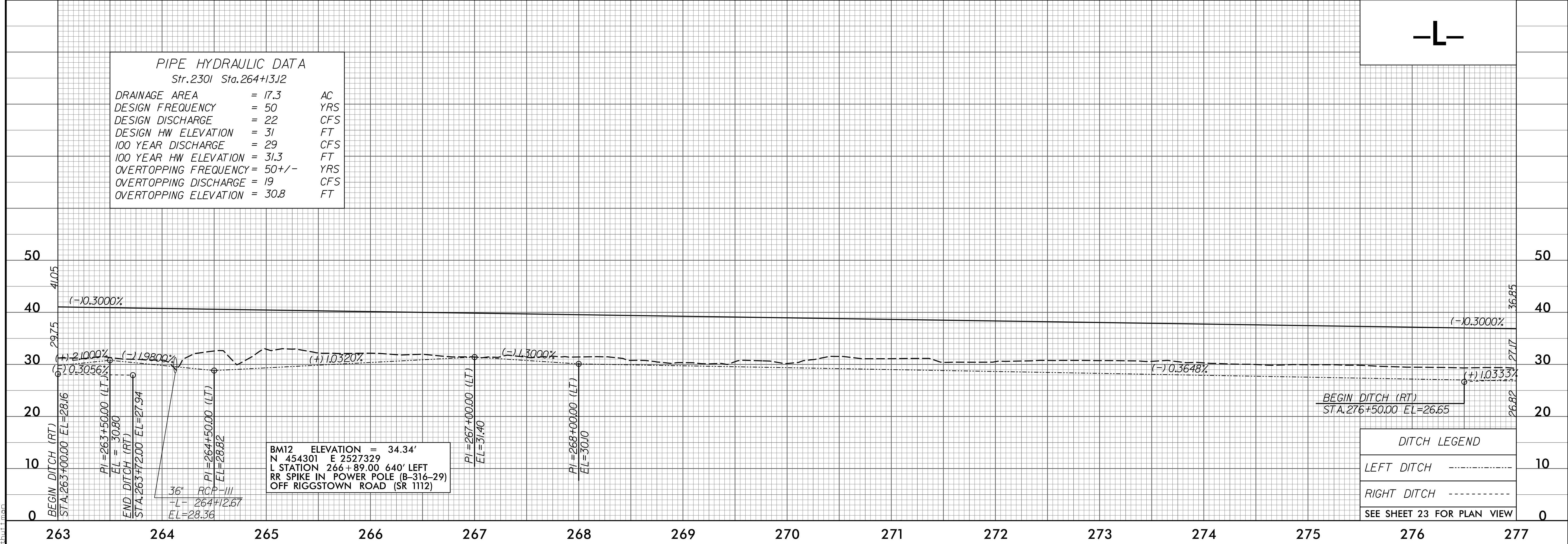
PIPE HYDRAULIC DATA Str.2203 Sta.259+25.23		PIPE HYDRAULIC DATA Str.2205 Sta.260+00		PIPE HYDRAULIC DATA Str.2209 Sta.262+75.06	
DRAINAGE AREA = 60.7	AC	DRAINAGE AREA = 60.7	AC	DRAINAGE AREA = 11	AC
DESIGN FREQUENCY = 50	YRS	DESIGN FREQUENCY = 50	YRS	DESIGN FREQUENCY = 50	YRS
DESIGN DISCHARGE = 7.9	CFS	DESIGN DISCHARGE = 7.9	CFS	DESIGN DISCHARGE = 25	CFS
DESIGN HW ELEVATION = 32	FT	DESIGN HW ELEVATION = 32	FT	DESIGN HW ELEVATION = 31	FT
100 YEAR DISCHARGE = 7.9	CFS	100 YEAR DISCHARGE = 7.9	CFS	100 YEAR DISCHARGE = 32	CFS
100 YEAR HW ELEVATION = 32	FT	100 YEAR HW ELEVATION = 32	FT	100 YEAR HW ELEVATION = 31.3	FT
OVERTOPPING FREQUENCY = <10	YRS	OVERTOPPING FREQUENCY = <10	YRS	OVERTOPPING FREQUENCY = 10+	YRS
OVERTOPPING DISCHARGE = 7.9	CFS	OVERTOPPING DISCHARGE = 7.9	CFS	OVERTOPPING DISCHARGE = 22	CFS
OVERTOPPING ELEVATION = 32	FT	OVERTOPPING ELEVATION = 32	FT	OVERTOPPING ELEVATION = 30.8	FT

PROJECT REFERENCE NO. R-2514C	SHEET NO. 38
ROADWAY DESIGN ENGINEER DANIEL W. GARDNER, JR. SEAL 033871 3/27/2005 DocuSigned by: Daniel W. Gardner, Jr.	HYDRAULICS ENGINEER BROOK E. ANDERSON SEAL 032581 3/27/2005 DocuSigned by: Brook E. Anderson



SEE SHEET 22 FOR PLAN VIEW

PIPE HYDRAULIC DATA Str.2301 Sta.264+13.12	
DRAINAGE AREA = 17.3	AC
DESIGN FREQUENCY = 50	YRS
DESIGN DISCHARGE = 22	CFS
DESIGN HW ELEVATION = 31	FT
100 YEAR DISCHARGE = 29	CFS
100 YEAR HW ELEVATION = 31.3	FT
OVERTOPPING FREQUENCY = 50+/-	YRS
OVERTOPPING DISCHARGE = 19	CFS
OVERTOPPING ELEVATION = 30.8	FT



DITCH LEGEND	
LEFT DITCH	-----
RIGHT DITCH	-----

SEE SHEET 23 FOR PLAN VIEW

F:\862501\Cadd\2514C\_Roadway\Proj\2514C\_Rdy.plt.dgn