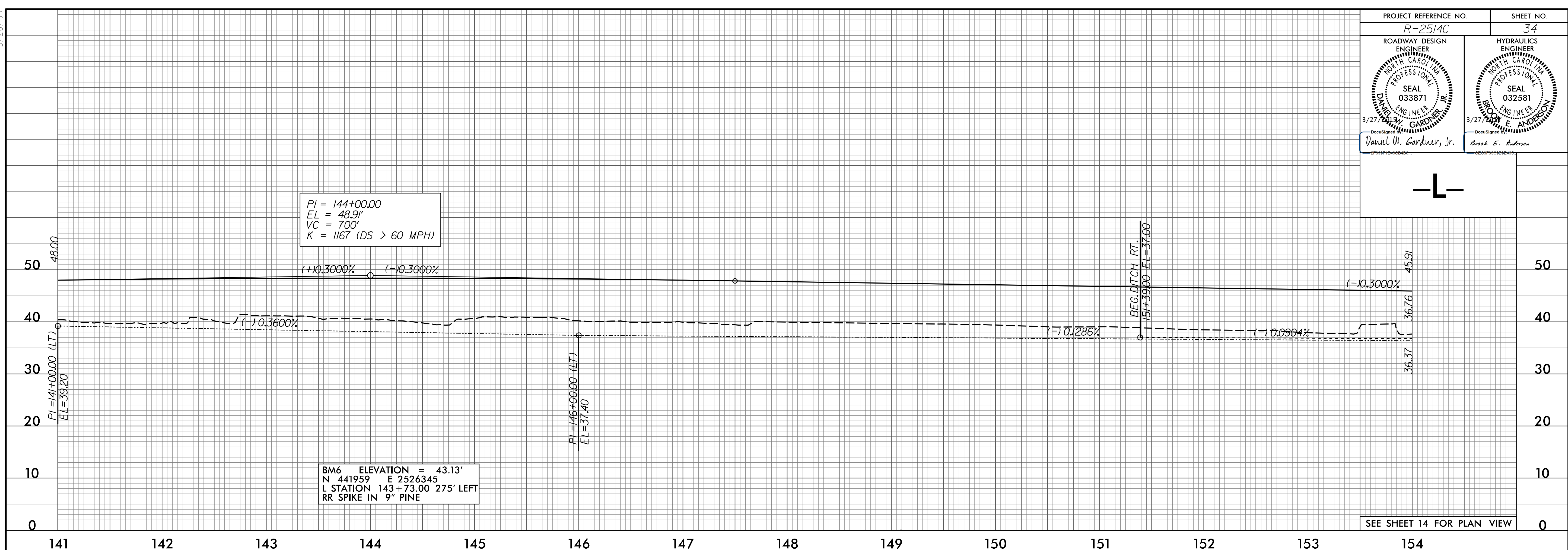


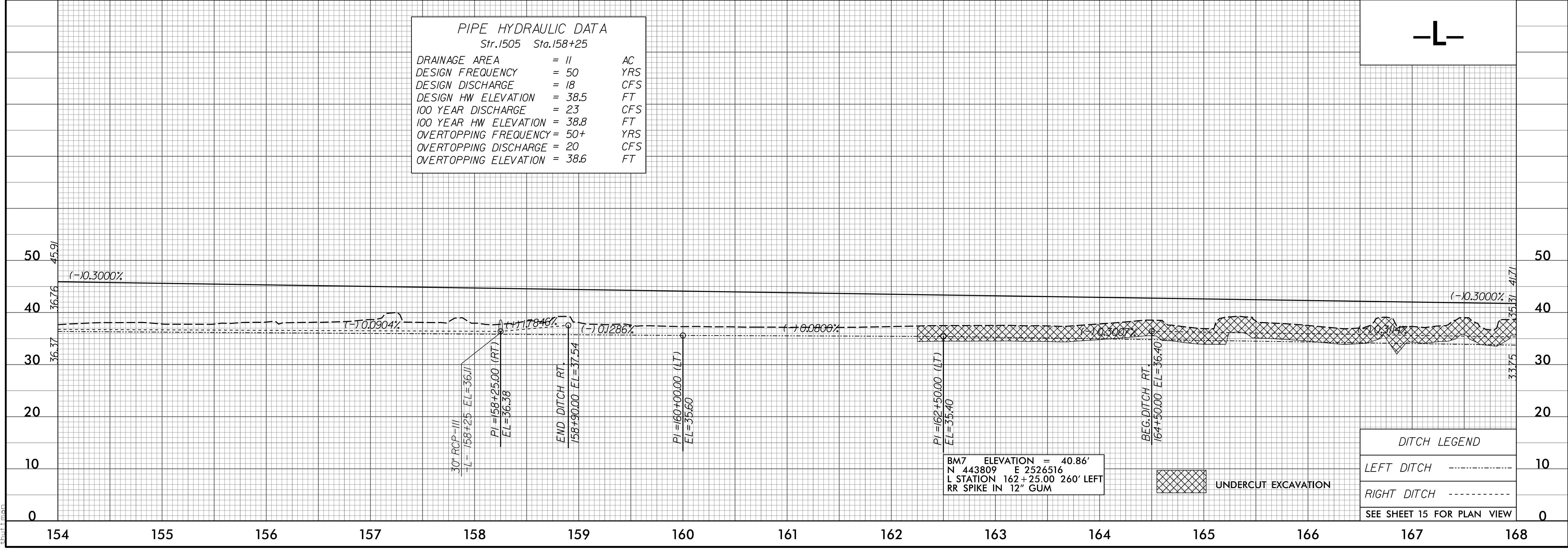
5/28/99

PROJECT REFERENCE NO. R-2514C	SHEET NO. 34
ROADWAY DESIGN ENGINEER DANIEL W. GARDNER, JR. SEAL 033871 3/27/99	HYDRAULICS ENGINEER BOB E. ANDERSON SEAL 032581 3/27/99



**PIPE HYDRAULIC DATA**  
Str. 1505 Sta. 158+25

DRAINAGE AREA	= 11	AC
DESIGN FREQUENCY	= 50	YRS
DESIGN DISCHARGE	= 18	CFS
DESIGN HW ELEVATION	= 38.5	FT
100 YEAR DISCHARGE	= 23	CFS
100 YEAR HW ELEVATION	= 38.8	FT
OVERTOPPING FREQUENCY	= 50+	YRS
OVERTOPPING DISCHARGE	= 20	CFS
OVERTOPPING ELEVATION	= 38.6	FT



F:\18\2015\01\Cadd\2514C\Roadway\Proj\2514C\_Rdy.plt.dgn