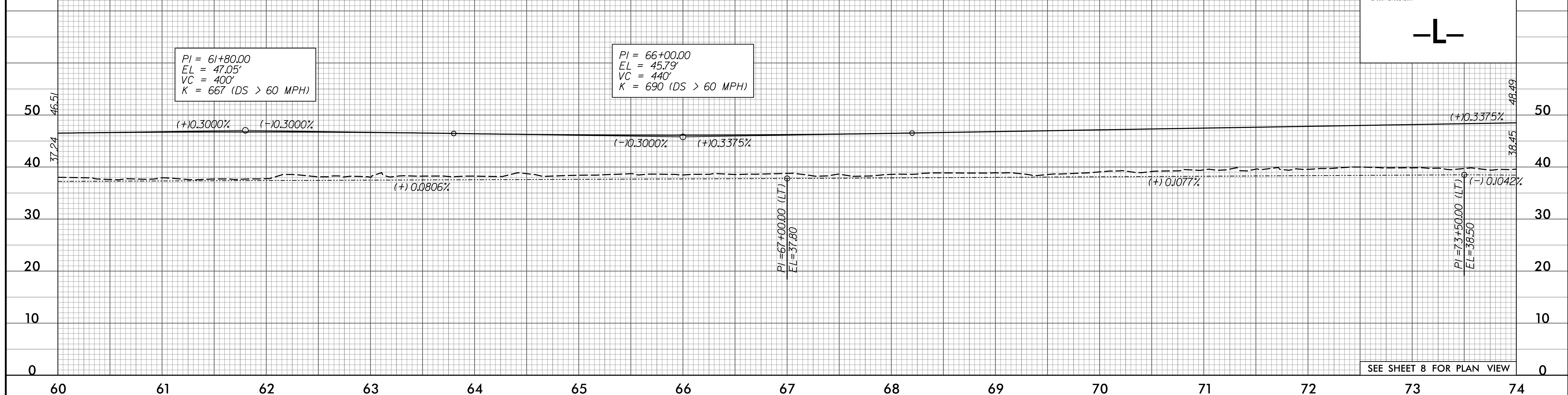


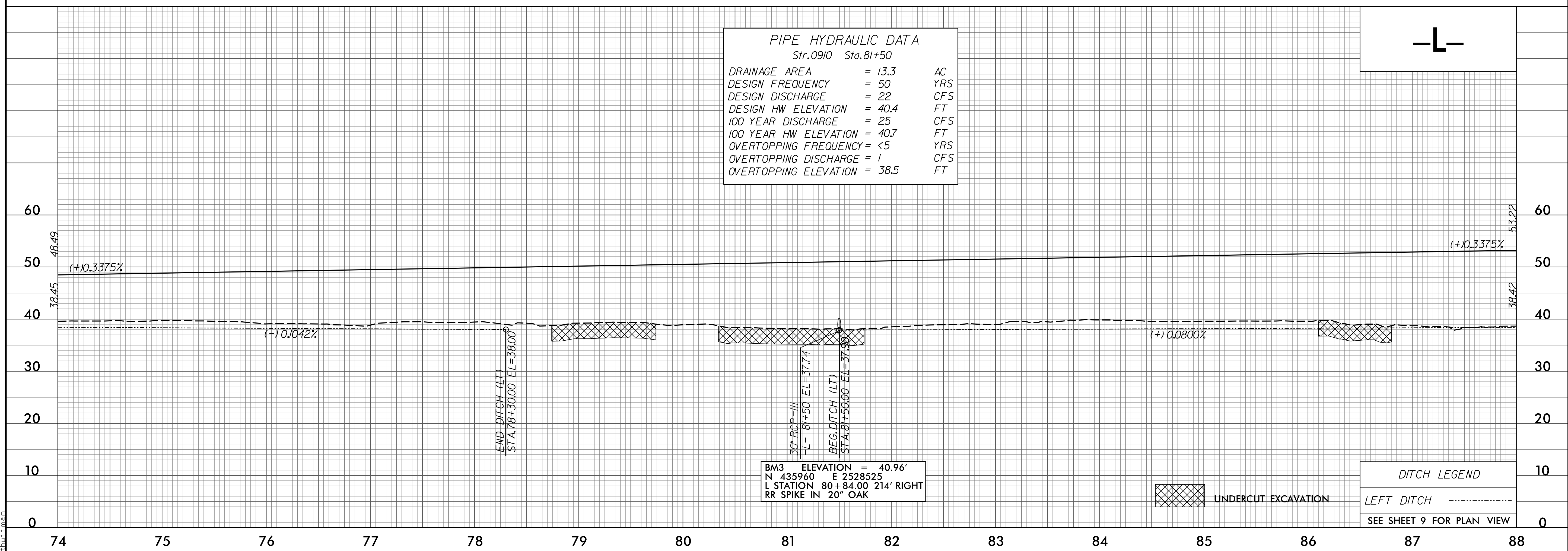
5/28/99

PROJECT REFERENCE NO. R-2514C	SHEET NO. 31
ROADWAY DESIGN ENGINEER DANIEL W. GARDNER, JR. SEAL 033871 3/27/99	HYDRAULICS ENGINEER BROOK E. ANDERSON SEAL 032581 3/27/99



SEE SHEET 8 FOR PLAN VIEW

PIPE HYDRAULIC DATA		
Str. 0910 Sta. 81+50		
DRAINAGE AREA	= 13.3	AC
DESIGN FREQUENCY	= 50	YRS
DESIGN DISCHARGE	= 22	CFS
DESIGN HW ELEVATION	= 40.4	FT
100 YEAR DISCHARGE	= 25	CFS
100 YEAR HW ELEVATION	= 40.7	FT
OVERTOPPING FREQUENCY	= <5	YRS
OVERTOPPING DISCHARGE	= 1	CFS
OVERTOPPING ELEVATION	= 38.5	FT



BM3 ELEVATION = 40.96'
 N 435960 E 2528525
 L STATION 80+84.00 214' RIGHT
 RR SPIKE IN 20" OAK

UNDERCUT EXCAVATION

DITCH LEGEND	
LEFT DITCH	-----
SEE SHEET 9 FOR PLAN VIEW	

F:\18\2015\01\Cadd\2514C\Roadway\Proj\2514C_Rdy.plt.dgn