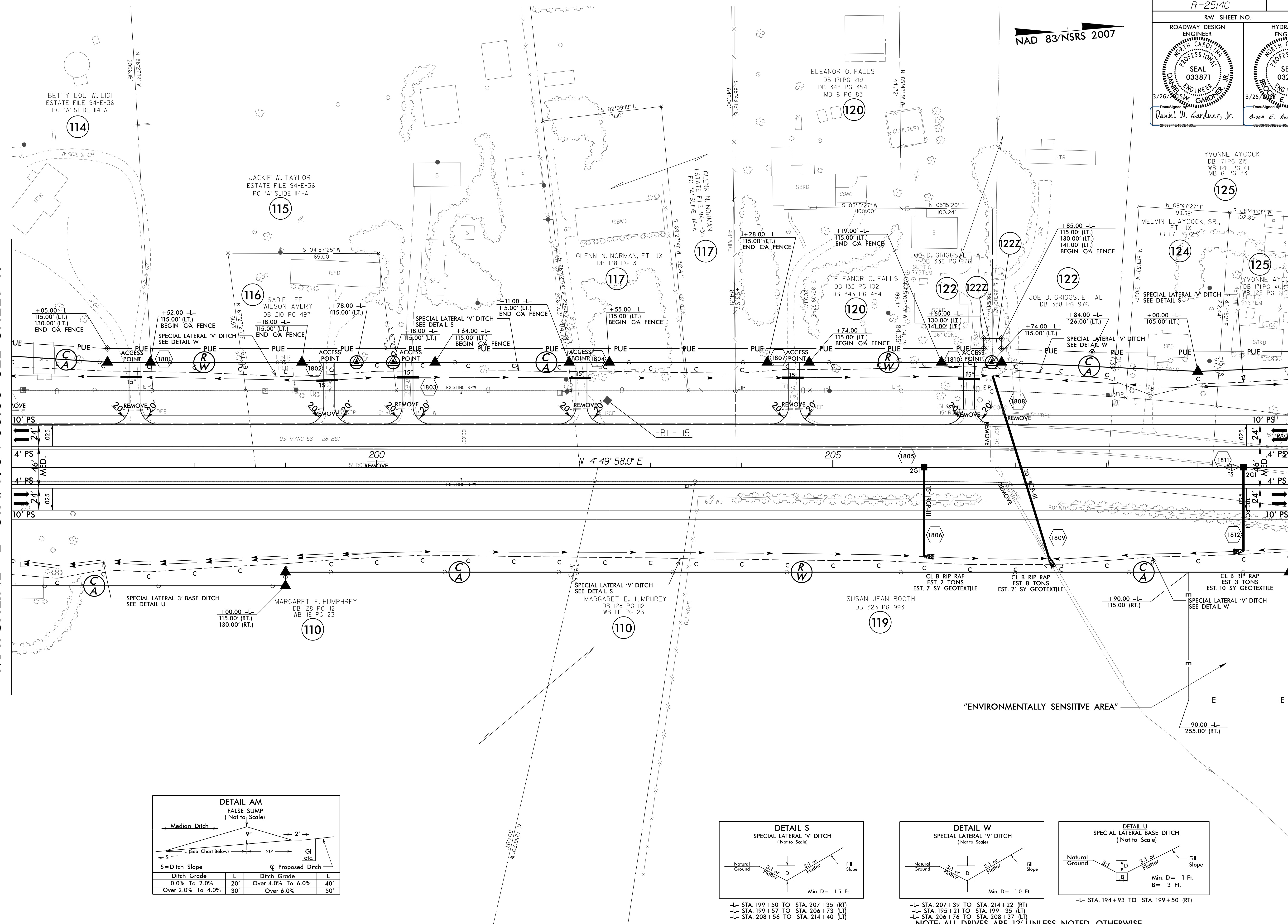


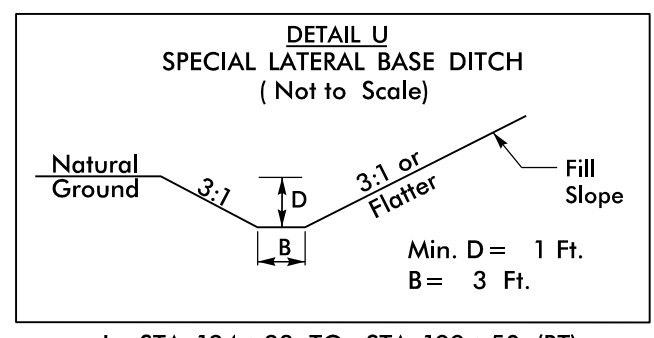
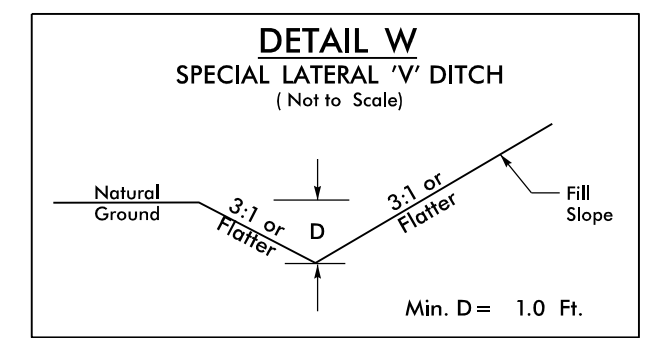
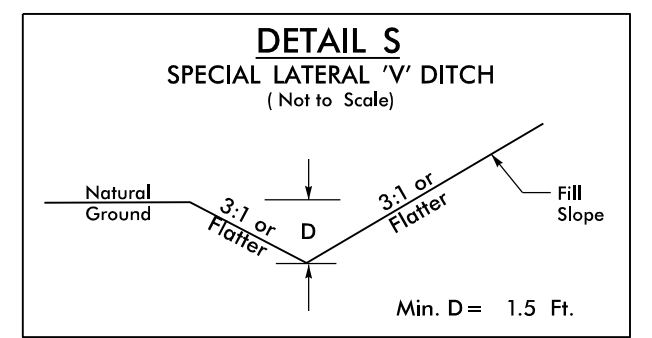
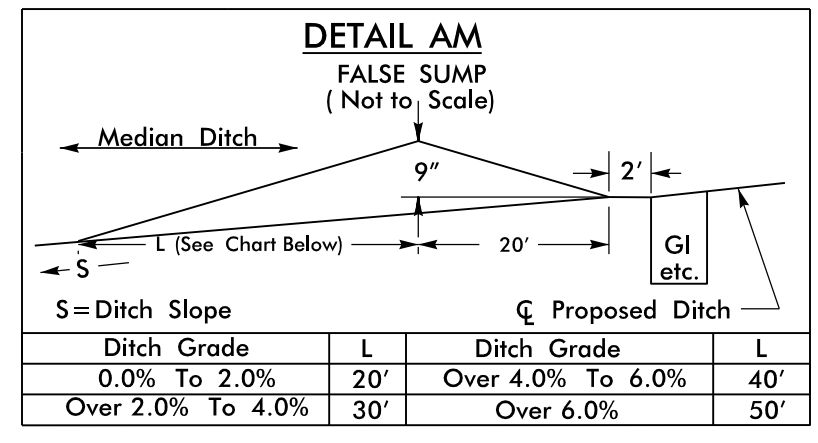
NAD 83/NSRS 2007

MATCHLINE -L- STA. 196 + 00.00 SEE SHEET 17

MATCHLINE -L- STA. 210 + 00.00 SEE SHEET 19



REVISIONS



-L- STA. 199+50 TO STA. 207+35 (RT)
-L- STA. 199+57 TO STA. 206+73 (LT)
-L- STA. 208+56 TO STA. 214+40 (LT)

-L- STA. 207+39 TO STA. 214+22 (RT)
-L- STA. 195+21 TO STA. 199+35 (LT)
-L- STA. 206+76 TO STA. 208+37 (LT)

-L- STA. 194+93 TO STA. 199+50 (RT)

NOTE: ALL DRIVES ARE 12' UNLESS NOTED OTHERWISE.
PAVE ALL DRIVES TO BACK OF TURNOUT RADIUS.
SEE SHEET 2A-5 FOR DRIVEWAY PROFILE DETAILS.

SEE SHEET 36 FOR -L- PROFILE

8/17/99
P:\2015\150322\150322.dwg
C:\Users\jgardner\OneDrive\Documents\Roadway\Proj\NR2514C\RDwy_psh_18.dgn
3/23/2015 10:53:21 AM