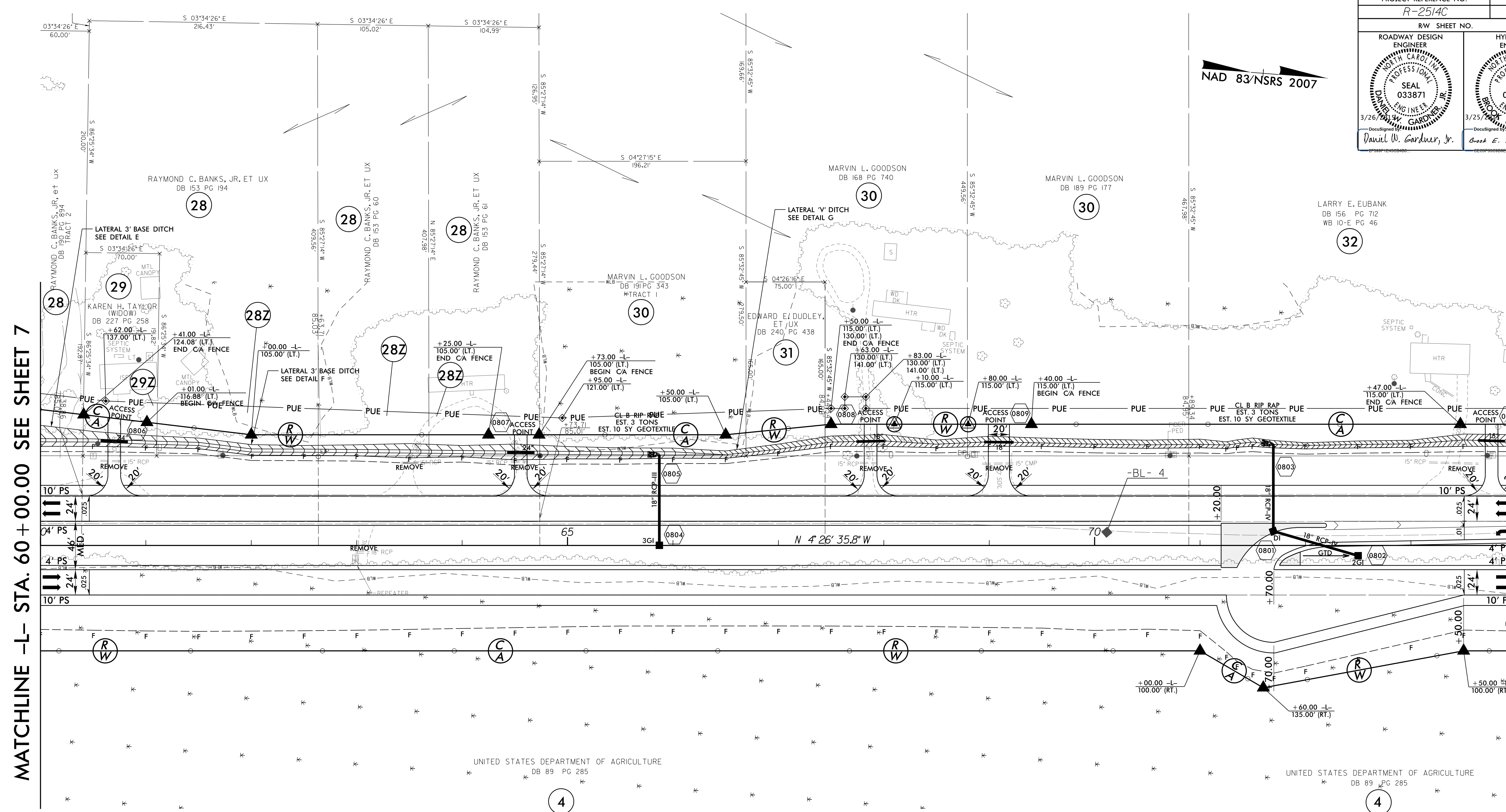


PROJECT REFERENCE NO. R-2514C	SHEET NO. 8
RW SHEET NO.	
ROADWAY DESIGN ENGINEER SEAL 033871 DANIEL W. GARDNER, JR. 3/26/2015	HYDRAULICS ENGINEER SEAL 032581 BOB E. ANDERSON 3/25/2015

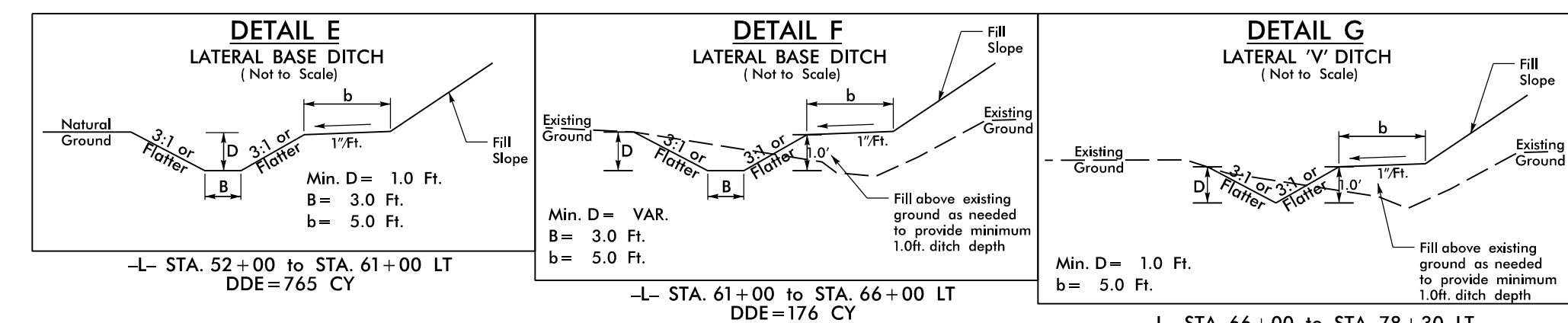
NAD 83/NSRS 2007



MATCHLINE -L- STA. 60 + 00.00 SEE SHEET 7

MATCHLINE -L- STA. 74 + 00.00 SEE SHEET 9

REVISIONS



NOTE: ALL DRIVES ARE 12' UNLESS NOTED OTHERWISE. PAVE ALL DRIVES TO BACK OF TURNOUT RADIUS. SEE SHEET 2A-5 FOR DRIVEWAY PROFILE DETAILS. SEE SHEET 31 FOR -L- PROFILE

8/17/09
8/18/2015
P:\Roadway\2015\Roadway\Proj\NR2514C\RD\psh_08.dgn
D:\Work\2015\Roadway\2015\Roadway\Proj\NR2514C\RD\psh_08.dgn