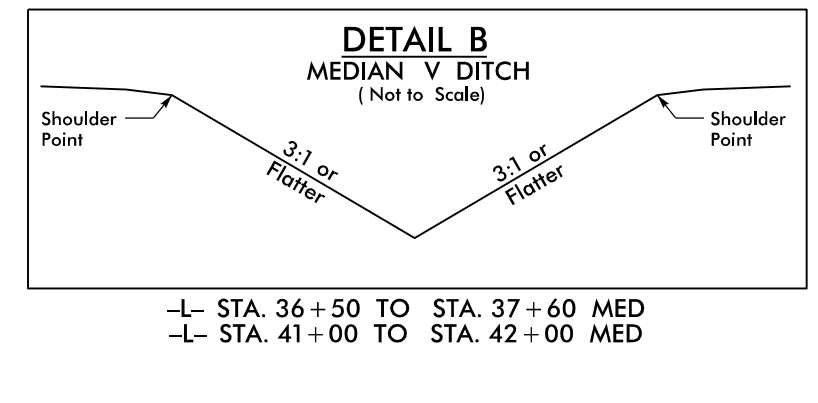
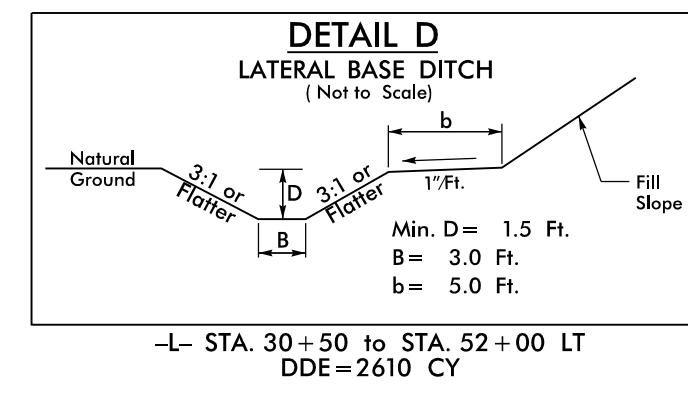
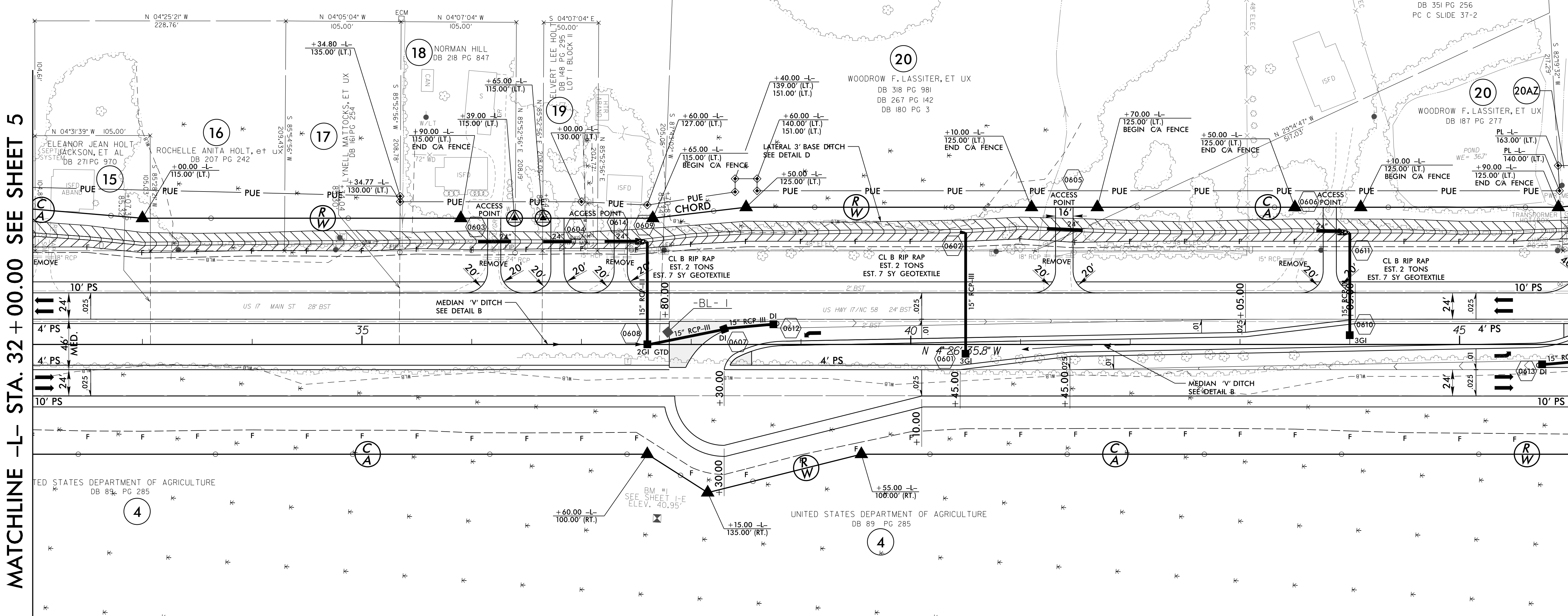


NAD 83/NSRS 2007

MATCHLINE -L- STA. 32 + 00.00 SEE SHEET 5

MATCHLINE -L- STA. 46 + 00.00 SEE SHEET 7



NOTE: ALL DRIVES ARE 12' UNLESS NOTED OTHERWISE.
PAVE ALL DRIVES TO BACK OF TURNOUT RADIUS.
SEE SHEET 2A-5 FOR DRIVEWAY PROFILE DETAILS.

SEE SHEET 30 FOR -L- PROFILE

REVISIONS

8/17/99

3/18/2015
P:\862501\Cadd\2514C\Roadway\Proj\NR2514C_Rdwy_psh_06.dgn