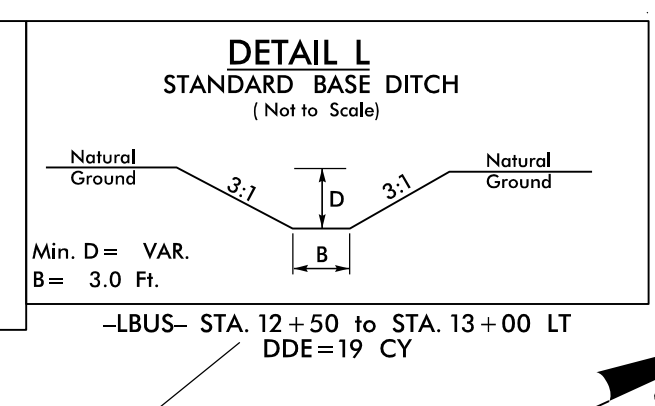
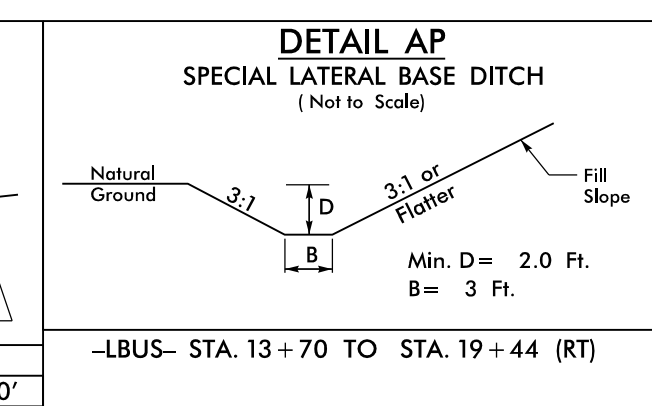
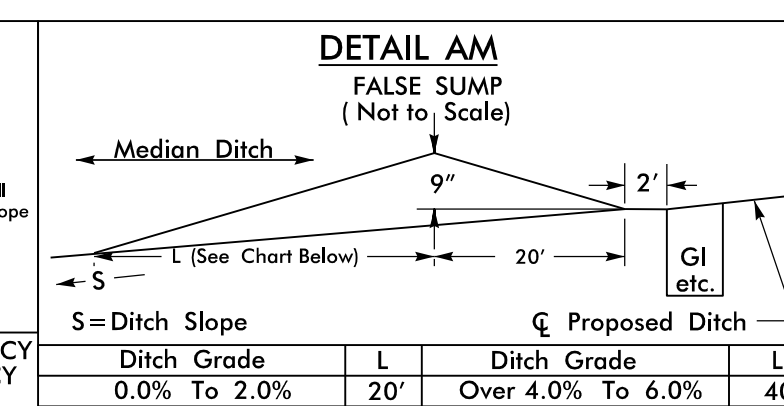
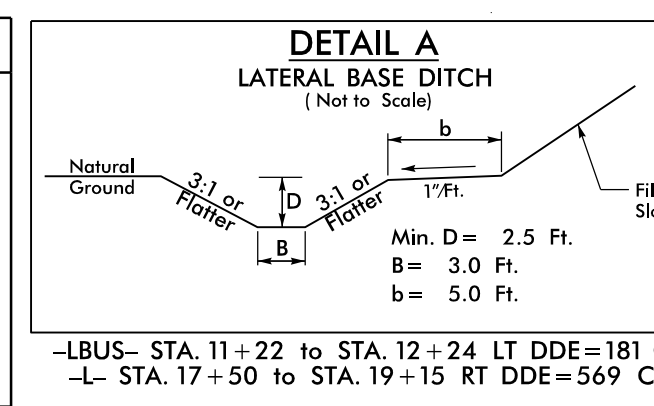
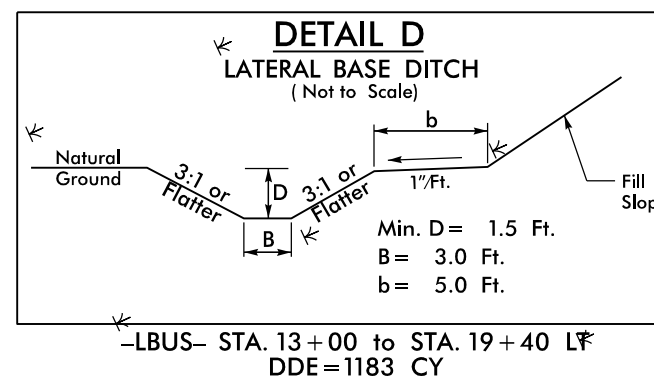
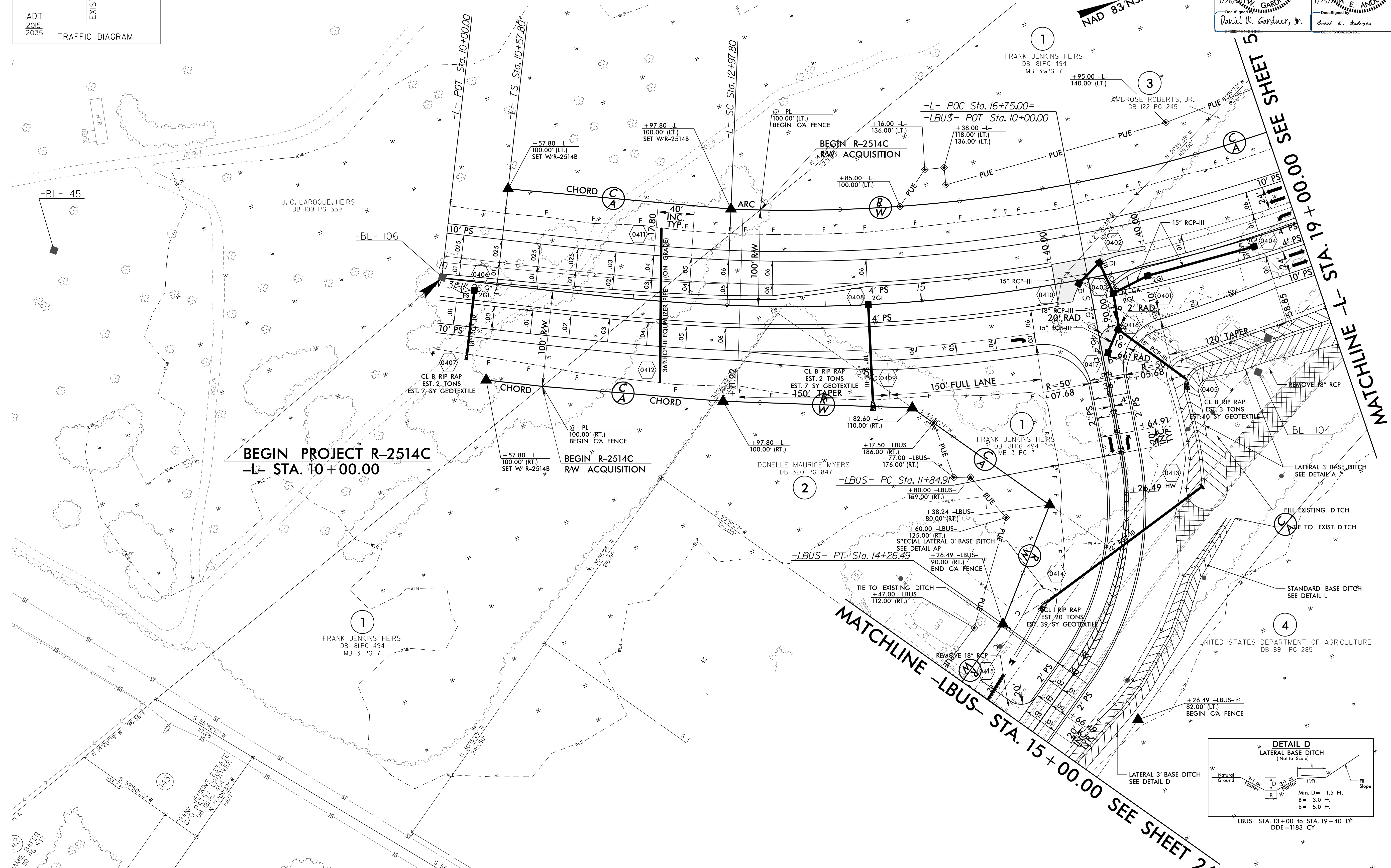


-L-	-LBUS-
PI Sta 12+17.85 $\Theta_s = 4' 11'' 32.5''$ $L_s = 240.00'$ $LT = 160.04'$ $ST = 80.04'$	PI Sta 16+95.31 $\Delta = 27' 14'' 57.6'' (LT)$ $D = 3' 29'' 37.1''$ $L = 779.97'$ $T = 1,640.00'$ $SE = .06$ $RO = 240'$
PI Sta 13+12.68 $\Delta = 46' 08'' 20.6'' (RT)$ $D = 19' 05'' 54.9''$ $L = 241.58'$ $T = 127.77'$ $R = 300.00'$ $SE = SEE PLANS$	



PROJECT REFERENCE NO. R-2514C	SHEET NO. 4
ROADWAY DESIGN ENGINEER SEAL 033871 3/26/2015 Daniel W. Gardner, Jr.	HYDRAULICS ENGINEER SEAL 032581 3/25/2015 Brook E. Anderson



SEE SHEET 29 FOR -L- PROFILE  
 SEE SHEET 40 FOR -LBUS- PROFILE

REVISIONS

3/20/2015: C:\Cadd\Roadway\Proj\R2514C\_R2514C\_R2514C.dgn  
 3/20/2015: C:\Cadd\Roadway\Proj\R2514C\_R2514C\_R2514C.dgn  
 3/20/2015: C:\Cadd\Roadway\Proj\R2514C\_R2514C\_R2514C.dgn