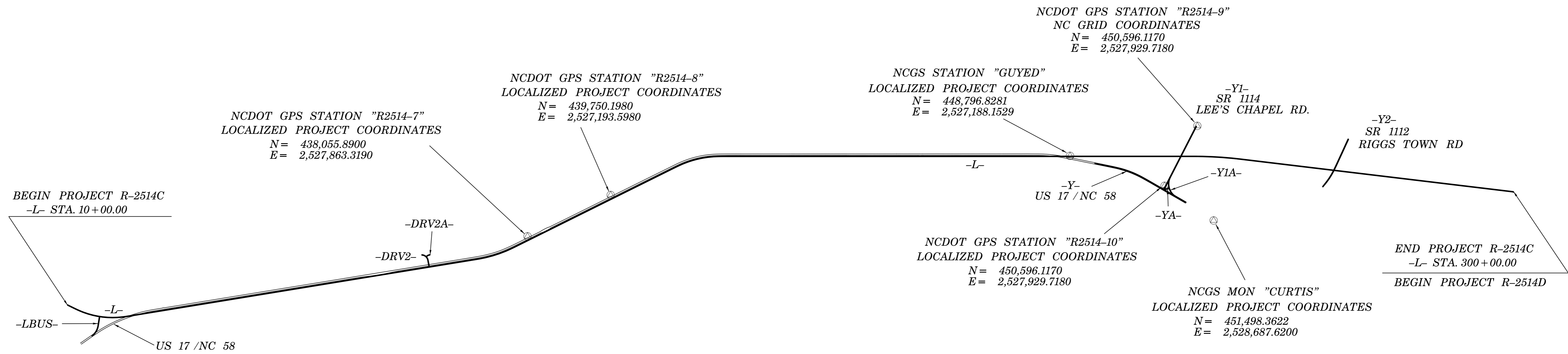


6/2/09

SURVEY CONTROL SHEET R-2514C

PROJECT REFERENCE NO. R-2514C	SHEET NO. 1C-1
Location and Surveys	



1. THE CONTROL DATA FOR THIS PROJECT CAN BE FOUND ELECTRONICALLY BY SELECTING PROJECT CONTROL DATA AT:
[HTTP://WWW.NCDOT.ORG/DOH/PRECONSTRUCT/HIGHWAY/LOCATION/PROJECT/](http://www.ncdot.org/doh/preconstruct/highway/location/project/)

THE FILES TO BE FOUND ARE AS FOLLOWS:
 R2514C_LS_CONTROL.TXT
 R2514_LS_GPSCALIB.HTML
 R2514_LS_WGS84.TXT
 R2514_LS_LOCAL.TXT

⊙ INDICATES GEODETIC CONTROL MONUMENTS USED OR SET FOR HORIZONTAL PROJECT CONTROL BY THE NCDOT LOCATION AND SURVEYS UNIT.
 PROJECT CONTROL ESTABLISHED USING GLOBAL POSITIONING SYSTEM.
 NETWORK ESTABLISHED FROM NGS ONLINE POSITIONING SERVICE (OPUS)
 SEE GPS CALIBRATION SHEET FOR HORIZONTAL AND VERTICAL COORDINATE VALUES.
 IF FURTHER INFORMATION IS NEEDED, PLEASE CONTACT THE LOCATION AND SURVEYS UNIT.

DATUM DESCRIPTION
 THE LOCALIZED COORDINATE SYSTEM DEVELOPED FOR THIS PROJECT IS BASED ON THE STATE PLANE COORDINATES ESTABLISHED BY NCDOT FOR MONUMENT "R2514-9"
 WITH NAD 83/NSRS 2007 STATE PLANE GRID COORDINATES OF NORTHING: 451335.4480 (ft) EASTING: 2526812.771 (ft) ELEVATION: 38.950 (ft)
 THE AVERAGE COMBINED GRID FACTOR USED ON THIS PROJECT (GROUND TO GRID) IS: 0.999887960
 THE N.C. LAMBERT GRID BEARING AND LOCALIZED HORIZONTAL GROUND DISTANCE FROM "GPS R2514-9" TO -L- STATION 10+00.00 IS
 S04°09'54.41"E 22,449.166'
 ALL LINEAR DIMENSIONS ARE LOCALIZED HORIZONTAL DISTANCES
 VERTICAL DATUM USED IS NAVD 88

NOTE: DRAWING NOT TO SCALE

18-MAR-2015 07:55 R2514C-LS-1C-1.dgn