
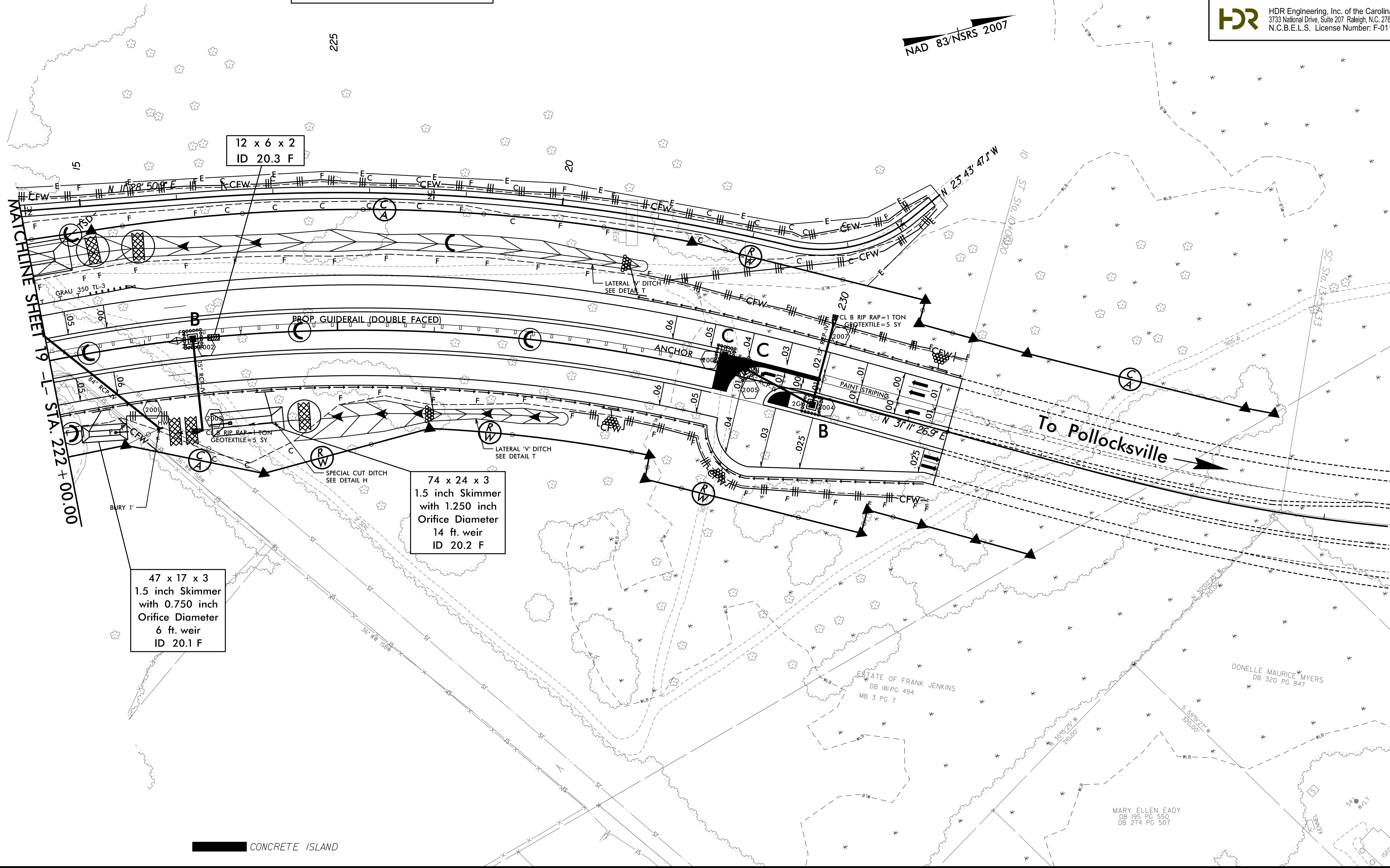


PROJECT REFERENCE NO.	SHEET NO.
R-2514B	EC-41 /CONST.20
RW SHEET NO.	
ROADWAY DESIGN ENGINEER	HYDRAULICS ENGINEER
 HDR Engineering, Inc. of the Carolinas 3733 National Drive, Suite 207 Raleigh, N.C. 27612 N.C.B.E.L.S. License Number: F-0116	

Place Matting or Compost Blanket for Erosion Control on Slope as Work Allows.
 Sta. 223+00 RT to Sta. 223+50 RT
 Sta. 223+50 RT to Sta. 225+50 RT
 Sta. 228+00 RT to Sta. 231+50 RT
 Sta. 220+50 LT to Sta. 231+50 LT

REVISIONS
 R/W Revision 4/9/14 JCL Added "No Claim" Note on parcels with no taking. Extended Proposed R/W Lines Across Parcel 34, Deleted Parcel #s 36, 37 and 38



CONCRETE ISLAND

1/22/2015
 R-2514B-EC-FINAL_PSH.dgn
 2:44:42 PM

8/17/99