


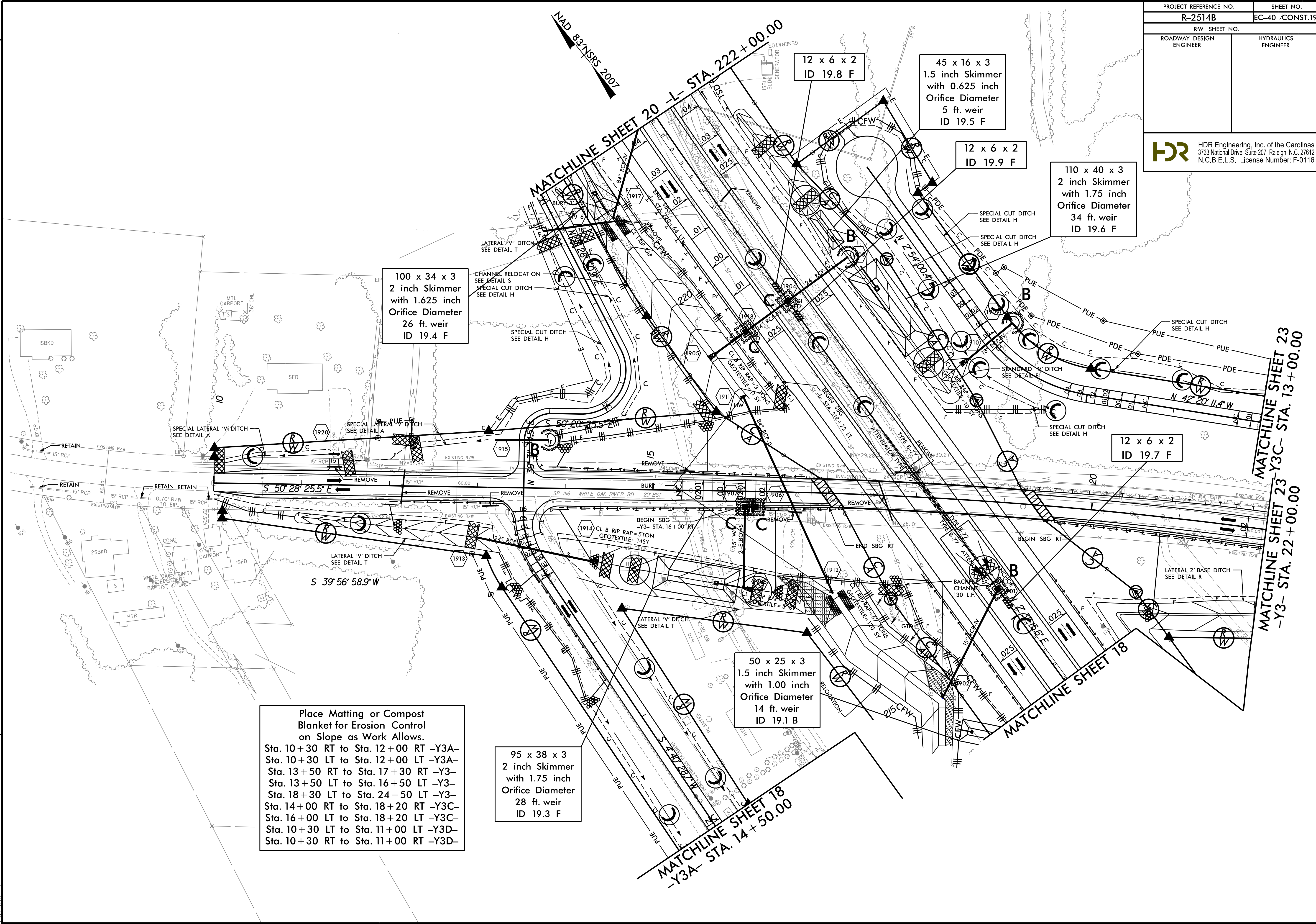
|   |                     |
|---|---------------------|
| PROJECT REFERENCE NO.   | SHEET NO.           |
| R-2514B   | EC-40 /CONST.19     |
| RW SHEET NO.  |                     |
| ROADWAY DESIGN ENGINEER   | HYDRAULICS ENGINEER |
|  HDR Engineering, Inc. of the Carolinas<br>3733 National Drive, Suite 207 Raleigh, N.C. 27612<br>N.C.B.E.L.S. License Number: F-0116 |                     |

8/17/99

REVISIONS

R/W Revision 5/26/14 JCL Added new Permanent Utility Easements (PUE) to Parcel 34.

1/22/2015  
 2514B-EC-FINAL\_PSH.dgn  
 5:44:38 PM



100 x 34 x 3  
 2 inch Skimmer  
 with 1.625 inch  
 Orifice Diameter  
 26 ft. weir  
 ID 19.4 F

12 x 6 x 2  
 ID 19.8 F

45 x 16 x 3  
 1.5 inch Skimmer  
 with 0.625 inch  
 Orifice Diameter  
 5 ft. weir  
 ID 19.5 F

12 x 6 x 2  
 ID 19.9 F

110 x 40 x 3  
 2 inch Skimmer  
 with 1.75 inch  
 Orifice Diameter  
 34 ft. weir  
 ID 19.6 F

12 x 6 x 2  
 ID 19.7 F

50 x 25 x 3  
 1.5 inch Skimmer  
 with 1.00 inch  
 Orifice Diameter  
 14 ft. weir  
 ID 19.1 B

Place Matting or Compost  
 Blanket for Erosion Control  
 on Slope as Work Allows.  
 Sta. 10+30 RT to Sta. 12+00 RT -Y3A-  
 Sta. 10+30 LT to Sta. 12+00 LT -Y3A-  
 Sta. 13+50 RT to Sta. 17+30 RT -Y3-  
 Sta. 13+50 LT to Sta. 16+50 LT -Y3-  
 Sta. 18+30 LT to Sta. 24+50 LT -Y3-  
 Sta. 14+00 RT to Sta. 18+20 RT -Y3C-  
 Sta. 16+00 LT to Sta. 18+20 LT -Y3C-  
 Sta. 10+30 LT to Sta. 11+00 LT -Y3D-  
 Sta. 10+30 RT to Sta. 11+00 RT -Y3D-

95 x 38 x 3  
 2 inch Skimmer  
 with 1.75 inch  
 Orifice Diameter  
 28 ft. weir  
 ID 19.3 F

NAD 83/NSRS 2007

MATCHLINE SHEET 20 - STA. 222+00.00

MATCHLINE SHEET 23 - STA. 13+00.00  
 -Y3- STA. 22+00.00

MATCHLINE SHEET 18 - STA. 14+50.00