

PROJECT REFERENCE NO.	SHEET NO.
R-2514B	EC-30 /CONST.9
RW SHEET NO.	
ROADWAY DESIGN ENGINEER	HYDRAULICS ENGINEER

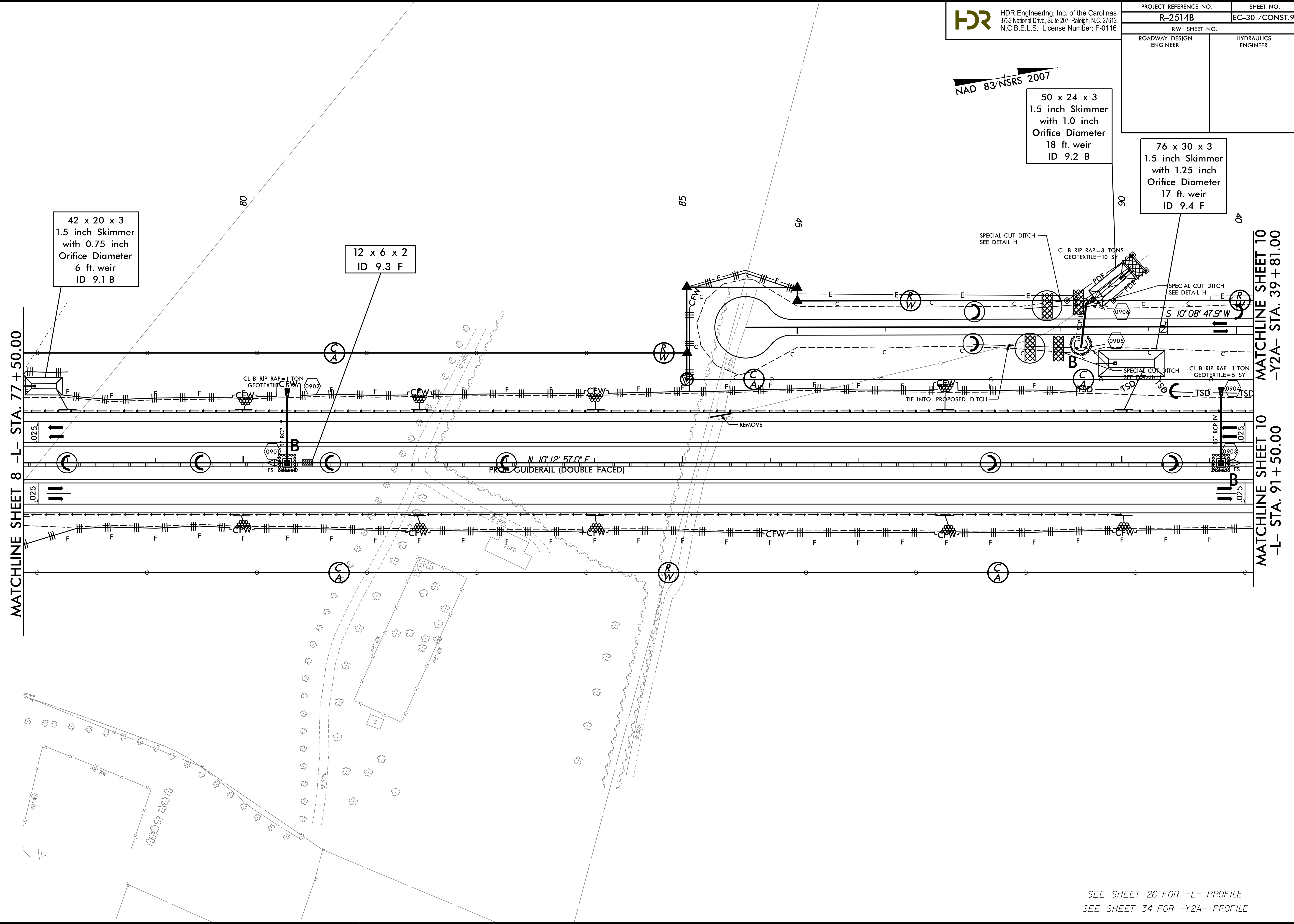
NAD 83/NSRS 2007

50 x 24 x 3  
 1.5 inch Skimmer  
 with 1.0 inch  
 Orifice Diameter  
 18 ft. weir  
 ID 9.2 B

76 x 30 x 3  
 1.5 inch Skimmer  
 with 1.25 inch  
 Orifice Diameter  
 17 ft. weir  
 ID 9.4 F

42 x 20 x 3  
 1.5 inch Skimmer  
 with 0.75 inch  
 Orifice Diameter  
 6 ft. weir  
 ID 9.1 B

12 x 6 x 2  
 ID 9.3 F



REVISIONS  
 R/W Revision 5/11/14 JCL Realigned -Y2A- and Adjusted Proposed R/W, Permanent Drainage and Temporary Construction Easements on Parcels IO and II.

1/22/2015  
 R-2514B-EC-FINAL\_PSH.dgn  
 2:44:08 PM

SEE SHEET 26 FOR -L- PROFILE  
 SEE SHEET 34 FOR -Y2A- PROFILE