


PROJECT REFERENCE NO.	SHEET NO.
R-2514B	EC-21/CONST.21
RW SHEET NO.	
ROADWAY DESIGN ENGINEER	HYDRAULICS ENGINEER
 HDR Engineering, Inc. of the Carolinas 3733 National Drive, Suite 207 Raleigh, N.C. 27612 N.C.B.E.L.S. License Number: F-0116	

CLEARING AND GRUBBING
EROSION CONTROL FOR
CONSTRUCTION SHEET 21

NOTE:
PLACE TEMPORARY ROCK SEDIMENT DAMS TYPE - B
AND TEMPORARY ROCK SILT CHECKS TYPE - A AT
DRAINAGE OUTLETS.

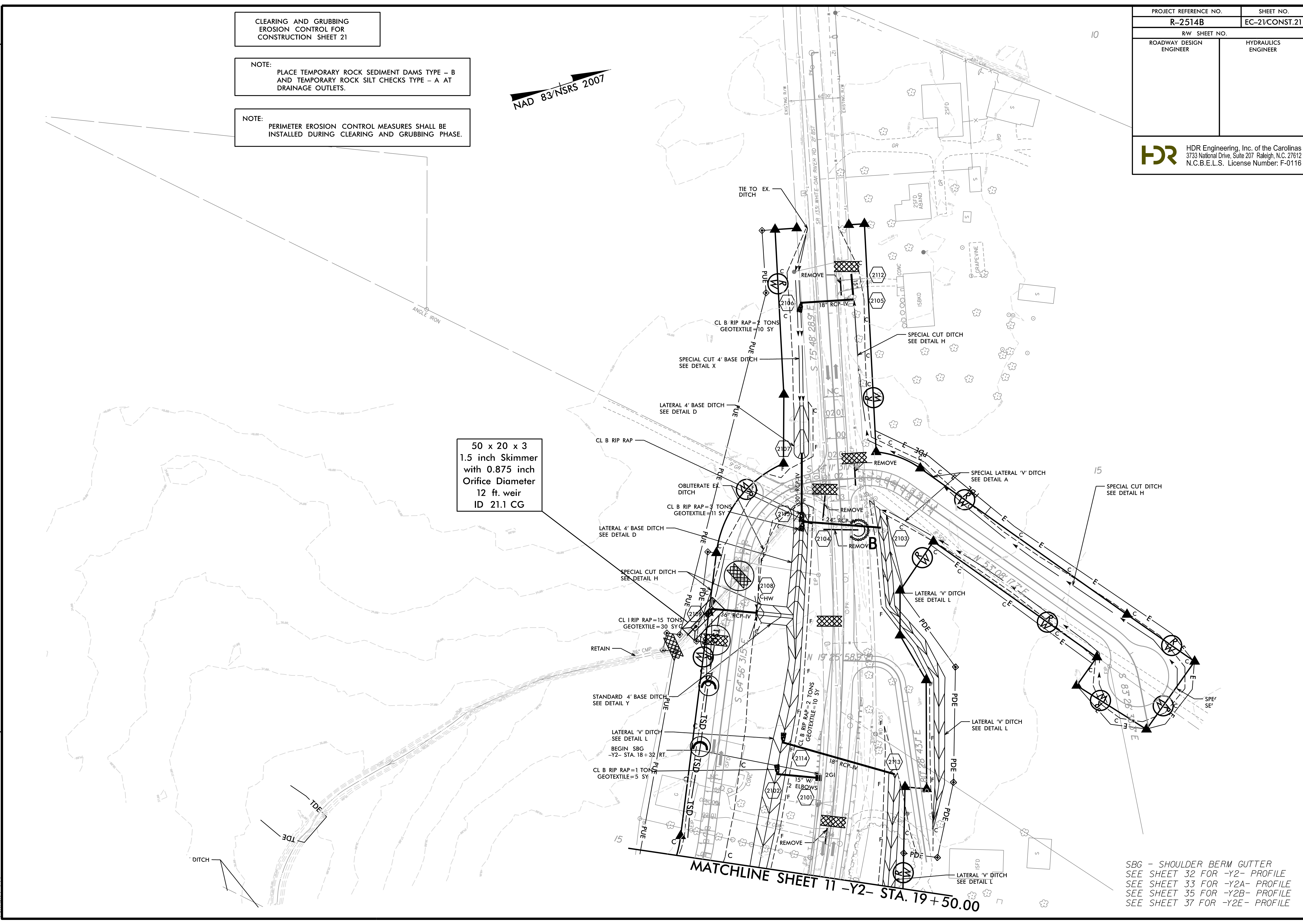
NOTE:
PERIMETER EROSION CONTROL MEASURES SHALL BE
INSTALLED DURING CLEARING AND GRUBBING PHASE.

NAD 83/NSRS 2007

REVISIONS
 R/W Revision 6/26/14 JCL Added new Permanent Utility Easement (PUE) to Parcels 13,16,18 and 41. Revised PUE on Parcel 39.
 R/W Revision 9/23/14 GM Revised owner of Parcel 39 to Dennis W. Saulter and added estate file reference. Revised PUE on Parcel 39. Eliminated PUE on Parcel 18.

8/17/99

1/22/2015
 R-2514B-EC-CG_PSH.dgn
 2514B-EC-CG_PSH.dgn



SBG - SHOULDER BERM GUTTER
SEE SHEET 32 FOR -Y2- PROFILE
SEE SHEET 33 FOR -Y2A- PROFILE
SEE SHEET 35 FOR -Y2B- PROFILE
SEE SHEET 37 FOR -Y2E- PROFILE