
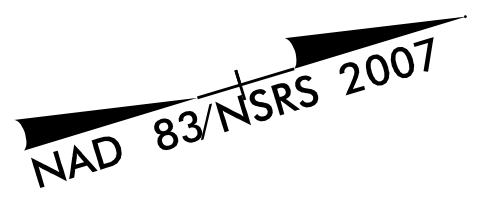


PROJECT REFERENCE NO.		SHEET NO.	
R-2514B		EC-15 / CONST.15	
RW SHEET NO.			
ROADWAY DESIGN ENGINEER		HYDRAULICS ENGINEER	
 HDR Engineering, Inc. of the Carolinas 3733 National Drive, Suite 207 Raleigh, N.C. 27612 N.C.B.E.L.S. License Number: F-0116			

CLEARING AND GRUBBING
EROSION CONTROL FOR
CONSTRUCTION SHEET 15

NOTE:
PLACE TEMPORARY ROCK SEDIMENT DAMS TYPE - B
AND TEMPORARY ROCK SILT CHECKS TYPE - A AT
DRAINAGE OUTLETS.

NOTE:
PERIMETER EROSION CONTROL MEASURES SHALL BE
INSTALLED DURING CLEARING AND GRUBBING PHASE.

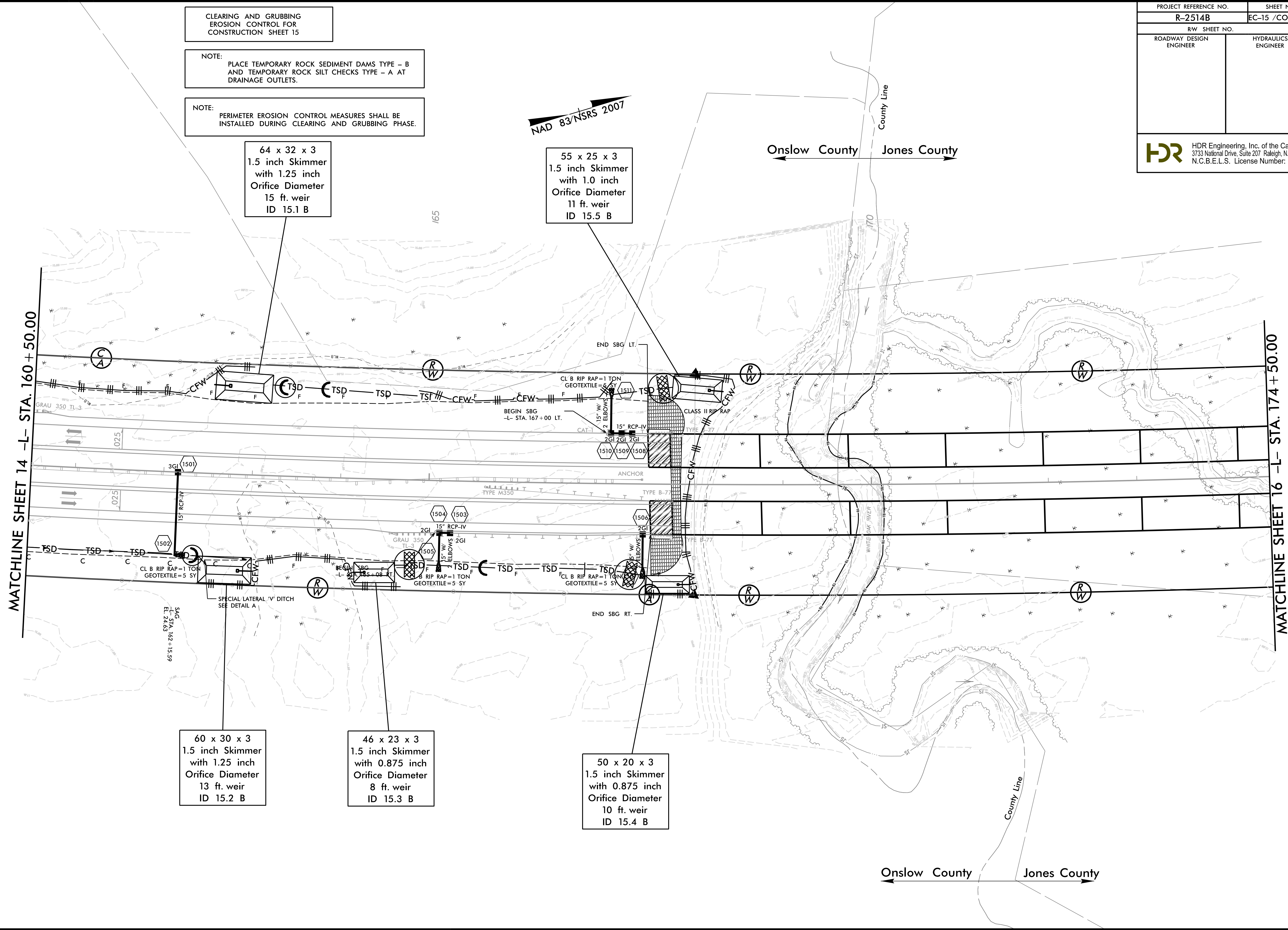


Onslow County Jones County

County Line

County Line

Onslow County Jones County



MATCHLINE SHEET 14 -L- STA. 160 + 50.00

MATCHLINE SHEET 16 -L- STA. 174 + 50.00

REVISIONS

R/W REVISION 9/23/14 GM Revised owner of Parcel 22 to Walter B. Weherington

1/22/2015
R-2514B-EC-CG_PSH.dgn
3:45:15 PM

8/17/99