
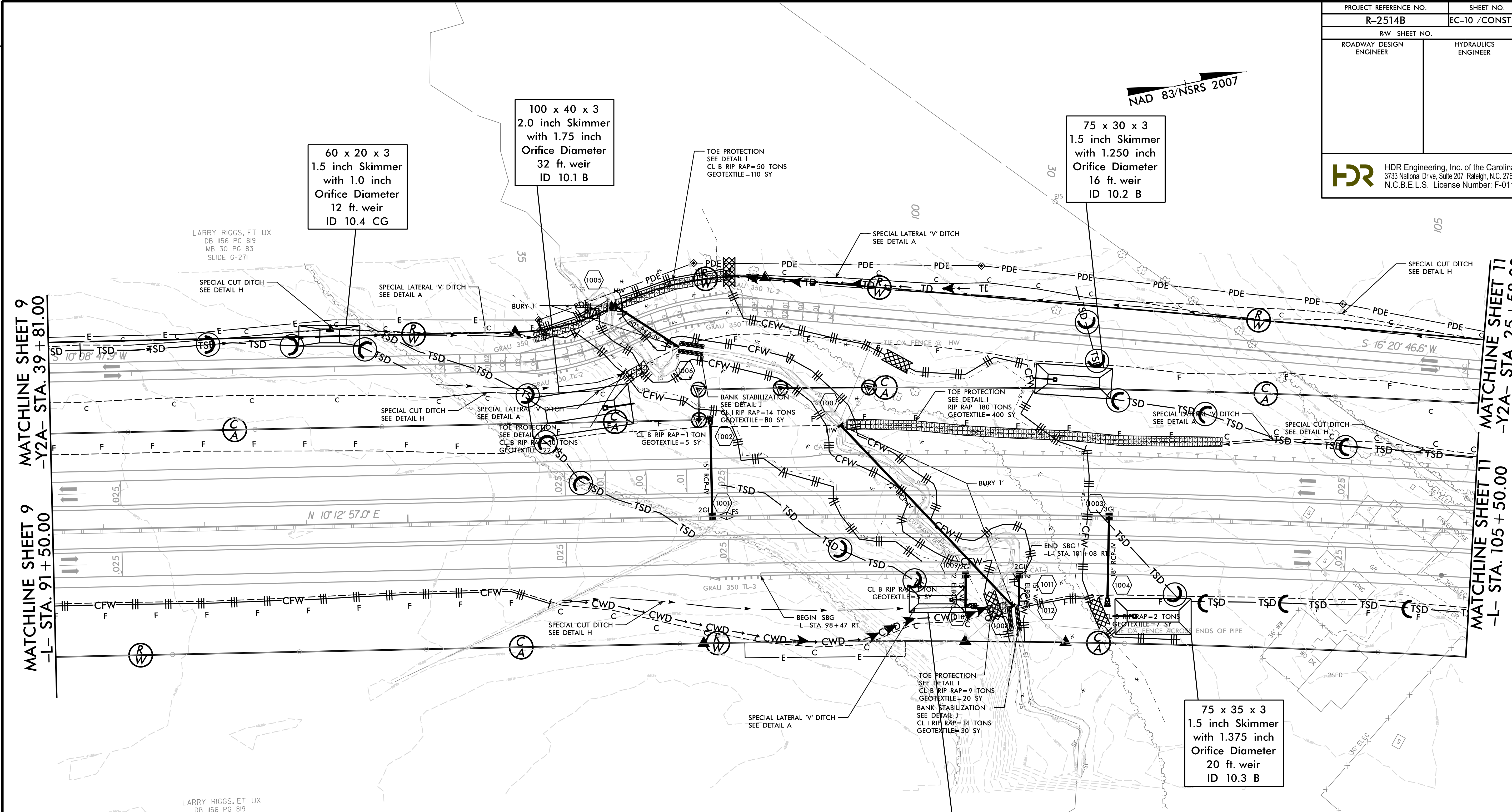


PROJECT REFERENCE NO.	SHEET NO.
R-2514B	EC-10 /CONST.10
RW SHEET NO.	
ROADWAY DESIGN ENGINEER	HYDRAULICS ENGINEER
 HDR Engineering, Inc. of the Carolinas 3733 National Drive, Suite 207 Raleigh, N.C. 27612 N.C.B.E.L.S. License Number: F-0116	

NAD 83/NSRS 2007



MATCHLINE SHEET 9
-Y2A- STA. 39 + 81.00

MATCHLINE SHEET 9
-L- STA. 91 + 50.00

MATCHLINE SHEET 11
-Y2A- STA. 25 + 58.00

MATCHLINE SHEET 11
-L- STA. 105 + 50.00

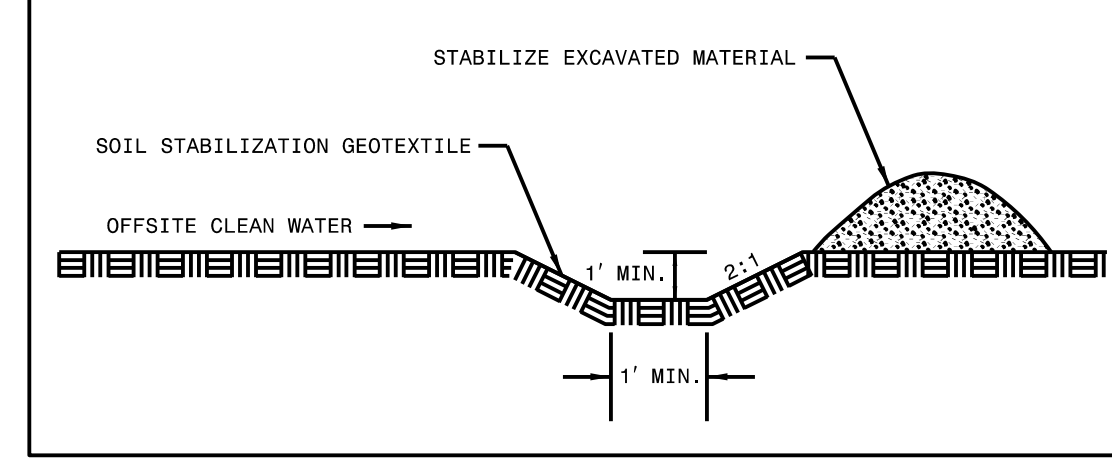
REVISIONS
 R/W Revision 5/11/14 JCL Realigned -Y2A- and Adjusted Proposed R/W, Permanent Drainage and Temporary Construction Easements on Parcels II, 12 and 13.

CLEARING AND GRUBBING
EROSION CONTROL FOR
CONSTRUCTION SHEET 10

NOTE:
PLACE TEMPORARY ROCK SEDIMENT DAMS TYPE - B
AND TEMPORARY ROCK SILT CHECKS TYPE - A AT
DRAINAGE OUTLETS.

NOTE:
PERIMETER EROSION CONTROL MEASURES SHALL BE
INSTALLED DURING CLEARING AND GRUBBING PHASE.

CLEAN WATER DIVERSION
 → CWD → CWD → CWD → CWD →
 (Not to Scale)



75 x 35 x 3
1.5 inch Skimmer
with 1.375 inch
Orifice Diameter
20 ft. weir
ID 10.3 B

62 x 26 x 3
1.5 inch Skimmer
with 1.125 inch
Orifice Diameter
12 ft. weir
ID 10.5 CG

SBG = SHOULDER BERM GUTTER
SEE SHEETS 26-27 FOR -L- PROFILE
SEE SHEETS 33-34 FOR -Y2A- PROFILE
SEE SHEETS C-1 THRU C-? FOR CULVERT PLANS

8/17/99
 1/22/2015
 R-2514B-EC-CG_PSH.dgn