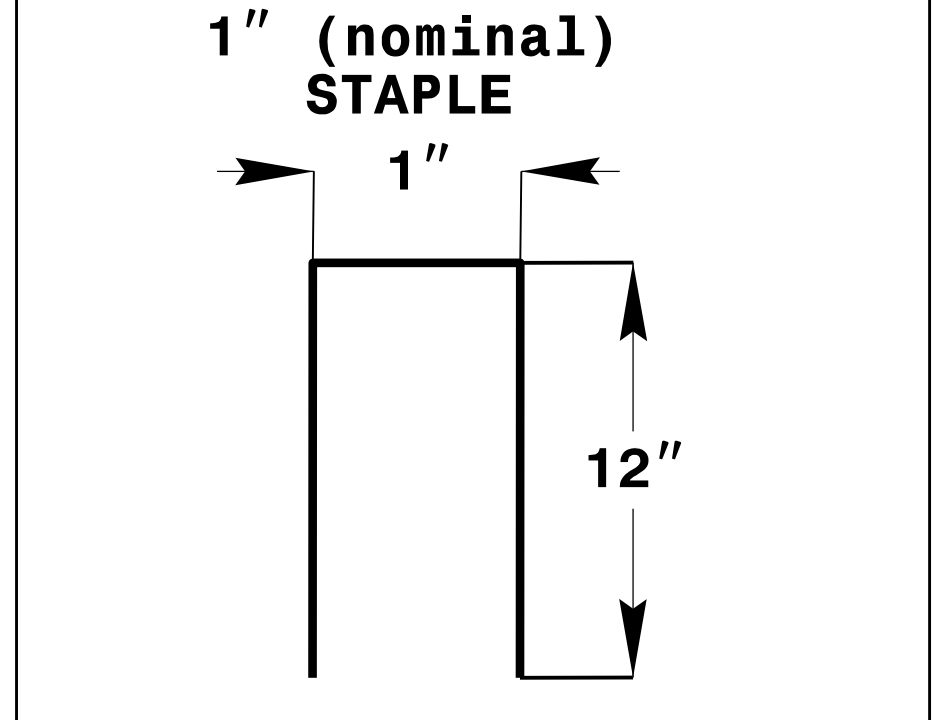
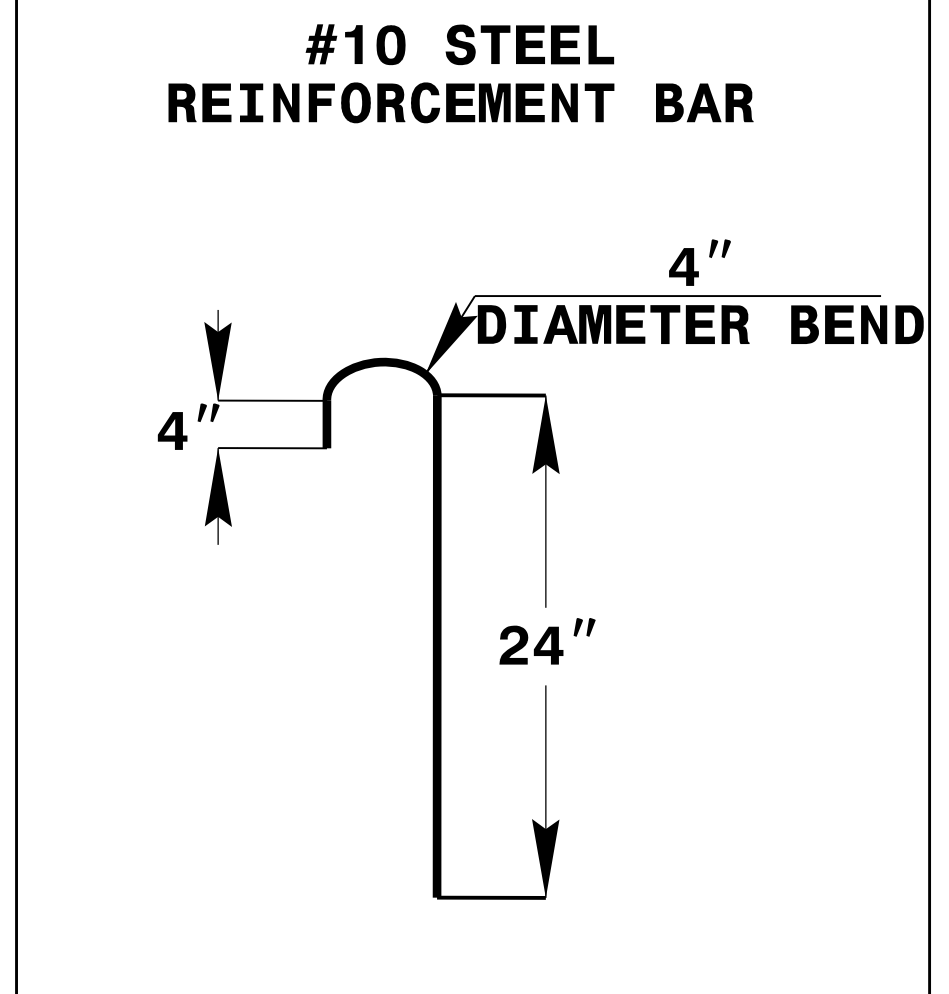
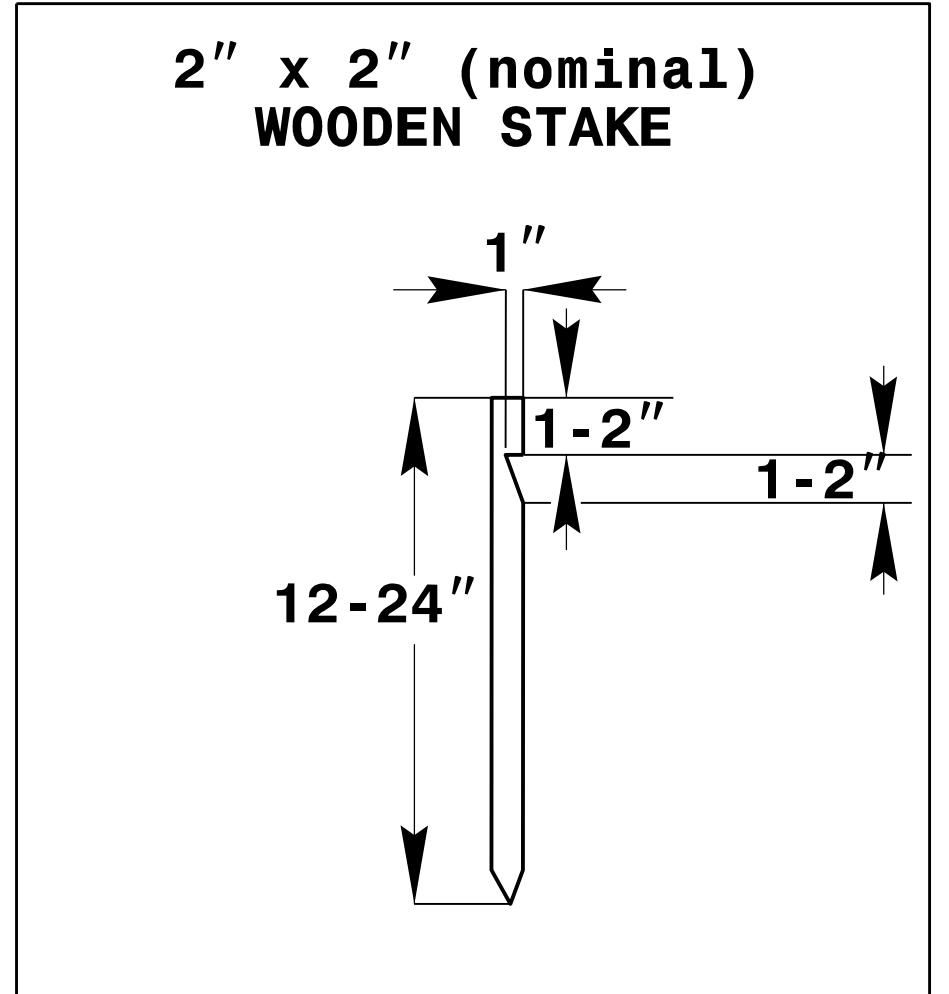
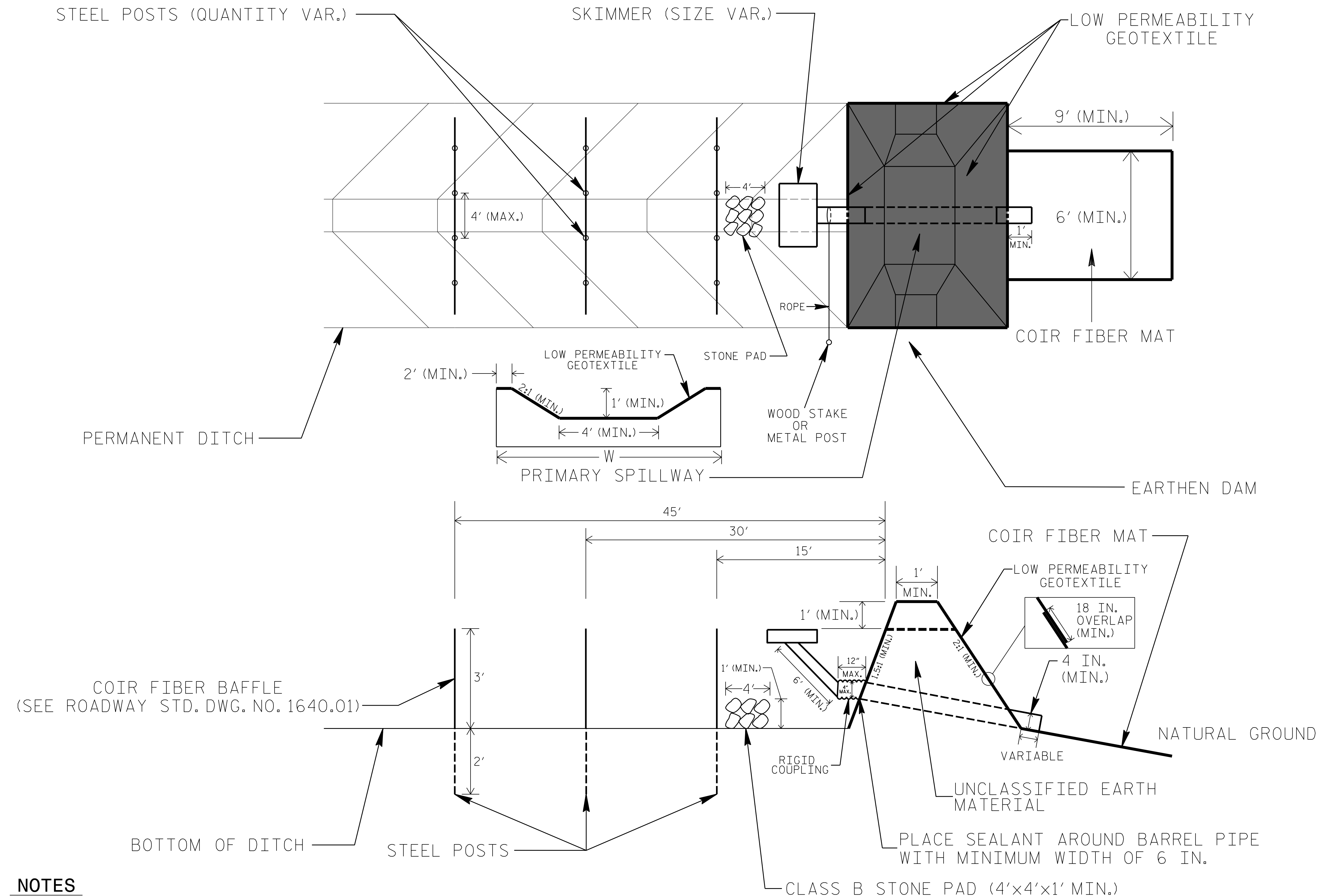


PROJECT REFERENCE NO.	SHEET NO.
R-2514B	EC-2B
RW SHEET NO.	
ROADWAY DESIGN ENGINEER	HYDRAULICS ENGINEER

# EARTHEN DAM WITH SKIMMER DETAIL (EAST)



## COIR FIBER MAT ANCHOR OPTIONS

### NOTES

1. LIMIT EARTHEN DAM HEIGHT TO 5 FT.
2. DETERMINE PRIMARY SPILLWAY LENGTH (FT.) USING  $Q/0.4$ , WHERE Q IS FLOW RATE (CFS) INTO BASIN.
3. LOW PERMEABILITY GEOTEXTILE FOR PRIMARY SPILLWAY SHALL BE ONE CONTINUOUS PIECE OF MATERIAL OR OVERLAPPED 18 IN. (MIN.).

NOT TO SCALE

PLOT DRIVER: NCD001\_pacf\_color\_eng\_50.plt  
 USER: cmysers  
 FILE: North Carolina Dept. of Transportation\Erosion\_Cr+I.R\_2514B\_TO\_3.e\13.00.CAD\Erosion\_Control\NR2514B\_Hyd\_EC.DETAIL.S.dgn  
 PENTABLE: NCD001\_EC.BW.tbl  
 TIME: 3:30:33 PM  
 DATE: 1/22/2015