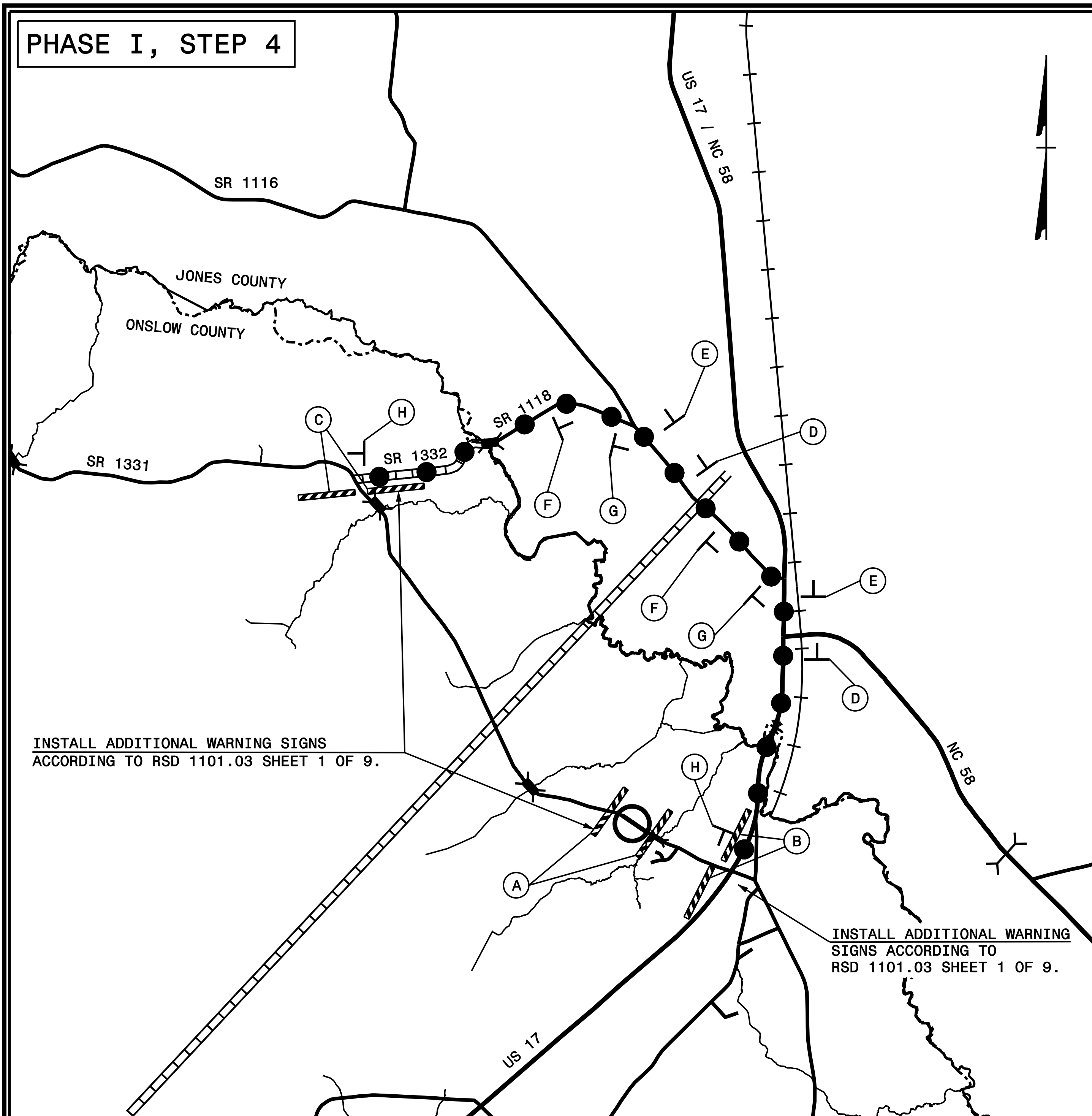


**PHASE I, STEP 4**



SIGN NUMBER: name  
TYPE: STATIONARY  
QUANTITY: SEE PLANS  
SIGN WIDTH: 4'-0"  
HEIGHT: 2'-0"  
TOTAL AREA: 8.0 Sq.Ft.

BACKG COLOR: Fluorescent Orange  
COPY COLOR: Black

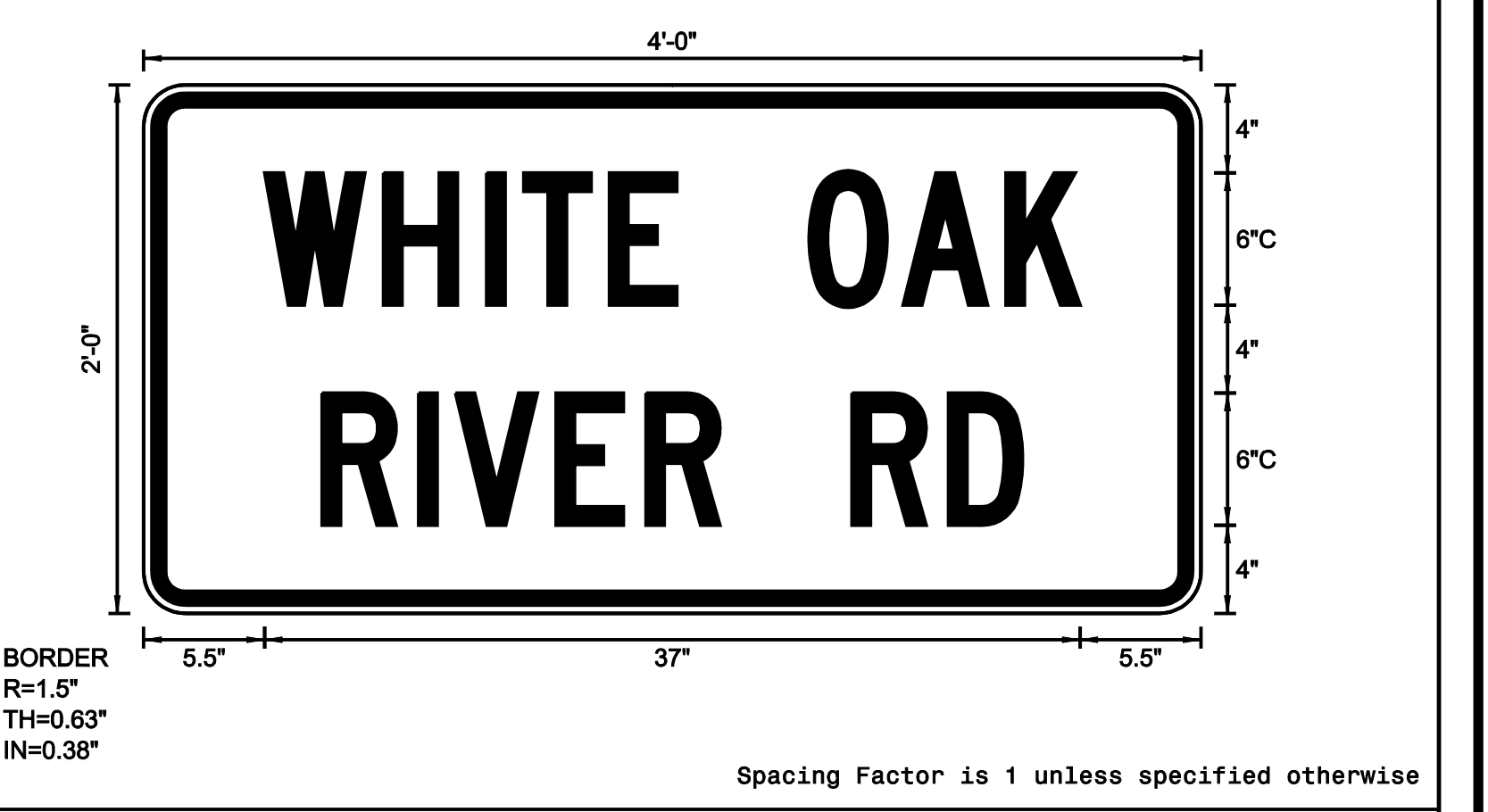
SYMBOL	X	Y	WID	HT

BORDER TYPE: FLUSH  
RECESS: 0.38"  
WIDTH: 0.63"  
RADII: 1.5"

NO. Z BARS:  
LENGTH:

MAT'L: 0.080" (2.0 mm) ALUMINUM

DESIGN BY: none  
PROJECT ID: R-2514B/C  
CHECKED BY:  
DIV: 2/3  
DATE: 4/15/2015



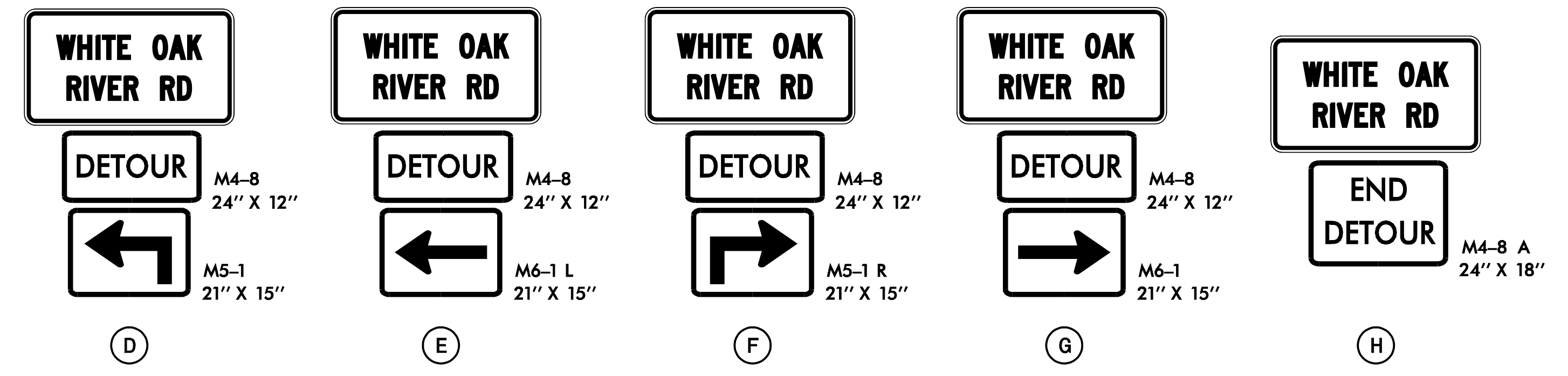
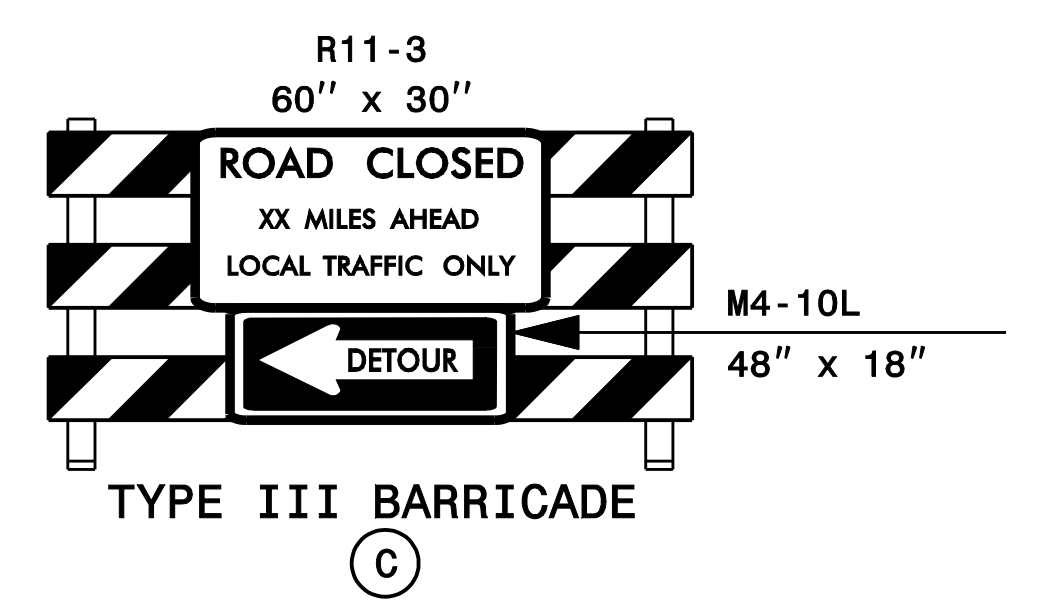
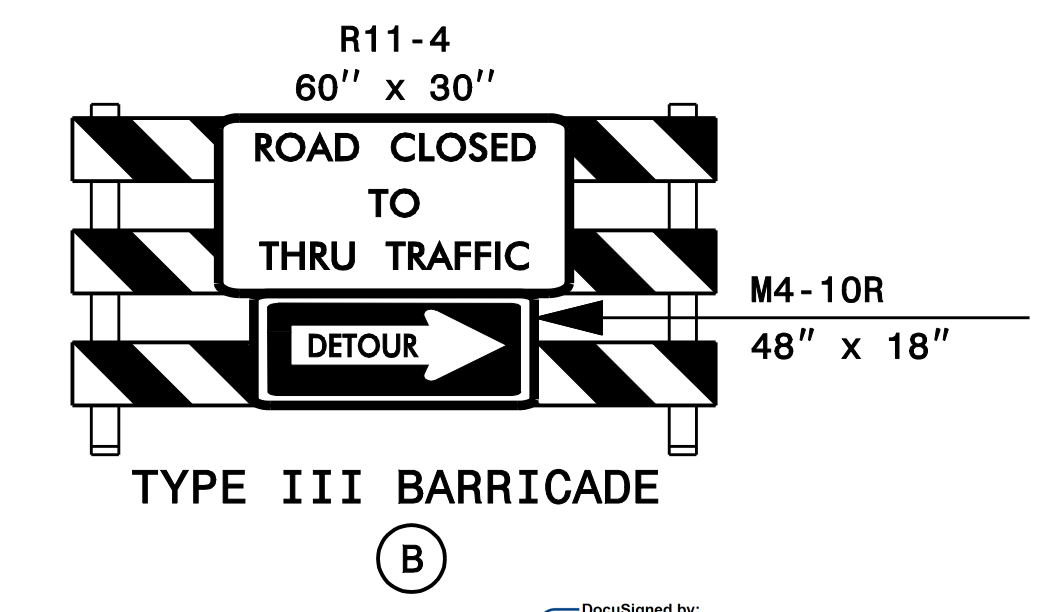
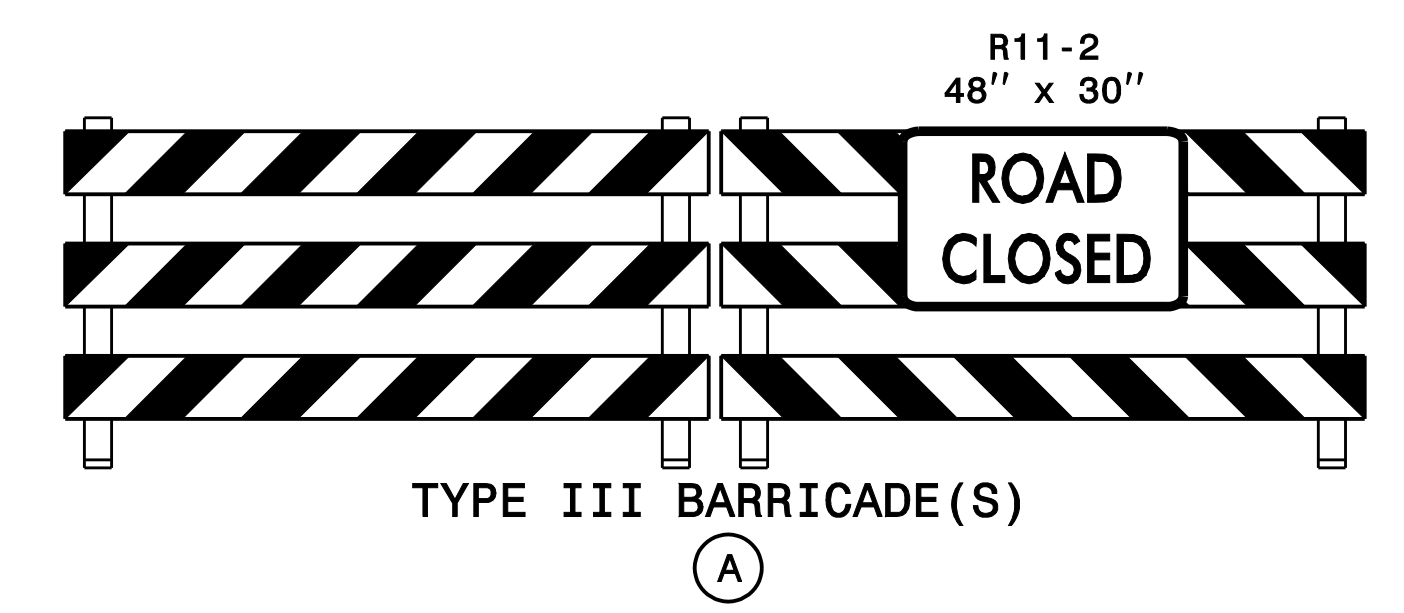
- USE NOTES: 1,2
- Legend and border shall be direct applied black non-reflective sheeting.
  - Background shall be NC Grade B fluorescent orange retroreflective sheeting.

LETTER POSITIONS

Letter spacings are to start of next letter

Letter	W	H	I	T	E	O	A	K	Series/Size	Text Length
W	5.5	5.4	4.7	1.7	3.9	3.1	6	4.3	C 2000	37
R	8.1	4.4	1.7	4.6	4.1	3.4	6	4.4	C 2000	31.8

FILENAME: detour sign designs  
NORTH CAROLINA D.O.T. SIGN DETAIL



PLAN PREPARED IN THE OFFICE OF: <b>PROGRESSIVE DESIGN GROUP, INC.</b> ENGINEERS • CONSULTANTS	APPROVED: [Signature] DATE: 4/15/2015 SEAL NORTH CAROLINA PROFESSIONAL ENGINEER SEAL 025465 TM ARR	DIVISION OF HIGHWAYS DEPARTMENT OF TRANSPORTATION NORTH CAROLINA	TRANSPORTATION MANAGEMENT PLAN OFF SITE DETOUR PLAN -Y2- (WHITE OAK RIVER RD)
---	--	--	---