

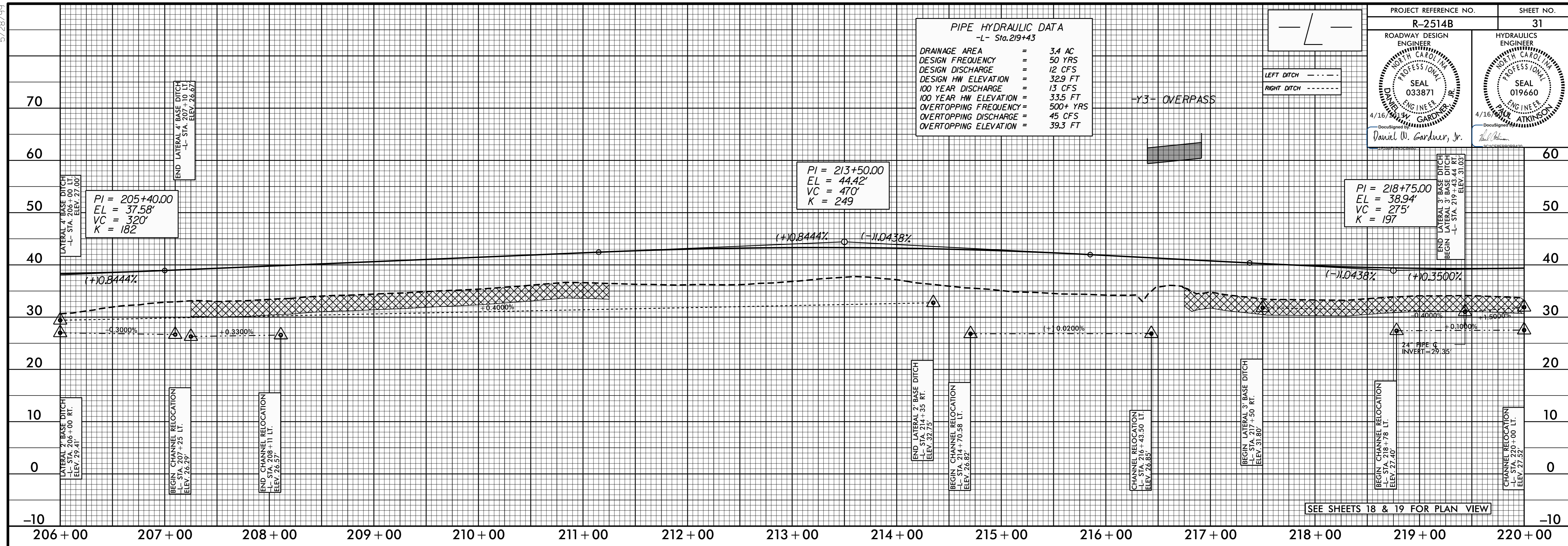
5/28/99

16-APR-2015 14:03 R-2514B\_r.dwg p1\_31.dgn

**PIPE HYDRAULIC DATA**  
-L- Sta. 219+43

DRAINAGE AREA	=	3.4 AC
DESIGN FREQUENCY	=	50 YRS
DESIGN DISCHARGE	=	12 CFS
DESIGN HW ELEVATION	=	32.9 FT
100 YEAR DISCHARGE	=	13 CFS
100 YEAR HW ELEVATION	=	33.5 FT
OVERTOPPING FREQUENCY	=	500+ YRS
OVERTOPPING DISCHARGE	=	45 CFS
OVERTOPPING ELEVATION	=	39.3 FT

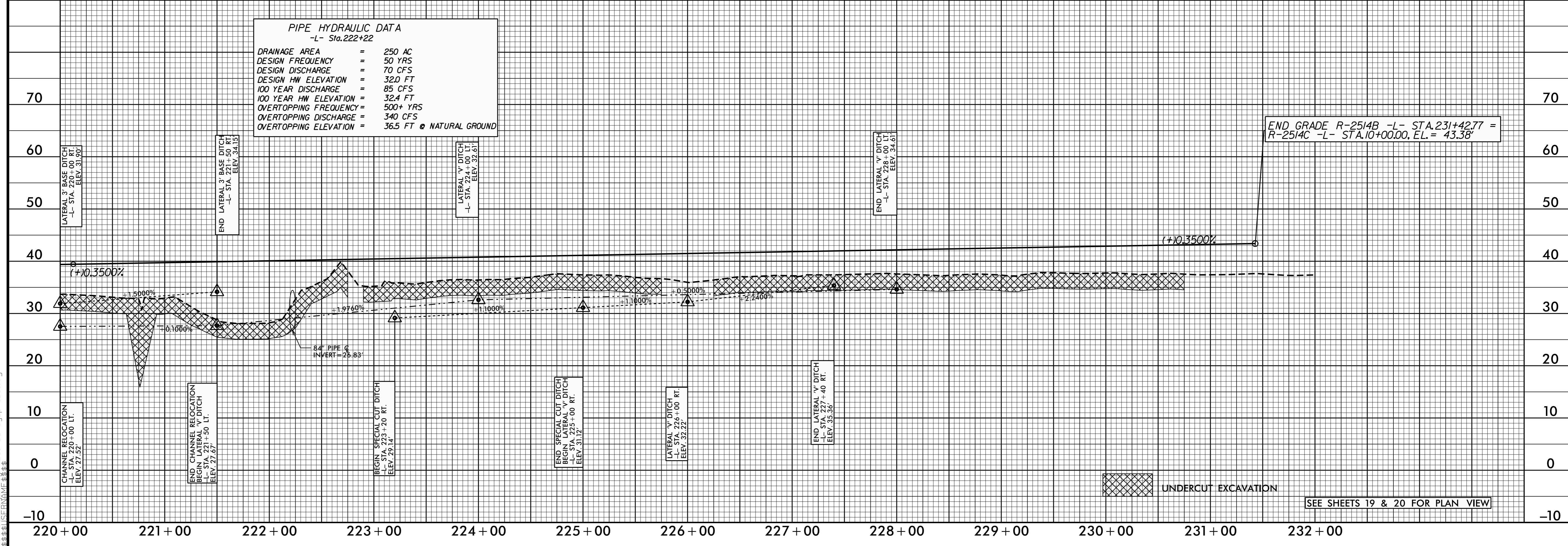
PROJECT REFERENCE NO.	R-2514B	SHEET NO.	31
ROADWAY DESIGN ENGINEER	DAVID W. GARDNER, JR.	HYDRAULICS ENGINEER	DAVID W. GARDNER, JR.
SEAL	033871	SEAL	019660
DATE	4/16/99	DATE	4/16/99



**PIPE HYDRAULIC DATA**  
-L- Sta. 222+22

DRAINAGE AREA	=	250 AC
DESIGN FREQUENCY	=	50 YRS
DESIGN DISCHARGE	=	70 CFS
DESIGN HW ELEVATION	=	32.0 FT
100 YEAR DISCHARGE	=	85 CFS
100 YEAR HW ELEVATION	=	32.4 FT
OVERTOPPING FREQUENCY	=	500+ YRS
OVERTOPPING DISCHARGE	=	340 CFS
OVERTOPPING ELEVATION	=	36.5 FT @ NATURAL GROUND

END GRADE R-2514B -L- STA. 231+42.77 = R-2514C -L- STA. 10+00.00, EL. = 43.38'



SEE SHEETS 19 & 20 FOR PLAN VIEW