

04/28/15

See Sheet 1A For Index of Sheets
See Sheet 1B For Conventional Symbols

STATE OF NORTH CAROLINA
DIVISION OF HIGHWAYS

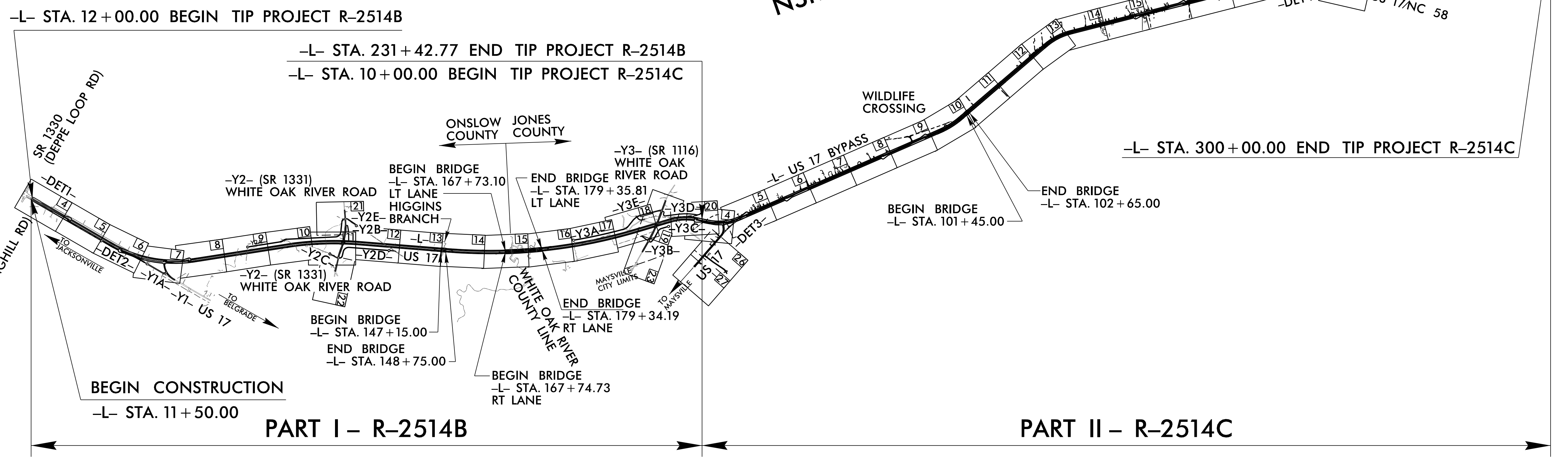
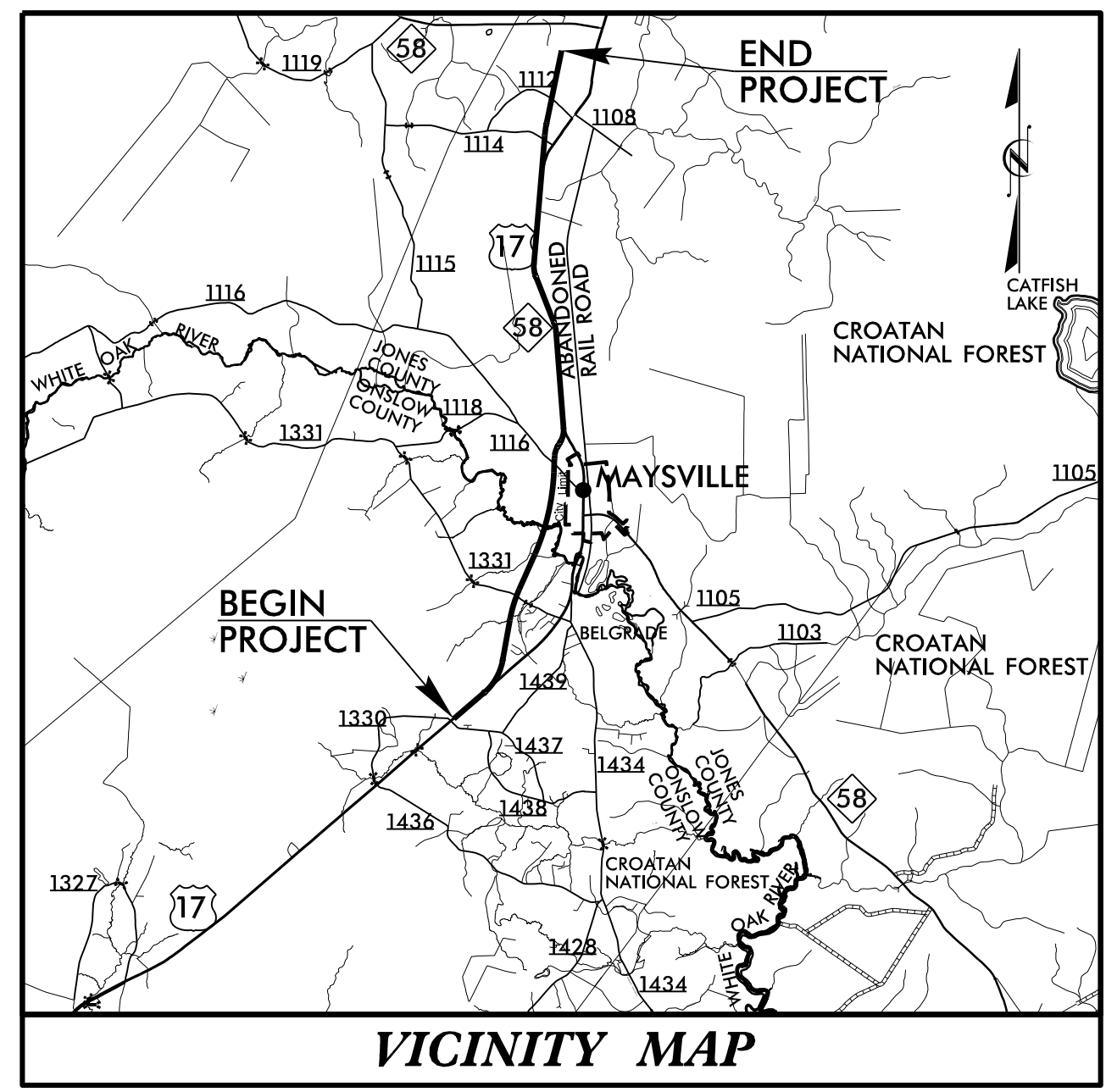
STATE	STATE PROJECT REFERENCE NO.	SHEET NO.	TOTAL SHEETS
N.C.	R-2514B /R-2514C	1	
STATE PROJ. NO.	F.A. PROJ. NO.	DESCRIPTION	
34442.1.3		PE (R-2514B)	
34442.2.S3		ROW (R-2514B)	
34442.3.SU3		UTIL (R-2514B)	
34442.3.S4		CONST. (R-2514B)	
34442.1.4		PE (R-2514C)	
34442.2.4		ROW (R-2514C)	
34442.2.SU4		UTIL (R-2514C)	
34442.3.S4		CONST. (R-2514C)	

ONSLOW & JONES COUNTIES

LOCATION: US 17 FROM SOUTH OF BELGRADE TO NORTH OF MAYSVILLE TO SOUTH OF NC 58 NEAR POLLOCKSVILLE

TYPE OF WORK: GRADING, DRAINAGE, PAVING, AND STRUCTURES

CONTRACT: C203591 TIP PROJECTS: R-2514B /R-2514C



THIS IS A FULL CONTROLLED-ACCESS PROJECT WITH ACCESS AS SHOWN ON PLANS. (R-2514B)
THIS IS A PARTIAL CONTROLLED-ACCESS PROJECT WITH ACCESS BEING AT DESIGNATED POINTS ONLY. (R-2514C)

PROJECT LENGTH	
LENGTH ROADWAY OF TIP PROJECT R-2514B	= 3.906 MILES
LENGTH STRUCTURE OF TIP PROJECT R-2514B	= 0.250 MILES
TOTAL LENGTH OF TIP PROJECT R-2514B	= 4.156 MILES
NOTE: -L- NBL USED TO DETERMINE LENGTH OF PROJECT	
LENGTH ROADWAY OF TIP PROJECT R-2514C	= 5.469 MILES
LENGTH STRUCTURE OF TIP PROJECT R-2514C	= 0.023 MILES
TOTAL LENGTH OF TIP PROJECT R-2514C	= 5.492 MILES
NOTE: -L- NBL USED TO DETERMINE LENGTH OF PROJECT	
LENGTH ROADWAY OF TIP PROJECT R-2514B /R-2514C	= 9.375 MILES
LENGTH STRUCTURE OF TIP PROJECT R-2514B /R-2514C	= 0.273 MILES
TOTAL LENGTH OF TIP PROJECT R-2514B /R-2514C	= 9.648 MILES

Prepared in the Office of:
DIVISION OF HIGHWAYS
1000 Birch Ridge Dr., Raleigh NC, 27610

2012 STANDARD SPECIFICATIONS	RIGHT OF WAY DATE (R-2514B):	RIGHT OF WAY DATE (R-2514C):	LETTING DATE:
	DECEMBER 17, 2013	JUNE 20, 2013	JUNE 16, 2015

JAMES A. SPEER, PE
PROJECT ENGINEER

DANIEL W. GARDNER, JR., PE
PROJECT DESIGN ENGINEER

HYDRAULICS ENGINEER

4/15/2015
DocuSigned by:
Paul Atkinson
SIGNATURE:

PAUL ATKINSON
P.E.

ROADWAY DESIGN ENGINEER

4/15/2015
DocuSigned by:
Daniel W. Gardner, Jr.
SIGNATURE:

DANIEL W. GARDNER, JR.
P.E.

3/30/2015 P:\8522-0\N\Cadd\R2514BC\R2514BC.Rdy_+sh.dgn gmodlin