

END BENT 1
(INTEGRAL)

BENT 1
DIMENSIONS AND PILES FOR FOOTINGS ARE TYPICAL.
BRACE PILES SHALL BE BATTERED 1 1/2:12.

END BENT 2
(INTEGRAL)

FOUNDATION LAYOUT

NOTES

ALL DIMENSIONS LOCATING PILES ARE TO PILE CENTERLINE AT THE BOTTOM OF THE END BENT CAP OR BENT FOOTING.

FOR PILES, SEE SECTION 450 OF THE STANDARD SPECIFICATIONS.

PILES AT END BENT 1 AND END BENT 2 ARE DESIGNED FOR A FACTORED RESISTANCE OF 100 TONS PER PILE.

DRIVE PILES AT END BENT 1 AND END BENT 2 TO A REQUIRED DRIVING RESISTANCE OF 170 TONS PER PILE.

PILES AT BENT 1 ARE DESIGNED FOR A FACTORED RESISTANCE OF 140 TONS PER PILE.

DRIVE PILES AT BENT 1 TO A REQUIRED DRIVING RESISTANCE OF 230 TONS PER PILE.

IT HAS BEEN ESTIMATED THAT A HAMMER WITH AN EQUIVALENT RATED ENERGY IN THE RANGE OF 40 TO 55 FT-KIPS PER BLOW WILL BE REQUIRED TO DRIVE PILES AT END BENT 1, BENT 1 AND END BENT 2. THIS ESTIMATED ENERGY RANGE DOES NOT RELEASE THE CONTRACTOR FROM PROVIDING DRIVING EQUIPMENT IN ACCORDANCE WITH SUBARTICLE 450-3(D)(2) OF THE STANDARD SPECIFICATIONS.

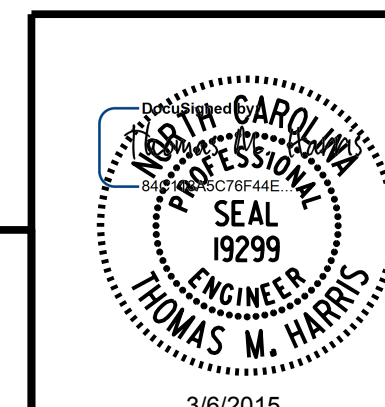
TESTING PILES WITH THE PILE DRIVING ANALYZER (PDA) DURING DRIVING, RESTRIKING OR REDRIVING MAY BE REQUIRED. THE ENGINEER WILL DETERMINE THE NEED FOR PDA TESTING. FOR PDA TESTING, SEE SECTION 450 OF THE STANDARD SPECIFICATIONS.

PROJECT NO. U-2524BC
GUILFORD COUNTY
STATION: 27+40.75 -L-

SHEET 2 OF 3

STATE OF NORTH CAROLINA
DEPARTMENT OF TRANSPORTATION
RALEIGH

GENERAL DRAWING
BRIDGE OVER SR 2085 (-L-) ON SR 2140 (-Y-) BETWEEN SR 2136 AND SR 2137



PLANS PREPARED BY :
PARSONS
5540 CenterView Drive, Suite 217
Raleigh, NC 27606-3386
NC LICENSE No. F-0246
FOR NORTH CAROLINA DEPARTMENT OF TRANSPORTATION

DRAWN BY : K. E. LOFTON DATE : 12-14
CHECKED BY : T. M. HARRIS DATE : 1-15
DESIGN ENGINEER : T. M. HARRIS DATE : 2-15

REVISIONS						SHEET No.
No.	BY:	DATE:	No.	BY:	DATE:	TOTAL SHEETS
1			3			27
2			4			27