

PROJECT REFERENCE NO.	SHEET NO.
U-2524BC	EC-II/CONST. 6
RW SHEET NO.	

**-RPCA-**

PIs Sta 11+33.40  
 $\Theta_s = 5^\circ 43' 46.5''$   
 $L_s = 200.00'$   
 $LT = 133.40'$   
 $ST = 66.73'$

PI Sta 14+18.41  
 $\Delta = 24^\circ 38' 27.6''$  (LT)  
 $D = 5^\circ 43' 46.5''$   
 $L = 430.07'$   
 $T = 218.41'$   
 $R = 1,000.00'$   
 $S.E. = 0.08$

PIs Sta 16+96.80  
 $\Theta_s = 5^\circ 43' 46.5''$   
 $L_s = 200.00'$   
 $LT = 133.40'$   
 $ST = 66.73'$

PI Sta 23+36.22  
 $\Delta = 9^\circ 01' 24.9''$  (RT)  
 $D = 3^\circ 10' 27.4''$   
 $L = 284.27'$   
 $T = 142.43'$   
 $R = 1,805.00'$   
 $S.E. = 0.03$

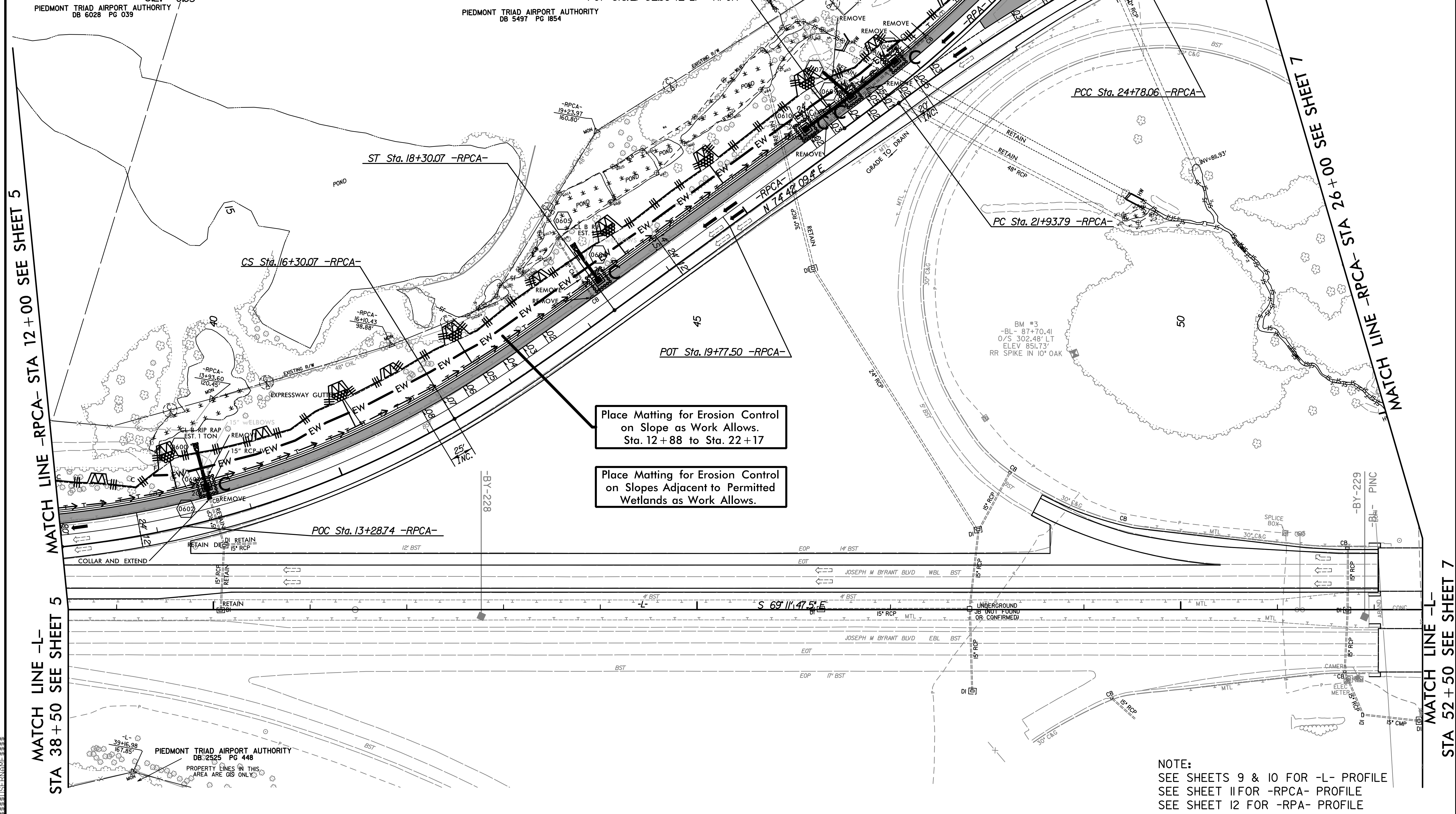
**-RPA-**

PI Sta 11+62.59  
 $\Delta = 13^\circ 26' 21.6''$  (LT)  
 $D = 4^\circ 09' 06.7''$   
 $L = 323.69'$   
 $T = 162.59'$   
 $R = 1,380.00'$   
 $S.E. = 0.055$

PI Sta 14+15.69  
 $\Delta = 5^\circ 50' 06.8''$  (LT)  
 $D = 3^\circ 10' 27.4''$   
 $L = 183.83'$   
 $T = 91.99'$   
 $R = 1,805.00'$   
 $S.E. = EXIST.$

**PCC Sta. 13+23.69 -RPA-**

END EXPRESSWAY GUTTER  
 END CONSTRUCTION  
 END RESURFACING  
 POC Sta. 13+20 -RPA-  
 MATCH EXIST. P/MT.  
 SLOPE & ELEV.



MATCH LINE -RPCA- STA 12+00 SEE SHEET 5

MATCH LINE -L- STA 38+50 SEE SHEET 5

MATCH LINE -RPCA- STA 26+00 SEE SHEET 7

MATCH LINE -L- STA 52+50 SEE SHEET 7

NOTE:  
 SEE SHEETS 9 & 10 FOR -L- PROFILE  
 SEE SHEET 11 FOR -RPCA- PROFILE  
 SEE SHEET 12 FOR -RPA- PROFILE

5/14/99