

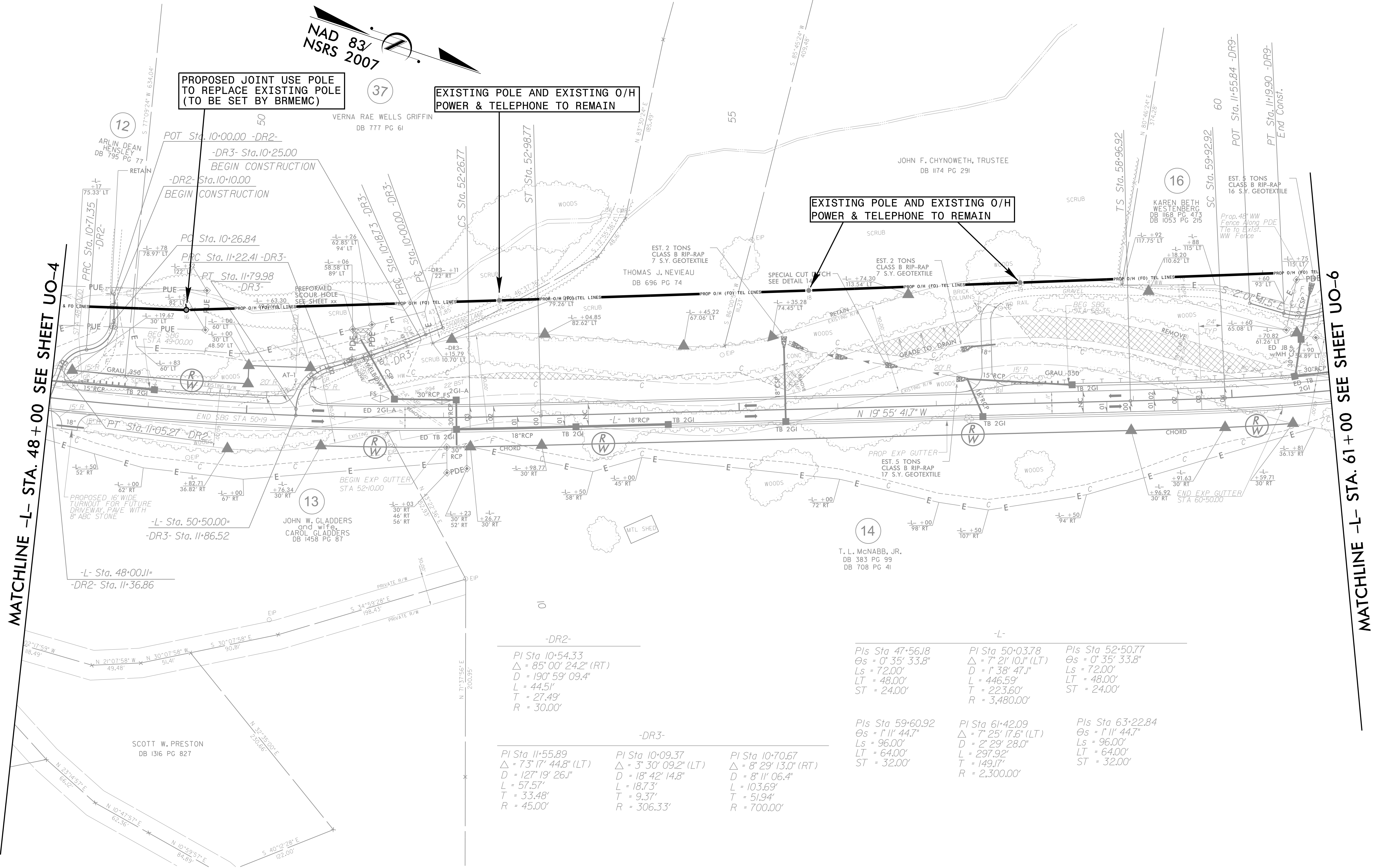
UTILITIES BY OTHERS

NOTE:
ALL PROPOSED UTILITY WORK
SHOWN ON THIS SHEET WILL
BE DONE BY OTHERS

Charlotte, North Carolina 704-361-8488
Tri-Cities, Tennessee 423-467-8401
Knoxville, Tennessee 865-546-5800
Middlesboro, Kentucky 606-249-6000
Spartanburg, South Carolina 864-574-4775

Asheville, North Carolina 828-253-2796

Copyright © 1994 Vaughn & Melton, Inc. All Rights Reserved.



MATCHLINE -L- STA. 48+00 SEE SHEET UO-4

MATCHLINE -L- STA. 61+00 SEE SHEET UO-6

-DR2-		-L-			
PI Sta 10+54.33	PI Sta 47+56.18	PI Sta 50+03.78	PI Sta 52+50.77		
$\Delta = 85^{\circ}00'24.2''$ (RT)	$\Delta = 0^{\circ}35'33.8''$	$\Delta = 7^{\circ}21'10.1''$ (LT)	$\Delta = 0^{\circ}35'33.8''$		
D = 190'59'09.4"	Ls = 72.00'	D = 1'38'47.1"	Ls = 72.00'		
L = 44.51'	LT = 48.00'	L = 446.59'	LT = 48.00'		
T = 27.49'	ST = 24.00'	T = 223.60'	ST = 24.00'		
R = 30.00'		R = 3,480.00'			
-DR3-					
PI Sta 11+55.89	PI Sta 10+09.37	PI Sta 10+70.67	PI Sta 59+60.92	PI Sta 61+42.09	PI Sta 63+22.84
$\Delta = 73^{\circ}17'44.8''$ (LT)	$\Delta = 3^{\circ}30'09.2''$ (LT)	$\Delta = 8^{\circ}29'13.0''$ (RT)	$\Delta = 7^{\circ}25'17.6''$ (LT)	$\Delta = 8^{\circ}11'44.7''$	$\Delta = 1^{\circ}11'44.7''$
D = 127'19'26.1"	D = 18'42'14.8"	D = 8'11'06.4"	D = 2'29'28.0"	D = 2'29'28.0"	D = 2'29'28.0"
L = 57.57'	L = 18.73'	L = 103.69'	L = 297.92'	L = 297.92'	L = 64.00'
T = 33.48'	T = 9.37'	T = 51.94'	T = 149.17'	T = 149.17'	T = 64.00'
R = 45.00'	R = 306.33'	R = 700.00'	R = 2,300.00'	R = 2,300.00'	R = 32.00'

REVISIONS

8/17/99

\$\$\$\$\$SYTIME\$\$\$\$\$
\$\$\$\$\$SERNAME\$\$\$\$\$