

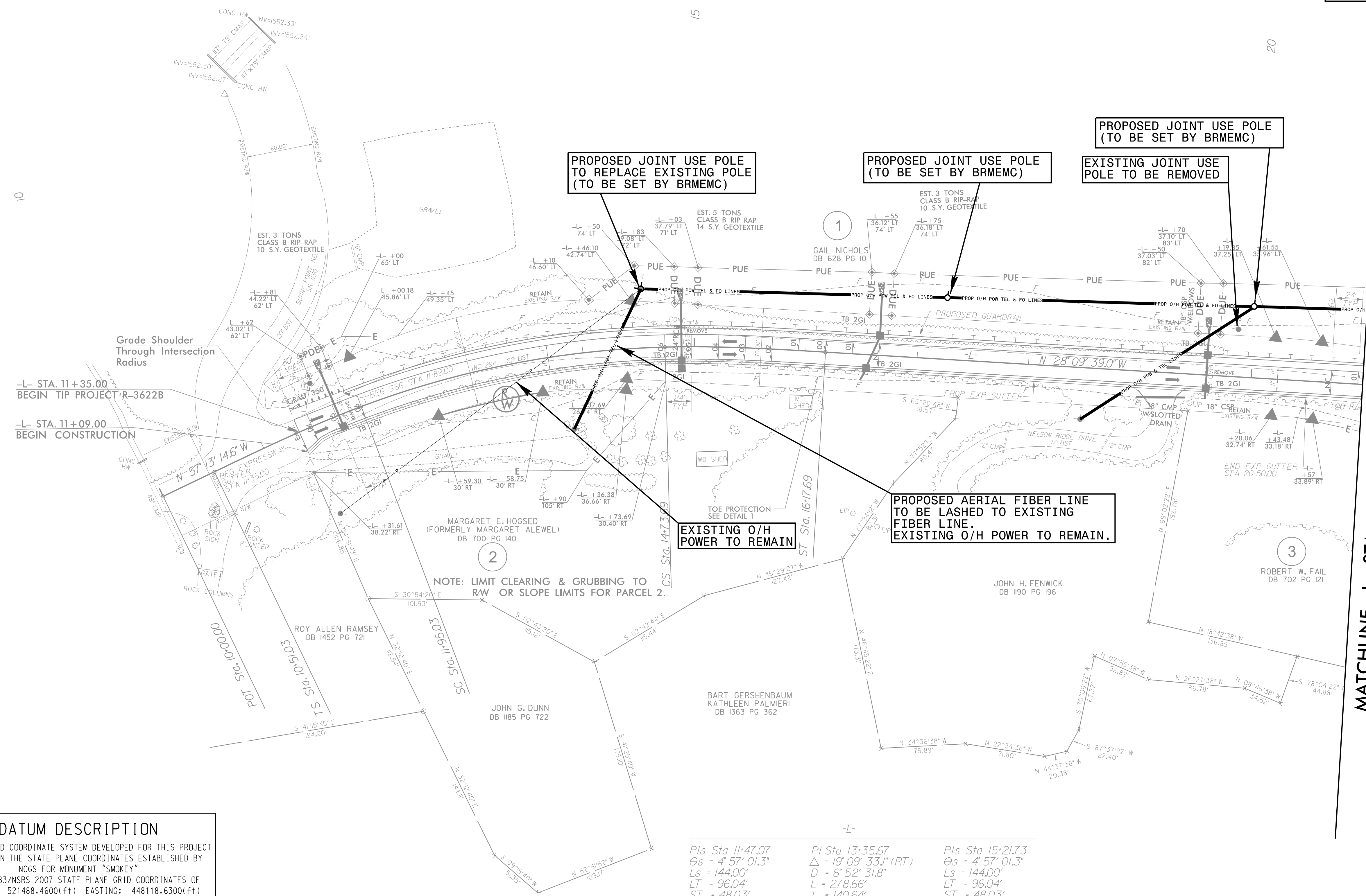
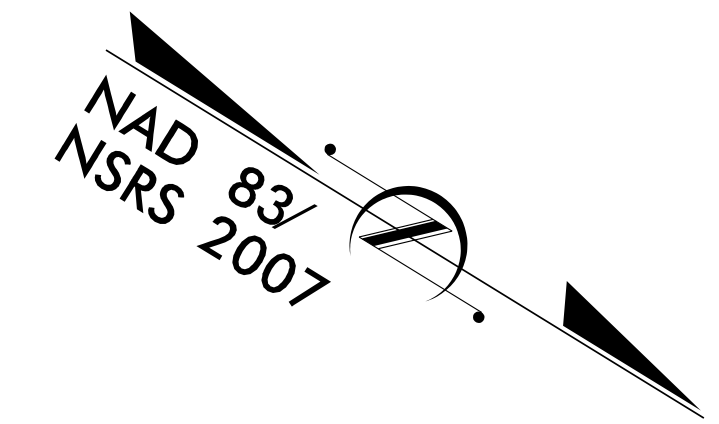
UTILITIES BY OTHERS

NOTE:  
ALL PROPOSED UTILITY WORK  
SHOWN ON THIS SHEET WILL  
BE DONE BY OTHERS

**V&M**  
Vaughn & Melton  
Consulting Engineers

Charlotte, North Carolina 704-357-0488  
Tri-Cities, Tennessee 423-467-8401  
Knoxville, Tennessee 606-748-6600  
Middlesboro, Kentucky 606-248-6600  
Asheville, North Carolina 828-253-2796  
Spartanburg, South Carolina 864-574-4775

Copyright © 1994 Vaughn & Melton, Inc. All Rights Reserved



**DATUM DESCRIPTION**

THE LOCALIZED COORDINATE SYSTEM DEVELOPED FOR THIS PROJECT IS BASED ON THE STATE PLANE COORDINATES ESTABLISHED BY NCGS FOR MONUMENT "SMOKEY"

WITH NAD 83/NSRS 2007 STATE PLANE GRID COORDINATES OF NORTHING: 521488.4600(ft) EASTING: 448118.6300(ft) ELEVATION: 1807.451(ft)

THE AVERAGE COMBINED GRID FACTOR USED ON THIS PROJECT (GROUND TO GRID) IS: 0.99979974

THE N.C. LAMBERT GRID BEARING AND LOCALIZED HORIZONTAL GROUND DISTANCE FROM "SMOKEY" TO -L- STATION 10+00.00 IS  
S 20°05'53" E 5725.99'

ALL LINEAR DIMENSIONS ARE LOCALIZED HORIZONTAL DISTANCES  
VERTICAL DATUM USED IS NAVD 88

<p>PI Sta 11+47.07  <math>\Delta s = 4^{\circ} 57' 01.3''</math>  <math>Ls = 144.00'</math>  <math>LT = 96.04'</math>  <math>ST = 48.03'</math></p>	<p>PI Sta 13+35.67  <math>\Delta = 19^{\circ} 09' 33.1'' (RT)</math>  <math>D = 6^{\circ} 52' 31.8''</math>  <math>L = 278.66'</math>  <math>T = 140.64'</math>  <math>R = 833.33'</math></p>	<p>PI Sta 15+21.73  <math>\Delta s = 4^{\circ} 57' 01.3''</math>  <math>Ls = 144.00'</math>  <math>LT = 96.04'</math>  <math>ST = 48.03'</math></p>
---	---	---

MATCHLINE -L- STA. 21+00 SEE SHEET UO-3

REVISIONS

8/17/99

\$\$\$\$\$SYTIME\$\$\$\$\$  
\$\$\$\$\$SERNAME\$\$\$\$\$