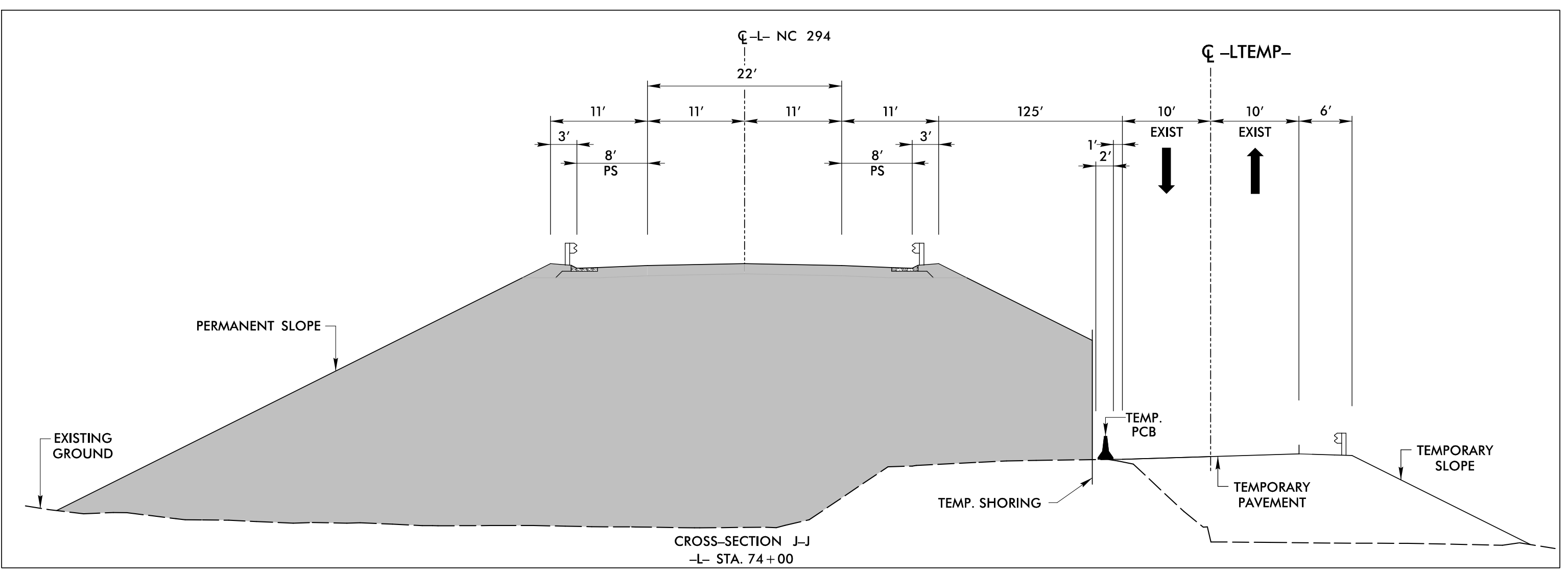
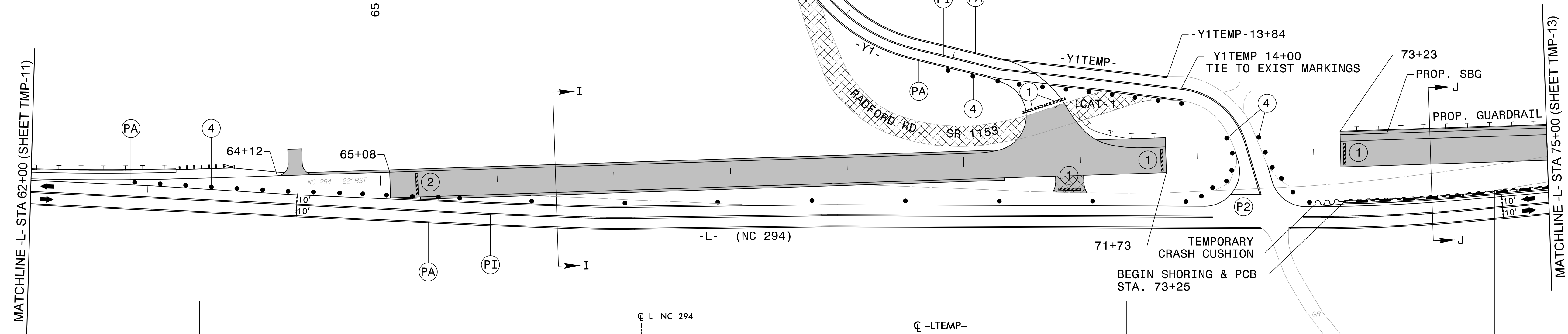


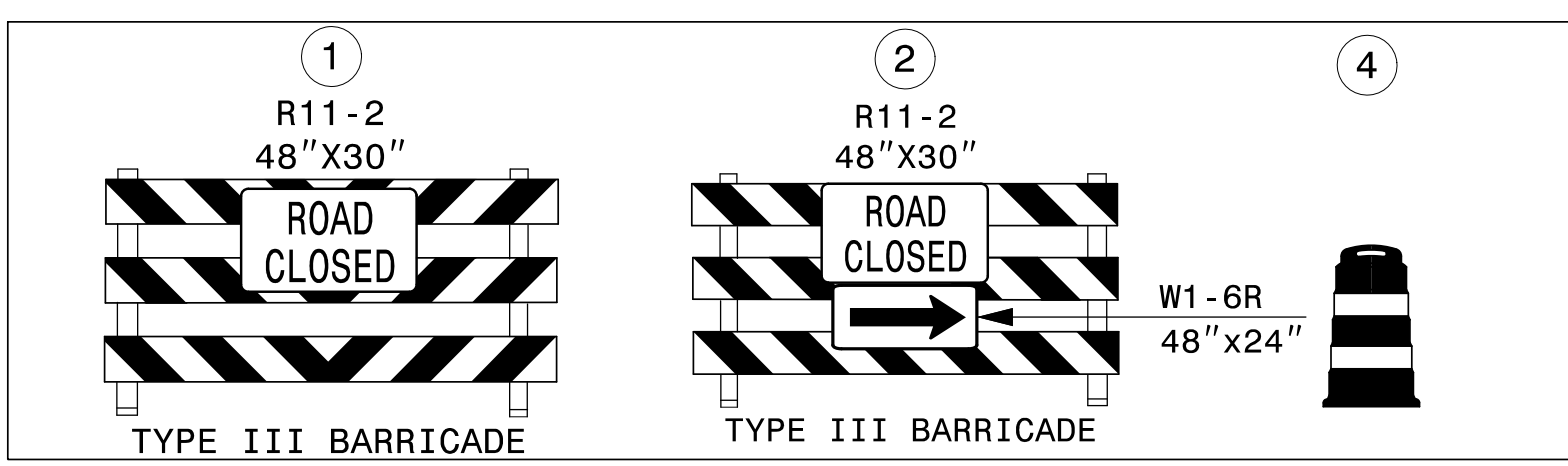
BEGIN CONSTRUCTION
-Y1- STA. 10+00.00

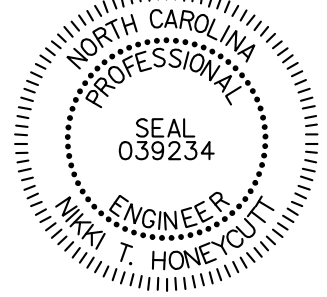


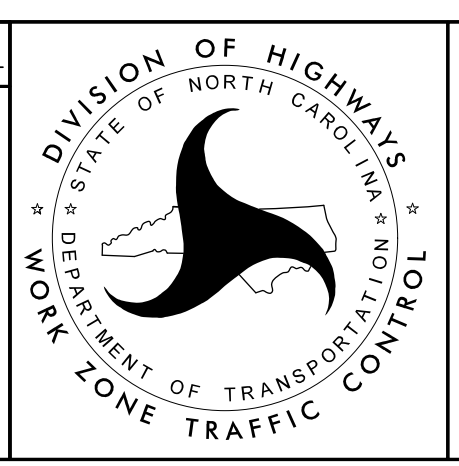
2 QUANTITY = 7,680 SF
 TEMPORARY SHORING
 FROM STA. 73+25, 41' RT
 TO STA. 77+50, 17' RT
 (SEE SHEET TMP-2A FOR
 TEMPORARY SHORING DATA)

* NOTE: ALL STATIONS AND DIMENSIONS SHOWN +/-

SCALE 1" = 50'



APPROVED:  DATE: 4/10/2015



TEMPORARY TRAFFIC CONTROL
PHASE II DETAIL

4/9/2015 R:\Traffic\TrafficControl\NCPAR3622B_TC_TMP_12.dgn