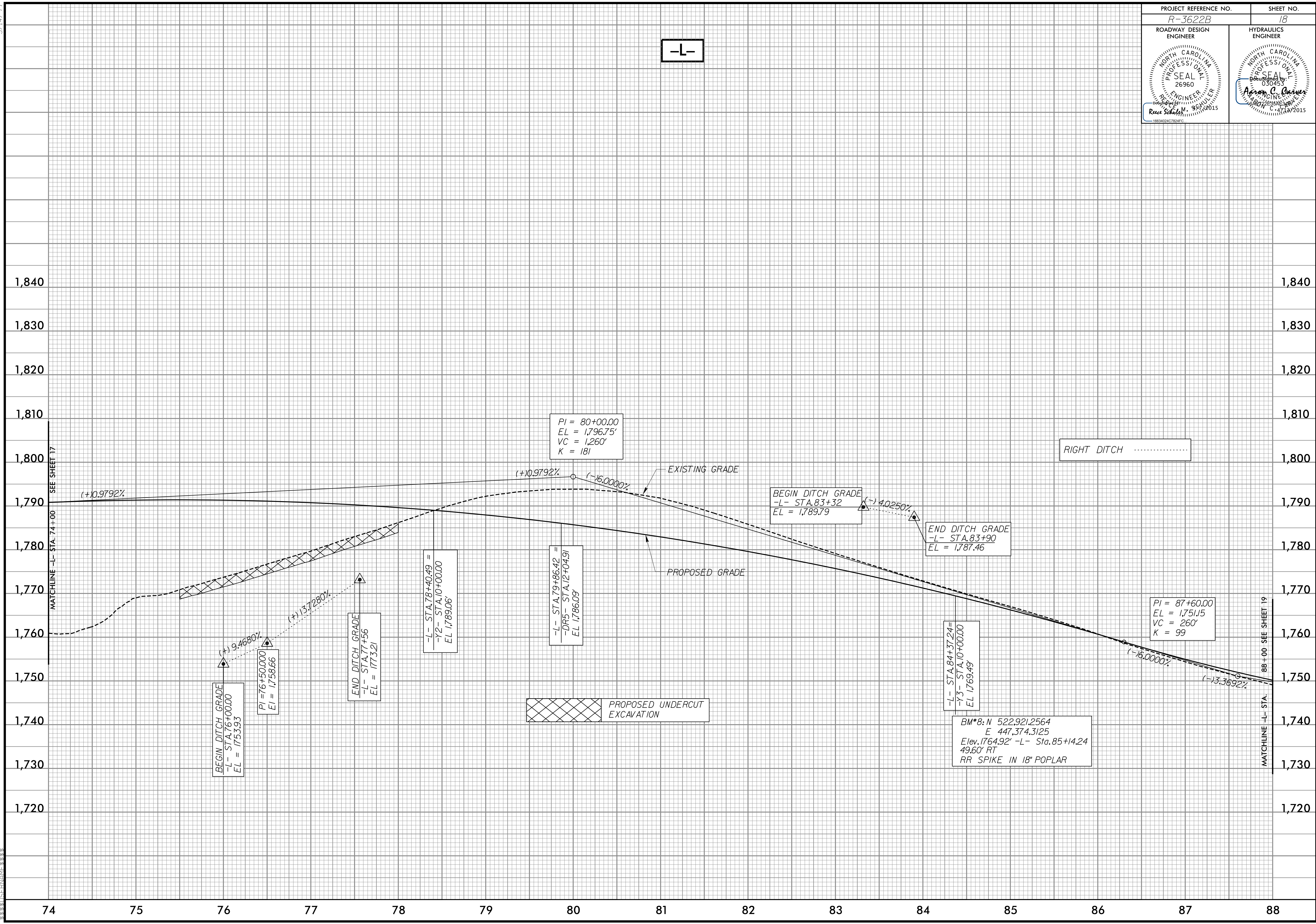


5/14/99

PROJECT REFERENCE NO. <i>R-3622B</i>	SHEET NO. <i>18</i>
ROADWAY DESIGN ENGINEER	HYDRAULICS ENGINEER

**-L-**



SEE SHEET 17  
MATCHLINE -L- STA. 74+00

88+00 SEE SHEET 19  
MATCHLINE -L- STA.

RIGHT DITCH

PROPOSED UNDERCUT  
EXCAVATION

PI = 80+00.00  
EL = 1,796.75'  
VC = 1,260'  
K = 181

BEGIN DITCH GRADE  
-L- STA. 83+32  
EL = 1,789.79

END DITCH GRADE  
-L- STA. 83+90  
EL = 1,787.46

PI = 87+60.00  
EL = 1,751.15  
VC = 260'  
K = 99

-L- STA. 84+37.24 =  
-Y3- STA. 10+00.00  
EL 1,769.49

BM#8: N 522,921.2564  
E 447,374.3125  
Elev. 1,764.92' -L- Sta. 85+14.24  
49.60' RT  
RR SPIKE IN 18" POPLAR

BEGIN DITCH GRADE  
-L- STA. 76+00.00  
EL = 1,753.93

PI = 76+50.000  
EL = 1,758.66

END DITCH GRADE  
-L- STA. 77+56  
EL = 1,773.21

-L- STA. 78+40.49 =  
-Y2- STA. 10+00.00  
EL 1,789.06

-L- STA. 79+86.42 =  
-DR5- STA. 12+04.91  
EL 1,786.09

1,840  
1,830  
1,820  
1,810  
1,800  
1,790  
1,780  
1,770  
1,760  
1,750  
1,740  
1,730  
1,720

1,840  
1,830  
1,820  
1,810  
1,800  
1,790  
1,780  
1,770  
1,760  
1,750  
1,740  
1,730  
1,720

74 75 76 77 78 79 80 81 82 83 84 85 86 87 88