

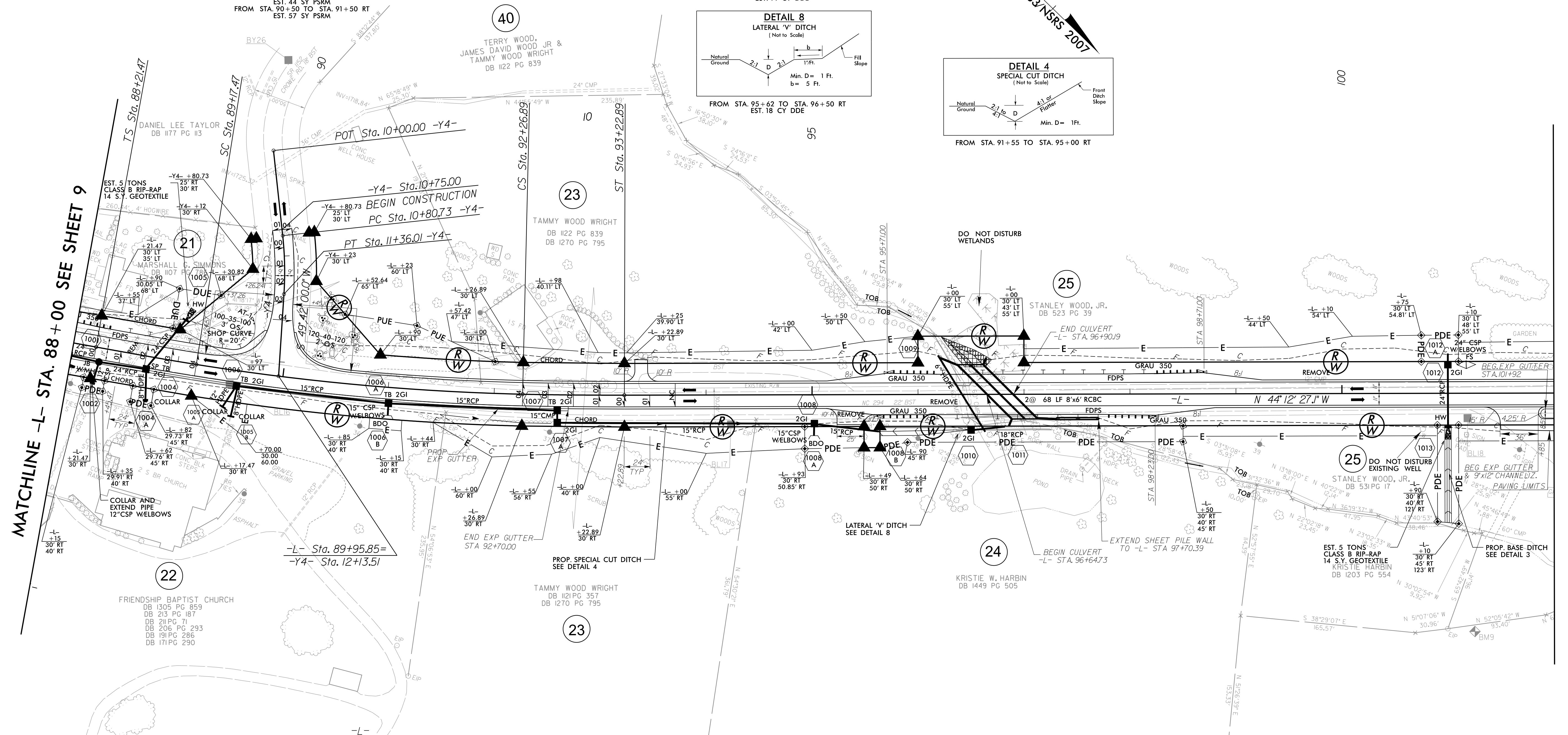
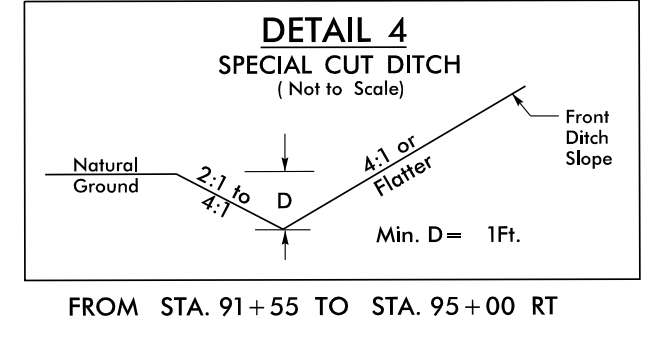
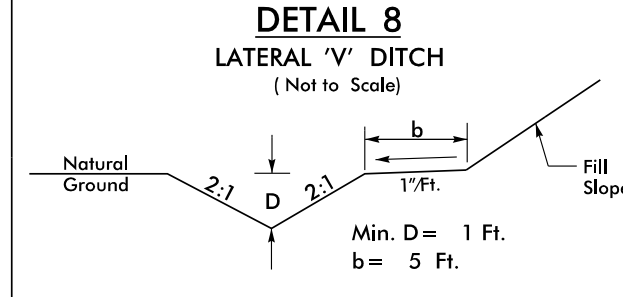
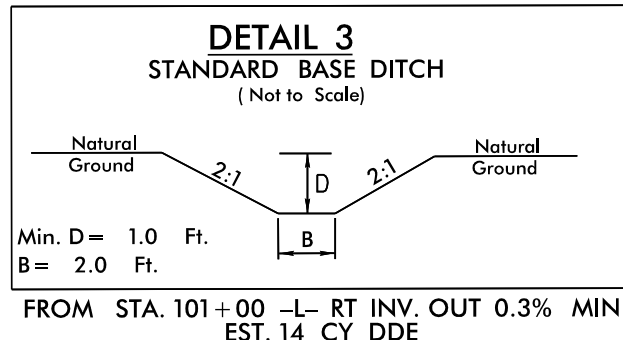
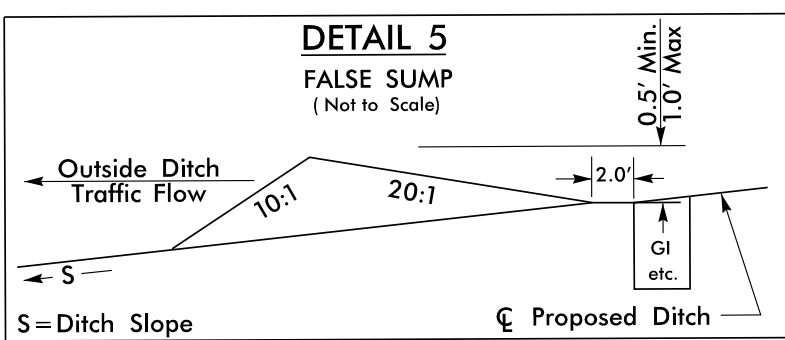
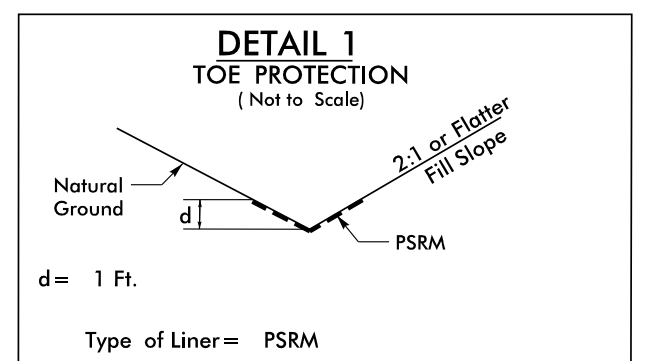
**V&M**  
**Vaughn & Melton**  
 Consulting Engineers

Charlotte, North Carolina 104-351-0488  
 Tri-Cities, Tennessee 423-467-8401  
 Knoxville, Tennessee 865-546-5800  
 Middlesboro, Kentucky 606-248-5600  
 Spartanburg, South Carolina 864-574-4775

Asheville, North Carolina  
 828-253-2796

Copyright © 1994 Vaughn & Melton, Inc.  
 All Rights Reserved

PROJECT REFERENCE NO. R-3622B	SHEET NO. 10
ROADWAY DESIGN ENGINEER	HYDRAULICS ENGINEER



MATCHLINE -L- STA. 88+00 SEE SHEET 9

MATCHLINE -L- STA. 102+00 SEE SHEET 11

PIs Sta 88+85.47 Δs = 1' 11" 44.7" Ls = 96.00' LT = 64.00' ST = 32.00'	PI Sta 90+72.41 Δs = 7' 42" 28.8" (LT) D = 2' 29" 28.0" L = 309.42' T = 154.94' R = 2,300.00'	PIs Sta 92+58.89 Δs = 1' 11" 44.7" Ls = 96.00' LT = 64.00' ST = 32.00'
--	--	--

-Y4-

PI Sta 11+08.44 Δs = 9' 57" 00.0" (RT) D = 18' 00" 00.0" L = 55.28' T = 27.71' R = 318.31'
---

NOTE: USE ROD & LUG CONNECTORS W/SLEEVE GASKETS AT ALL ELBOWS

SEE SHEETS S-1 THRU S-17 FOR CULVERT PLANS  
 SEE SHEET 19 FOR -L- PROFILE  
 SEE SHEET 22 FOR -Y4- PROFILE

REVISIONS

8/17/99