

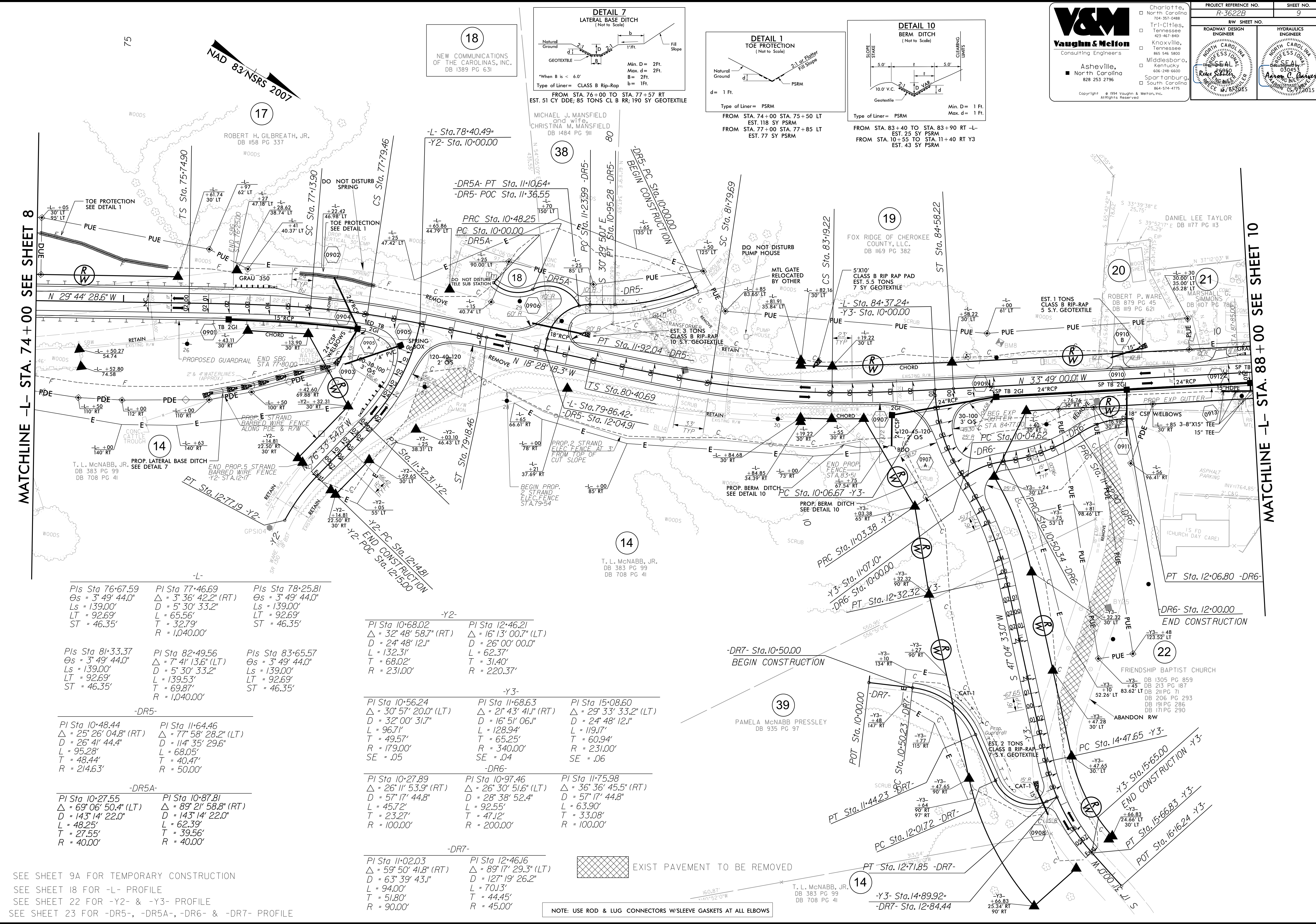
8/17/99

V&M
Vaughn & Melton
Consulting Engineers

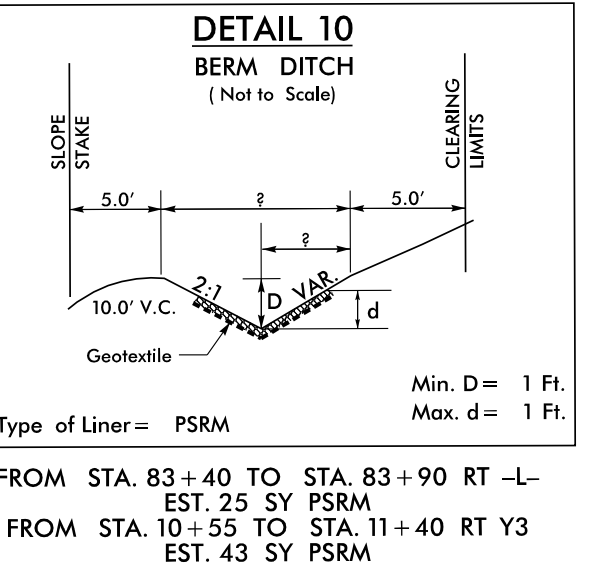
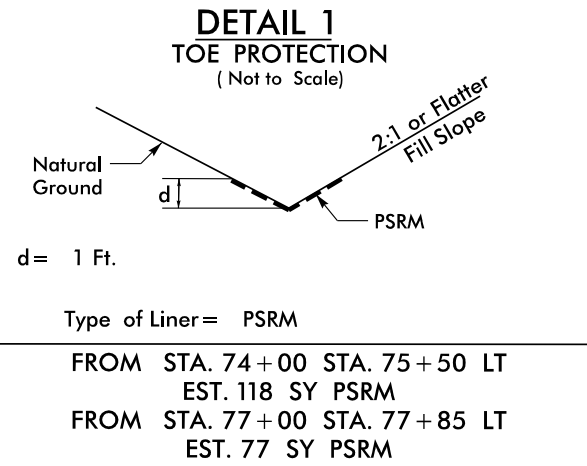
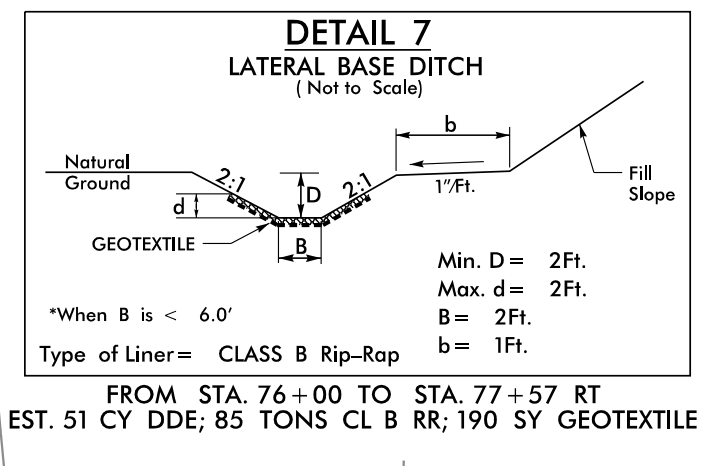
Asheville, North Carolina
828 253 2796

Copyright © 1994 Vaughn & Melton, Inc.
All Rights Reserved

PROJECT REFERENCE NO.	R-3622B
SHEET NO.	9
ROADWAY DESIGN ENGINEER	ROBERT H. GILBREATH, JR.
HYDRAULICS ENGINEER	DANIEL LEE TAYLOR



18
NEW COMMUNICATIONS OF THE CAROLINAS, INC.
DB 1389 PG 631



MATCHLINE -L- STA. 74+00 SEE SHEET 8

MATCHLINE -L- STA. 88+00 SEE SHEET 10

-L- Pls Sta 76+67.59 Os = 3° 49' 44.0" Ls = 139.00' LT = 92.69' ST = 46.35' Pls Sta 81+33.37 Os = 3° 49' 44.0" Ls = 139.00' LT = 92.69' ST = 46.35' -DR5- Pls Sta 10+48.44 Δ = 25° 26' 04.8" (RT) D = 26° 41' 44.4" L = 95.28' T = 48.44' R = 214.63' Pls Sta 11+64.46 Δ = 77° 58' 28.2" (LT) D = 143° 14' 22.0" L = 68.05' T = 40.47' R = 50.00' -DR5A- Pls Sta 10+27.55 Δ = 69° 06' 50.4" (LT) D = 143° 14' 22.0" L = 48.25' T = 27.55' R = 40.00' Pls Sta 11+07.10 Δ = 89° 21' 58.8" (RT) D = 89° 21' 58.8" (RT) L = 62.39' T = 39.56' R = 40.00'	-Y2- Pls Sta 10+68.02 Δ = 32° 48' 58.7" (RT) D = 24° 48' 12.1" L = 132.31' T = 68.02' R = 231.00' Pls Sta 12+46.21 Δ = 16° 13' 00.7" (LT) D = 26° 00' 00.0" L = 62.37' T = 31.40' R = 220.37' -Y3- Pls Sta 10+56.24 Δ = 30° 57' 20.0" (LT) D = 32° 00' 31.7" L = 96.71' T = 49.57' R = 179.00' SE = .05 Pls Sta 11+68.63 Δ = 21° 43' 41.1" (RT) D = 16° 51' 06.1" L = 128.94' T = 65.25' R = 340.00' SE = .04 Pls Sta 15+08.60 Δ = 29° 33' 33.2" (LT) D = 24° 48' 12.1" L = 119.17' T = 60.94' R = 231.00' SE = .06 -DR6- Pls Sta 10+27.89 Δ = 26° 11' 53.9" (RT) D = 57° 17' 44.8" L = 45.72' T = 23.27' R = 100.00' Pls Sta 10+97.46 Δ = 28° 38' 52.4" D = 28° 38' 52.4" L = 92.55' T = 47.12' R = 200.00' Pls Sta 11+75.98 Δ = 36° 36' 45.5" (RT) D = 57° 17' 44.8" L = 63.90' T = 33.08' R = 100.00'
---	--

-DR7- Pls Sta 11+02.03 Δ = 59° 50' 41.8" (RT) D = 63° 39' 43.1" L = 94.00' T = 51.80' R = 90.00' Pls Sta 12+46.16 Δ = 89° 17' 29.3" (LT) D = 127° 19' 26.2" L = 70.33' T = 44.45' R = 45.00'	-DR6- Pls Sta 12+06.80 END CONSTRUCTION Pls Sta 12+00.00 END CONSTRUCTION
---	--

EXIST PAVEMENT TO BE REMOVED

NOTE: USE ROD & LUG CONNECTORS W/SLEEVE GASKETS AT ALL ELBOWS

SEE SHEET 9A FOR TEMPORARY CONSTRUCTION
 SEE SHEET 18 FOR -L- PROFILE
 SEE SHEET 22 FOR -Y2- & -Y3- PROFILE
 SEE SHEET 23 FOR -DR5-, -DR5A-, -DR6- & -DR7- PROFILE