

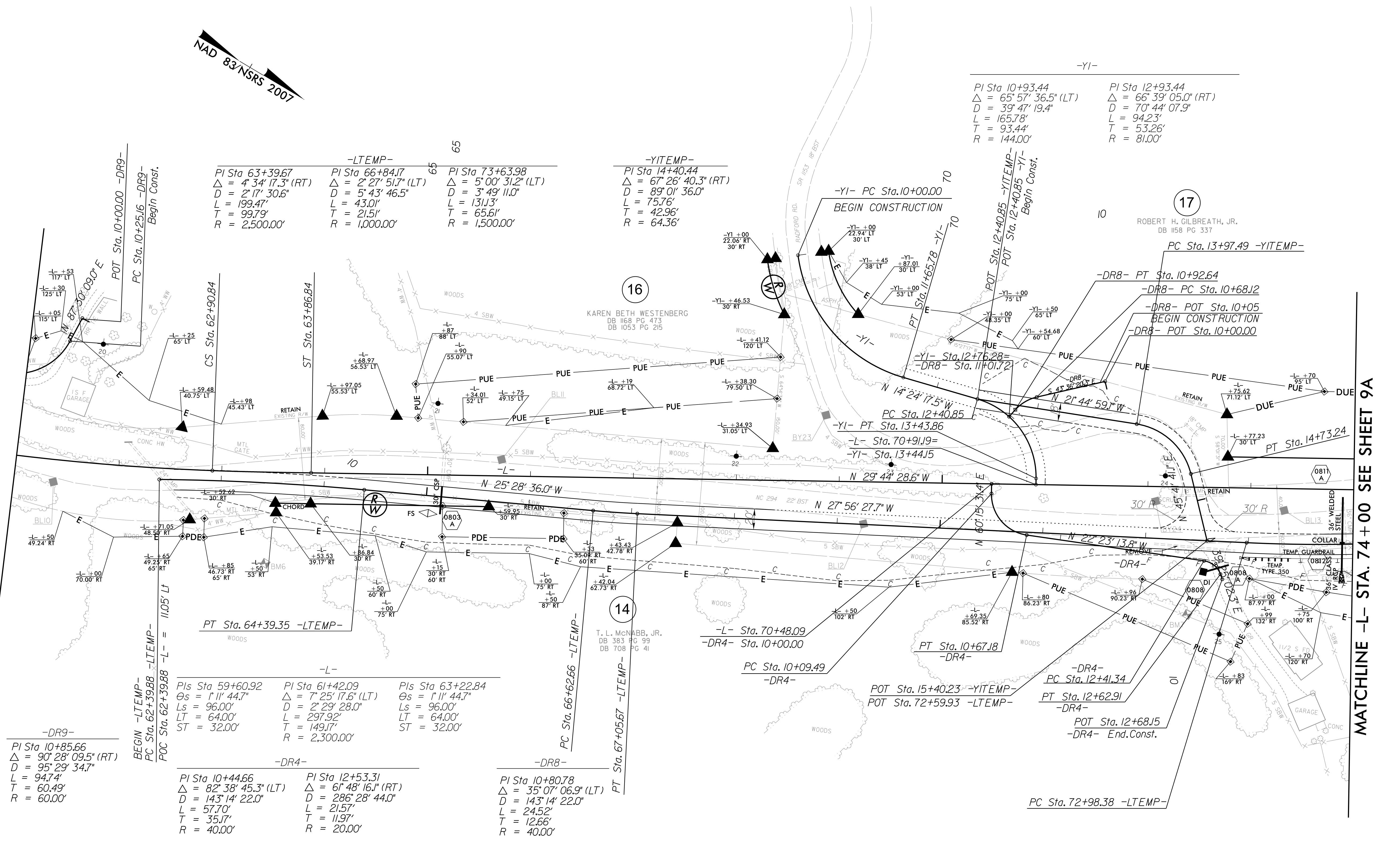
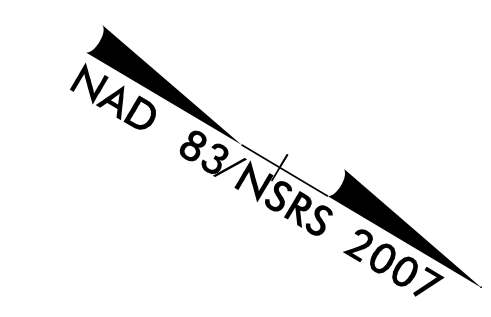
**V&M**  
Vaughn & Melton  
Consulting Engineers

Charlotte, North Carolina 282-357-0488  
Tri-Cities, Tennessee 423-467-8401  
Knoxville, Tennessee 865-546-5800  
Middlesboro, Kentucky 606-248-1600  
Spartanburg, South Carolina 864-574-4775

Asheville, North Carolina 828-253-2796

Copyright © 1994 Vaughn & Melton, Inc. All Rights Reserved

|                                       |                                    |
|---------------------------------------|------------------------------------|
| PROJECT REFERENCE NO.<br>R-3622B      | SHEET NO.<br>8A                    |
| ROADWAY DESIGN ENGINEER<br>SEAL 26960 | HYDRAULICS ENGINEER<br>SEAL 030453 |



**-LTEMP-**

|  |   |  |
|--|---|--|
| PI Sta 63+39.67<br>Δ = 4° 34' 17.3" (RT)<br>D = 2° 17' 30.6"<br>L = 199.47'<br>T = 99.79'<br>R = 2,500.00' | PI Sta 66+84.17<br>Δ = 2° 27' 51.7" (LT)<br>D = 5° 43' 46.5"<br>L = 43.01'<br>T = 21.51'<br>R = 1,000.00' | PI Sta 73+63.98<br>Δ = 5° 00' 31.2" (LT)<br>D = 3° 49' 11.0"<br>L = 131.13'<br>T = 65.61'<br>R = 1,500.00' |
|--|---|--|

**-YITEMP-**

|  |
|--|
| PI Sta 14+40.44<br>Δ = 67° 26' 40.3" (RT)<br>D = 89° 01' 36.0"<br>L = 75.76'<br>T = 42.96'<br>R = 64.36' |
|--|

**-Y1-**

|  |  |
|--|--|
| PI Sta 10+93.44<br>Δ = 65° 57' 36.5" (LT)<br>D = 39° 47' 19.4"<br>L = 165.78'<br>T = 93.44'<br>R = 144.00' | PI Sta 12+93.44<br>Δ = 66° 39' 05.0" (RT)<br>D = 70° 44' 07.9"<br>L = 94.23'<br>T = 53.26'<br>R = 81.00' |
|--|--|

**-DR9-**

|  |
|--|
| BEGIN -LTEMP-<br>PC Sta. 62+39.88 -L- = 110.5' LT<br>POC Sta. 62+39.88 -L- = 110.5' LT                   |
| PI Sta 10+85.66<br>Δ = 90° 28' 09.5" (RT)<br>D = 95° 29' 34.7"<br>L = 94.74'<br>T = 60.49'<br>R = 60.00' |

**-L-**

|  |   |  |
|--|---|--|
| PIs Sta 59+60.92<br>Os = 1° 11' 44.7"<br>Ls = 96.00'<br>LT = 64.00'<br>ST = 32.00' | PI Sta 61+42.09<br>Δ = 7° 25' 17.6" (LT)<br>D = 2° 29' 28.0"<br>Ls = 96.00'<br>LT = 64.00'<br>ST = 32.00' | PIs Sta 63+22.84<br>Os = 1° 11' 44.7"<br>Ls = 96.00'<br>LT = 64.00'<br>ST = 32.00' |
|--|---|--|

**-DR4-**

|   |   |   |
|---|---|---|
| PI Sta 10+44.66<br>Δ = 82° 38' 45.3" (LT)<br>D = 143° 14' 22.0"<br>L = 57.70'<br>T = 35.17'<br>R = 40.00' | PI Sta 12+53.31<br>Δ = 61° 48' 16.1" (RT)<br>D = 286° 28' 44.0"<br>L = 21.57'<br>T = 11.97'<br>R = 20.00' | PI Sta 10+80.78<br>Δ = 35° 07' 06.9" (LT)<br>D = 143° 14' 22.0"<br>L = 24.52'<br>T = 12.66'<br>R = 40.00' |
|---|---|---|

MATCHLINE -L- STA. 74 + 00 SEE SHEET 9A

SEE SHEET 24 FOR -LTEMP- PROFILE  
SEE SHEET 24 FOR -YITEMP- PROFILE

SHEET 8A TO BE USED ONLY FOR TEMPORARY CONSTRUCTION