

8/17/99

**V&M**  
**Vaughn & Melton**  
 Consulting Engineers

Asheville, North Carolina  
 828-253-2196

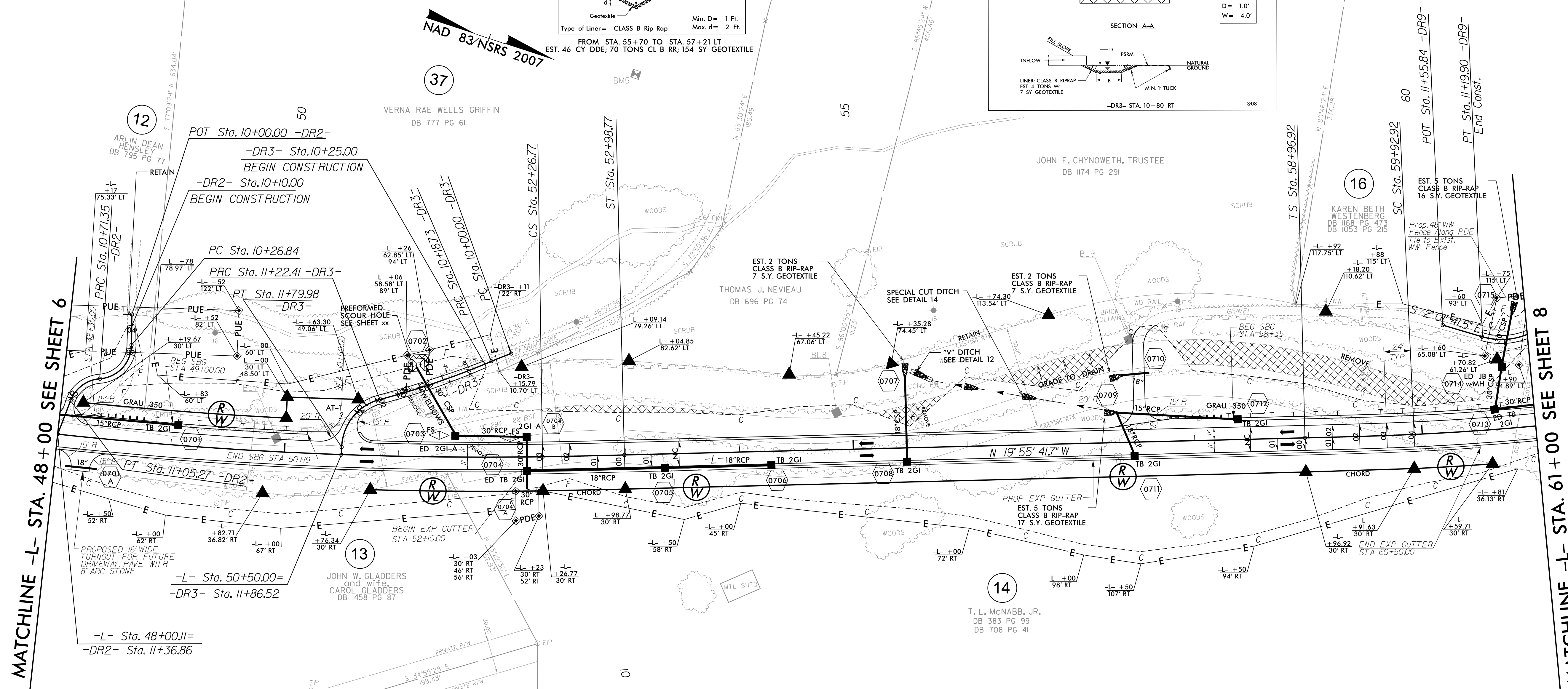
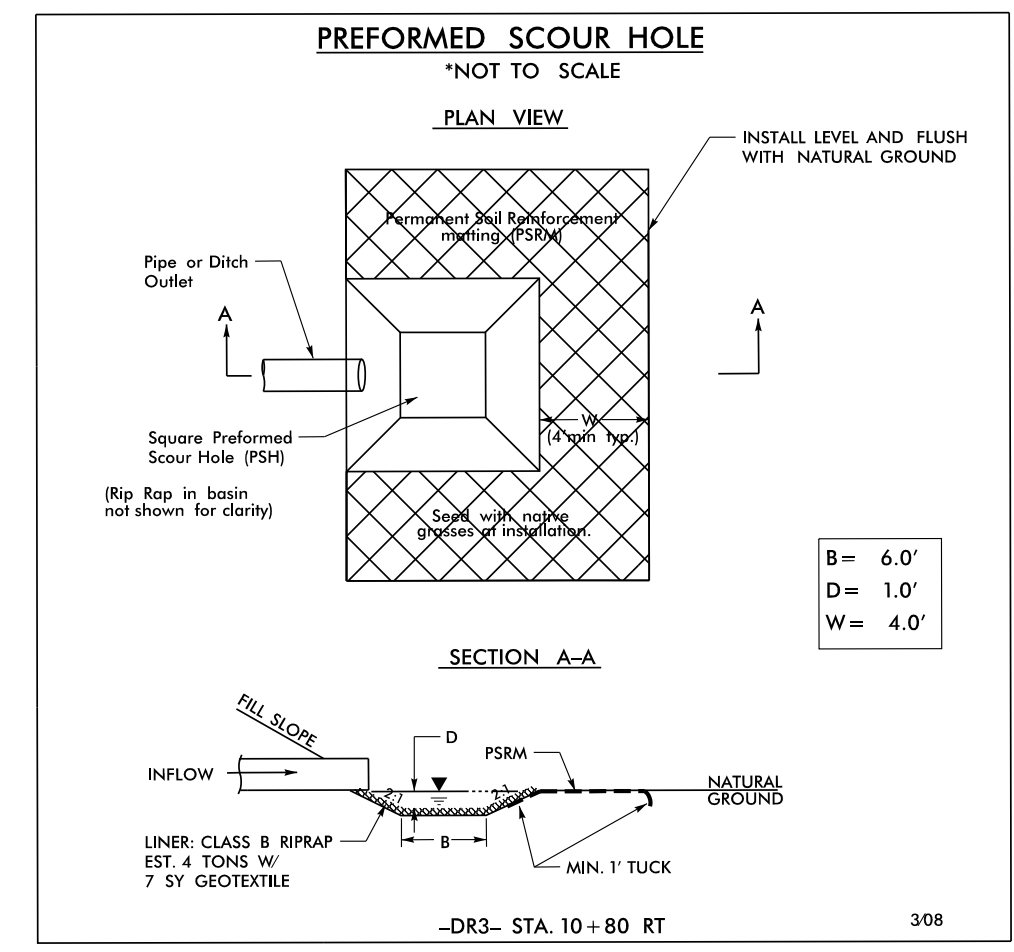
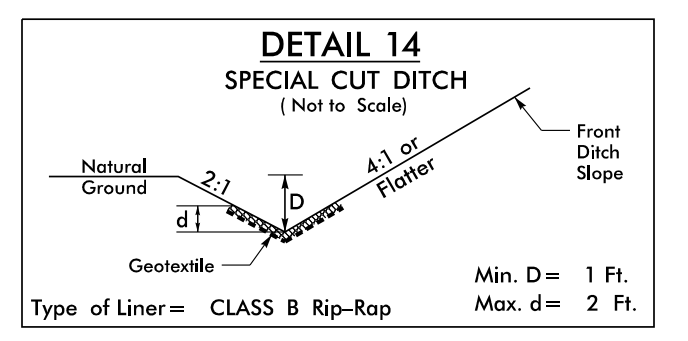
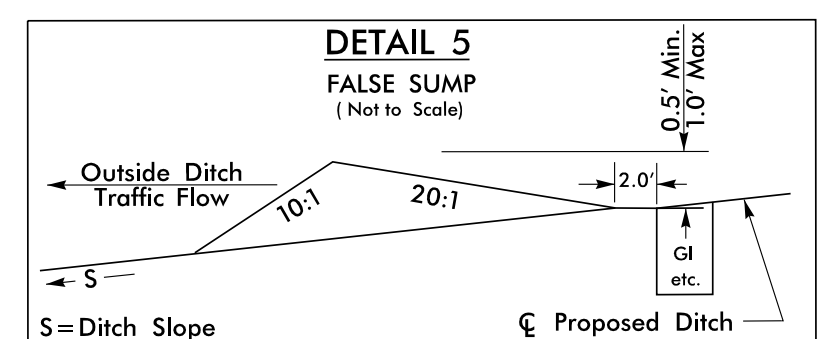
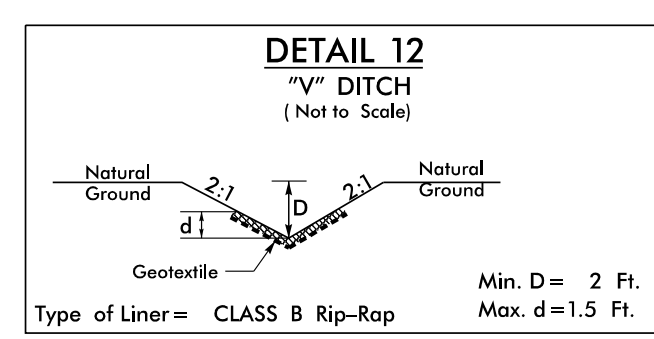
Charlotte, North Carolina 704-351-0488  
 Tri-Cities, Tennessee 423-467-8401  
 Knoxville, Tennessee 865-546-5800  
 Middlesboro, Kentucky 606-248-6600  
 Spartanburg, South Carolina 864-574-4775

Copyright © 1994 Vaughn & Melton, Inc. All Rights Reserved.

PROJECT REFERENCE NO. R-3622B  
 SHEET NO. 7

ROADWAY DESIGN ENGINEER  
 PROFESSIONAL SEAL  
 26960

HYDRAULICS ENGINEER  
 PROFESSIONAL SEAL  
 030453



MATCHLINE -L- STA. 48+00 SEE SHEET 6

MATCHLINE -L- STA. 61+00 SEE SHEET 8

-DR2-

PI Sta 10+54.33  
 $\Delta = 85^{\circ}00' 24.2''$  (RT)  
 $D = 190^{\circ}59' 09.4''$   
 $L = 44.51'$   
 $T = 27.49'$   
 $R = 30.00'$

-L-

|  |   |   |
|--|---|---|
| Pls Sta 47+56.8<br>$\Delta s = 0^{\circ}35' 33.8''$<br>$Ls = 72.00'$<br>$LT = 48.00'$<br>$ST = 24.00'$ | PI Sta 50+03.78<br>$\Delta = 7^{\circ}21' 10.1''$ (LT)<br>$D = 1^{\circ}38' 47.1''$<br>$L = 44.59'$<br>$T = 223.60'$<br>$R = 3,480.00'$ | Pls Sta 52+50.77<br>$\Delta s = 0^{\circ}35' 33.8''$<br>$Ls = 72.00'$<br>$LT = 48.00'$<br>$ST = 24.00'$ |
|--|---|---|

-DR3-

|  |  |   |
|--|--|---|
| PI Sta 11+55.89<br>$\Delta = 73^{\circ}17' 44.8''$ (LT)<br>$D = 127^{\circ}19' 26.1''$<br>$L = 57.57'$<br>$T = 33.48'$<br>$R = 45.00'$ | PI Sta 10+09.37<br>$\Delta = 3^{\circ}30' 09.2''$ (LT)<br>$D = 18^{\circ}42' 14.8''$<br>$L = 18.73'$<br>$T = 9.37'$<br>$R = 306.33'$ | PI Sta 10+70.67<br>$\Delta = 8^{\circ}29' 13.0''$ (RT)<br>$D = 8^{\circ}11' 06.4''$<br>$L = 103.69'$<br>$T = 51.94'$<br>$R = 700.00'$ |
|--|--|---|

EXIST PAVEMENT TO BE REMOVED

SEE SHEET 22 FOR -DR2- PROFILE  
 SEE SHEET 23 FOR -DR3- PROFILE  
 SEE SHEET 23 FOR -DR9- PROFILE  
 SEE SHEET 16 FOR -L- PROFILE

NOTE: USE ROD & LUG CONNECTORS W/SLEEVE GASKETS AT ALL ELBOWS

REVISIONS

1  
2  
3  
4  
5  
6  
7  
8  
9  
10  
11  
12  
13  
14  
15  
16  
17  
18  
19  
20  
21  
22  
23  
24  
25  
26  
27  
28  
29  
30  
31  
32  
33  
34  
35  
36  
37  
38  
39  
40  
41  
42  
43  
44  
45  
46  
47  
48  
49  
50  
51  
52  
53  
54  
55  
56  
57  
58  
59  
60  
61  
62  
63  
64  
65  
66  
67  
68  
69  
70  
71  
72  
73  
74  
75  
76  
77  
78  
79  
80  
81  
82  
83  
84  
85  
86  
87  
88  
89  
90  
91  
92  
93  
94  
95  
96  
97  
98  
99  
100