

V&M
Vaughn & Melton
 Consulting Engineers

Asheville, North Carolina
 828-253-2796

Charlotte, North Carolina
 704-357-0488

Tri-Cities, Tennessee
 423-467-8401

Knoxville, Tennessee
 865-546-6800

Middlesboro, Kentucky
 606-248-6600

Spartanburg, South Carolina
 864-574-4775

Copyright © 1994 Vaughn & Melton, Inc.
 All Rights Reserved

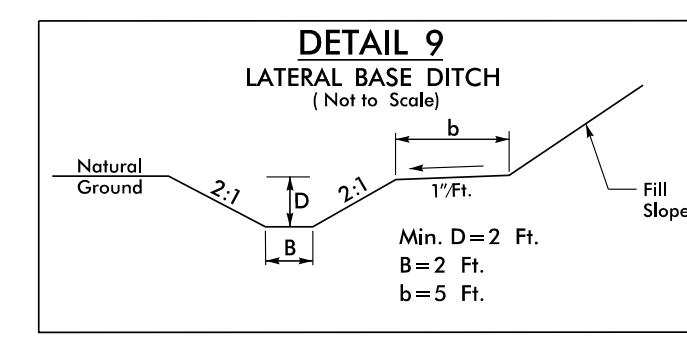
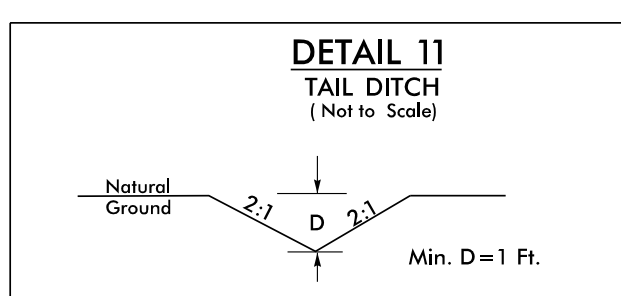
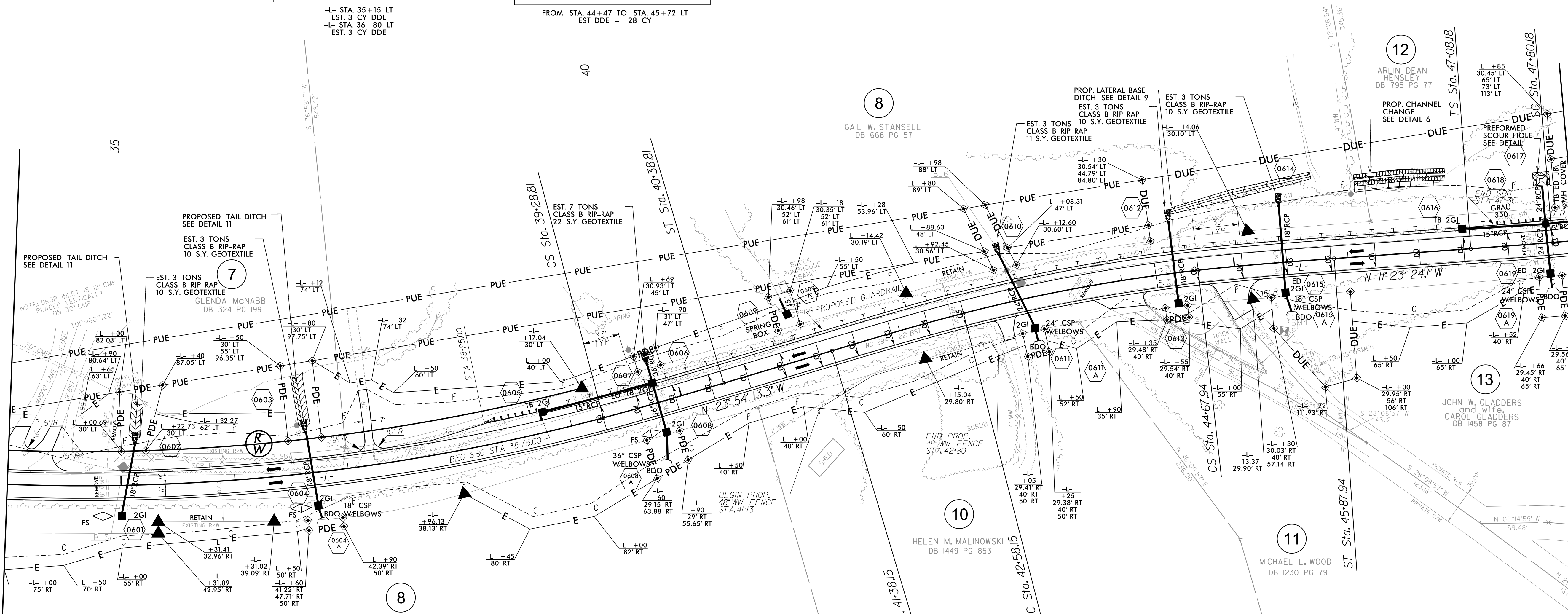
PROJECT REFERENCE NO. **R-3622B**
 SHEET NO. **6**

ROADWAY DESIGN ENGINEER
 NORTH CAROLINA PROFESSIONAL SEAL
 030453

HYDRAULICS ENGINEER
 NORTH CAROLINA PROFESSIONAL SEAL
 030453

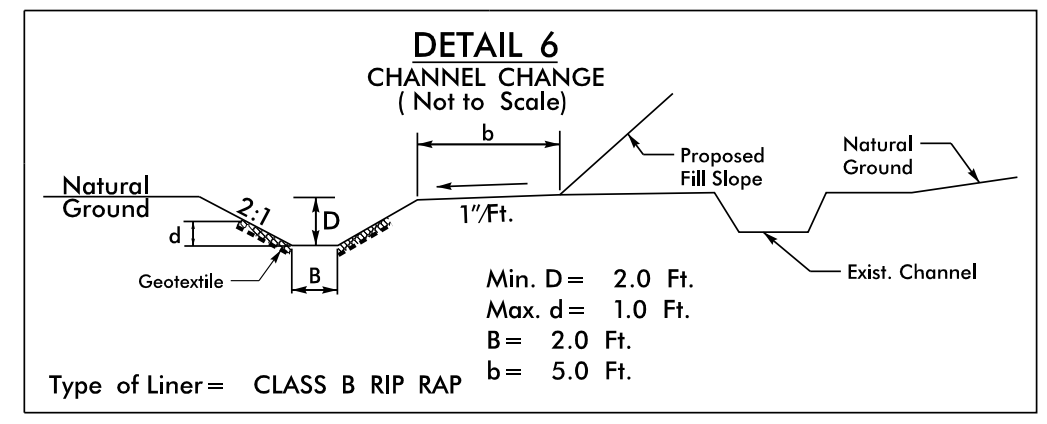
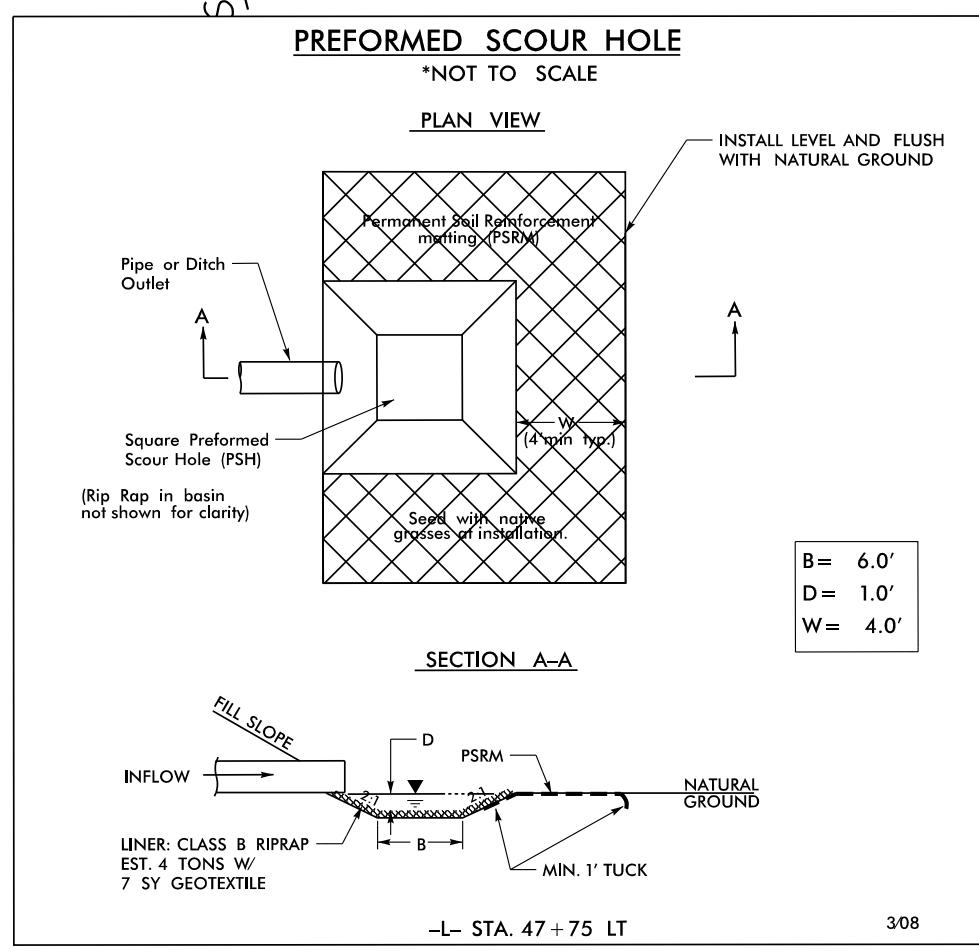
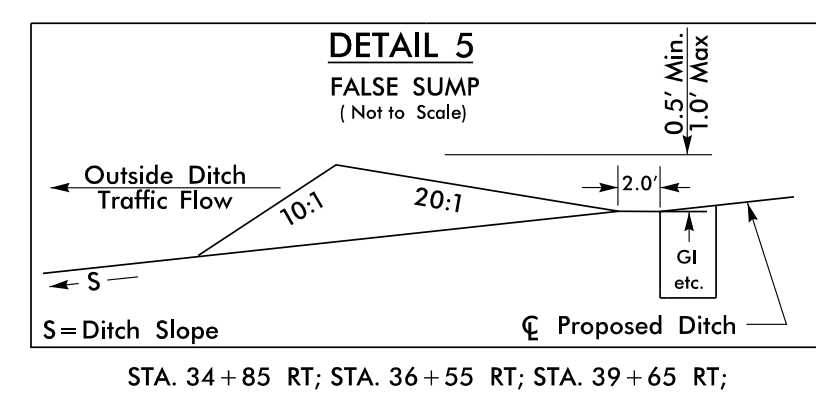
MATCHLINE -L- STA. 34+00 SEE SHEET 5

MATCHLINE -L- STA. 48+00 SEE SHEET 7



NAD 83/NSRS 2007

Pls Sta 31+03.64 $\Theta_s = 1^\circ 46' 13.4''$ $L_s = 110.00'$ $LT = 73.34'$ $ST = 36.67'$	Pls Sta 35+41.13 $\Delta = 25^\circ 22' 50.9''$ (LT) $D = 3' 13' 07.9''$ $L = 788.50'$ $T = 400.83'$ $R = 1,780.00'$	Pls Sta 39+65.48 $\Theta_s = 1^\circ 46' 13.4''$ $L_s = 110.00'$ $LT = 73.34'$ $ST = 36.67'$
Pls Sta 42+18.15 $\Theta_s = 2^\circ 16' 36.0''$ $L_s = 120.00'$ $LT = 80.01'$ $ST = 40.01'$	Pls Sta 43+63.21 $\Delta = 7^\circ 57' 37.3''$ (RT) $D = 3' 47' 39.9''$ $L = 209.79'$ $T = 105.06'$ $R = 1,510.00'$	Pls Sta 45+07.94 $\Theta_s = 2^\circ 16' 36.0''$ $L_s = 120.00'$ $LT = 80.01'$ $ST = 40.01'$
Pls Sta 47+56.18 $\Theta_s = 0^\circ 35' 33.8''$ $L_s = 72.00'$ $LT = 48.00'$ $ST = 24.00'$	Pls Sta 50+03.78 $\Delta = 7^\circ 21' 10.1''$ (LT) $D = 1' 38' 47.1''$ $L = 446.59'$ $T = 223.60'$ $R = 3,480.00'$	Pls Sta 52+50.77 $\Theta_s = 0^\circ 35' 33.8''$ $L_s = 72.00'$ $LT = 48.00'$ $ST = 24.00'$



NOTE: USE ROD & LUG CONNECTORS W/SLEEVE GASKETS AT ALL ELBOWS

FROM STA. 46+10 TO STA. 46+90
 EST. 20 CY DDE; 18 TONS CL B RR; 40 SY GEOTEXTILE

SEE SHEET 15 FOR -L- PROFILE

REVISIONS

\$\$\$\$\$SYTIME\$\$\$\$\$
 \$\$\$SERNAME\$\$\$