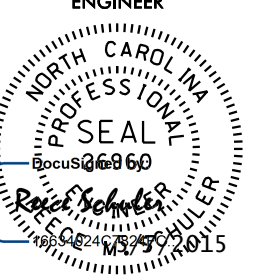
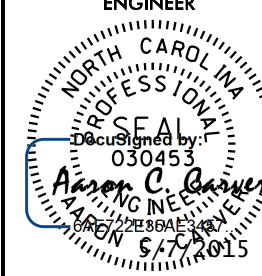


V&M
Vaughn & Melton
 Consulting Engineers

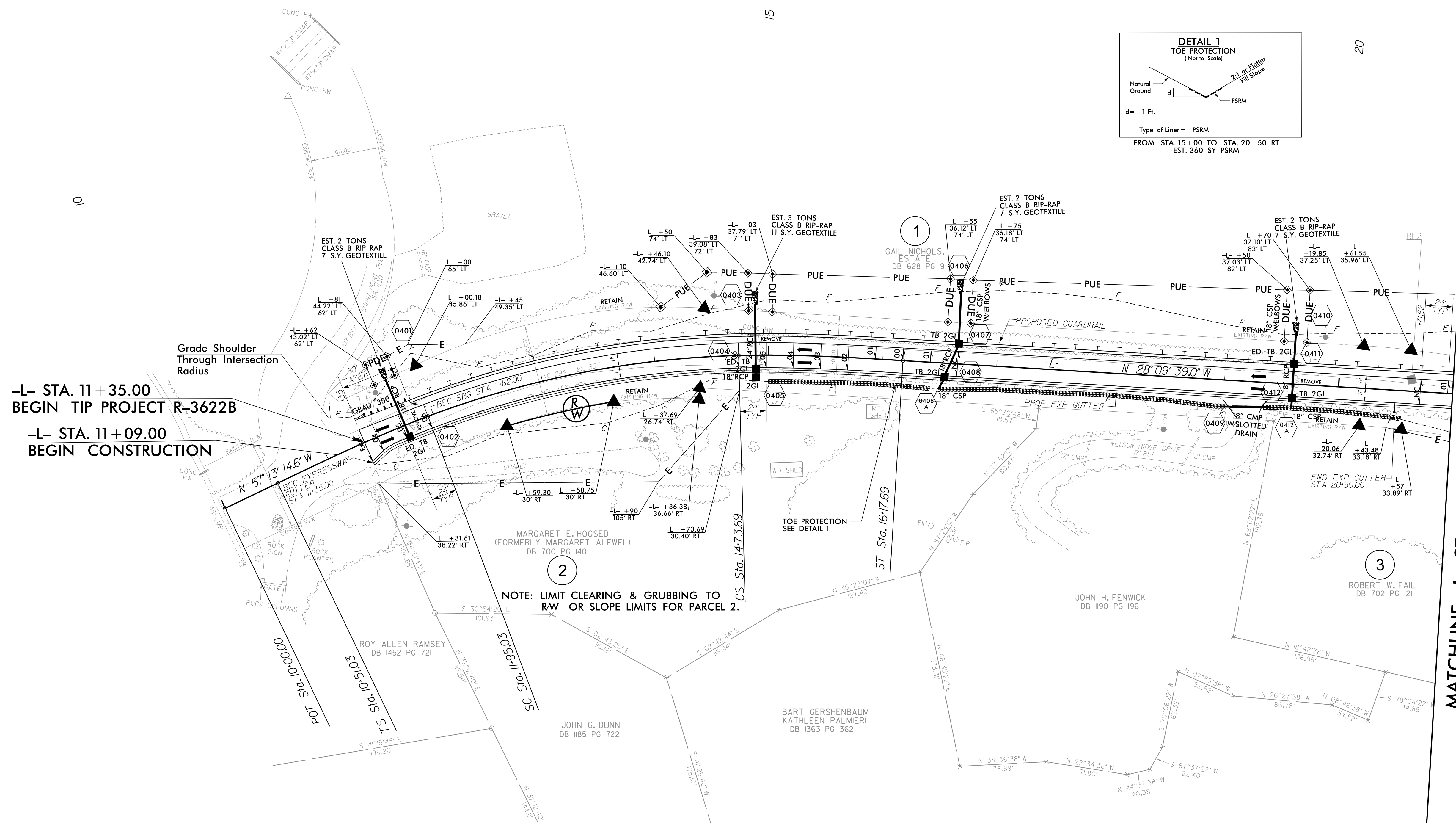
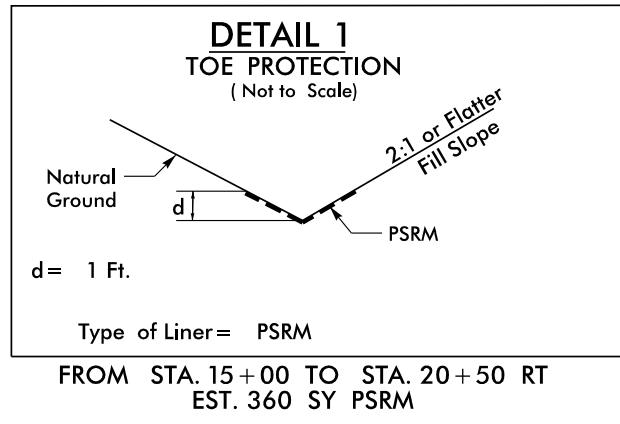
Asheville, North Carolina
 828-253-2796

Charlotte, North Carolina
 104-357-0488
 Tri-Cities, Tennessee
 423-467-8400
 Knoxville, Tennessee
 865-546-9900
 Middlesboro, Kentucky
 606-248-6600
 Spartanburg, South Carolina
 864-574-4775

Copyright © 1998 Vaughn & Melton, Inc.
 All Rights Reserved

PROJECT REFERENCE NO. R-3622B	SHEET NO. 4
ROADWAY DESIGN ENGINEER	HYDRAULICS ENGINEER
 SEAL 030453 R. S. Schuler 08/15	 SEAL 030453 A. C. B... 08/15

NAD 83/NSRS 2007



-L- STA. 11+35.00
 BEGIN TIP PROJECT R-3622B

-L- STA. 11+09.00
 BEGIN CONSTRUCTION

MATCHLINE -L- STA. 21+00 SEE SHEET 5

DATUM DESCRIPTION

THE LOCALIZED COORDINATE SYSTEM DEVELOPED FOR THIS PROJECT IS BASED ON THE STATE PLANE COORDINATES ESTABLISHED BY NCGS FOR MONUMENT "SMOKEY" WITH NAD 83/NSRS 2007 STATE PLANE GRID COORDINATES OF NORTHING: 521488.4600(ft) EASTING: 448118.6300(ft) ELEVATION: 1807.451(ft)

THE AVERAGE COMBINED GRID FACTOR USED ON THIS PROJECT (GROUND TO GRID) IS: 0.99979974

THE N.C. LAMBERT GRID BEARING AND LOCALIZED HORIZONTAL GROUND DISTANCE FROM "SMOKEY" TO -L- STATION 10+00.00 IS S 20°05'53" E 5725.99'

ALL LINEAR DIMENSIONS ARE LOCALIZED HORIZONTAL DISTANCES VERTICAL DATUM USED IS NAVD 88

NOTE: USE ROD & LUG CONNECTORS W/SLEEVE GASKETS AT ALL ELBOWS

-L-

Pls Sta 11+47.07 $\Theta_s = 4^\circ 57' 01.3''$ $D = 144.00'$ $LT = 96.04'$ $ST = 48.03'$	Pls Sta 13+35.67 $\Delta = 19^\circ 09' 33.1'' (RT)$ $D = 6' 52' 31.8''$ $L = 278.66'$ $T = 140.64'$ $R = 833.33'$	Pls Sta 15+21.73 $\Theta_s = 4^\circ 57' 01.3''$ $D = 144.00'$ $LT = 96.04'$ $ST = 48.03'$
--	---	--