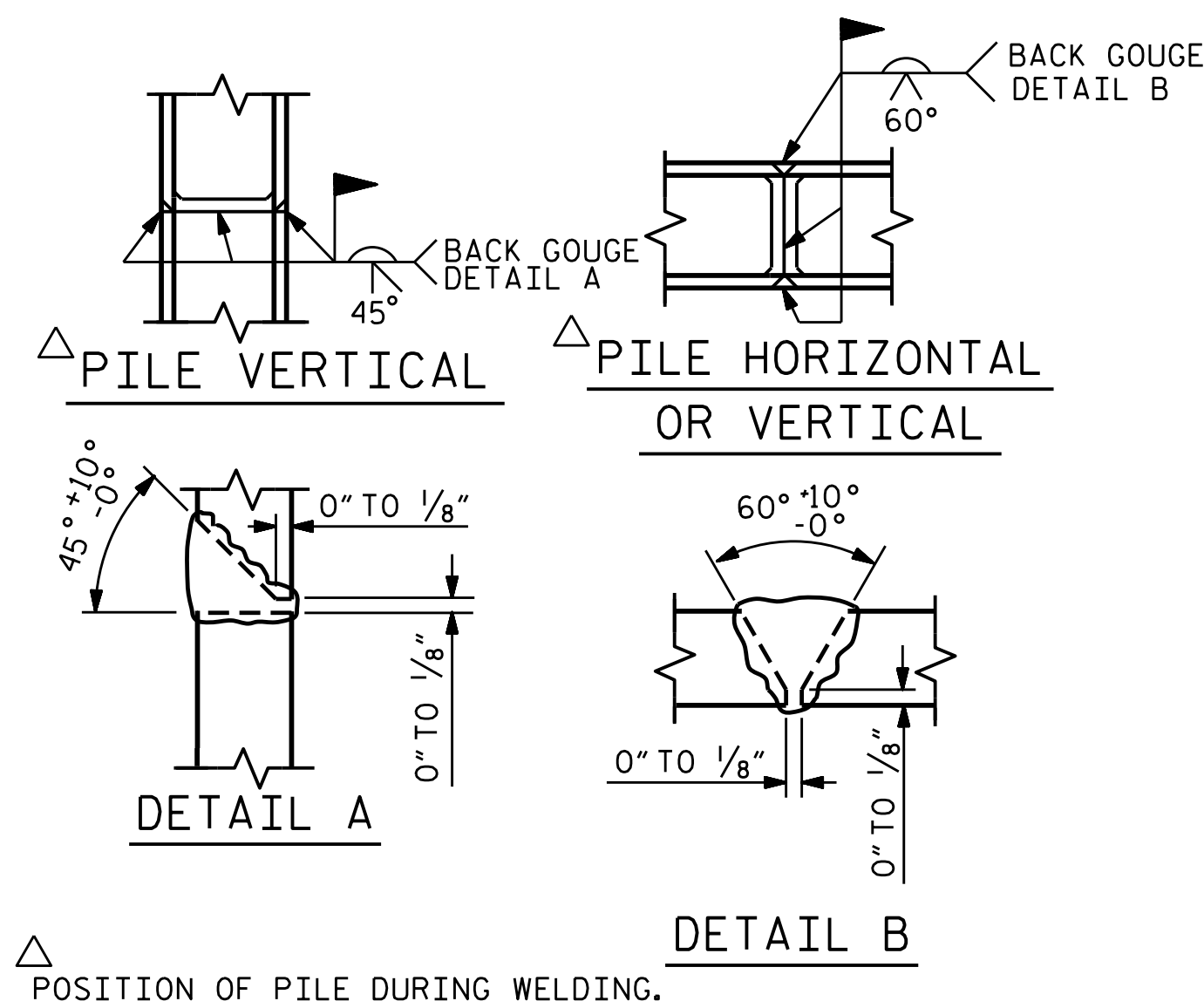


BAGGED STONE AND PIPE SHALL BE PLACED IMMEDIATELY AFTER COMPLETION OF END BENT EXCAVATION. PIPE MAY BE EITHER CONCRETE, CORRUGATED STEEL, CORRUGATED ALUMINUM ALLOY, OR CORRUGATED PLASTIC. PERFORATED PIPE WILL NOT BE ALLOWED.

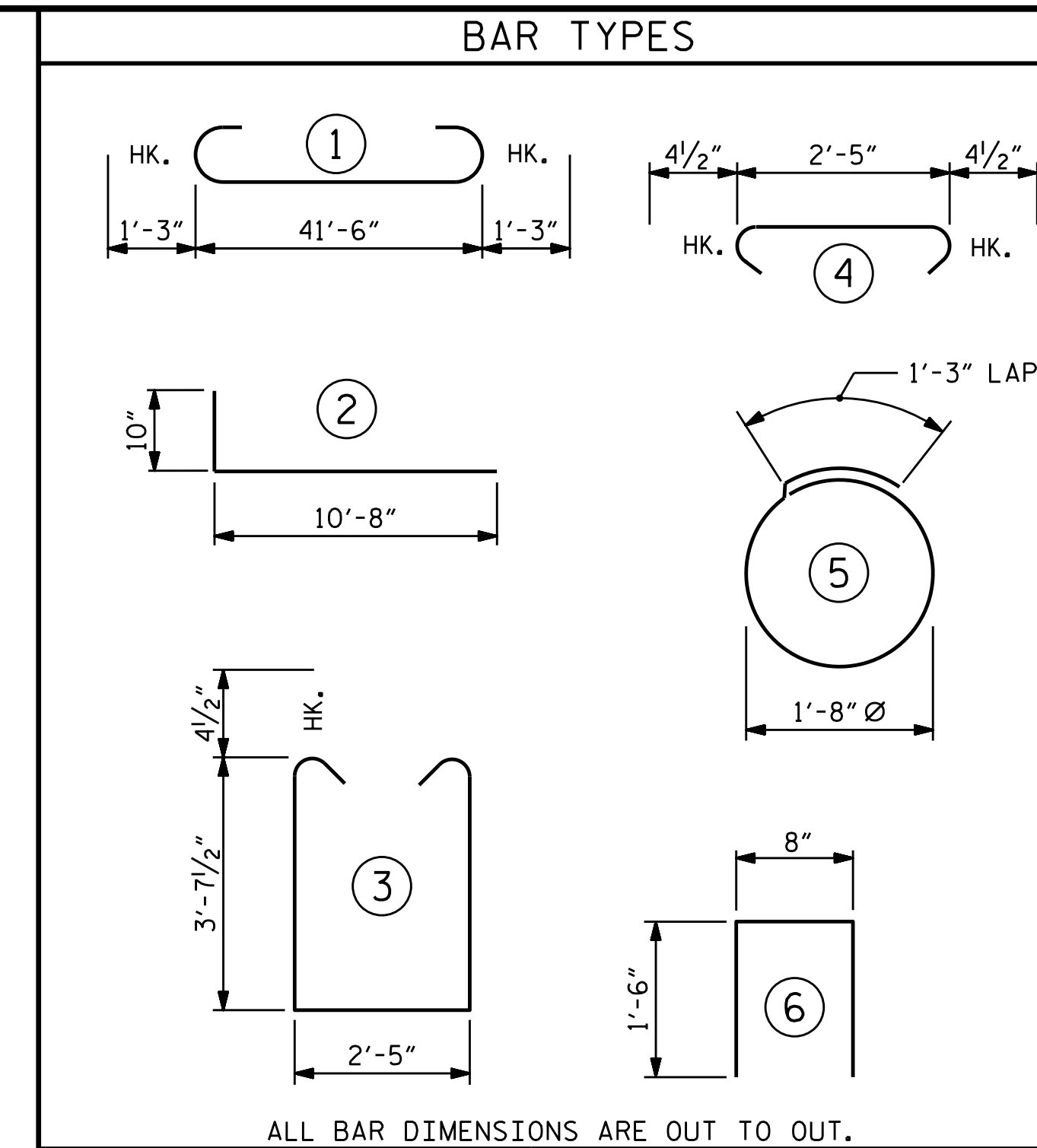
BAGGED STONE SHALL REMAIN IN PLACE UNTIL THE ENGINEER DIRECTS THAT IT BE REMOVED. THE CONTRACTOR SHALL REMOVE AND DISPOSE OF SILT ACCUMULATIONS AT BAGGED STONE WHEN SO DIRECTED BY THE ENGINEER. BAGS SHALL BE REMOVED AND REPLACED WHENEVER THE ENGINEER DETERMINES THAT THEY HAVE DETERIORATED AND LOST THEIR EFFECTIVENESS.

NO SEPARATE PAYMENT WILL BE MADE FOR THIS WORK AND THE ENTIRE COST OF THIS WORK SHALL BE INCLUDED IN THE UNIT CONTRACT PRICE BID FOR THE SEVERAL PAY ITEMS.

TEMPORARY DRAINAGE AT END BENT



PILE SPLICE DETAILS



BILL OF MATERIAL

END BENT 1

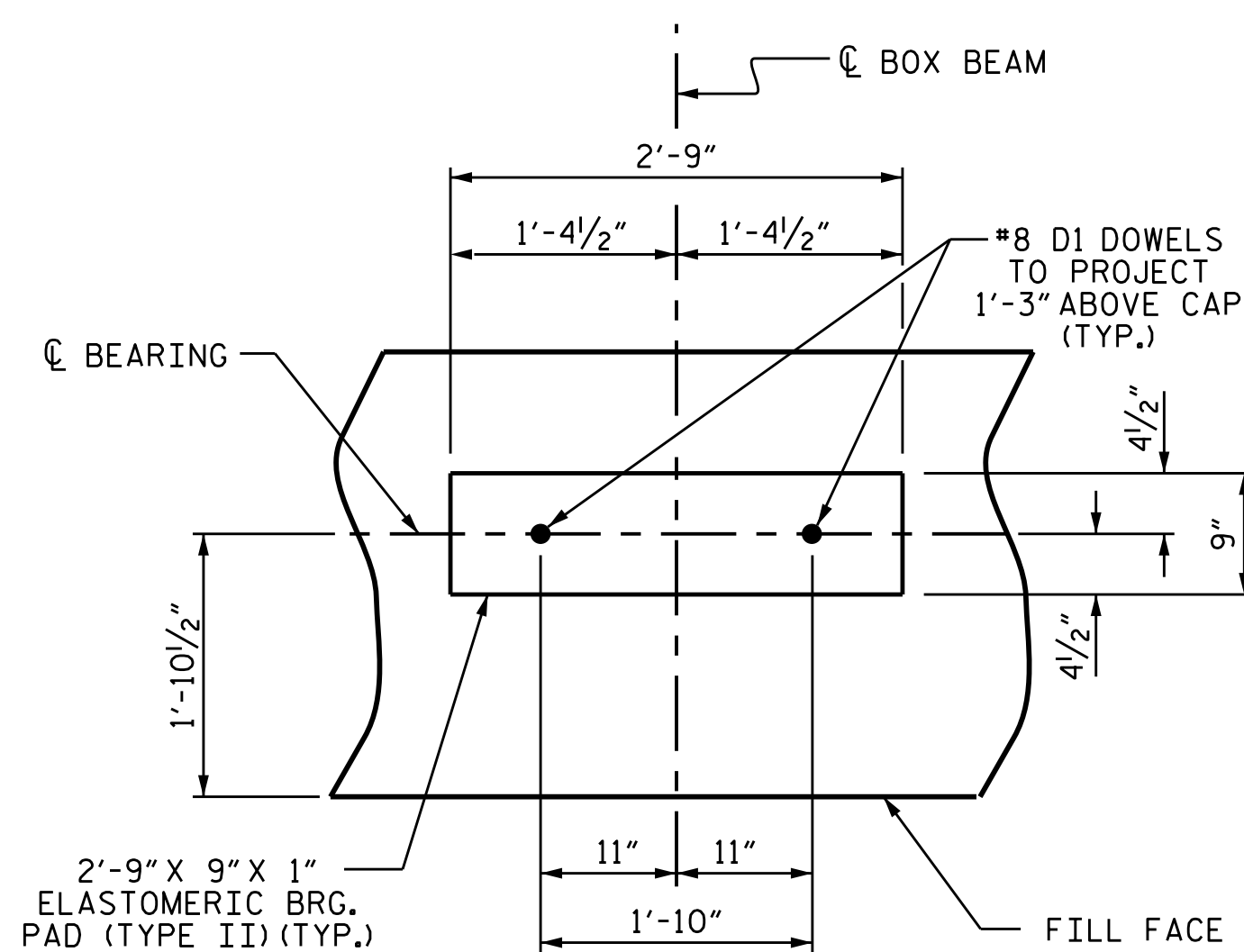
BAR NO.	NO.	SIZE	TYPE	LENGTH	WEIGHT
B1	8	#9	1	44'-0"	1197
B2	28	#4	STR	22'-1"	413
B3	11	#4	STR	2'-5"	18
D1	24	#8	STR	2'-3"	144
H1	48	#5	2	11'-6"	576
K1	8	#4	STR	3'-1"	16
K2	16	#4	STR	22'-1"	236
S1	56	#4	3	10'-5"	390
S2	56	#4	4	3'-2"	118
S3	28	#4	5	6'-6"	122
U1	36	#4	6	3'-8"	88
V1	60	#4	STR	7'-8"	307
V2	72	#4	STR	6'-0"	289

REINFORCING STEEL LBS. 3,914

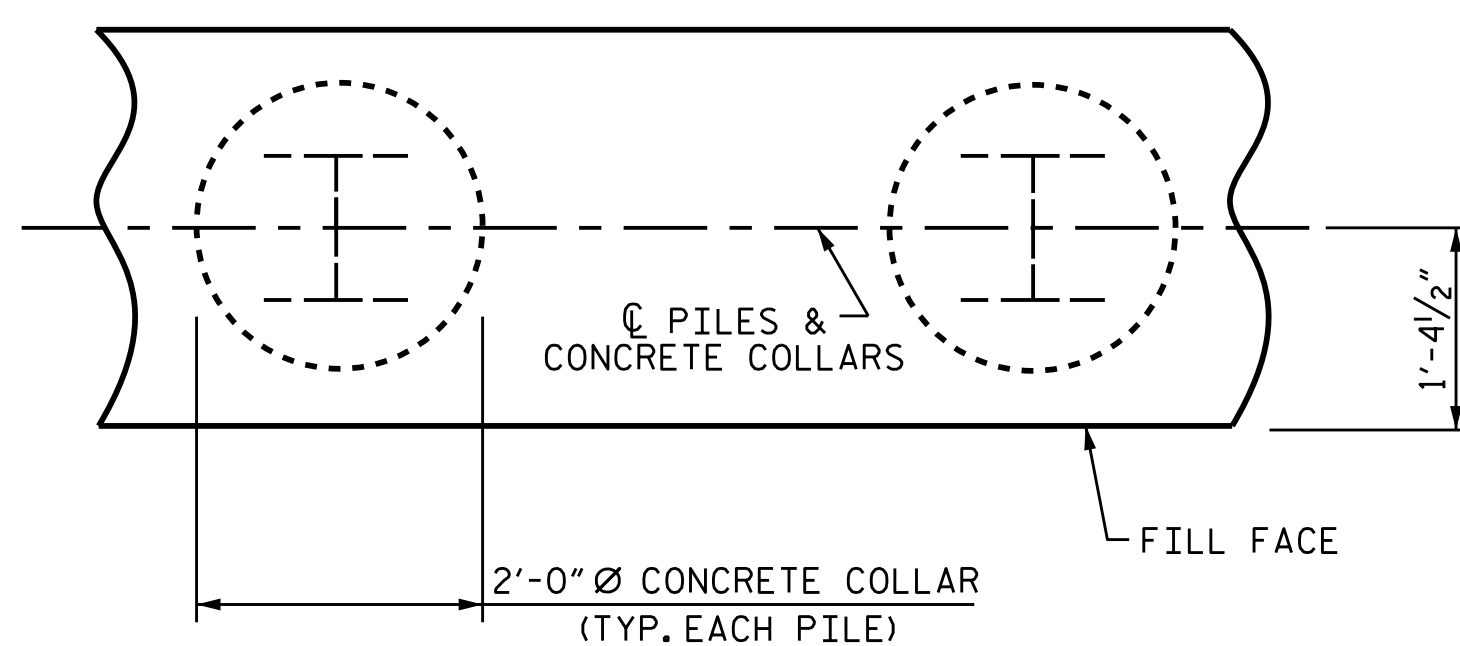
CLASS A CONCRETE BREAKDOWN

POUR #1	CAP, LOWER PART OF WINGS & COLLARS	C.Y.	21.3
POUR #2	BACKWALL & UPPER PART OF WINGS	C.Y.	7.1
TOTAL CLASS A CONCRETE		C.Y.	28.4

HP 12X53 STEEL PILES
NO: 7 LIN. FT. 175

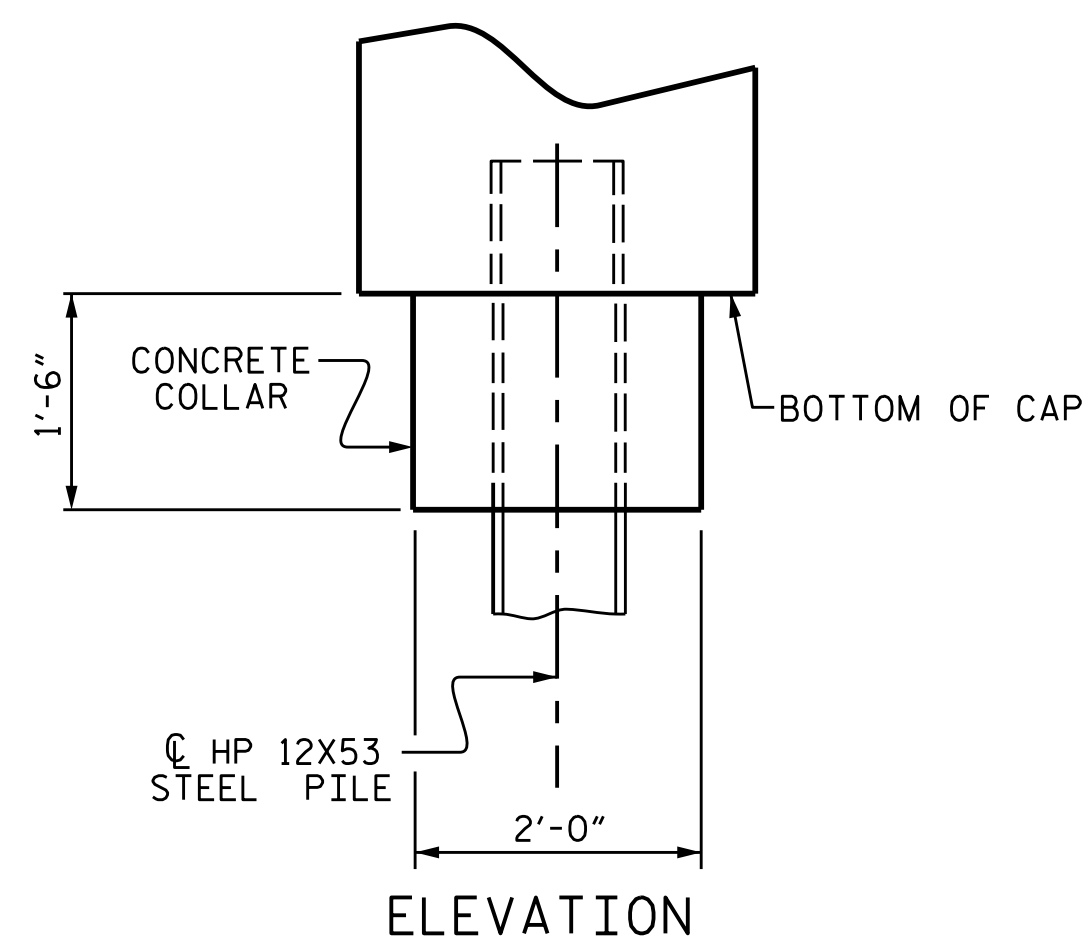


DETAIL "A"

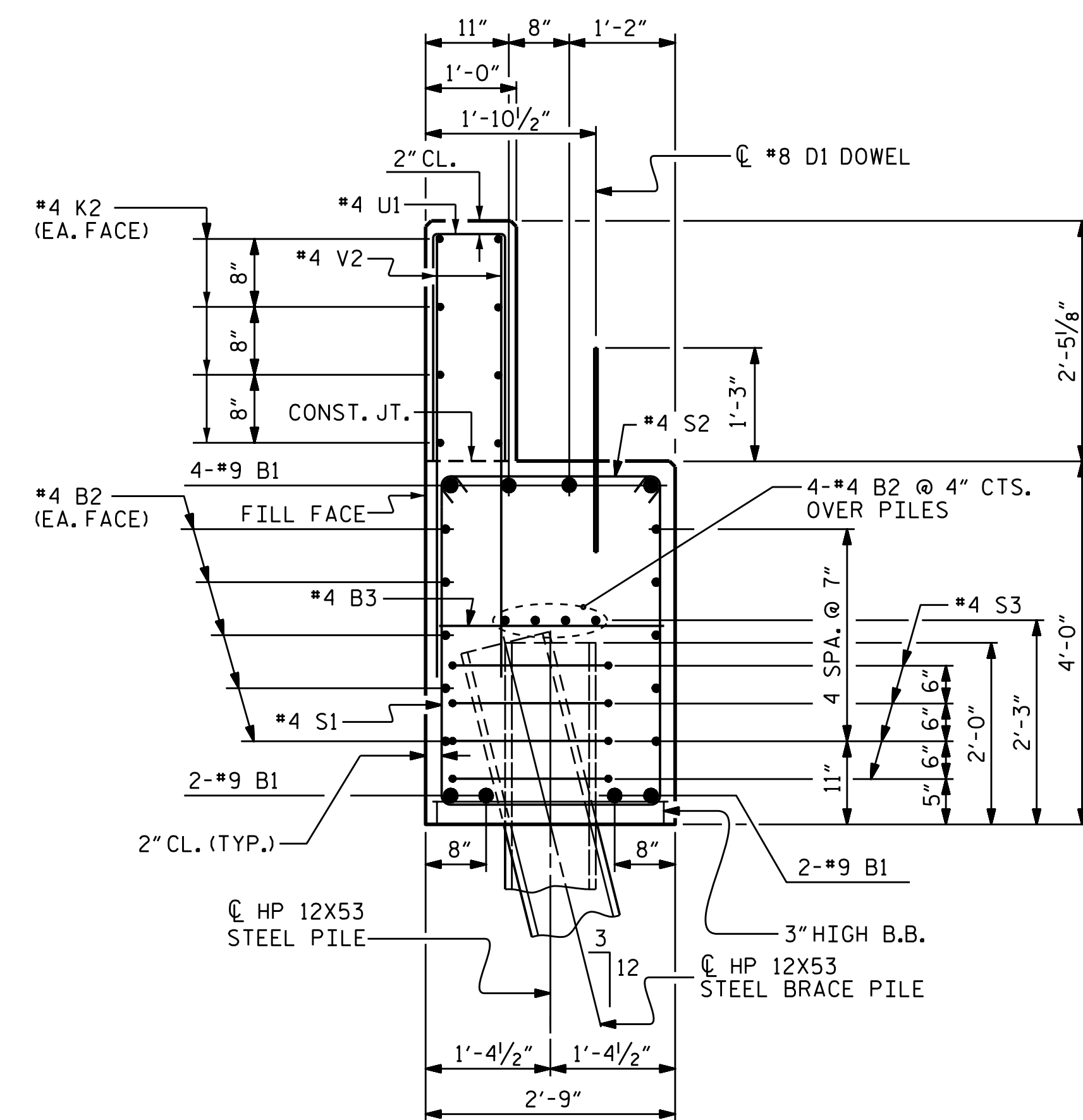


PLAN

CORROSION PROTECTION FOR STEEL PILES DETAIL

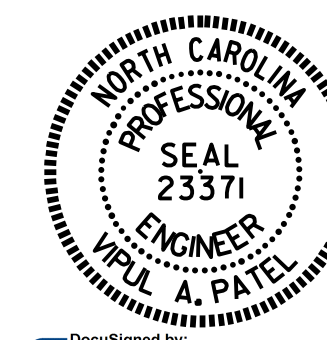


ELEVATION



SECTION A-A

(CONCRETE COLLAR NOT SHOWN FOR CLARITY. SEE "CORROSION PROTECTION FOR STEEL PILES DETAIL.")



PROJECT NO. B-4972
CABARRUS COUNTY
STATION: 22+55.00 -L-

SHEET 3 OF 3

STATE OF NORTH CAROLINA
DEPARTMENT OF TRANSPORTATION
RALEIGH

SUBSTRUCTURE
END BENT 1

REVISIONS				SHEET NO.	
NO.	BY:	DATE:	NO.	BY:	DATE:
1			3		
2			4		

TOTAL SHEETS 31

ASSEMBLED BY: N.D. AIUTO DATE: 10/6/14
CHECKED BY: M.E. GILES DATE: 12/17/14
DESIGN ENGINEER OF RECORD: J.P. MCCARTHA DATE: 12/17/14