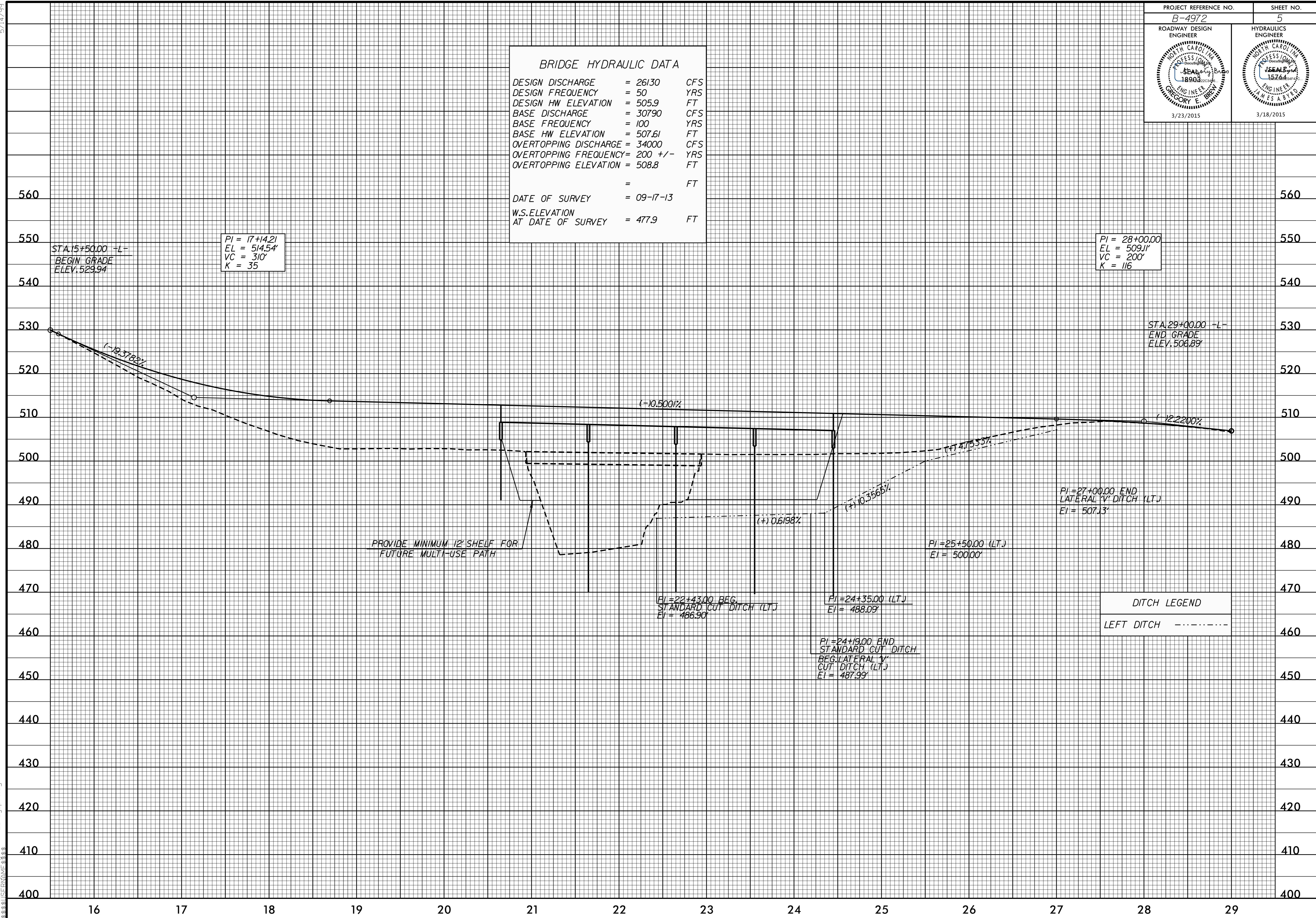


BRIDGE HYDRAULIC DATA		
DESIGN DISCHARGE	= 26130	CFS
DESIGN FREQUENCY	= 50	YRS
DESIGN HW ELEVATION	= 505.9	FT
BASE DISCHARGE	= 30790	CFS
BASE FREQUENCY	= 100	YRS
BASE HW ELEVATION	= 507.61	FT
OVERTOPPING DISCHARGE	= 34000	CFS
OVERTOPPING FREQUENCY	= 200 +/-	YRS
OVERTOPPING ELEVATION	= 508.8	FT
DATE OF SURVEY	= 09-17-13	FT
W.S. ELEVATION AT DATE OF SURVEY	= 477.9	FT



5/14/99  
 B:\MAR-2015\1602\16-4972-r-rd-j-pf1.dgn  
 16:43:50  
 16:43:50