

# SURVEY CONTROL SHEET

PROJECT REFERENCE NO.	SHEET NO.
B-4972	1-C
Location and Surveys	

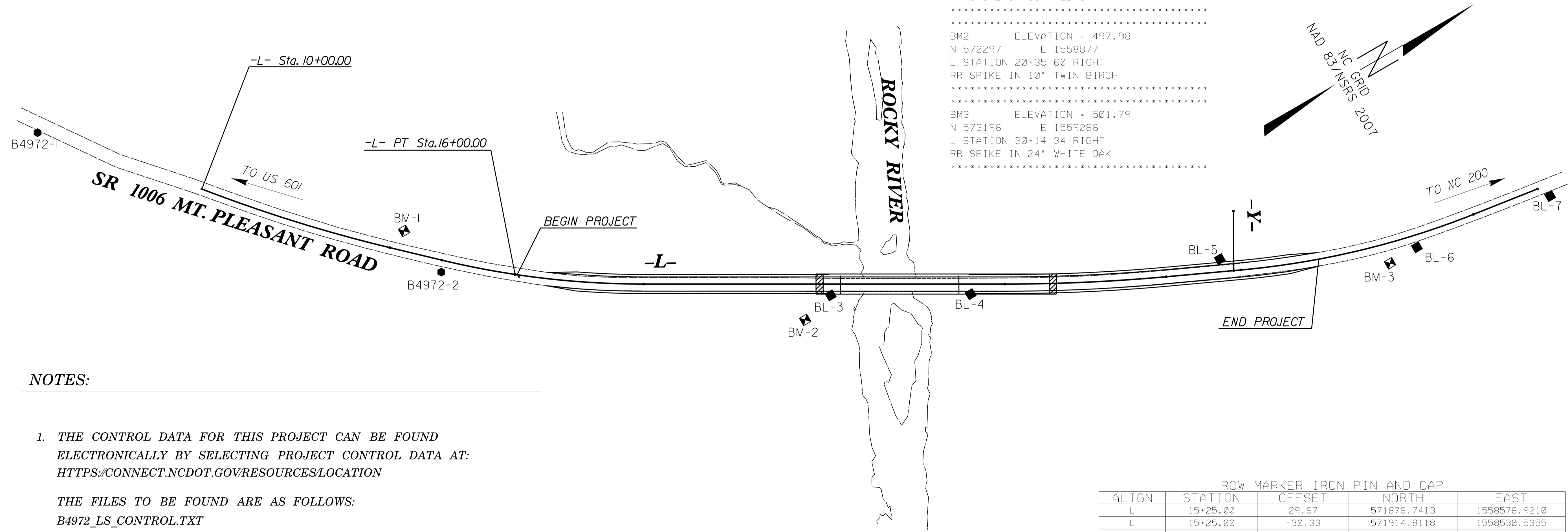
L			
TYPE	STATION	NORTH	EAST
PC	10+00.00	571527.9409	1558180.2262
PT	13+30.89	571752.2250	1558423.1750
PC	14+21.19	571817.7492	1558485.3098
PT	17+63.15	572091.2070	1558689.3095
PC	23+70.17	572617.0770	1558992.5148
PT	26+41.97	572858.3637	1559117.4328
PC	27+68.10	572972.8825	1559170.2894
PT	31+70.96	573357.7616	1559284.5306
POT	32+86.92	573472.5118	1559301.2471

Y			
TYPE	STATION	NORTH	EAST
POT	10+00.00	573011.3016	1559078.3015
POT	11+00.00	572961.6565	1559165.1080

BL	POINT	DESC.	NORTH	EAST	ELEVATION	L STATION	OFFSET
1		B4972-1	571335.9990	1557960.2960	557.63	OUTSIDE PROJECT LIMITS	
2		B4972-2	571806.8390	1558502.1960	539.90	14+24.84	19.76 RT
3		BL-3	572354.2425	1558862.7082	500.61	20+77.63	18.83 RT
4		BL-4	572558.9429	1558978.6030	500.80	23+12.86	16.99 RT
5		BL-5	572951.2524	1559136.7779	508.73	27+34.41	21.36 LT
6		BL-6	573248.0211	1559284.9108	498.96	30+63.87	20.35 RT
7		BL-7	573485.0086	1559322.2005	494.71	OUTSIDE PROJECT LIMITS	

**DATUM DESCRIPTION**  
 THE LOCALIZED COORDINATE SYSTEM DEVELOPED FOR THIS PROJECT IS BASED ON THE STATE PLANE COORDINATES ESTABLISHED BY NCDOT FOR MONUMENT "B4972-2" WITH NAD 83/NSRS 2007 STATE PLANE GRID COORDINATES OF NORTHING: 571806.839(fft) EASTING: 1558502.196(fft) ELEVATION: 539.90(fft)  
 THE AVERAGE COMBINED GRID FACTOR USED ON THIS PROJECT (GROUND TO GRID) IS: 0.9998530  
 THE N.C. LAMBERT GRID BEARING AND LOCALIZED HORIZONTAL GROUND DISTANCE FROM "B4972-2" TO -L- PT STATION 15+46.50 IS N 31°49'02" E 124.02'  
 ALL LINEAR DIMENSIONS ARE LOCALIZED HORIZONTAL DISTANCES  
 VERTICAL DATUM USED IS NAVD 88

.....  
 BM1 ELEVATION = 543.53  
 N 571787 E 1558411  
 L STATION 13+48 33 LEFT  
 RR SPIKE IN 15" RED OAK  
 .....  
 BM2 ELEVATION = 497.98  
 N 572297 E 1558877  
 L STATION 20+35 60 RIGHT  
 RR SPIKE IN 10" TWIN BIRCH  
 .....  
 BM3 ELEVATION = 501.79  
 N 573196 E 1559286  
 L STATION 30+14 34 RIGHT  
 RR SPIKE IN 24" WHITE OAK  
 .....



**NOTES:**

1. THE CONTROL DATA FOR THIS PROJECT CAN BE FOUND ELECTRONICALLY BY SELECTING PROJECT CONTROL DATA AT: [HTTPS://CONNECT.NCDOT.GOV/RESOURCES/LOCATION](https://connect.ncdot.gov/resources/location)  
  
THE FILES TO BE FOUND ARE AS FOLLOWS:  
B4972\_LS\_CONTROL.TXT  
B4972\_LS\_LOCAL.TXT
2. SITE CALIBRATION INFORMATION HAS NOT BEEN PROVIDED FOR THIS PROJECT. IF FURTHER INFORMATION IS NEEDED, PLEASE CONTACT THE LOCATION AND SURVEYS UNIT.
3. PROJECT CONTROL ESTABLISHED USING GLOBAL POSITIONING SYSTEM, UTILIZING THE NCGS RTN SYSTEM (VRS).  
  
MONUMENTS USED OR SET FOR PROJECT CONTROL BY THE NCDOT LOCATION AND SURVEYS UNIT:  
  - INDICATES GEODETIC CONTROL MONUMENTS FOR HORIZONTAL CONTROL
  - INDICATES BASELINE MONUMENTS FOR HORIZONTAL PROJECT CONTROL
  - ⊠ INDICATES BENCHMARKS FOR VERTICAL CONTROL

ROW MARKER IRON PIN AND CAP				
ALIGN	STATION	OFFSET	NORTH	EAST
L	15+25.00	29.67	571876.7413	1558576.9210
L	15+25.00	-30.33	571914.8118	1558530.5355
L	15+25.00	63.00	571855.5985	1558602.6816
L	15+25.00	-50.00	571927.2882	1558515.3341
L	17+63.15	63.00	572059.7386	1558743.8874
L	17+63.15	-50.00	572116.1820	1558645.9938
L	18+75.00	-75.00	572225.5666	1558680.2047
L	23+70.17	-75.00	572654.5394	1558927.5412
L	23+70.17	63.00	572585.6086	1559047.0927
L	24+85.00	-75.00	572752.5781	1558981.5951
L	25+77.00	-55.00	572823.8000	1559040.1435
L	26+41.97	63.00	572831.9623	1559174.6340
L	26+41.97	-55.00	572881.4125	1559067.4954
L	27+27.64	-55.00	572959.1954	1559103.3964
L	27+68.10	63.00	572946.4811	1559227.4905
L	29+50.00	63.00	573123.7562	1559295.7304
L	29+50.00	30.96	573133.3001	1559265.1475

NOTE: DRAWING NOT TO SCALE