

**This electronic collection of documents is provided
for the convenience of the user
and is Not a Certified Document –**

**The documents contained herein were originally issued
and sealed by the individuals whose names and license
numbers appear on each page, on the dates appearing
with their signature on that page.**

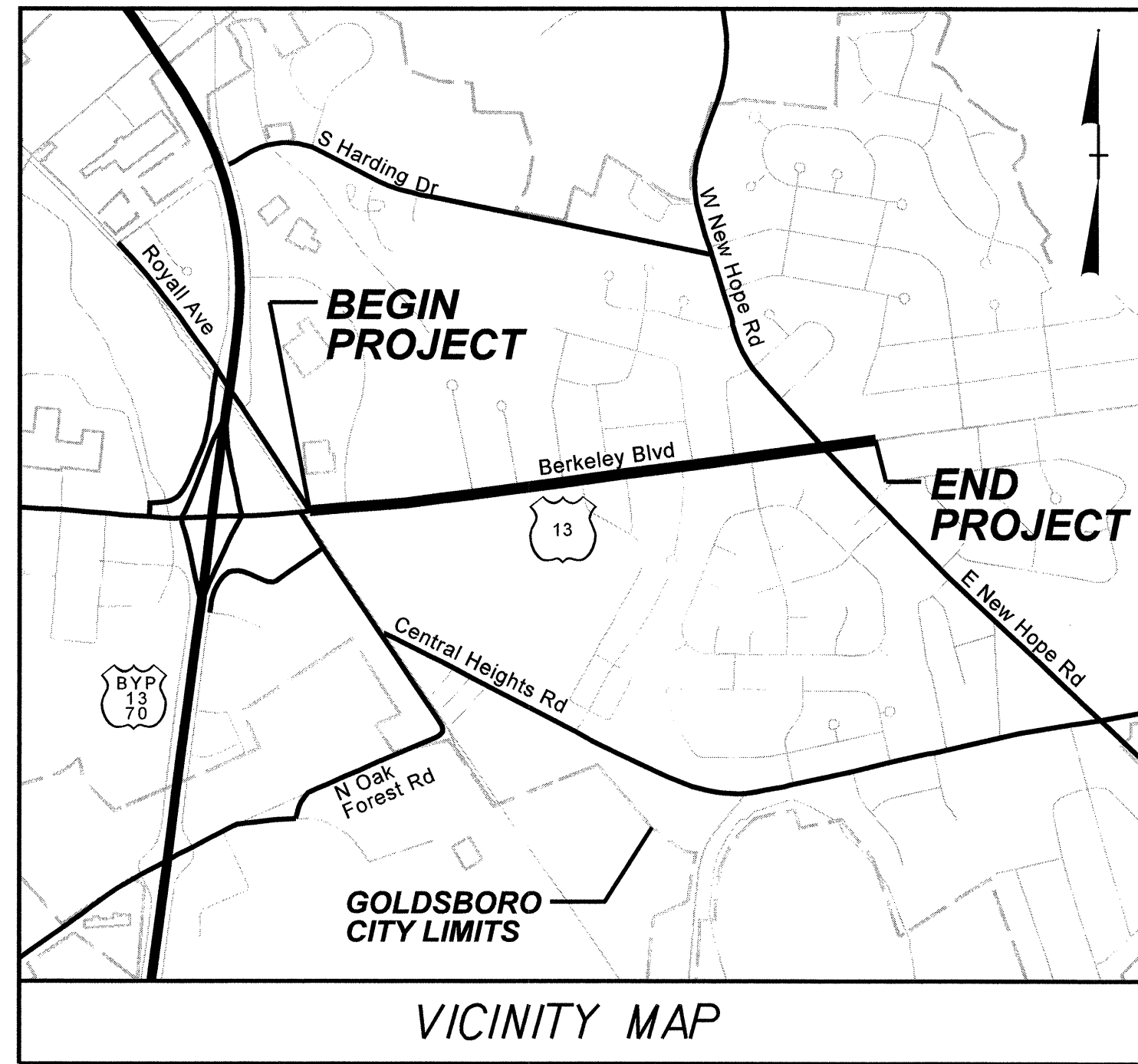
**This file or an individual page
shall not be considered a certified document.**

5/2/2013 K:\PAL_Roadway\01746003 (Berkeley Blvd)\Plan\WaterSewer\01746003_Loc01-A.dgn

TIP PROJECT: U-3609A

CONTRACT: C202603

T.I.P. NO.	SHEET NO.
U-3609A	UC-1

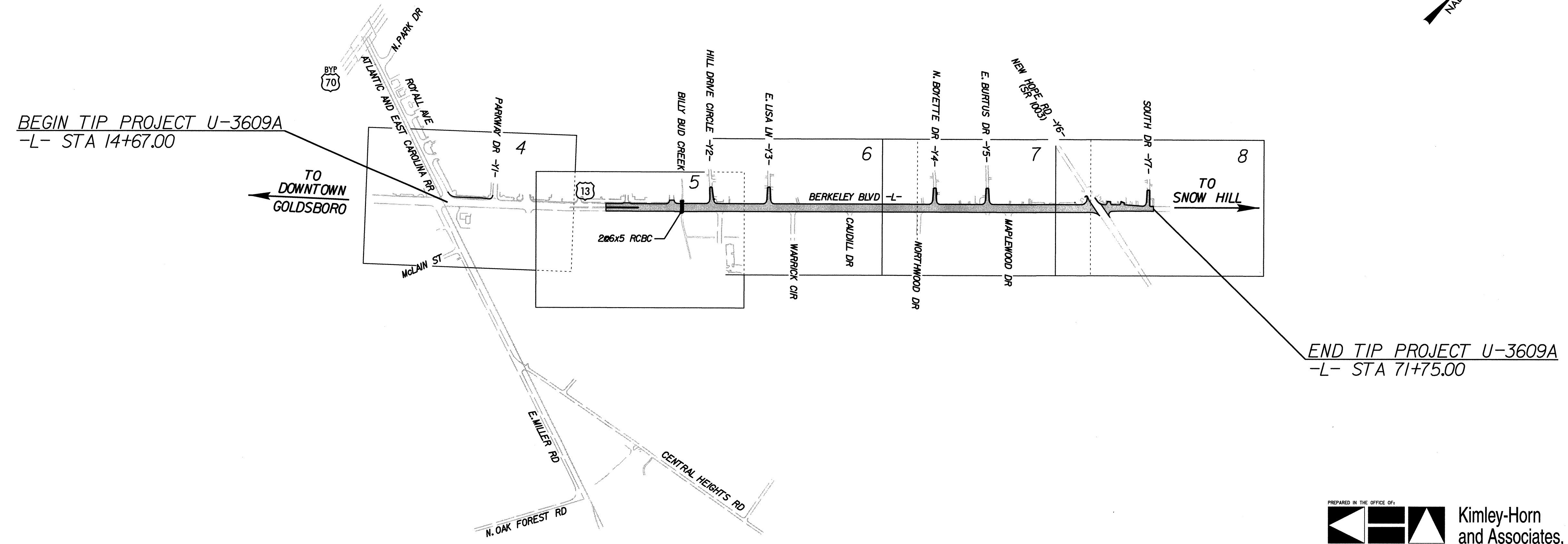
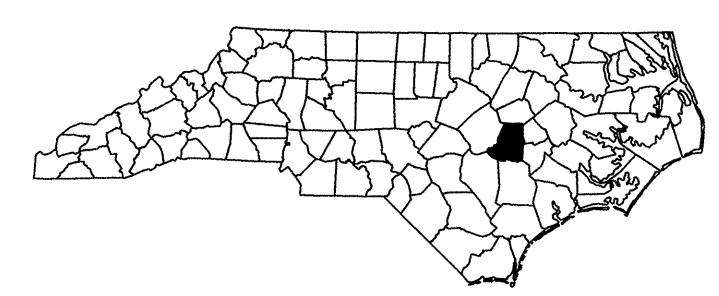


STATE OF NORTH CAROLINA
DIVISION OF HIGHWAYS

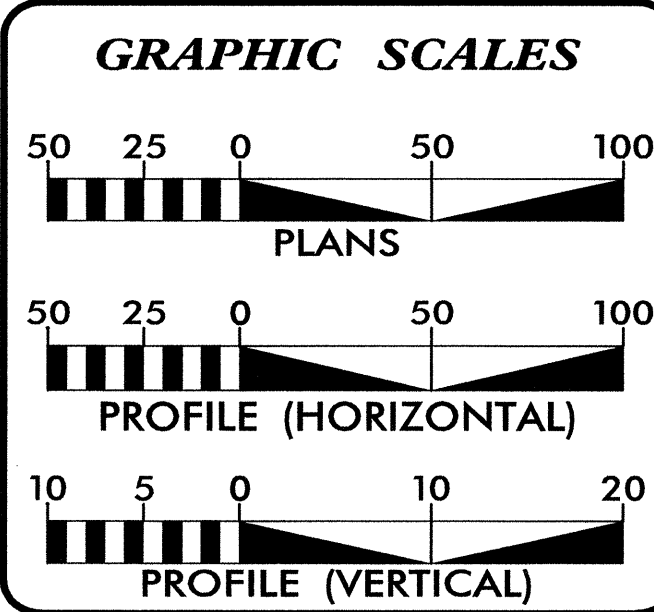
**UTILITY CONSTRUCTION PLANS
WAYNE COUNTY**

**LOCATION: US 13 (BERKELEY BOULEVARD) FROM ROYALL AVENUE
TO SOUTH DRIVE**

TYPE OF WORK: GRADING, DRAINAGE, PAVING AND CULVERT



PREPARED IN THE OFFICE OF:
**Kimley-Horn
and Associates, Inc.**
P.O. BOX 33068 - RALEIGH, NORTH CAROLINA 27636-3068
PHONE: (919) 677-2000 FAX: (919) 677-2050 PE NO. F-0102

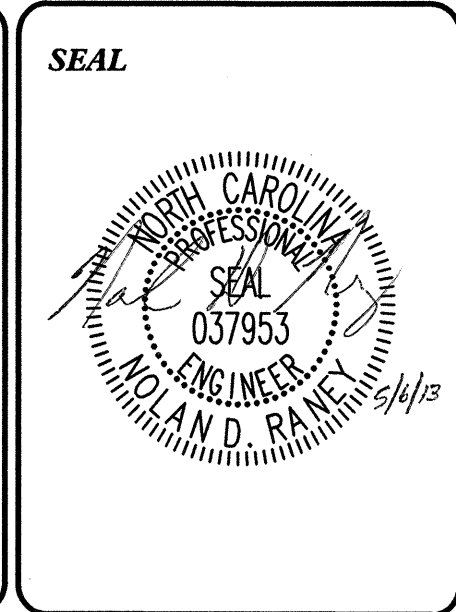


INDEX OF SHEETS

SHEET NO.	DESCRIPTION
UC-1A	TITLE SHEET
UC-1	PLAN SHEET
UC-2	PLAN SHEET
UC-3	PLAN AND PROFILE SHEET
UC-4	PLAN AND PROFILE SHEET
UC-5	PLAN SHEET
UC-6	DETAIL SHEET

WATER AND SEWER OWNERS ON PROJECT

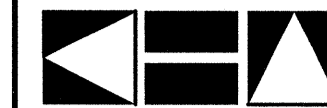
(1) WATER/SEWER - CITY OF GOLDSBORO PUBLIC UTILITIES



PREPARED IN THE OFFICE OF:
**DIVISION OF HIGHWAYS
UTILITIES UNIT
UTILITIES ENGINEERING**

1591 MAIL SERVICES CENTER
RALEIGH NC 27699-1591
PHONE (919) 707-6690
FAX (919) 250-4151

Roger Worthington, P.E. UTILITIES SECTION ENGINEER
Ron Wilkins, P.E. UTILITIES SQUAD LEADER PROJECT ENGINEER



Kimley-Horn
and Associates, Inc.

P.O. BOX 33068
RALEIGH, N.C. 27636-3068

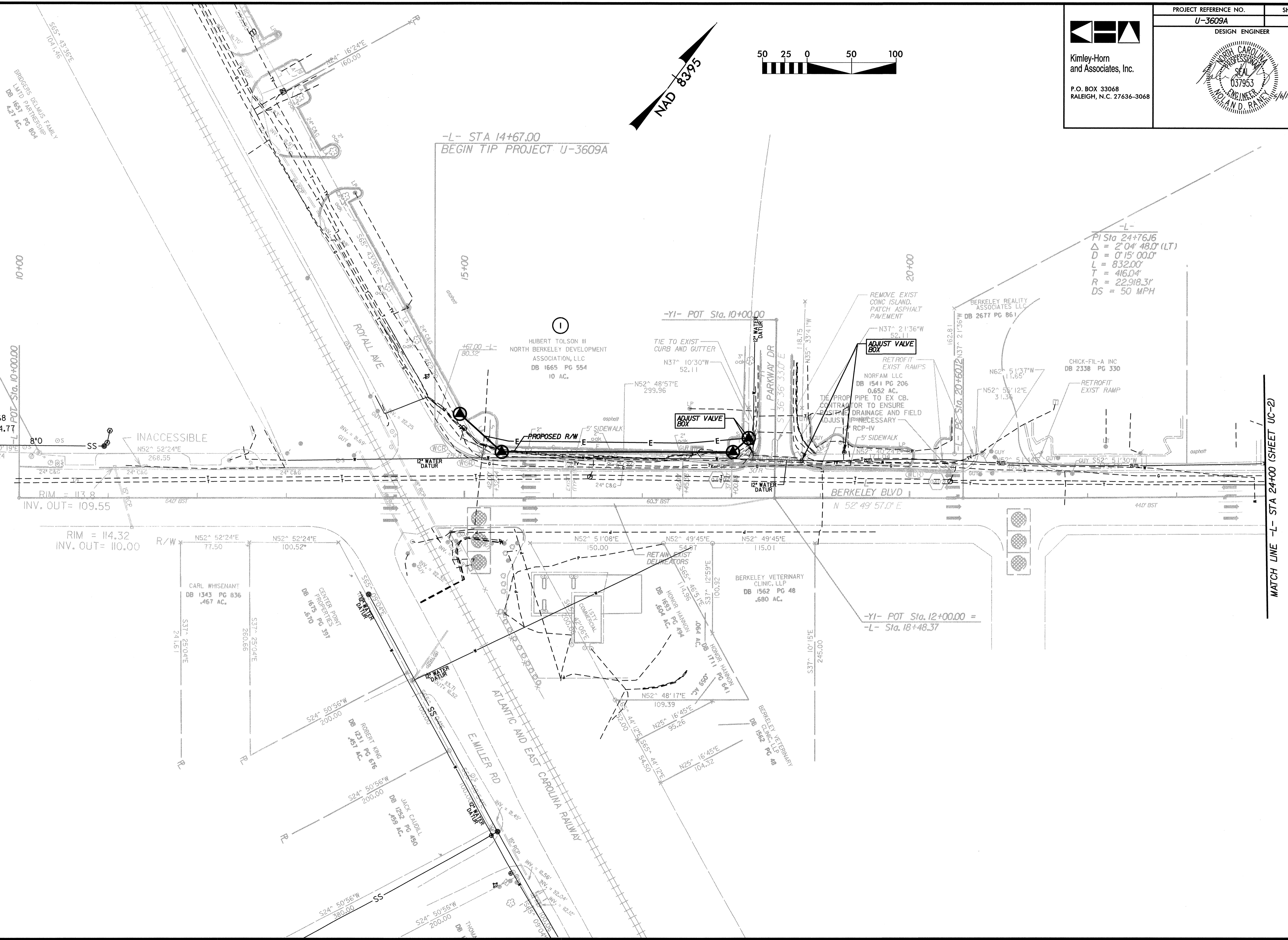


NAD 8395

-L- STA 14+67.00
BEGIN TIP PROJECT U-3609A

-L-
PI Sta 24+76.16
Δ = 2' 04" 48.0" (LT)
D = 0' 15" 00.0"
L = 832.00'
T = 416.04'
R = 22918.31'
DS = 50 MPH

MATCH LINE -L- STA 24+00 (SHEET UC-2)



BRIDGES DELMUS FAMILY
LIMITED PARTNERSHIP
DB 1651 PG 804
4.21 AC.

HUBERT TOLSON III
NORTH BERKELEY DEVELOPMENT
ASSOCIATION, LLC
DB 1665 PG 554
10 AC.

ADJUST VALVE
BOX

REMOVE EXIST
CONC ISLAND.
PATCH ASPHALT
PAVEMENT

RETROFIT
EXIST RAMP
NORFAM LLC
DB 1541 PG 206
0.652 AC.

TIE PROP PIPE TO EX CB.
CONTRACTOR TO ENSURE
EASTSIDE DRAINAGE AND FIELD
ADJUST IF NECESSARY

RETROFIT
EXIST RAMP
CHICK-FIL-A INC
DB 2338 PG 330

INACCESSIBLE
N52° 52' 24"E
268.55

RIM = 113.8
INV. OUT = 109.55

R/W N52° 52' 24"E
77.50

CARL WHESEMAN
DB 1343 PG 836
467 AC.

CENTER POINT
PROPERTIES
DB 1675 PG 391
510

RETAIN EXIST
DELIMITORS

HONOR HANNON
DB 1659 PG 494
504 AC.

BERKELEY VETERINARY
CLINIC, LLP
DB 1562 PG 48
.680 AC.

-YI- POT Sta. 12+00.00 =
-L- Sta. 18+48.37

ROBERT KING
DB 1231 PG 676
451 AC.

JACK CAUDILL
DB 1232 PG 450
459 AC.

HONOR HANNON
DB 1711 PG 641
580 AC.

BERKELEY VETERINARY
CLINIC, LLP
DB 1562 PG 48

K:\N\AL_Roadway\01746003 (Berkeley Blvd)\Plan\Water\Sewer\01746003_Loc01.dgn
5/2/2013

-L-
 PI Sta 24+76.16
 $\Delta = 2' 04" 48.0" (LT)$
 $D = 0' 15" 00.0"$
 $L = 832.00'$
 $T = 416.04'$
 $R = 22,918.3'$
 $DS = 50 MPH$

EXISTING SANITARY SEWER				
SS-1 RIM EL=115.16' INV IN=103.36' INV OUT=103.20'	SS-2 RIM EL=114.82' INV IN=102.92' INV OUT=102.82'	SS-3 RIM IN 103.31 INV. OUT 103.24	SS-4 RIM EL=113.81' INV IN=102.86' INV OUT=102.86'	SS-5 RIM EL=112.96' INV IN=102.76' INV OUT=102.76'
SS-6 RIM EL=113.66' INV IN=102.36' INV OUT=102.34'	SS-7 RIM EL=115.47' INV IN=102.22' INV OUT=102.17'	SS-8 S.S.M.H. RIM 113.55 INV IN 95.45 INV. OUT 95.35	SS-9 RIM EL=115.16' INV IN=95.61' INV IN=95.71' INV OUT=95.51'	SS-10 RIM EL=116.10' INV IN=97.60' INV IN=97.50' INV IN=97.50'
EXISTING STORMDRAIN				
DI-1 RIM EL=113.34' FILLED WITH DIRT	CB-1 RIM EL=115.23' INV IN=109.69' INV OUT=109.69'	CB-2 RIM EL=115.46' INV CL=109.24' INV IN=109.31' INV OUT=109.40'	CB-3 RIM EL=115.47' INV CL=109.25' INV IN=110.40'	



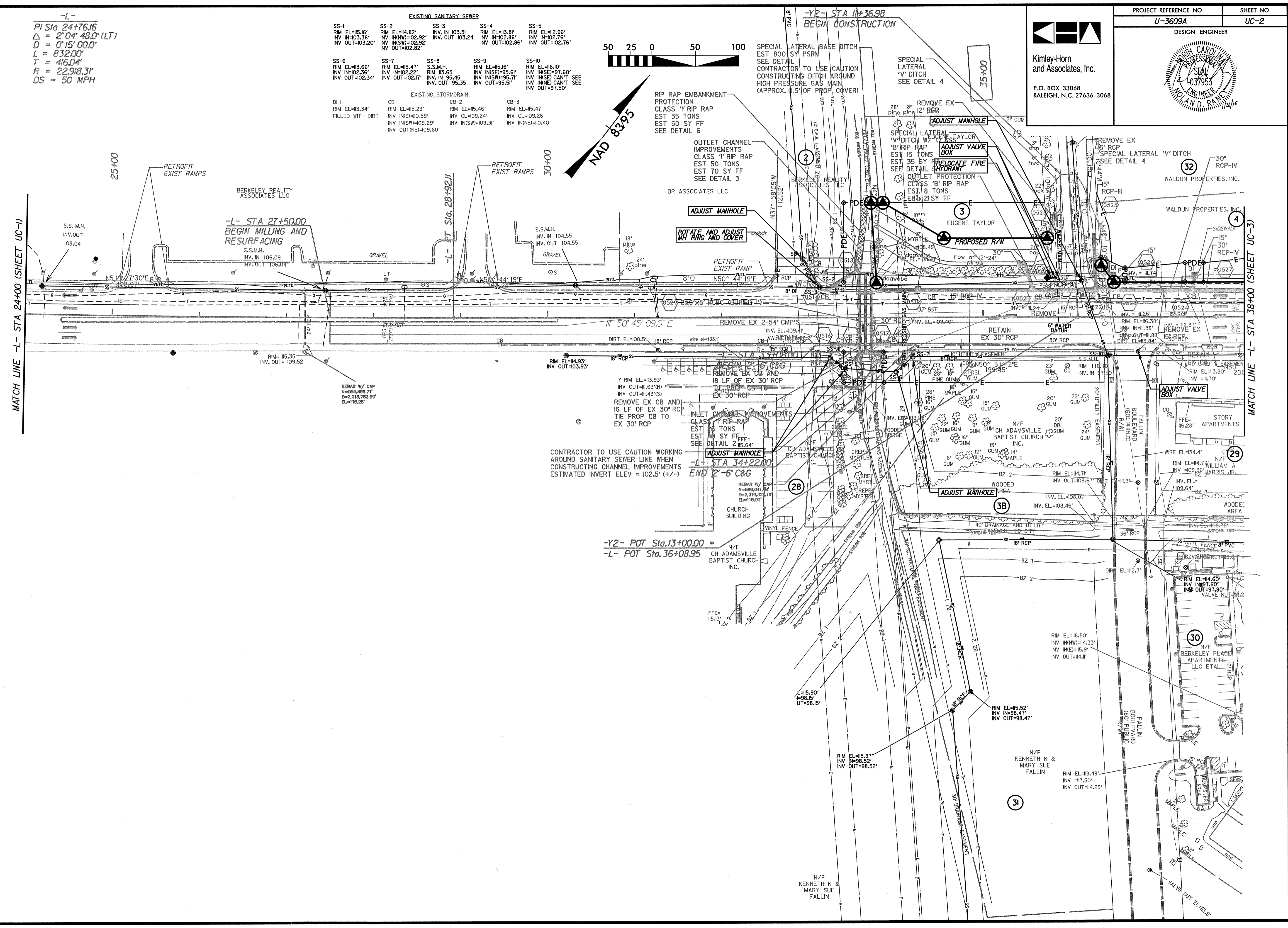
NAD 83 95

-Y2- STA 11+36.98
 BEGIN CONSTRUCTION



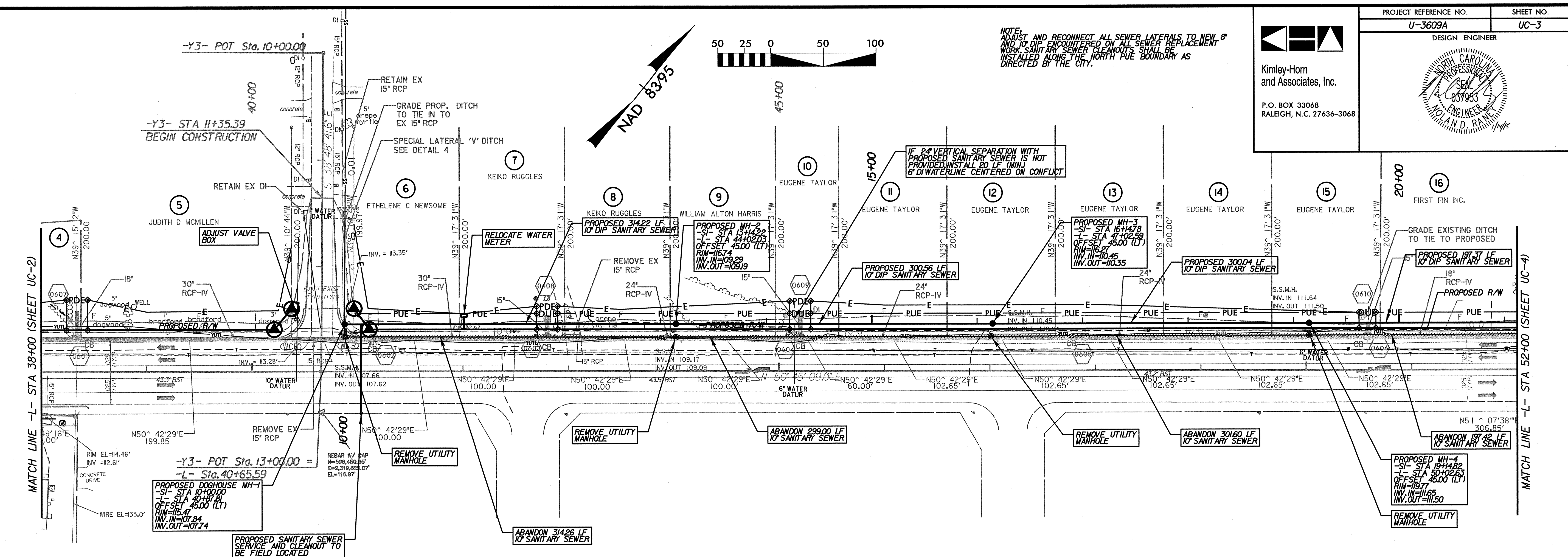
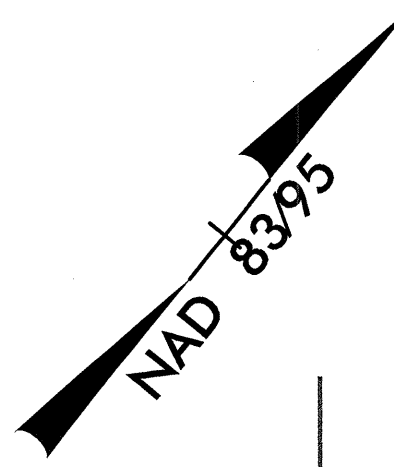
Kimley-Horn
 and Associates, Inc.
 P.O. BOX 33068
 RALEIGH, N.C. 27636-3068

PROJECT REFERENCE NO. U-3609A	SHEET NO. UC-2
DESIGN ENGINEER	



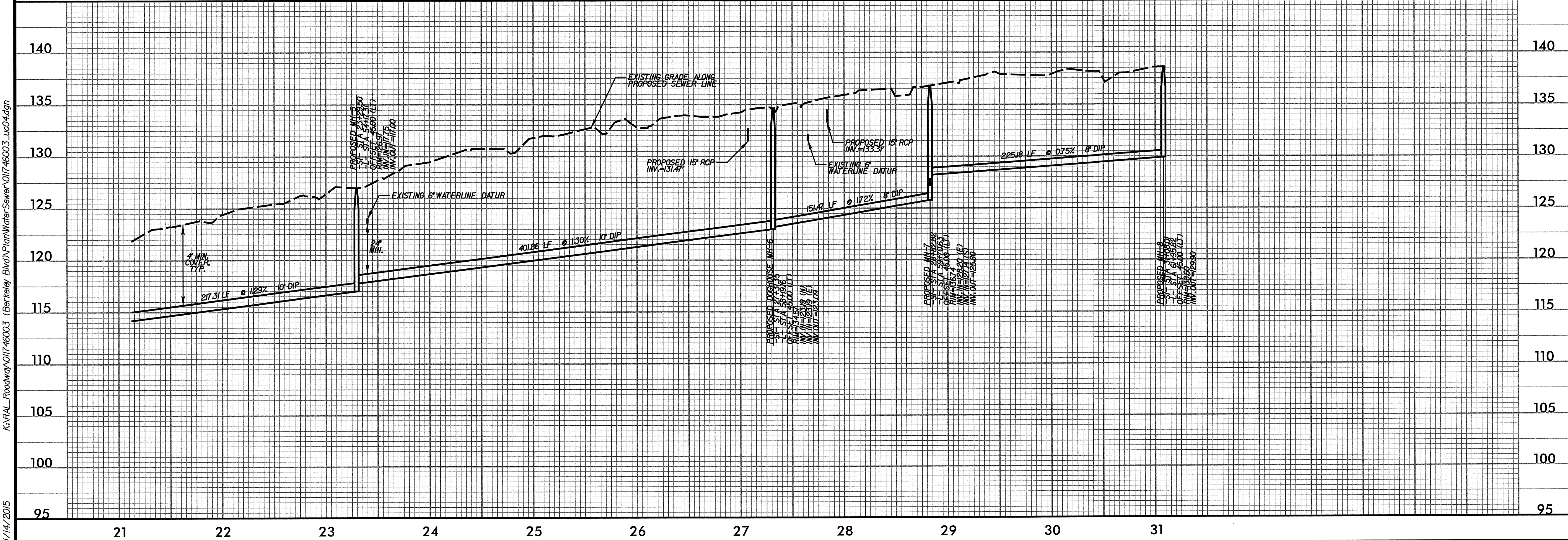
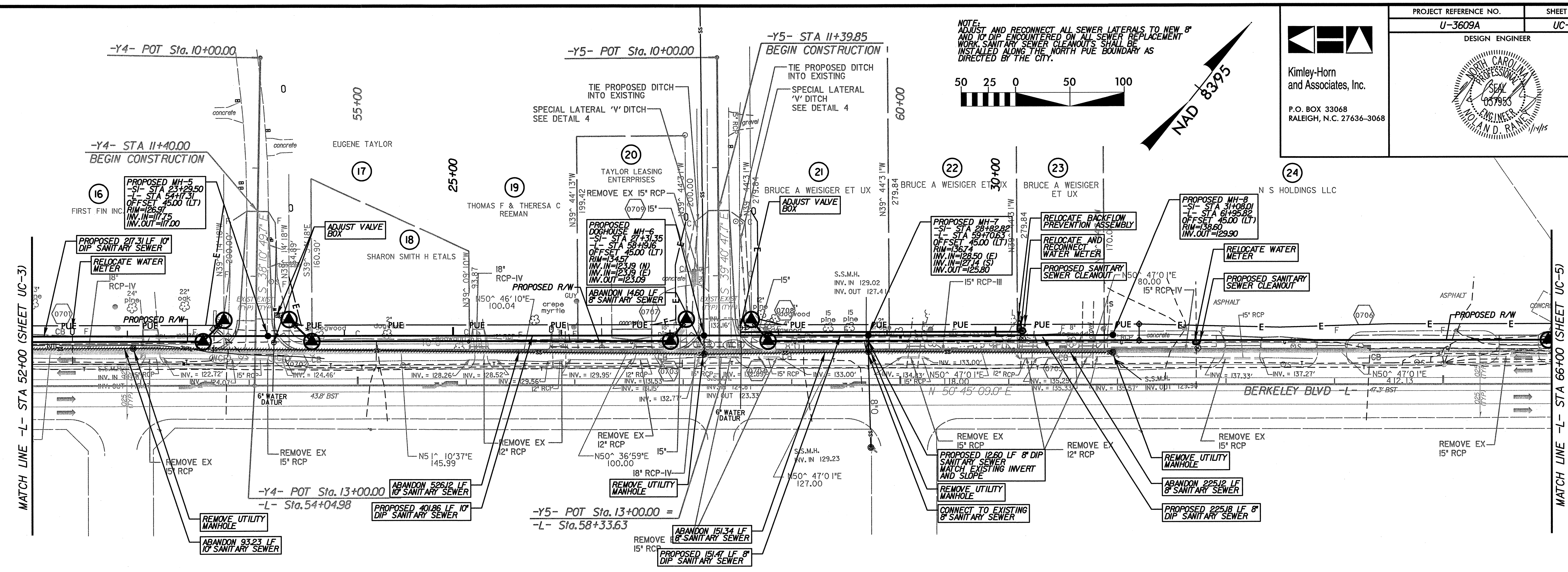
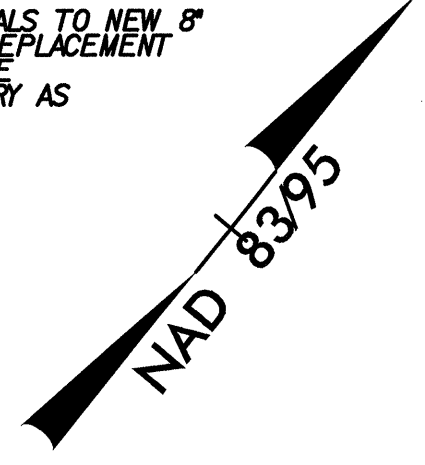
K:\RAL_Roadway\01746003 (Berkeley Blvd)\Plan\Water Sewer\01746003 UC02.dgn
 1/26/2015

NOTE:
 ADJUST AND RECONNECT ALL SEWER LATERALS TO NEW 8" AND 10" DIP ENCOUNTERED ON ALL SEWER REPLACEMENT WORK. SANITARY SEWER CLEANOUTS SHALL BE INSTALLED ALONG THE NORTH PUE BOUNDARY AS DIRECTED BY THE CITY.



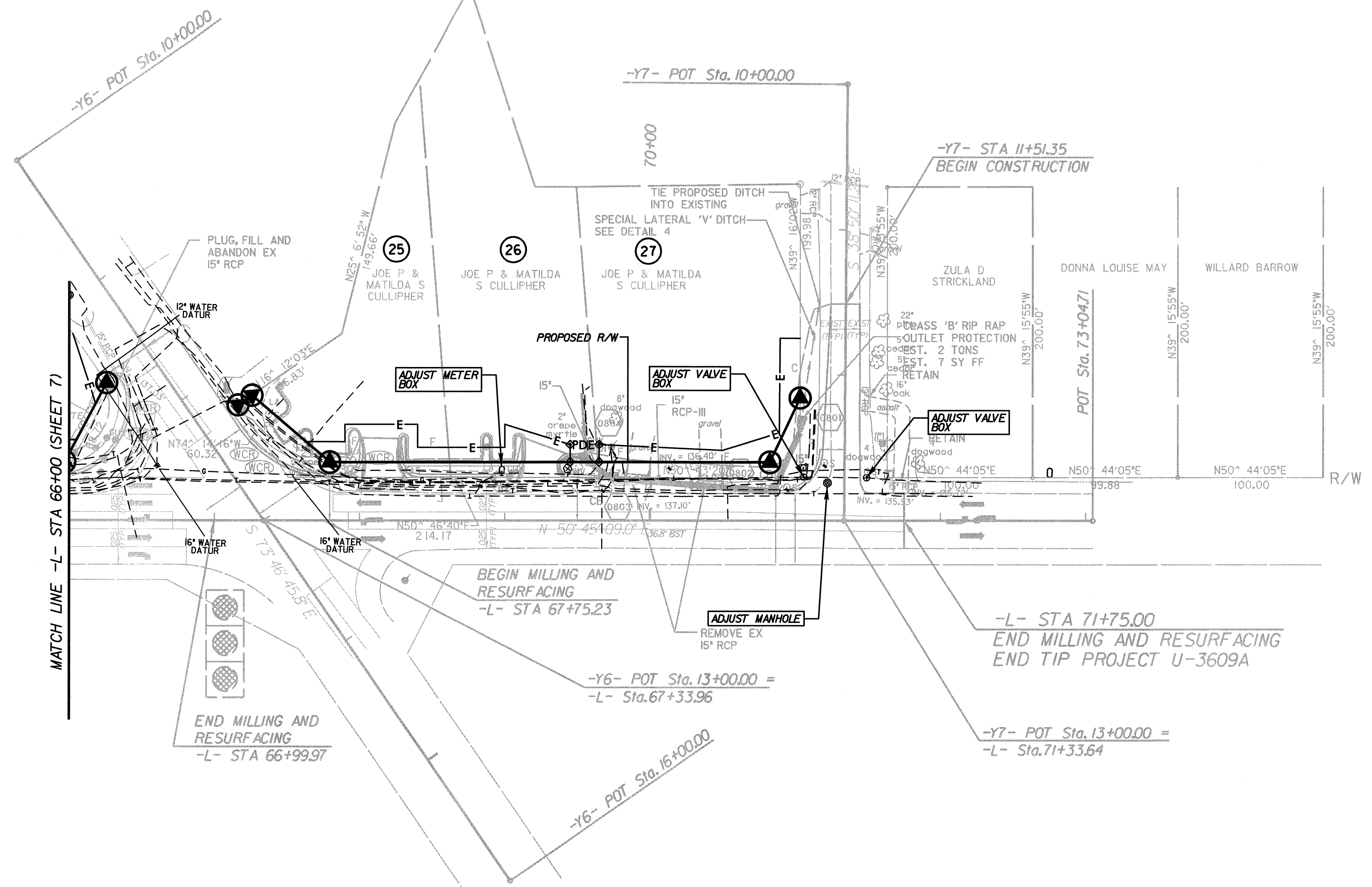
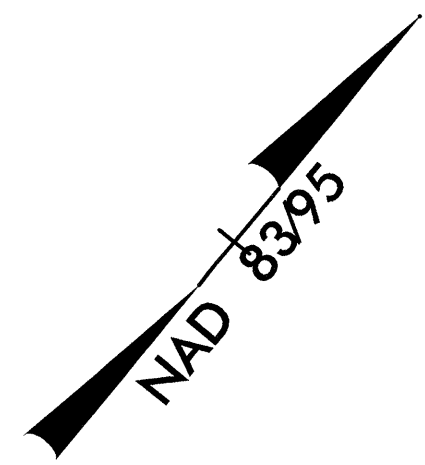
K:\RAL_Roadway\011746003 (Berkeley Blvd)\Plan\WaterSewer\011746003_UC03.dgn
 1/14/2015

NOTE:
 ADJUST AND RECONNECT ALL SEWER LATERALS TO NEW 8" AND 10" DIP ENCOUNTERED ON ALL SEWER REPLACEMENT WORK. SANITARY SEWER CLEANOUTS SHALL BE INSTALLED ALONG THE NORTH PUE BOUNDARY AS DIRECTED BY THE CITY.

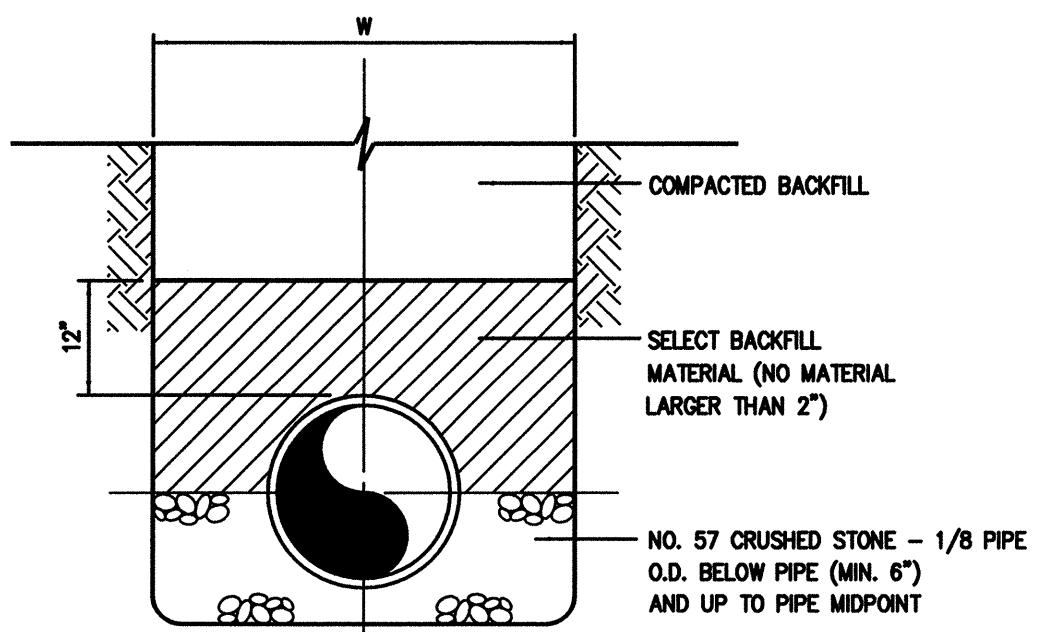


K:\PAL_Roadway\01746003 (Berkeley Blvd)\Plan\WaterSewer\01746003 UC-4.dgn
 1/14/2015

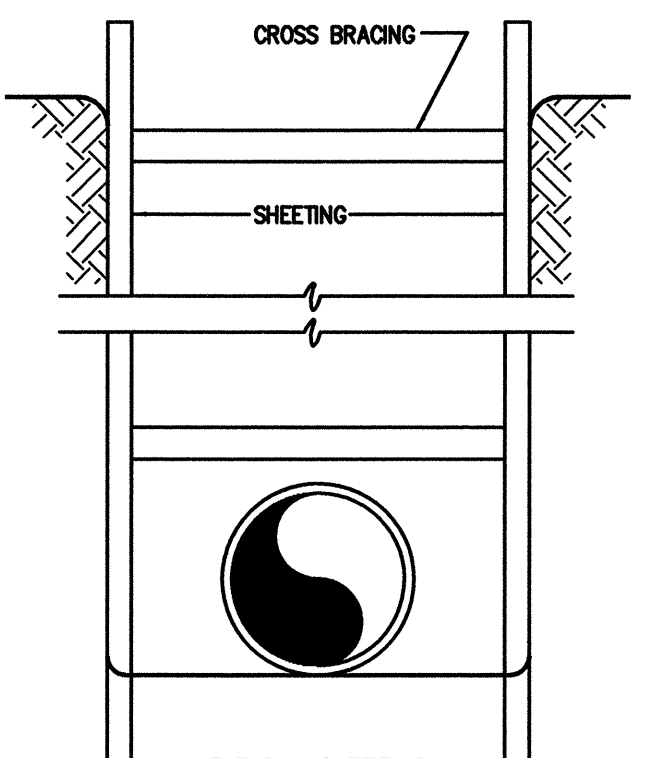
Kimley-Horn
and Associates, Inc.
P.O. BOX 33068
RALEIGH, N.C. 27636-3068



K:\RAL_Roadway\01746003 (Berkeley Blvd)\Plan\Water\Sewer\01746003_uc05.dgn 5/2/2013



TYPE B
0222102

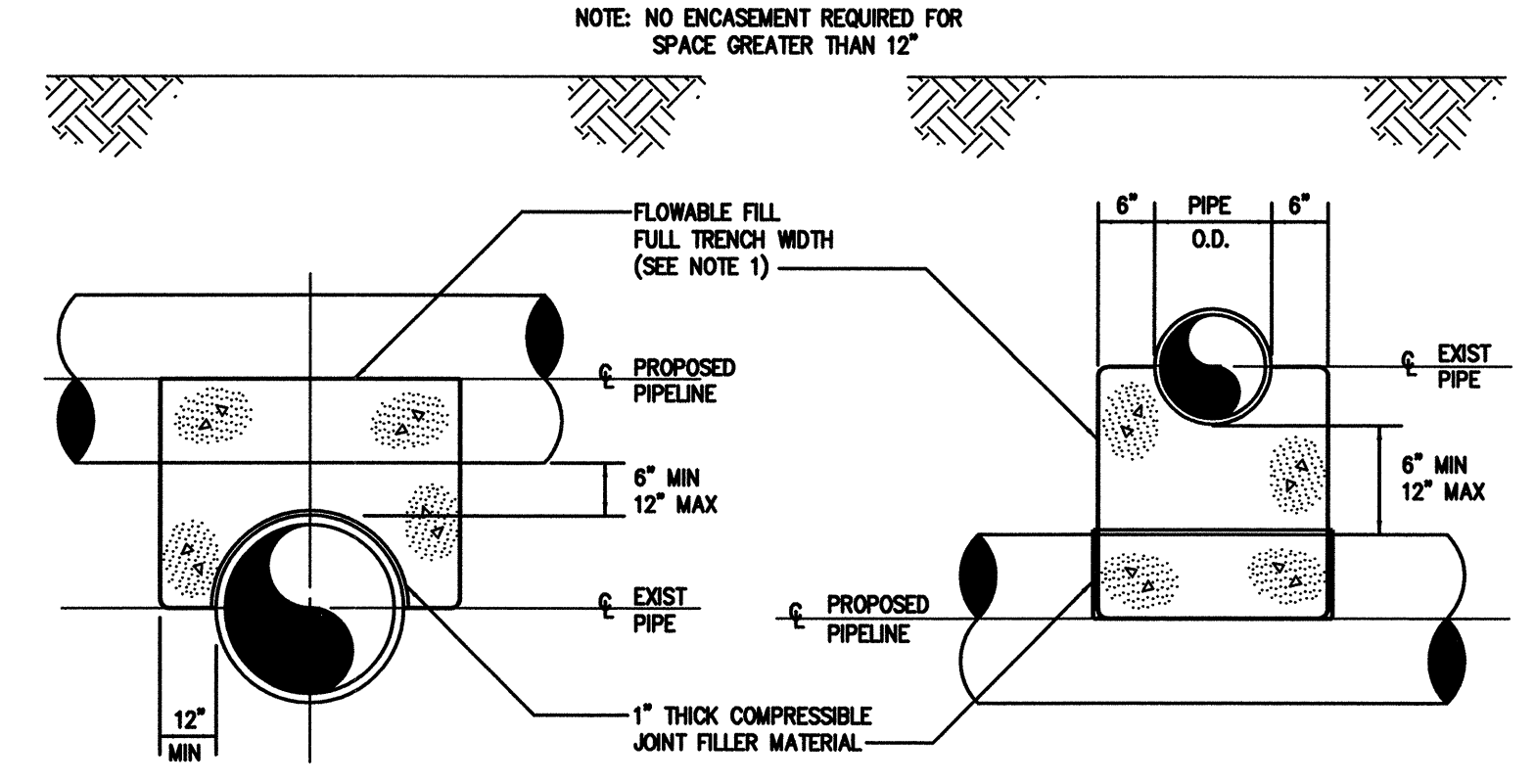


TYPICAL SHEETING
0222121

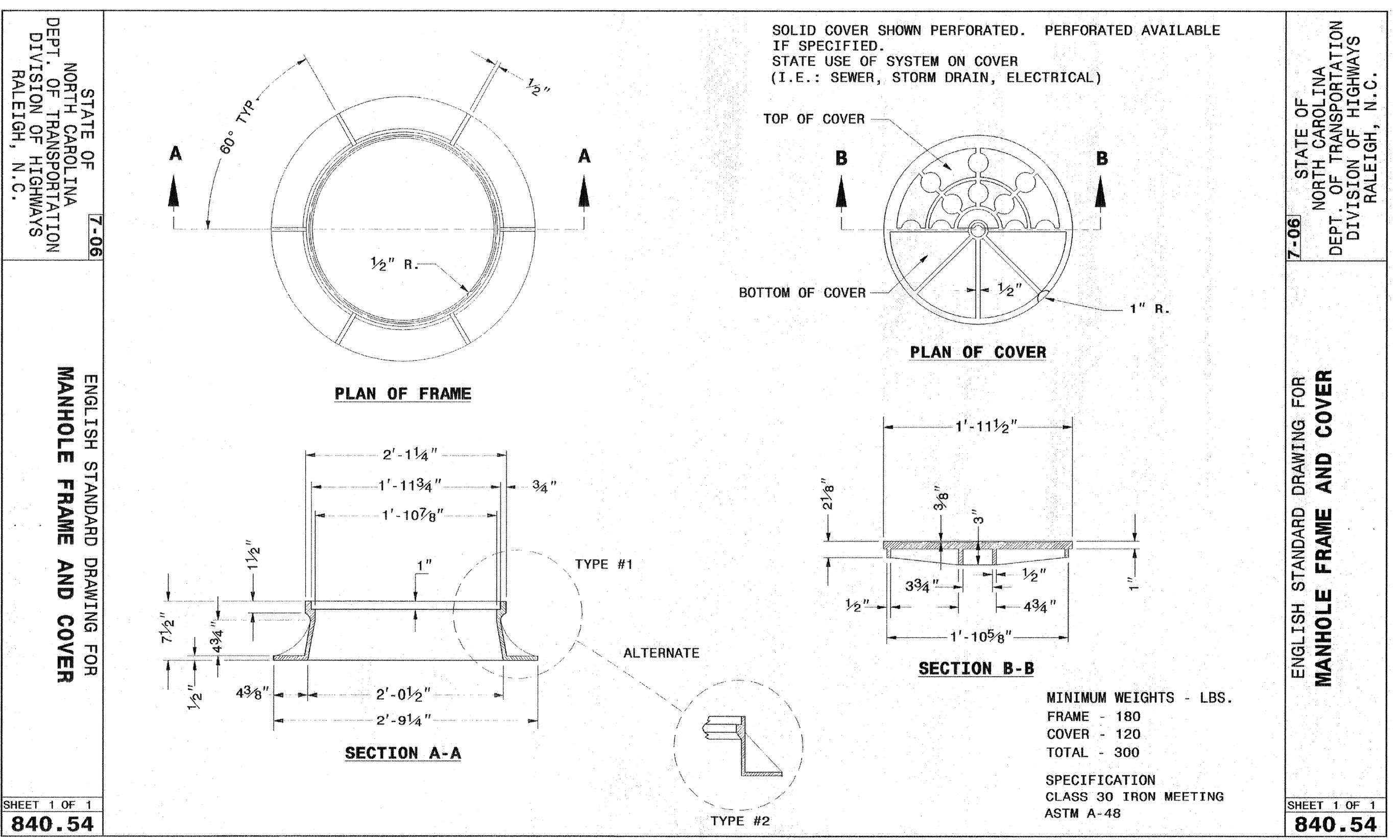
INTERNAL DIAMETER OF PIPE	WIDTH OF TRENCH	
	MAX	W-MIN
4'-6"	3'-9"	2'-0"
8'-10"	3'-9"	2'-2"
12"	3'-9"	O.D.+2"
14'-18"	4'-2"	O.D.+2"
18"	4'-4"	O.D.+2"
20'-21"	4'-8"	O.D.+2"
24"	4'-11"	O.D.+2"
27"	5'-9"	O.D.+2"
30"	6'-7"	O.D.+2"
36"	7'-4"	O.D.+2"
42"	8'-2"	O.D.+2"
48"	8'-9"	O.D.+2"
54"	9'-4"	O.D.+2"
60"	9'-10"	O.D.+2"
72"	11'-0"	O.D.+2"
78"	11'-8"	O.D.+2"
84"	12'-0"	O.D.+2"
90"	12'-6"	O.D.+2"
96"	13'-0"	O.D.+2"
108"	14'-0"	O.D.+2"
DEPTH OF CUT	S MAXIMUM PAVEMENT REPLACEMENT WIDTH	
	S	S
0'-6"	S=W+4"	S
>6'-8"	S=W+8"	S
>8'-10"	S=W+12"	S
>10'-12"	S=W+16"	S
>12'-14"	S=W+20"	S
>14'-16"	S=W+24"	S
>16'-18"	S=W+28"	S
>18"	S=W+32"	S

W = TRENCH WIDTH AT BOTTOM OF PIPE. TRENCH SIDE SLOPES SHALL BE IN ACCORDANCE WITH OSHA REQUIREMENTS.

0222110

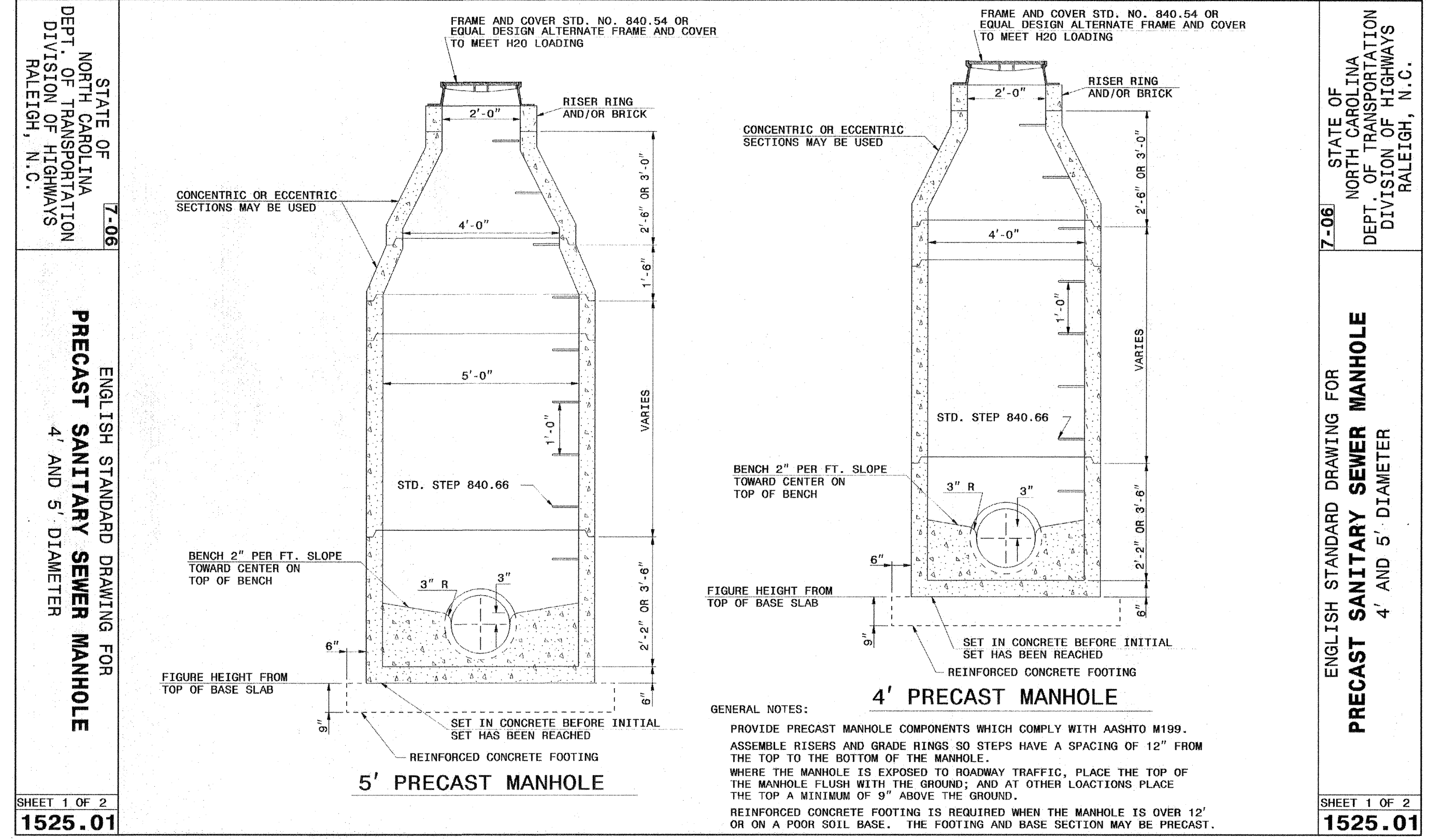


PROPOSED PIPELINE OVER EXIST PIPE
0222118
PROPOSED PIPELINE UNDER EXIST PIPE



SHEET 1 OF 1
840.54

STATE OF NORTH CAROLINA DEPT. OF TRANSPORTATION DIVISION OF HIGHWAYS RALEIGH, N.C.
 ENGLISH STANDARD DRAWING FOR MANHOLE FRAME AND COVER
 SHEET 1 OF 1
840.54



SHEET 1 OF 2
1525.01

STATE OF NORTH CAROLINA DEPT. OF TRANSPORTATION DIVISION OF HIGHWAYS RALEIGH, N.C.
 ENGLISH STANDARD DRAWING FOR PRECAST SANITARY SEWER MANHOLE 4' AND 5' DIAMETER
 SHEET 1 OF 2
1525.01

MANHOLE NUMBER	NORTHING	EASTING	DIAMETER (FT)	WIDTH OF EXTENDED BASE (MIN)	TYPE OF COVER	VENT PIPE REQUIRED	ELEV OF VENT PIPE	INSIDE AND OUTSIDE STEPS REQD	CONCRETE BALLAST REQD(CY)	INTERIOR PAINTED	EXPOSED EXTERIOR PAINTED
MH NO. 1	596527.6904	2319789.9365	4'	0.5'	STANDARD	NO	----	YES	----	YES	NO
MH NO. 2	596726.4810	2320033.2657	4'	0.5'	STANDARD	NO	----	YES	----	YES	NO
MH NO. 3	596915.6495	2320264.8171	4'	0.5'	STANDARD	NO	----	YES	----	YES	NO
MH NO. 4	597106.4653	2320498.3849	4'	0.5'	STANDARD	NO	----	YES	----	YES	NO
MH NO. 5	597368.8203	2320819.5201	4'	0.5'	STANDARD	NO	----	YES	----	YES	NO
MH NO. 6	597623.0921	2321130.7609	4'	0.5'	STANDARD	NO	----	YES	----	YES	NO
MH NO. 7	597718.9366	2321248.0792	4'	0.5'	STANDARD	NO	----	YES	----	YES	NO
MH NO. 8	597861.3608	2321422.4133	4'	0.5'	STANDARD	NO	----	YES	----	YES	NO

NOTE: PROVIDE 8" MIN. COMPACTED CRUSHED STONE, NCDOT NO. 57 BENEATH BASE OF EACH MANHOLE.