

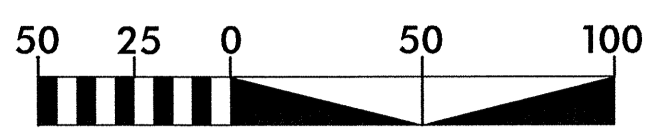
-L-  
 PI Sta 24+76.16  
 $\Delta = 2' 04" 48.0" (LT)$   
 $D = 0' 15" 00.0"$   
 $L = 832.00'$   
 $T = 416.04'$   
 $R = 22,918.3'$   
 $DS = 50 \text{ MPH}$

EXISTING SANITARY SEWER

SS-1 RIM EL=115.16' INV IN=103.36' INV OUT=103.20'	SS-2 RIM EL=114.82' INV IN=102.92' INV OUT=102.82'	SS-3 RIM IN 103.31' INV. OUT 103.24'	SS-4 RIM EL=113.81' INV IN=102.86' INV OUT=102.86'	SS-5 RIM EL=112.96' INV IN=102.76' INV OUT=102.76'
SS-6 RIM EL=113.66' INV IN=102.36' INV OUT=102.34'	SS-7 RIM EL=115.47' INV IN=102.22' INV OUT=102.17'	SS-8 S.S.M.H. RIM IN 113.55' INV IN 95.45' INV. OUT 95.35'	SS-9 RIM EL=115.16' INV IN=95.61' INV IN=95.71' INV OUT=95.51'	SS-10 RIM EL=116.10' INV IN=97.60' INV IN=97.50' INV IN=97.50'

EXISTING STORMDRAIN

DI-1 RIM EL=113.34' FILLED WITH DIRT	CB-2 RIM EL=115.23' INV IN=109.59' INV IN=109.69' INV OUT=109.69'	CB-3 RIM EL=115.47' INV CL=109.26' INV IN=110.40'
--	---	--

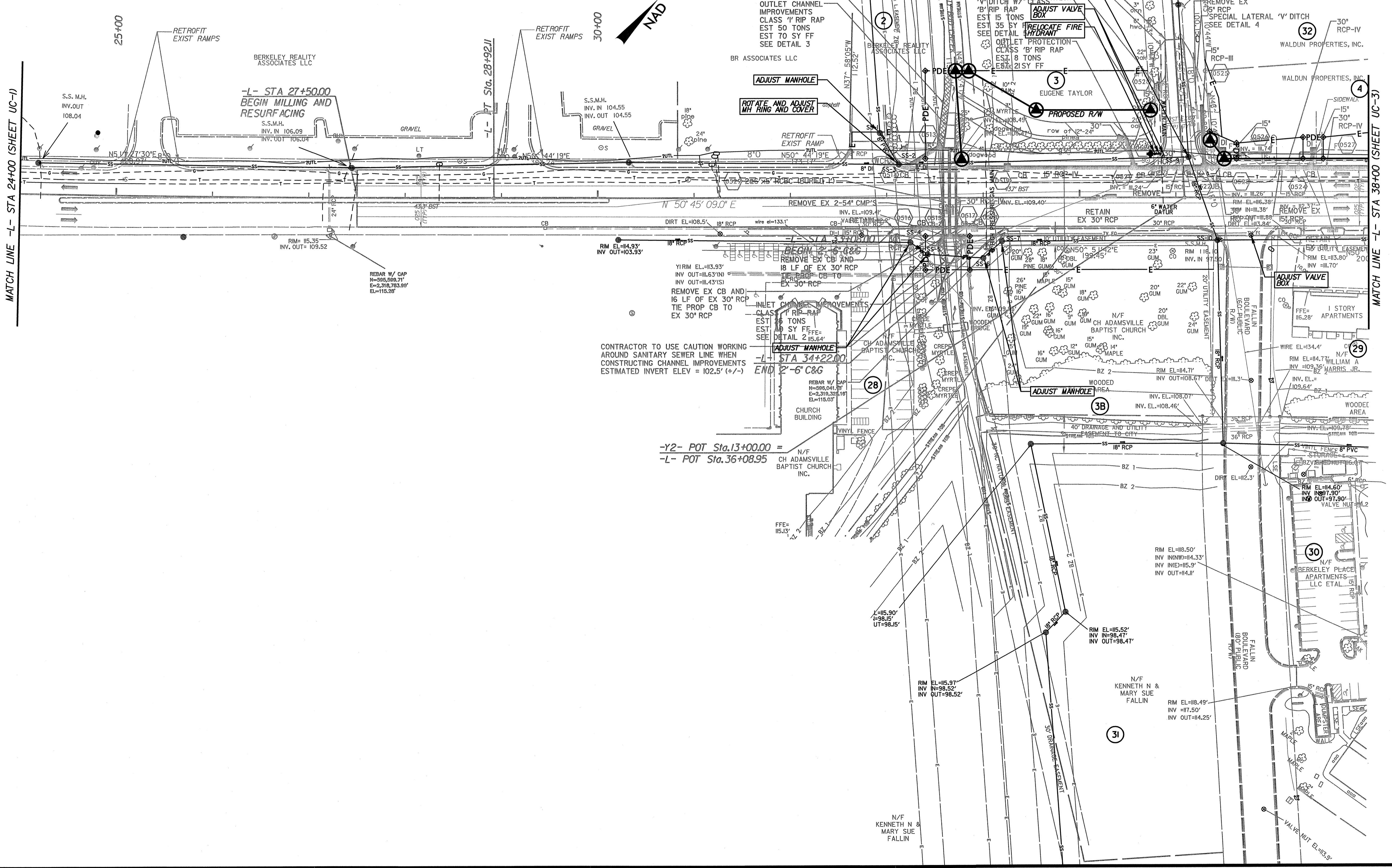


NAD 83 95

-Y2- STA 11+36.98  
 BEGIN CONSTRUCTION

Kimley-Horn  
 and Associates, Inc.  
 P.O. BOX 33068  
 RALEIGH, N.C. 27636-3068

PROJECT REFERENCE NO. U-3609A	SHEET NO. UC-2
DESIGN ENGINEER	



MATCH LINE -L- STA 24+00 (SHEET UC-1)

MATCH LINE -L- STA 38+00 (SHEET UC-3)

K:\RAL\_Roadway\01746003 (Berkeley Blvd)\Plan\Water Sewer\01746003 UC02.dgn 1/26/2015