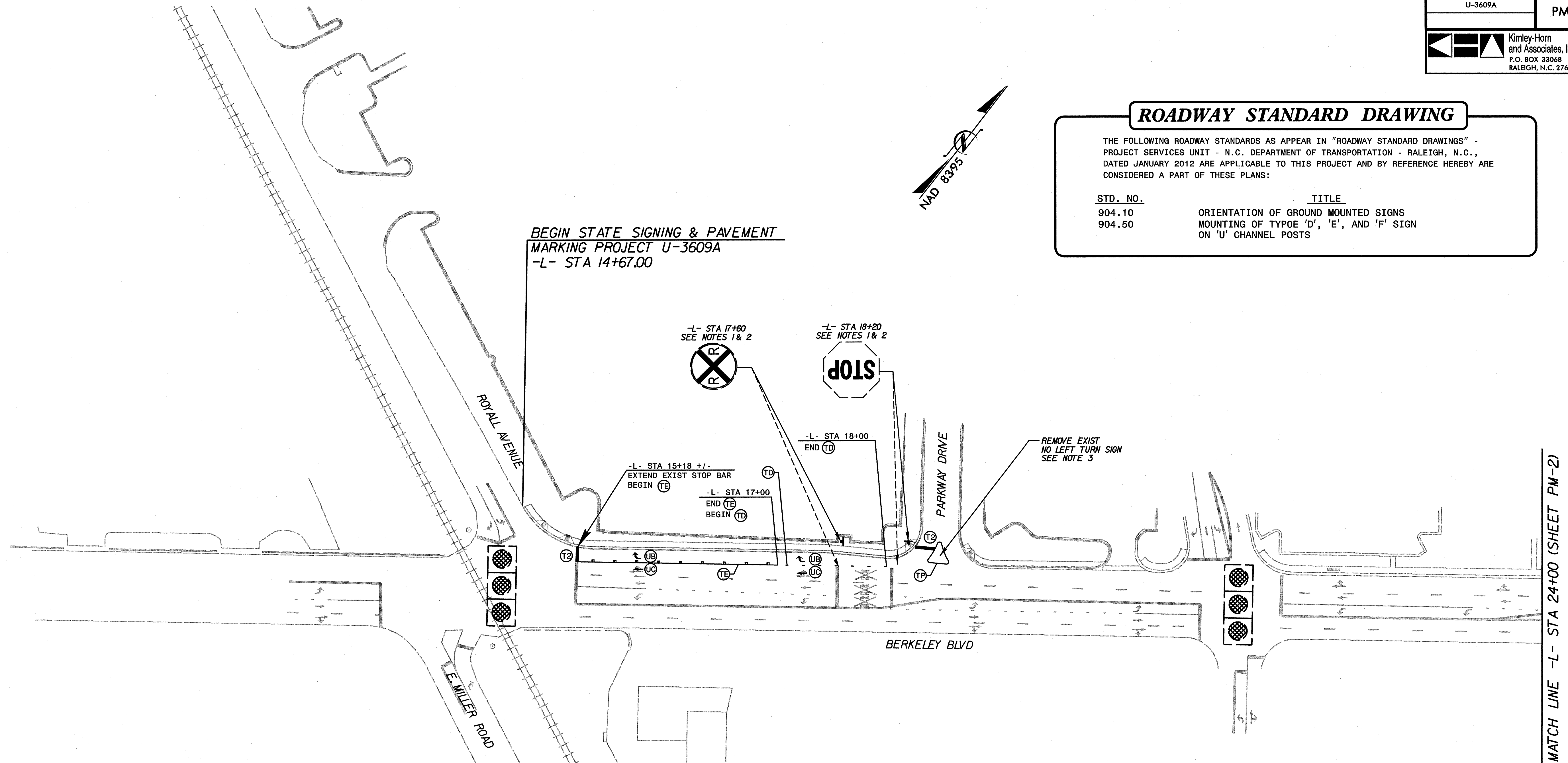


ROADWAY STANDARD DRAWING

THE FOLLOWING ROADWAY STANDARDS AS APPEAR IN "ROADWAY STANDARD DRAWINGS" - PROJECT SERVICES UNIT - N.C. DEPARTMENT OF TRANSPORTATION - RALEIGH, N.C., DATED JANUARY 2012 ARE APPLICABLE TO THIS PROJECT AND BY REFERENCE HEREBY ARE CONSIDERED A PART OF THESE PLANS:

STD. NO.	TITLE
904.10	ORIENTATION OF GROUND MOUNTED SIGNS
904.50	MOUNTING OF TYPE 'D', 'E', AND 'F' SIGN ON 'U' CHANNEL POSTS



PAVEMENT MARKING LINES

TA - THERMOPLASTIC (4" WHITE, 90 MILS)	EDGE LINE
TC - THERMOPLASTIC (4" WHITE, 120 MILS)	4" x 10' SKIP
TD - THERMOPLASTIC (4" WHITE, 120 MILS)	3' x 9' WHITE MINISKIP
TE - THERMOPLASTIC (4" WHITE, 120 MILS)	SOLID LANE LINE
TF - THERMOPLASTIC (4" YELLOW, 120 MILS)	10' YELLOW SKIP LINE
TH - THERMOPLASTIC (4" YELLOW, 120 MILS)	SINGLE CENTER LINE
TI - THERMOPLASTIC (4" YELLOW, 120 MILS)	DOUBLE CENTER LINE
TK - THERMOPLASTIC (8" WHITE, 120 MILS)	"WIDE" 3' x 9' WHITE MINISKIP
TL - THERMOPLASTIC (8" WHITE, 120 MILS)	"WIDE" SOLID LANE LINE
TP - THERMOPLASTIC (8" WHITE, 90 MILS)	GORELINE
T2 - THERMOPLASTIC (24" WHITE, 120 MILS)	STOP BAR

PAVEMENT MARKING SYMBOLS

UA - THERMOPLASTIC (LEFT TURN ARROW, 90 MILS)
UB - THERMOPLASTIC (RIGHT TURN ARROW, 90 MILS)
UC - THERMOPLASTIC (STRAIGHT ARROW, 90 MILS)
UD - THERMOPLASTIC (COMBINATION, STRAIGHT & LEFT TURN ARROW, 90 MILS)
UE - THERMOPLASTIC (COMBINATION, STRAIGHT & RIGHT TURN ARROW, 90 MILS)
UI - THERMOPLASTIC (ALPHANUMERIC CHARACTER, 120 MILS)
US - THERMOPLASTIC ('SHARK TEETH' YIELD LINE, 90 MILS)

PAVEMENT MARKER LEGEND

- CRYSTAL / RED PAVEMENT MARKER
- ◆ YELLOW / YELLOW PAVEMENT MARKER
- ← DIRECTION OF TRAFFIC FLOW

SIGNING AND PAVEMENT MARKING NOTES:

- ALL PAVEMENT MARKINGS SHALL BE THERMOPLASTIC.
- CONTRACTOR SHALL TIE PROPOSED MARKINGS TO EXISTING MARKINGS AT PROJECT LIMITS.
- CONTRACTOR SHALL MILL ANY EXISTING MARKINGS IN CONFLICT WITH PROPOSED.
- DO NOT PLACE PAVEMENT MARKINGS ON CROSSWALKS.
- RAISED REFLECTIVE PAVEMENT MARKERS ARE TO BE PLACED ACCORDING TO NCDOT ROADWAY STANDARD DRAWINGS.
- REMOVE AND RESET EXISTING STREET SIGNS.


PAY ITEM NOTES:

- DISPOSAL OF SUPPORT, U-CHANNEL
- SIGN ERECTION, RELOCATE TYPE "E" (GROUND MOUNTED)
- DISPOSAL OF SIGN SYSTEM, U-CHANNEL

SUMMARY OF QUANTITIES

ITEM NO.	ITEM DESCRIPTION	QUANTITY	UNIT
4072000000	SUPPORTS, 3-LB STEEL U-CHANNEL	220	LF
4116100000	SIGN ERECTION, RELOCATE TYPE E (GROUND MOUNTED)	17	EA
4155000000	DISPOSAL OF SIGN SYSTEM, U-CHANNEL	1	EA
4192000000	DISPOSAL OF SUPPORT, U-CHANNEL	14	EA

SHEET 1 OF 4

APPROVED: _____	DATE: _____
	
SEAL	
5/4/13	
PAVEMENT MARKING AND SIGNING PLAN	
SCALE: 1" = 50'	REVISIONS
DATE: 06-11-12	
DWG. BY: DAS	
DESIGN BY: JJP	
REVIEWED BY: CAN	CADD FILE

K:\RAL_Roadway\01746003 (Berkeley Blvd)\Plan\TCP\01746003_PM.dgn

5/1/2013