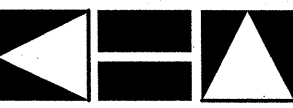
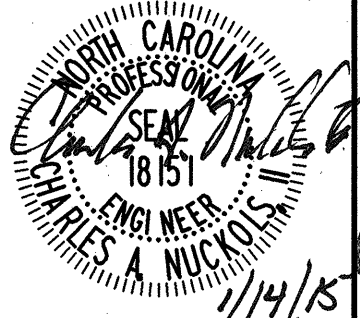
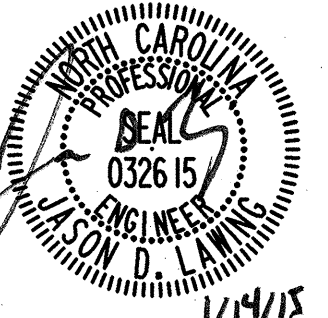
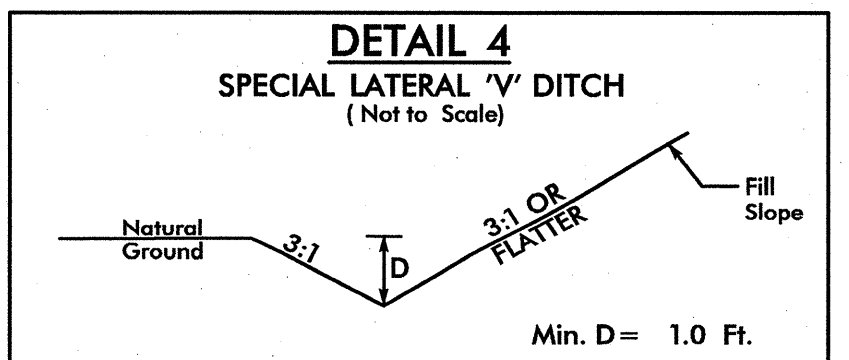
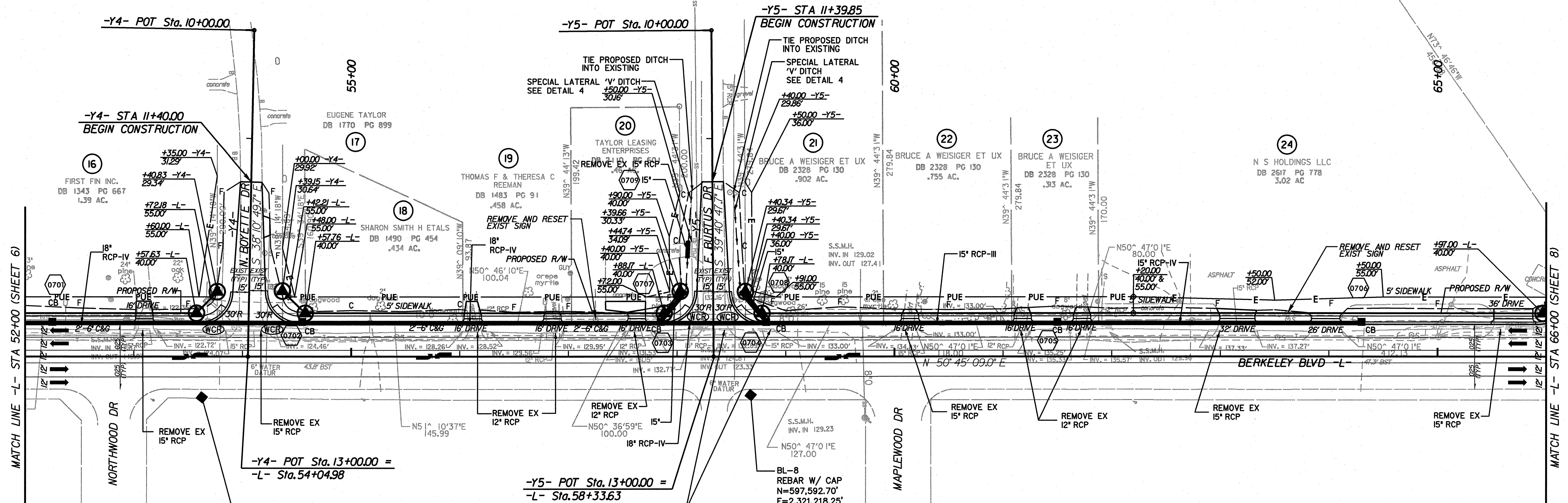


|   |  |                     |
|---|--|---------------------|
| <br>Kimley-Horn<br>and Associates, Inc.<br>P.O. BOX 33068<br>RALEIGH, N.C. 27636-3068<br>RIGHT-OF-WAY REV.<br>CONST. REV. | PROJECT REFERENCE NO.<br>U-3609A   | SHEET NO.<br>7      |
|   | R/W SHEET NO.  | HYDRAULICS ENGINEER |
| ROADWAY DESIGN ENGINEER   | <br>THOMAS A. NUCKOLLS<br>PROFESSIONAL ENGINEER<br>18151<br>1/14/15 |                     |
|   | <br>JASON D. LANNING<br>PROFESSIONAL ENGINEER<br>032615<br>1/14/15  |                     |



FROM STA. 11+39.66 TO STA. 12+39.14 -Y5- (RT)  
 FROM STA. 11+36.66 TO STA. 12+39.85 -Y5- (LT)

K:\RAL\_Roadway\011746003 (Berkeley Blvd)\Plan\011746003\_psh1.dgn

1/14/2015

SEE SHEET NO.9 FOR -Y4- AND -Y5- PROFILES