

**This electronic collection of documents is provided
for the convenience of the user
and is Not a Certified Document –**

**The documents contained herein were originally issued
and sealed by the individuals whose names and license
numbers appear on each page, on the dates appearing
with their signature on that page.**

**This file or an individual page
shall not be considered a certified document.**

TIP PROJECT: U-5305

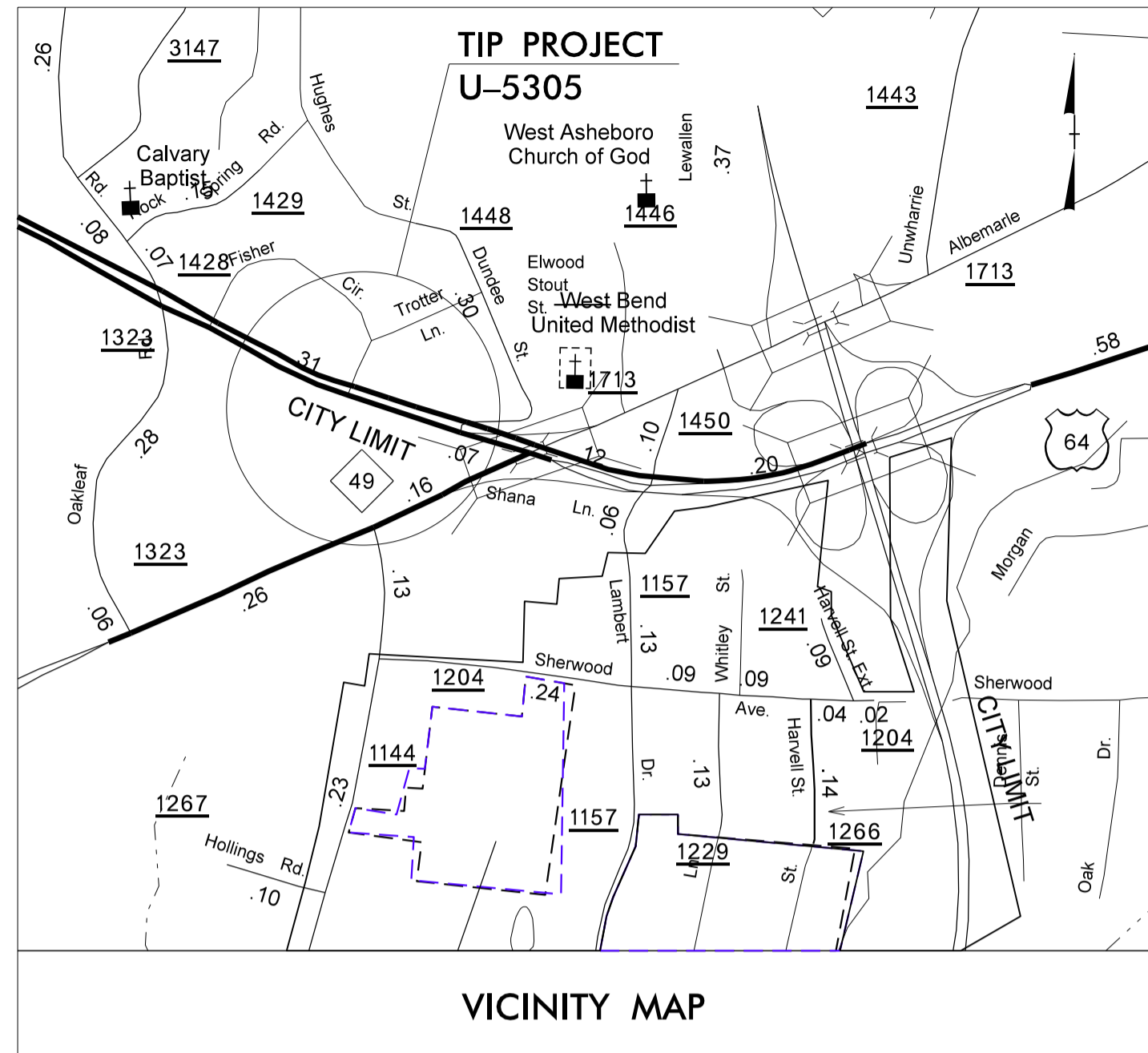
STATE OF NORTH CAROLINA
DIVISION OF HIGHWAYS

T.I.P. NO.	SHEET NO.
U-5305	UO-1

**UTILITIES BY OTHERS PLANS
RANDOLPH COUNTY**

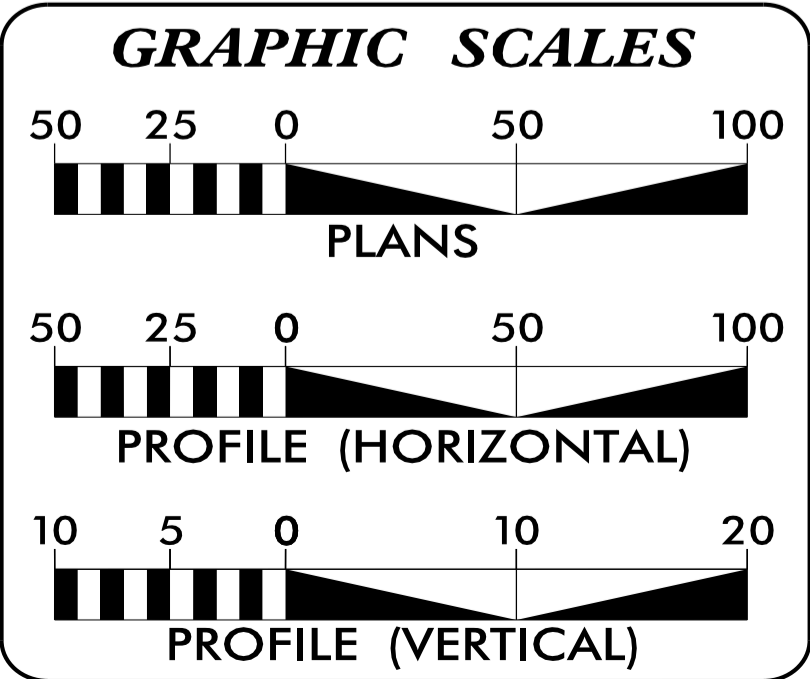
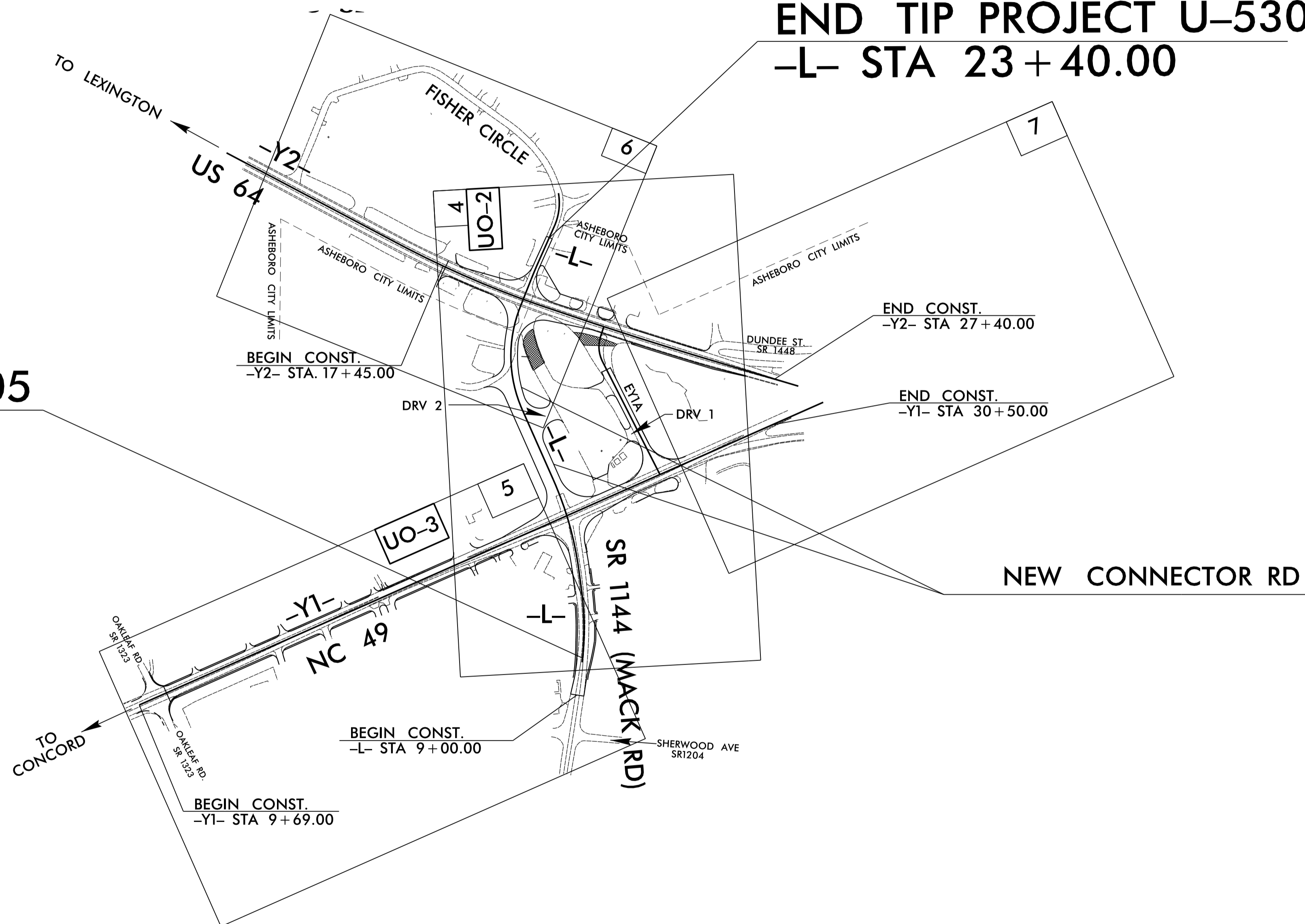
**LOCATION: ASHEBORO - NC 49 INTERSECTION WITH SR 1144 (MACK ROAD)
AND CONNECTOR ROAD REALIGNMENT WITH US 64 WEST**

TYPE OF WORK: UTILITY RELOCATION



**END TIP PROJECT U-5305
-L- STA 23 + 40.00**

**BEGIN TIP PROJECT U-5305
-L- STA 9 + 66.96**




INDEX OF SHEETS

SHEET NO.	DESCRIPTION
UO-1	TITLE SHEET
UO-2 THRU UO-3	UTILITY BY OTHERS PLAN SHEETS

UTILITY OWNERS ON PROJECT

(A) DUKE ENERGY - POWER (DISTRIBUTION)
 (B) CENTURYLINK - TELEPHONE
 (C) TIME WARNER CABLE - CABLE TELEVISION
 (D) PIEDMONT NATURAL GAS - GAS



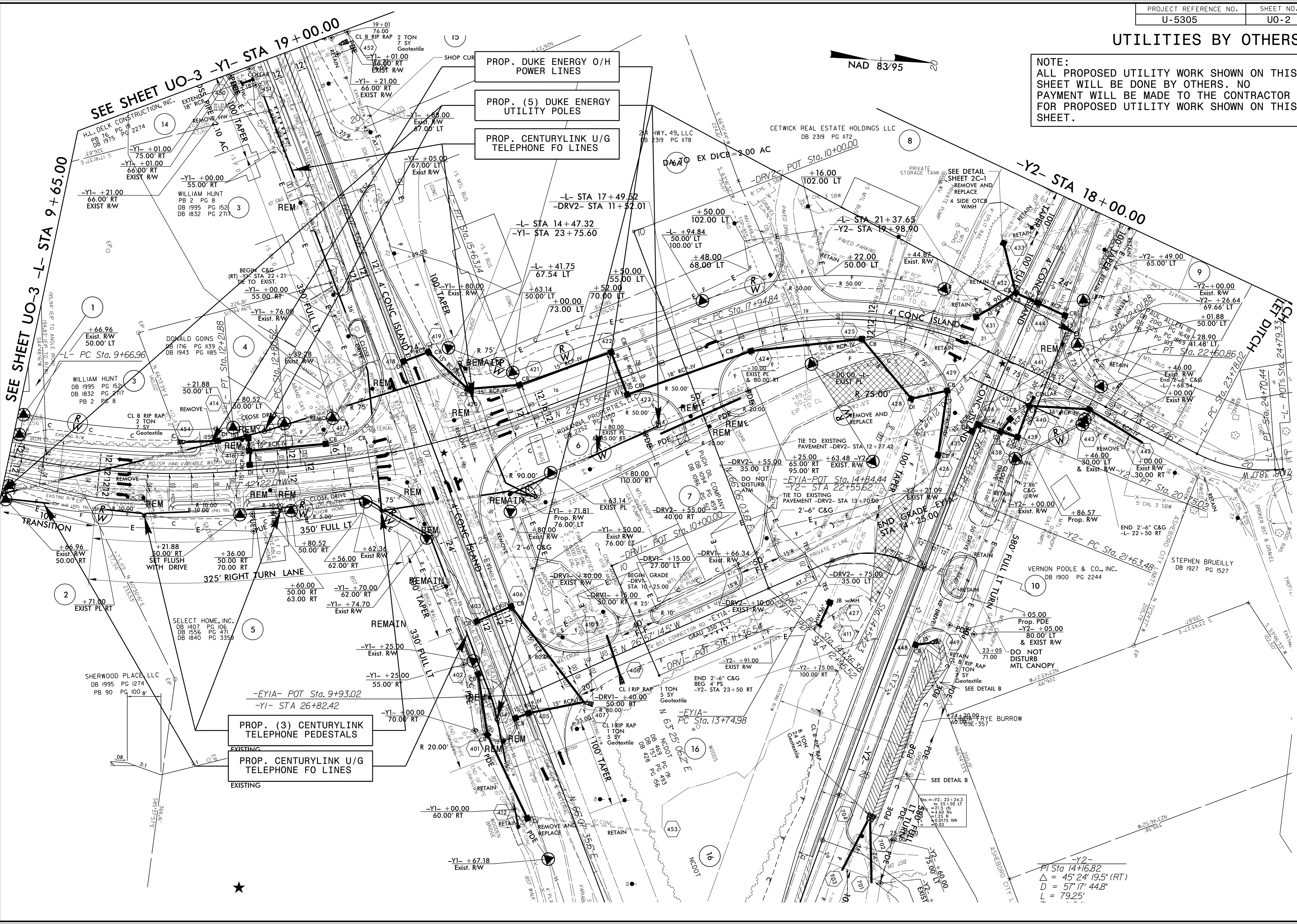
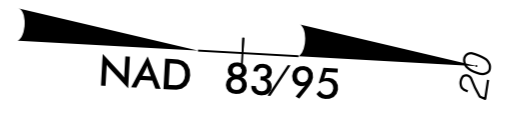
PREPARED IN THE OFFICE OF:
**DIVISION OF HIGHWAYS
 UTILITIES UNIT
 UTILITIES ENGINEERING**

1555 MAIL SERVICES CENTER
 RALEIGH, NC 27699-1555
 PHONE (919) 707-6690
 FAX (919) 250-4151

Roger Worthington, P.E. UTILITIES SECTION ENGINEER
Steve McKee, P.E. UTILITIES SQUAD LEADER PROJECT ENGINEER
Don Proper UTILITIES PROJECT DESIGN ENGINEER

UTILITIES BY OTHERS

NOTE:
ALL PROPOSED UTILITY WORK SHOWN ON THIS SHEET WILL BE DONE BY OTHERS. NO PAYMENT WILL BE MADE TO THE CONTRACTOR FOR PROPOSED UTILITY WORK SHOWN ON THIS SHEET.



PROP. DUKE ENERGY O/H POWER LINES

PROP. (5) DUKE ENERGY UTILITY POLES

PROP. CENTURYLINK U/G TELEPHONE FO LINES

PROP. (3) CENTURYLINK TELEPHONE PEDESTALS

EXISTING PROP. CENTURYLINK U/G TELEPHONE FO LINES

SEE SHEET UO-3 -Y1- STA 19+00.00

SEE SHEET UO-3 -L- STA 9+65.00

-Y2- STA 18+00.00

325' RIGHT TURN LANE

330' FULL LT

350' FULL LT

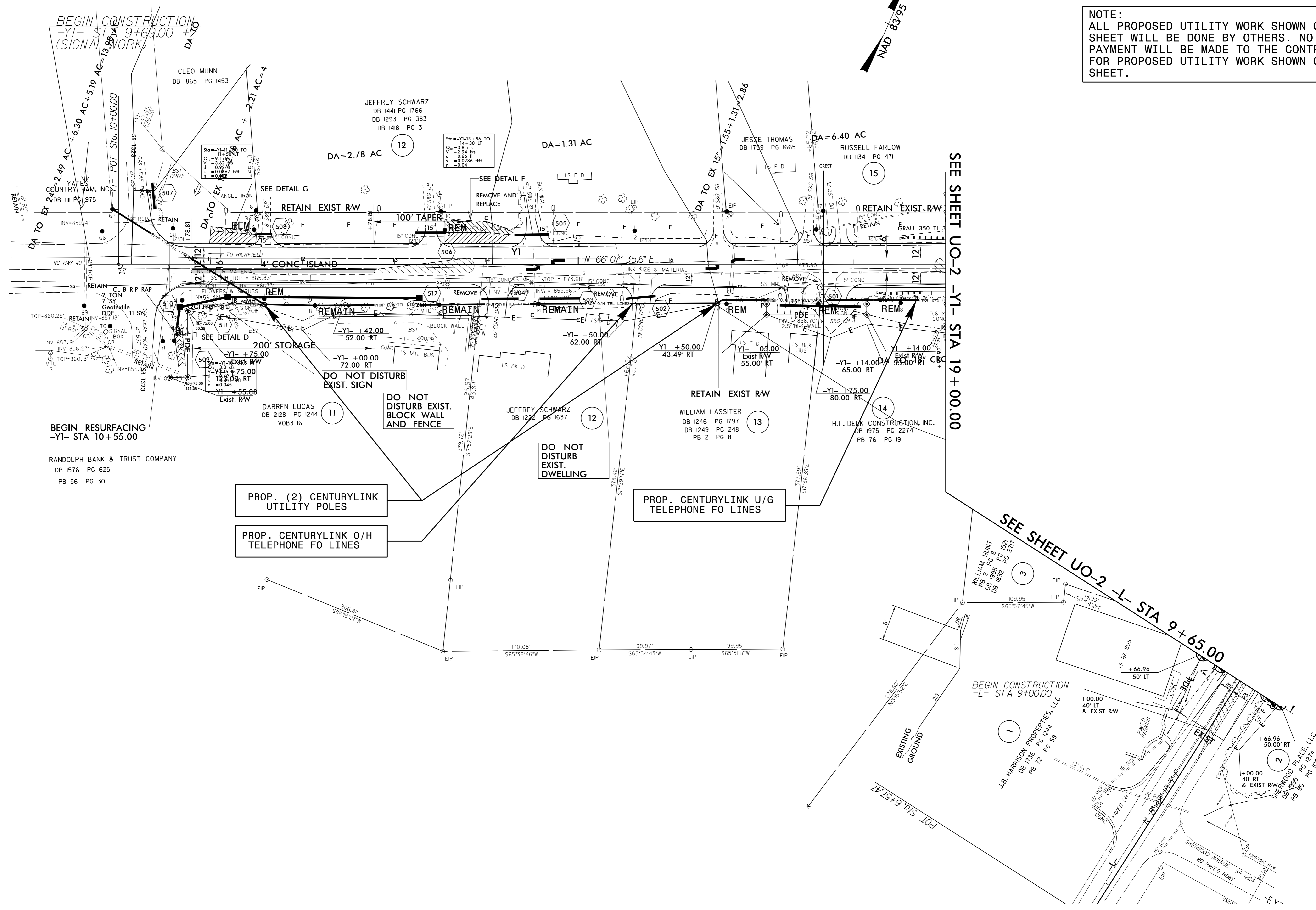
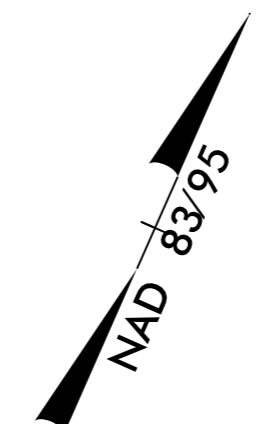
-Y2-
PI Sta 14+16.82
Δ = 45' 24" 19.5" (RT)
D = 57' 17" 44.8"
L = 79.25'

26-MAR-2015 09:33:33 80AP-Proj-U05305-UTL-PSH-U02.dgn

UTILITIES BY OTHERS

NOTE:
 ALL PROPOSED UTILITY WORK SHOWN ON THIS SHEET WILL BE DONE BY OTHERS. NO PAYMENT WILL BE MADE TO THE CONTRACTOR FOR PROPOSED UTILITY WORK SHOWN ON THIS SHEET.

5/14/99



SEE SHEET UO-2 -YI- STA 19+00.00

SEE SHEET UO-2 -L- STA 9+65.00

BEGIN CONSTRUCTION
 -YI- STA 9+69.00
 (SIGNAL WORK)

BEGIN RESURFACING
 -YI- STA 10+55.00

PROP. (2) CENTURYLINK
 UTILITY POLES

PROP. CENTURYLINK O/H
 TELEPHONE FO LINES

PROP. CENTURYLINK U/G
 TELEPHONE FO LINES

DO NOT DISTURB
 EXIST. DWELLING

DO NOT DISTURB
 EXIST. SIGN

DO NOT DISTURB
 BLOCK WALL
 AND FENCE

26-MAR-2015 09:35
 J:\11111111\U5305\UTL_PSH_UO3.dgn